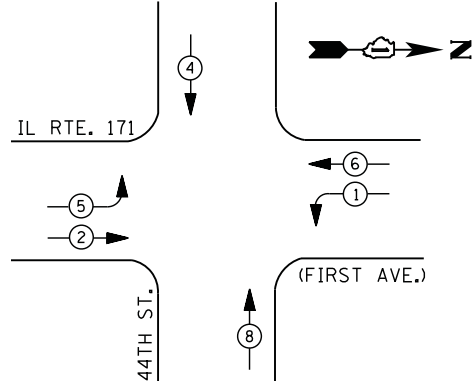


**SCHEDULE OF QUANTITIES**

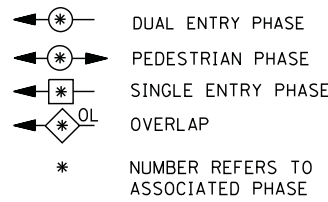
QUANTITY	UNIT	ITEM
15	SO FT	SIGN PANEL - TYPE 1
22.5	SO FT	SIGN PANEL - TYPE 2
34	FOOT	THERMOPLASTIC PAVEMENT MARKING - LINE 24"
68	SO FT	PAVEMENT MARKING REMOVAL
1	EACH	SERVICE INSTALLATION - POLE MOUNTED
620	FOOT	UNDERGROUND CONDUIT, GALVANIZED STEEL, 2" DIA.
45	FOOT	UNDERGROUND CONDUIT, GALVANIZED STEEL, 2 1/2" DIA.
53	FOOT	UNDERGROUND CONDUIT, GALVANIZED STEEL, 3" DIA.
297	FOOT	UNDERGROUND CONDUIT, GALVANIZED STEEL, 4" DIA.
5	EACH	HANDHOLE
2	EACH	HEAVY-DUTY HANDHOLE
1	EACH	DOUBLE HANDHOLE
1	EACH	TRANSCEIVER - FIBER OPTIC
* 512	FOOT	ELECTRIC CABLE IN CONDUIT, SIGNAL NO. 14 3C
2020	FOOT	ELECTRIC CABLE IN CONDUIT, SIGNAL NO. 14 5C
681	FOOT	ELECTRIC CABLE IN CONDUIT, SIGNAL NO. 14 7C
1535	FOOT	ELECTRIC CABLE IN CONDUIT, LEAD-IN, NO. 14 1 PAIR
32	FOOT	ELECTRIC CABLE IN CONDUIT, SERVICE, NO. 6 2 C
500	FOOT	ELECTRIC CABLE IN CONDUIT, EQUIPMENT GROUNDING CONDUCTOR, NO. 6 1C
2	EACH	TRAFFIC SIGNAL POST, GALVANIZED STEEL 14 FT.
1	EACH	TRAFFIC SIGNAL POST, GALVANIZED STEEL 16 FT.
2	EACH	STEEL MAST ARM ASSEMBLY AND POLE, 30 FT.
1	EACH	STEEL MAST ARM ASSEMBLY AND POLE, 34 FT.
1	EACH	STEEL MAST ARM ASSEMBLY AND POLE, 40 FT.
12	FOOT	CONCRETE FOUNDATION, TYPE A
4	FOOT	CONCRETE FOUNDATION, TYPE C
40.5	FOOT	CONCRETE FOUNDATION, TYPE E 30-INCH DIAMETER
13	FOOT	CONCRETE FOUNDATION, TYPE E 36-INCH DIAMETER
8	EACH	SIGNAL HEAD, LED, 1-FACE, 3-SECTION, MAST-ARM MOUNTED
2	EACH	SIGNAL HEAD, LED, 1-FACE, 5-SECTION, BRACKET MOUNTED
2	EACH	SIGNAL HEAD, LED, 1-FACE, 5-SECTION, MAST-ARM MOUNTED
2	EACH	SIGNAL HEAD, LED, 2-FACE, 3-SECTION, BRACKET MOUNTED
10	EACH	TRAFFIC SIGNAL BACKPLATE, LOUVERED, ALUMINUM
7	EACH	INDUCTIVE LOOP DETECTOR
541	FOOT	DETECTOR LOOP, TYPE I
* 3	EACH	LIGHT DETECTOR
* 1	EACH	LIGHT DETECTOR AMPLIFIER
1	EACH	TEMPORARY TRAFFIC SIGNAL INSTALLATION
1	EACH	REMOVE EXISTING TRAFFIC SIGNAL EQUIPMENT
8	EACH	REMOVE EXISTING HANDHOLE
1	EACH	REMOVE EXISTING DOUBLE HANDHOLE
8	EACH	REMOVE EXISTING CONCRETE FOUNDATION
1	EACH	TEMPORARY TRAFFIC SIGNAL TIMING
* 512	FOOT	EMERGENCY VEHICLE PRIORITY SYSTEM LINE SENSOR CABLE, NO. 20 3/C
1	EACH	FULL-ACTUATED CONTROLLER AND TYPE IV CABINET, SPECIAL
1	EACH	UNINTERRUPTIBLE POWER SUPPLY, SPECIAL

\* 100% VILLAGE OF LYONS COST

**CONTROLLER SEQUENCE**



**LEGEND**



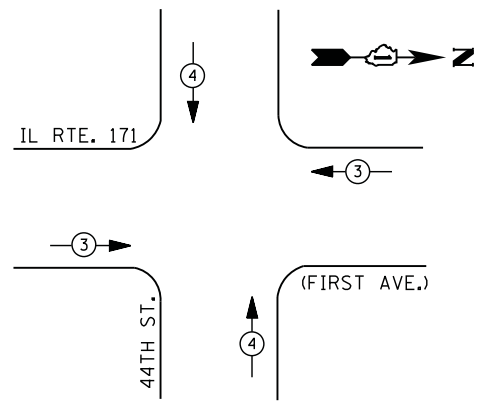
**PHASE DESIGNATION DIAGRAM**

I. D. O. T. TRAFFIC SIGNAL INSTALLATION ELECTRICAL SERVICE REQUIREMENTS					
TYPE	NO. LAMPS	WATTAGE		% OPERATIONS	TOTAL WATTAGE
		INCAND.	LED		
SIGNAL (RED)	16	135	17	0.50	136
(YELLOW)	16	135	25	0.25	100
(GREEN)	16	135	15	0.25	60
ARROW	8	135	12	0.10	10
PED. SIGNAL	--	90	25	1.00	--
CONTROLLER	1	100	100	1.00	100
ILLUM. SIGN		100	90	1.00	
406					406

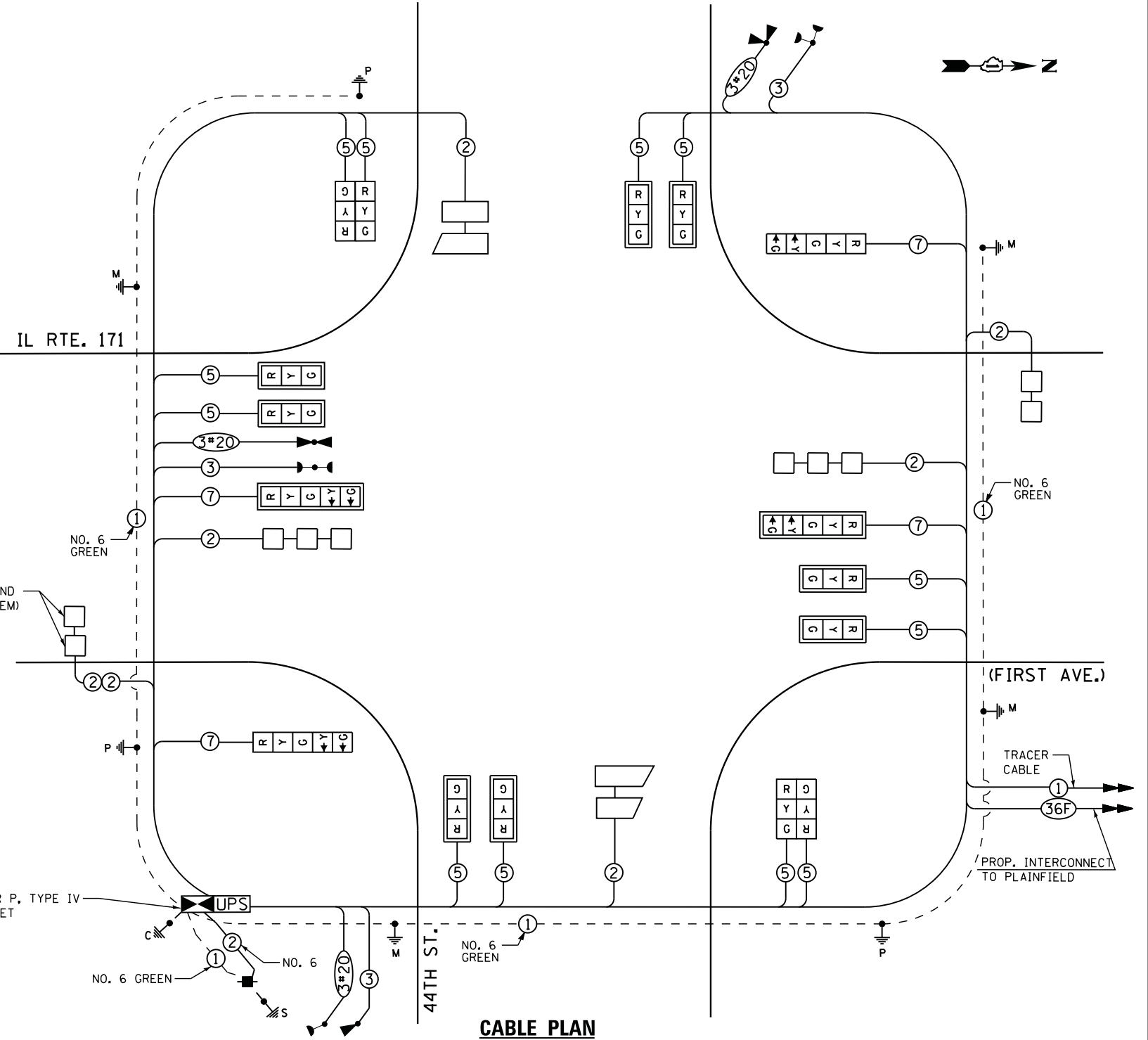
ENERGY COSTS- BILLED TO: IDOT - DISTRICT 1  
201 W. CENTER CT.  
SCHAUMBURG, IL 60196

ENERGY SUPPLY - CONTACT JOE STACHO  
PHONE 630-424-5704  
COMED

**EMERGENCY VEHICLE PREEMPTION SEQUENCE**



EMERGENCY VEHICLE PREEMPTORS		
EMERGENCY VEHICLE PREEMPTOR	3	4
MOVEMENT	← →	↑ ↓



**CABLE PLAN**

THE TRAFFIC SIGNAL CONTROL EQUIPMENT FOR THIS PROJECT SHALL BE "EAGLE" TO MATCH THE EXISTING ADJACENT SYSTEM.

**RESTORATION OF WORK AREA.** RESTORATION OF THE TRAFFIC SIGNAL WORK AREA SHALL BE INCLUDED IN THE RELATED PAY ITEM SUCH AS FOUNDATION, CONDUIT, HANDHOLE, TRENCH AND BACKFILL, ETC., AND NO EXTRA COMPENSATION SHALL BE ALLOWED. ALL ROADWAY SURFACES SUCH AS SHOULDERS, MEDIAN, SIDEWALKS, PAVEMENT ETC. SHALL BE REPLACED IN KIND. ALL DAMAGE TO MOWED LAWNS SHALL BE REPLACED WITH AN APPROVED SOD, AND ALL DAMAGE TO UNMOWED FIELDS SHALL BE SEEDED IN ACCORDANCE WITH STANDARD SPECIFICATIONS 252 AND 250 RESPECTIVELY.