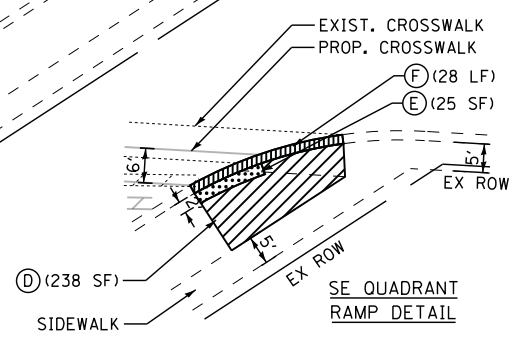
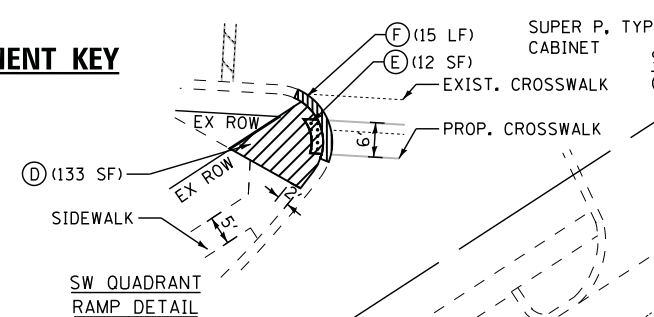


PAVEMENT MARKING AND RAMP REPLACEMENT KEY

- (A) REMOVE AND RESTRIPE EXISTING CROSSWALK. THERMOPLASTIC PAVEMENT MARKING - LINE 6" (WHITE)
- (B) REMOVE AND RESTRIPE EXISTING CROSSWALK. THERMOPLASTIC PAVEMENT MARKING - LINE 12" (WHITE)
- (C) REMOVE AND RESTRIPE EXISTING STOP BAR. THERMOPLASTIC PAVEMENT MARKING - LINE 24" (WHITE)
- (D) REMOVE EXISTING SIDEWALK AND REPLACE WITH NEW PORTLAND CEMENT CONCRETE SIDEWALK, 5'
- (E) DETECTABLE WARNINGS
- (F) REMOVE EXISTING B-6.24 CURB & GUTTER AND REPLACE WITH NEW STANDARD AND/OR DEPRESSED B-6.24 CURB AND GUTTER

SIDEWALK RAMP REPLACEMENT AREAS ARE APPROXIMATE. REMOVAL AND REPLACEMENT OF ANY SIDEWALK AND/OR CURB SHALL BE FIELD VERIFIED BY THE CONTRACTOR AND APPROVED BY THE ENGINEER, AND SHALL MEET THE REQUIREMENTS OF ADAAG.

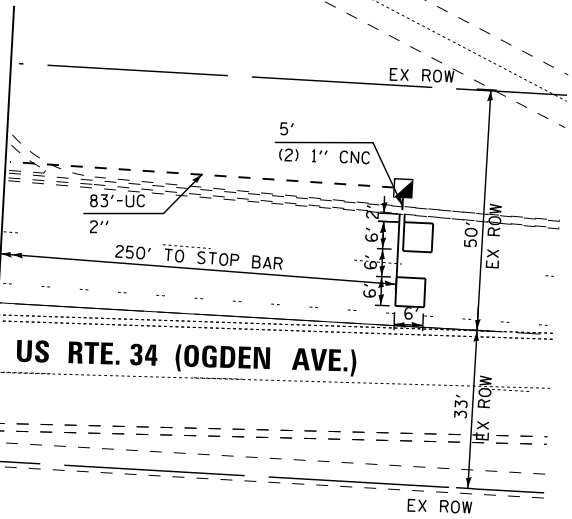


GENERAL NOTES

1. IT SHALL BE THE CONTRACTOR'S RESPONSIBILITY TO VERIFY ALL DIMENSIONS AND CONDITIONS EXISTING IN THE FIELD PRIOR TO ORDERING MATERIALS AND BEGINNING CONSTRUCTION. THIS SHALL INCLUDE LOCATING THE MAST ARM FOUNDATIONS AND VERIFYING THE MAST ARM LENGTHS.
2. THE EXACT LOCATION OF ALL UTILITES SHALL BE FIELD VERIFIED BY THE CONTRACTOR BEFORE ORDERING ANY MATERIALS AND STARTING ANY WORK. FOR LOCATIONS OF UTILITIES, LOCALLY OWNED EQUIPMENT, LEASED ENFORCEMENT CAMERA SYSTEM FACILITIES AND IDOT UNDERGROUND FACILITIES, CONTACT THE LOCAL COUNTIES, MUNICIPALITIES AND IDOT FOR LOCATES. THE CONTRACTOR SHALL CALL "JULIE" AT (800) 892-0123 OR 811. IN THE CITY OF CHICAGO CONTACT DIGGER AT (312) 744-7000 FOR FIELD LOCATIONS OF BURIED UTILITIES (48 HOURS NOTIFICATION REQUIRED).
3. THE CONTRACTOR SHALL CHECK THE PROPOSED TRAFFIC SIGNAL EQUIPMENT LOCATIONS FOR OVERHEAD UTILITY CONFLICTS. THE CONTRACTOR SHALL COORDINATE ANY CONFLICTS WITH THE UTILITY COMPANIES AND THE RESIDENT ENGINEER BEFORE ORDERING MATERIALS.
4. THE CONTRACTOR SHALL COORDINATE CONSTRUCTION ACTIVITIES WITH UTILITY COMPANIES, LOCAL GOVERNMENT AGENCIES AND IDOT.

THE TRAFFIC SIGNAL CONTROL EQUIPMENT FOR THIS PROJECT SHALL BE "EAGLE" TO MATCH THE EXISTING ADJACENT SYSTEM.

MATCHLINE US RTE. 34 STA. 608 + 00



RESTORATION OF WORK AREA. RESTORATION OF THE TRAFFIC SIGNAL WORK AREA SHALL BE INCLUDED IN THE RELATED PAY ITEM SUCH AS FOUNDATION, CONDUIT, HANDHOLE, TRENCH AND BACKFILL, ETC., AND NO EXTRA COMPENSATION SHALL BE ALLOWED. ALL ROADWAY SURFACES SUCH AS SHOULDERS, MEDIAN, SIDEWALKS, PAVEMENT ETC. SHALL BE REPLACED IN KIND. ALL DAMAGE TO MOWED LAWNS SHALL BE REPLACED WITH AN APPROVED SOD, AND ALL DAMAGE TO UNMOWED FIELDS SHALL BE SEEDING IN ACCORDANCE WITH STANDARD SPECIFICATIONS 252 AND 250 RESPECTIVELY.

FILE NAME =	USER NAME = *USER*	DESIGNED - DW	REVISED -
N:\Projects\312055\DesignCAD\Sheet Files\60V34rwa34proPLAINFIELD.dgn		DRAWN - LV	REVISED -
	PLOT SCALE = *SCALE*	CHECKED - KM	REVISED -
	PLOT DATE = 10/11/2013	DATE - 9/25/2012	REVISED -

STATE OF ILLINOIS
 DEPARTMENT OF TRANSPORTATION

TRAFFIC SIGNAL MODERNIZATION PLAN
 US ROUTE 34 (OGDEN AVENUE) AT PLAINFIELD ROAD

SCALE: SHEET NO. OF SHEETS STA. TO STA.

F.A.P. RTE.	SECTION	COUNTY	TOTAL SHEETS	SHEET NO.
372	2012-047I	COOK	63	40
CONTRACT NO. 60V34				
ILLINOIS FED. AID PROJECT				