

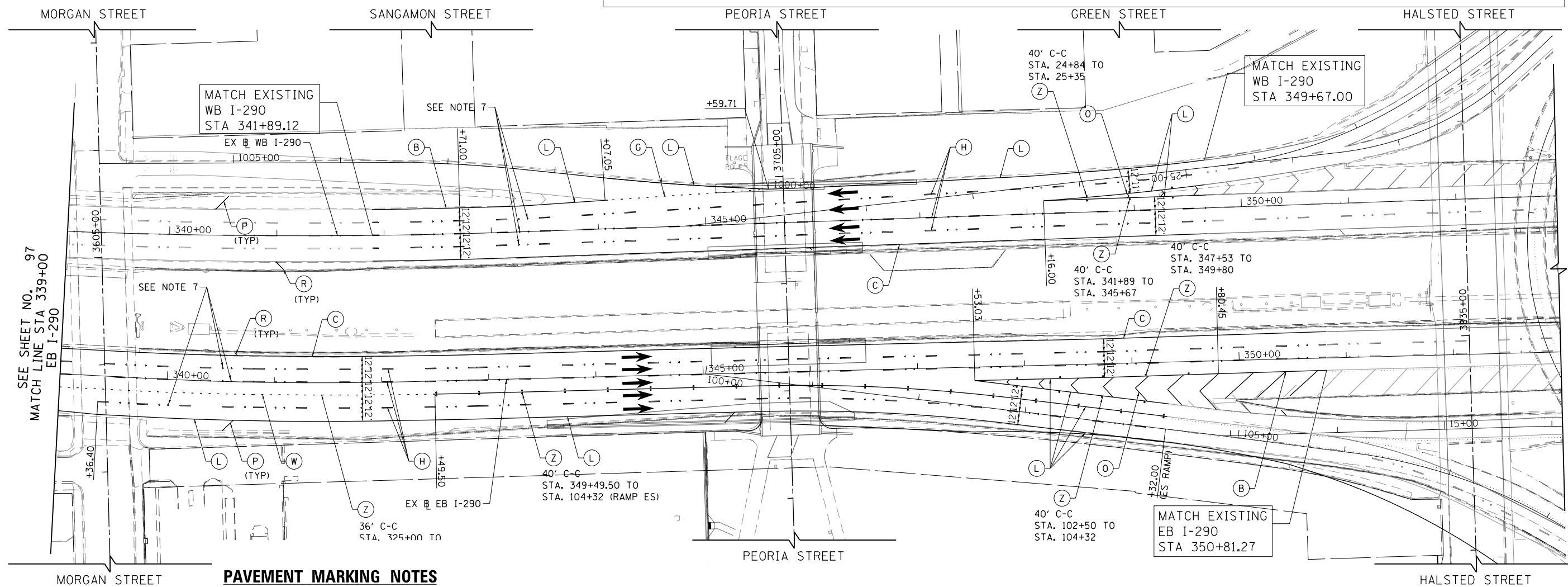
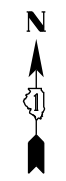
LEGEND

PAVEMENT MARKING MATERIAL

- EPOXY PAVEMENT MARKING
- ◇ TEMPORARY PAVEMENT MARKING
- THERMOPLASTIC PAVEMENT MARKING
- △ POLYUREA PAVEMENT MARKING TYPE I

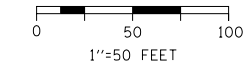
- PAVEMENT MARKING TYPE**
- A - LETTERS AND SYMBOLS (WHITE)
 - B - 4" WHITE EDGE LINE
 - C - 4" YELLOW EDGE LINE
 - D - 4" DOUBLE YELLOW CENTERLINE
 - E - 4" WHITE (6' DASH, 18' SKIP)
 - F - 4" YELLOW (6' DASH, 18' SKIP)
 - G - 4" WHITE (2' DASH, 6' SKIP)
 - H - 5" WHITE (10' DASH, 30' SKIP)
 - I - 6" WHITE SOLID LINE
 - J - 6" WHITE (2' DASH, 6' SKIP)
 - K - 6" WHITE 45° DIAGONALS SPACED @ 20' CENTERS
 - L - 8" WHITE EDGE LINE

- M - 12" WHITE (2' DASH, 2' SKIP)
- N - 12" WHITE 45° DIAGONALS SPACED @ 20' CENTERS
- O - 12" WHITE 45° DIAGONALS SPACED @ 30' CENTERS
- P - 12" WHITE 45° DIAGONALS SPACED @ 500' CENTERS
- Q - 12" YELLOW 45° DIAGONALS SPACED @ 50' CENTERS
- R - 12" YELLOW 45° DIAGONALS SPACED @ 500' CENTERS
- S - 12" WHITE CHEVRONS SPACED @ 30' CENTERS
- T - 24" WHITE STOP BAR
- U - 24" WHITE CROSSWALK, 6' WIDTH, SPACED @ 4' CENTERS
- W - 8" WHITE (3' DASH, 9' SKIP)
- Y - RAISED REFLECTIVE PAVEMENT MARKER (1-WAY YELLOW / OPAQUE)
- Z - RAISED REFLECTIVE PAVEMENT MARKER (1-WAY CRYSTAL / OPAQUE)



PAVEMENT MARKING NOTES

1. ALL FINAL PAVEMENT MARKING MATERIALS PLACED ON PCC PAVEMENT SHALL BE POLYUREA TYPE I EXCEPT WHERE NOTED IN THE PLANS.
2. ALL FINAL PAVEMENT MARKING MATERIALS PLACED ON BITUMINOUS PAVEMENT SHALL BE THERMOPLASTIC EXCEPT WHERE NOTED IN THE PLANS.
3. ALL FINAL PAVEMENT MARKING SYMBOLS SHALL BE OF SMALL SIZE.
4. ALL DAMAGE TO EXISTING PAVEMENT MARKINGS OR RAISED REFLECTIVE PAVEMENT MARKERS OUTSIDE OF THE IMPROVEMENT LIMITS SHOWN ON THE PLANS SHALL BE REPLACED AT THE CONTRACTOR'S EXPENSE.
5. BEFORE BEGINNING ANY WORK, THE CONTRACTOR SHALL RECORD AND RETAIN ALL EXISTING PAVEMENT MARKINGS AND MARKERS FOR FUTURE REFERENCE. EXACT LOCATIONS OF ALL PAVEMENT MARKINGS SHALL BE DIRECTED BY THE ENGINEER.
6. THE RESIDENT ENGINEER SHALL CONTACT JERNARD PERKINS, AREA TRAFFIC FIELD ENGINEER AT 708-524-2145 A MINIMUM OF 2 WEEKS PRIOR TO PLACEMENT OF PERMANENT PAVEMENT MARKINGS.
7. PROPOSED MARKINGS SHALL BE LAID OUT IN ORDER TO UTILIZE EXISTING RAISED REFLECTIVE MARKERS LOCATIONS. PROPOSED RAISED REFLECTIVE MARKER LOCATIONS ARE CALLED OUT IN THE PLANS ACCORDINGLY.
8. ALL DAMAGED OR BROKEN RAISED REFLECTIVE MARKER REFLECTORS SHALL BE REPLACED AT THE DIRECTION OF THE RESIDENT ENGINEER AND PAID FOR AS REPLACEMENT REFLECTOR.



FILE PATH = p:\388035\pmt\lsc\comon\lme\local\p\wec\000\Documents\01_Americas\Transportation\60269938_Circle\Phase_1\000_CAD\006_Roadway\Sheets\60W29_Sht-Pmk-ML-02.dgn



D:\60W29-Sht-Pmk-ML-02.dgn	DESIGNED - JDT	REVISED -
USER NAME = BAW\jort	DRAWN - JTR	REVISED -
PLOT SCALE = 100.0000' / in.	CHECKED - JLV	REVISED -
PLOT DATE = 10/28/2013	DATE - 10/30/2013	REVISED -

**STATE OF ILLINOIS
DEPARTMENT OF TRANSPORTATION**

PAVEMENT MARKING PLAN			
I-290			
SCALE: 1"=50'	SHEET 3	OF 3 SHEETS	STA. 339+00 TO STA. 353+00

F.A.I. RTE.	SECTION	COUNTY	TOTAL SHEETS	SHEET NO.
90/94/290	2013-011R	COOK	356	98
CONTRACT NO. 60W29				
ILLINOIS FED. AID PROJECT				