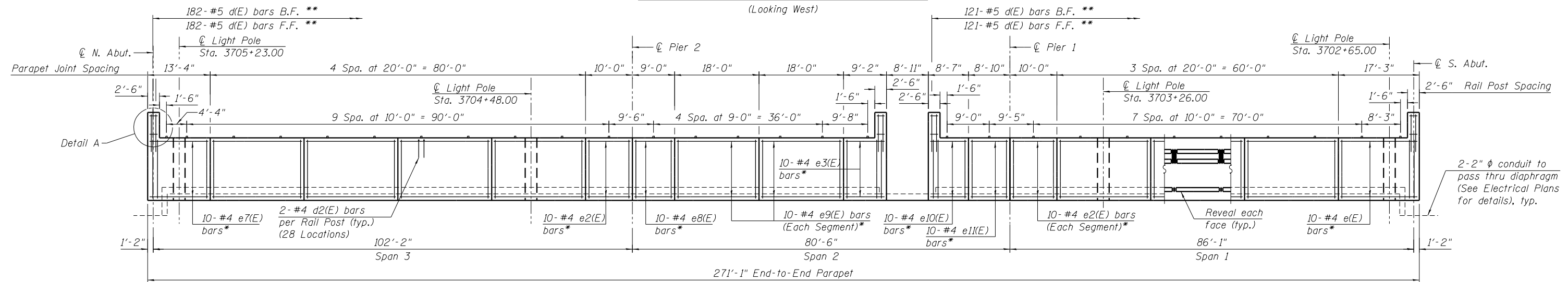


INSIDE ELEVATION OF WEST PARAPET

(Looking West)

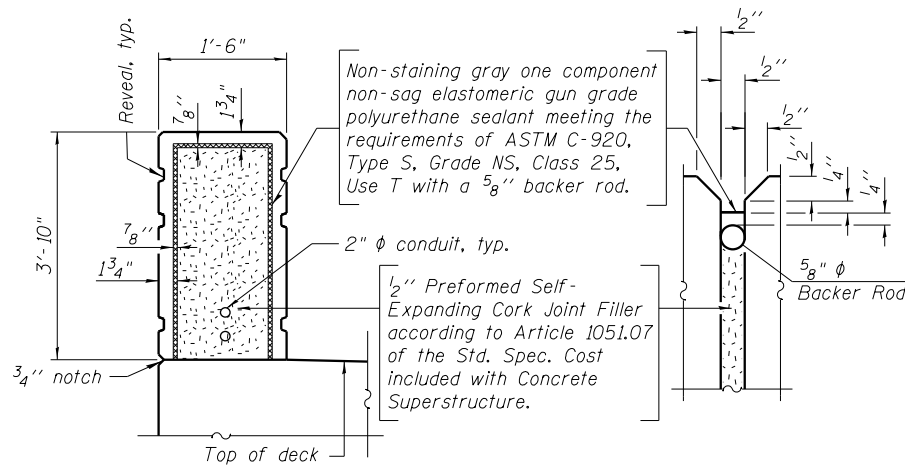


INSIDE ELEVATION OF EAST PARAPET

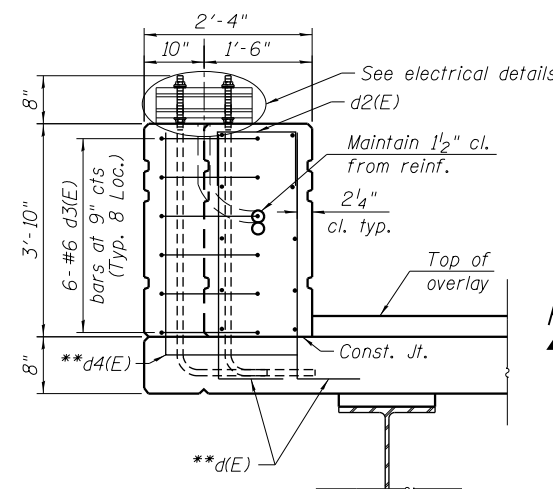
(Looking East)

- * See Section thru Parapet on Sheet 23 of 55.
- ** See Sheets 17 thru 20 of 55 for spacing of d(E) and d4(E) bars. Bars are included with Precast Deck Panels. See Sheet 20 of 55 for Bill of Material.

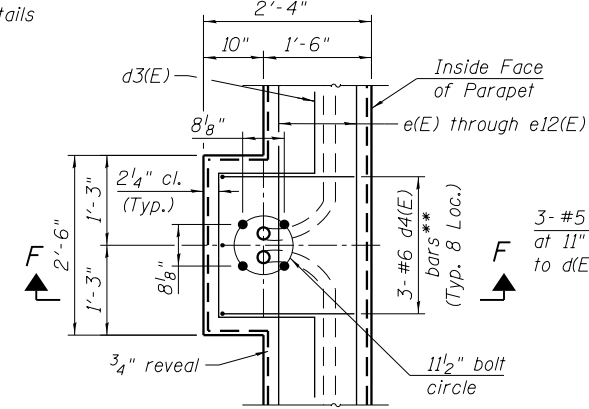
Notes:
 For notes, bar diagrams, section through parapet and Bill of Material, see Sheet 23 of 55.
 All edges shall be chamfered 3/4".
 For architectural details on the parapets and Decorative Railing (Parapet Mounted) details, see Sheet 26 of 55.
 For Bridge Fence Railing (Special) layout and post spacing, see Sheet 28 of 55.
 For Bridge Fence Railing (Special) details, see Sheet 29 of 55.
 The cost of reveal is included in cost of Concrete Superstructure.



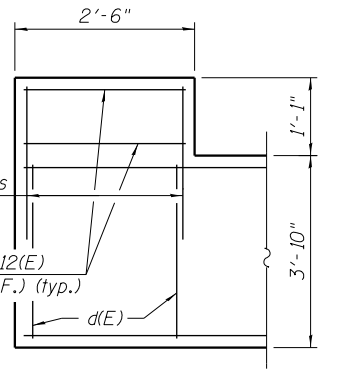
PARAPET JOINT DETAILS



SECTION F-F



PARAPET DETAIL AT LIGHTPOLE



DETAIL A

11:03:40 PM 01/16/17 08-60W29-5021-Parapet.dgn



USER NAME = BAWIort	DESIGNED = WJC	REVISED
CHECKED = DL	REVISED	
PLOT SCALE = 21:4,0000 ' / in.	DRAWN = SLW	REVISED
PLOT DATE = 10/28/2013	CHECKED = DL	REVISED

**STATE OF ILLINOIS
 DEPARTMENT OF TRANSPORTATION**

**PARAPET ELEVATIONS AND DETAILS
 STRUCTURE NO. 016-1708**

SHEET NO. 21 OF 55 SHEETS

MUN	SECTION	COUNTY	TOTAL SHEETS	SHEET NO.
2090	2013-011R	COOK	356	153
CONTRACT NO.			60W29	
ILLINOIS FED. AID PROJECT				