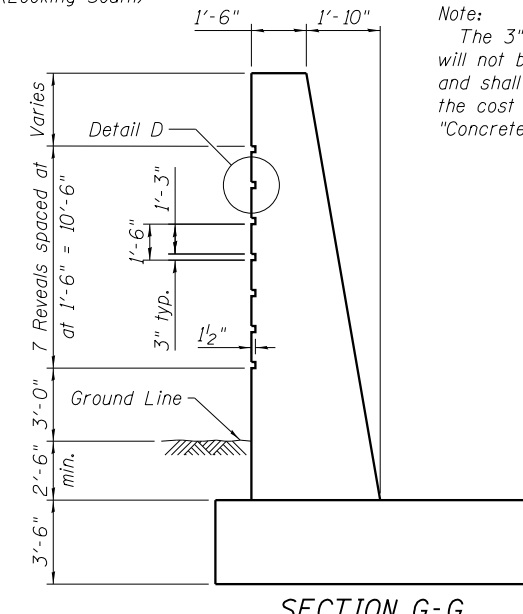
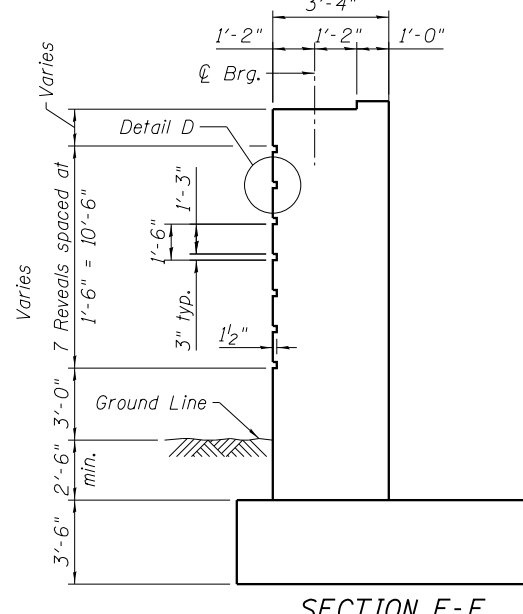
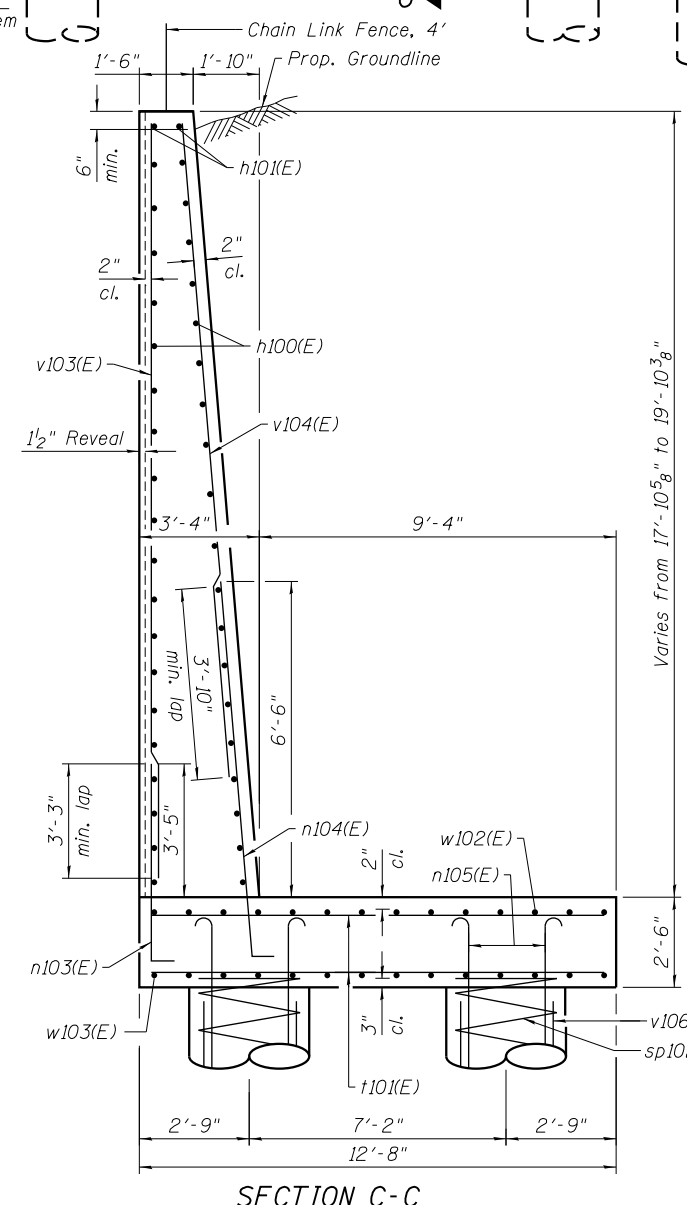
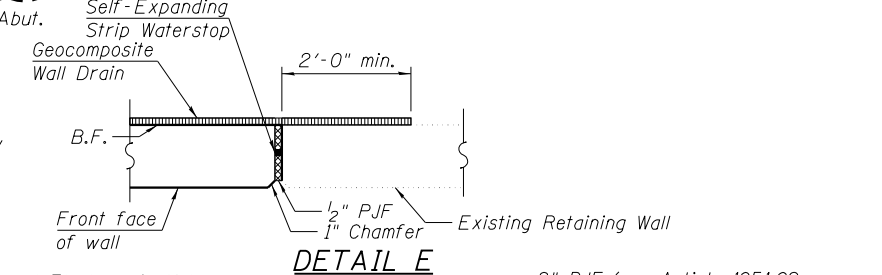


SOUTH ABUTMENT ELEVATION - ARCHITECTURAL DETAILS
(Looking South)

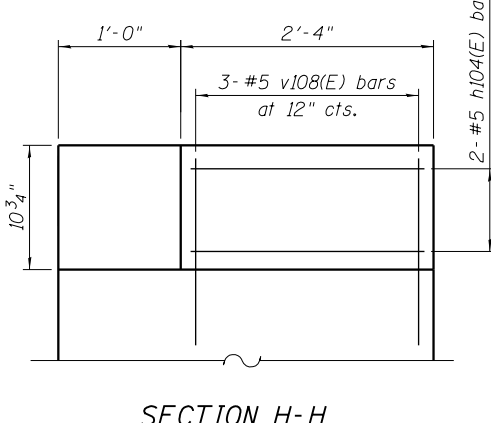
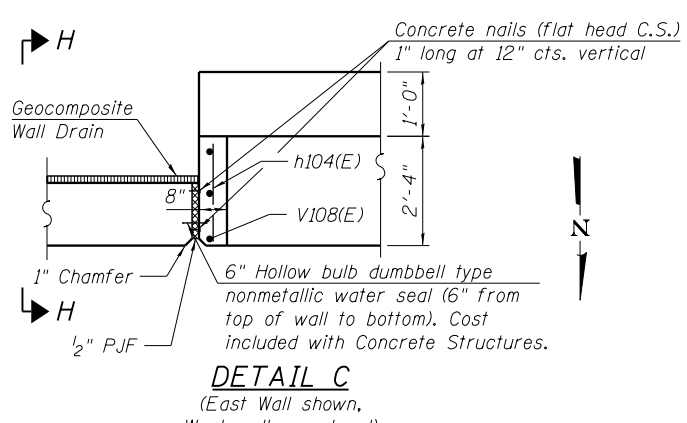
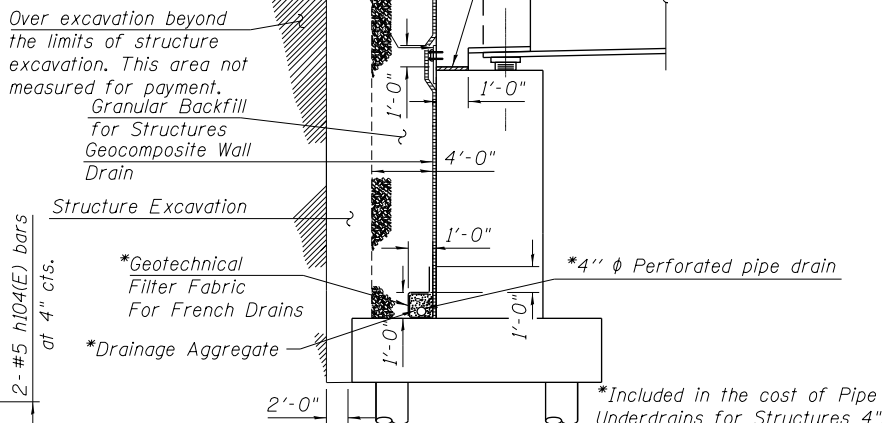


Note:
The 3" x 1 1/2" reveal will not be paid separately and shall be included in the cost of the pay item "Concrete Structures".



Fabric Reinforced Elastomeric Mat according to Section 1028 of the Std. Specs. Fabric mat shall be 24" wide and attached full width and vertically at edges to the abutment cap with a 3/8" x 5" steel plate and 1/2" φ studs with nuts and washers at 12" cts. See Fig. 3.8.4-2. Cost included with Concrete Superstructures.

2" P/JF (per Article 1051.09 of the Standard Specifications) full width and vertically at edges bonded to abutment cap with suitable adhesive as recommended by supplier. See Fig. 3.8.4-2.



BILL OF MATERIAL

All drainage system components shall extend to the West end of the Southwest wingwall and to the East end of the Southeast wingwall except an outlet pipe shall extend thru the Soil Retention System to the East. The pipe shall drain onto the roadway.

Item	Unit	Total
Pipe Underdrains for Structures 4"	Foot	114

11:04:39 PM 01/17/08 - C:\B27\0946\016156\016156.dgn



USER NAME = BAWIort	DESIGNED = JRM	REVISIONS
PLOT SCALE = 0x2.0000 '1" / in.	CHECKED = SAS	REVISIONS
PLOT DATE = 10/28/2013	DRAWN = RLS	REVISIONS
	CHECKED = MDS	REVISIONS

**STATE OF ILLINOIS
DEPARTMENT OF TRANSPORTATION**

**SOUTH ABUTMENT DETAILS 2
STRUCTURE NO. 016-1708**

SHEET NO. 40 OF 55 SHEETS

MUN	SECTION	COUNTY	TOTAL SHEETS	SHEET NO.
2090	2013-011R	COOK	356	172
CONTRACT NO.			60W29	
ILLINOIS FED. AID PROJECT				