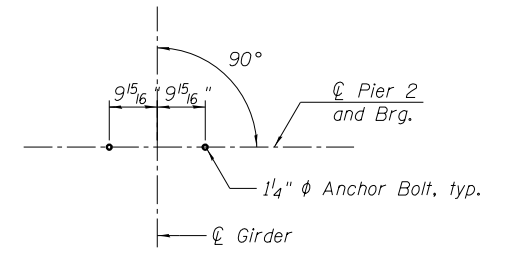
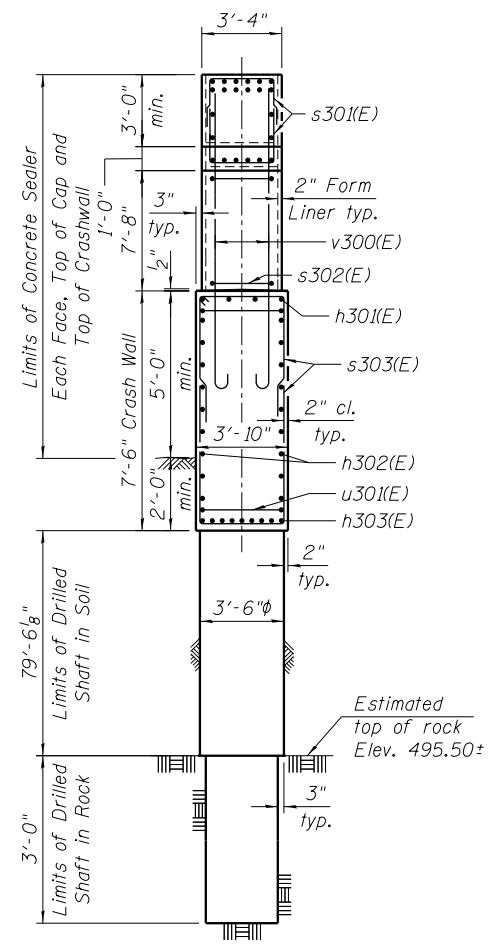


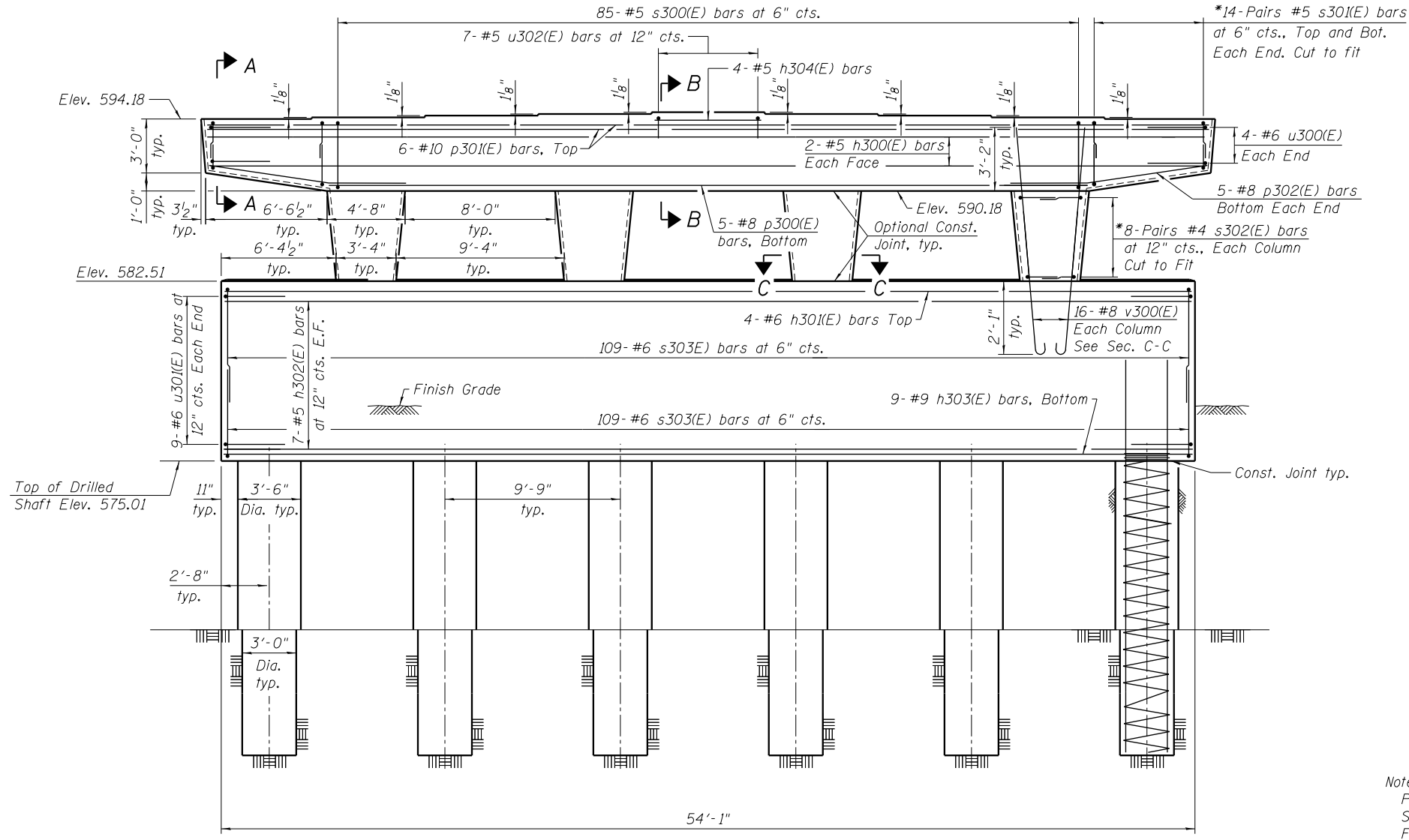
TOP PLAN



ANCHOR BOLT LAYOUT



END VIEW



ELEVATION  
(Looking North)

\* Cut vertical legs of bar to fit.

TOP OF SEAT ELEVATION

Girder No.	Seat Elevation
1	594.18
2	594.27
3	594.37
4	594.46
5	594.56
6	594.46
7	594.37
8	594.27
9	594.18

Notes:  
 Pour steps monolithically with cap.  
 Space reinforcement in cap to miss anchor bolts.  
 For Sections A-A, B-B and C-C, Drilled Shaft  
 Details and Bill of Material, see sheet 48 of 55.

11:04:56 PM 0161708-60W29-5047-Pier2\_P&E.dgn



USER NAME = BAWItoft	DESIGNED = JRM	REVISED
	CHECKED = MDS	REVISED
PLOT SCALE = 8x0.0009 ' / in.	DRAWN = MTS	REVISED
PLOT DATE = 10/28/2013	CHECKED = MDS	REVISED

STATE OF ILLINOIS  
 DEPARTMENT OF TRANSPORTATION

PIER 2 PLAN AND ELEVATION  
 STRUCTURE NO. 016-1708

SHEET NO. 47 OF 55 SHEETS

MUN	SECTION	COUNTY	TOTAL SHEETS	SHEET NO.
2090	2013-011R	COOK	356	179
CONTRACT NO.			60W29	
ILLINOIS FED. AID PROJECT				