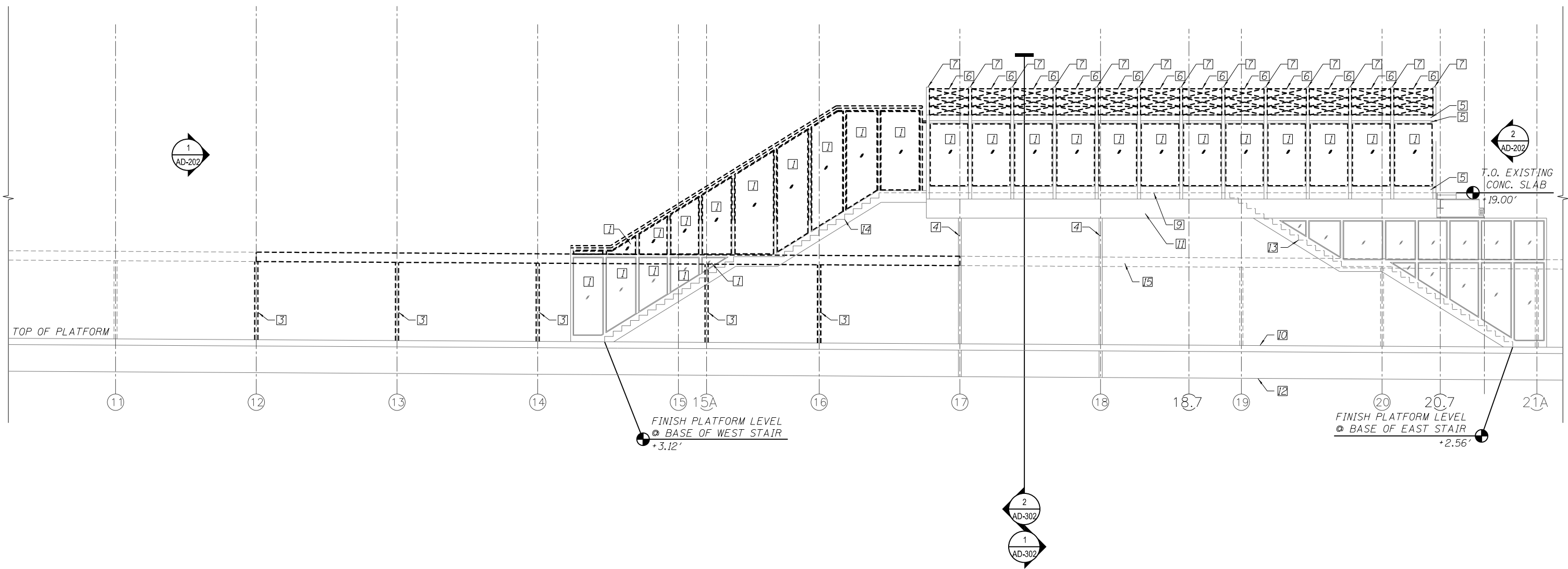


- KEY NOTES:
1. REMOVE GLAZING AND FRAMEGLAZING STOPS & SCREWS.
 2. NOT USED.
 3. REMOVE PLATFORM CANOPY COLUMN IN ITS ENTIRETY - SEE STRUCTURAL DRAWINGS.
 4. EXISTING STATION COLUMN TO REMAIN.
 5. EXISTING STRUCTURAL FRAMING TO REMAIN, TYP.
 6. REMOVE SKYLIGHT UNITS AND SCREWS IN THEIR ENTIRETY, TYP.
 7. EXISTING STEEL TUBE STRUCTURE TO REMAIN, TYP.
 8. NOT USED.
 9. FINISH FLOOR LEVEL.
 10. PLATFORM LEVEL.
 11. EXISTING STEEL BEAM TO REMAIN.
 12. FINISH GRADE.
 13. EXISTING PEORIA STREET STATION EAST STAIRS TO REMAIN REMOVE EXISTING PEORIA STREET STATION WEST STAIR IN ITS ENTIRETY.
 14. EXISTING PLATFORM CANOPY DASHED FOR CLARITY.



1 DEMOLITION STATION SOUTH ELEVATION
SCALE: 3/16" = 1'-0"

10/16/22 AM
0161708-60W29-AD-200.dgn



USER NAME = BAWitor†	DESIGNED - WHB	REVISED
	CHECKED - CRR	REVISED
PLOT SCALE = 10:8.0000 ' / in.	DRAWN - WHB	REVISED
PLOT DATE = 10/29/2013	CHECKED - CRR	REVISED

STATE OF ILLINOIS
DEPARTMENT OF TRANSPORTATION

PEORIA STREET STATION
DEMOLITION STATION ELEVATIONS

SHEET NO. AD-2000F 117 SHEETS

PRELIMINARY NOT FOR CONSTRUCTION

MUN	SECTION	COUNTY	TOTAL SHEETS	SHEET NO.
2090	2013-011R	COOK	356	220
CONTRACT NO. 60W29				
ILLINOIS FED. AID PROJECT		FED. AID PROJECT		