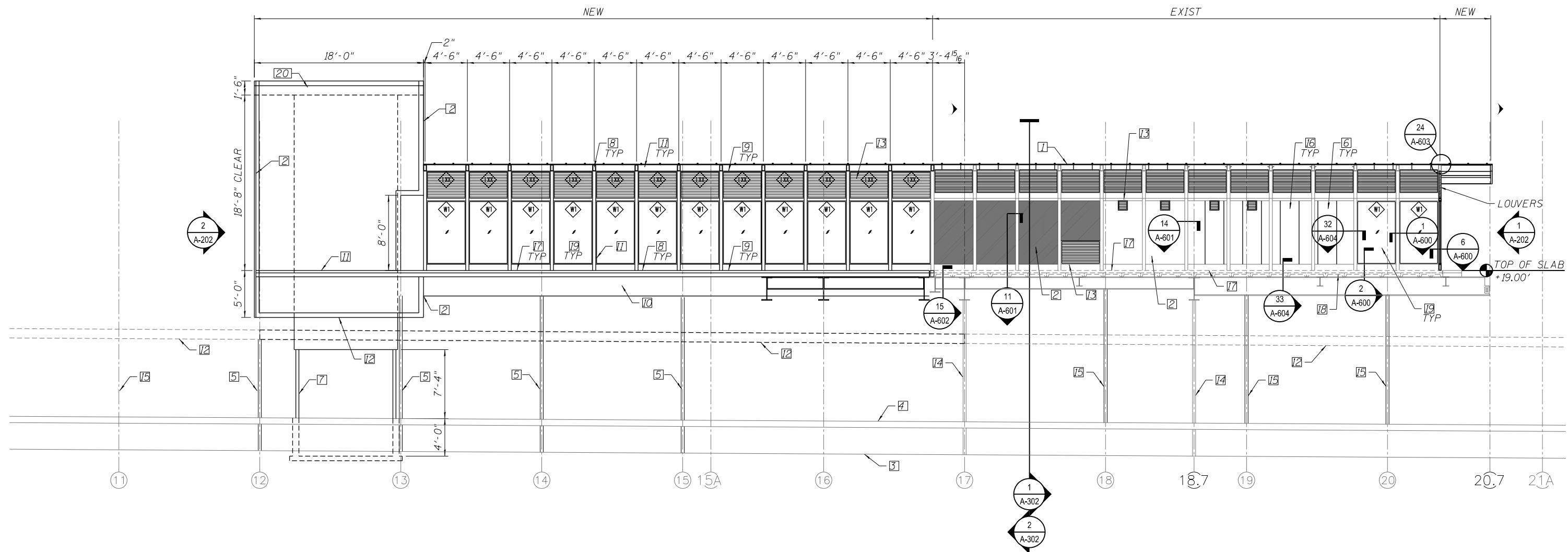


- KEY NOTES:
1. TRANSLUCENT PANEL ROOF SYSTEM
 2. INSULATED STAINLESS STEEL PANEL SYSTEM
 3. FINISH GRADE
 4. PLATFORM
 5. NEW CANOPY COLUMN
 6. TRANSLUCENT SYSTEM TO MATCH ROOF COLOR
 7. PAINTED STEEL HOISTWAY STRUCTURE -SEE STR DWGS
 8. NEW STEEL TUBE STRUCTURAL-SEE STR DWGS
 9. NEW STRUCTURAL FRAMING-SEE STR DWGS-SEE STR DWGS
 10. STRUCTURAL BEAM
 11. FINISH FLOOR LEVEL
 12. PLATFORM CANOPY AND CANOPY COLUMNS DASHED FOR CLARITY
 13. LOUVER
 14. EXIST STATION COLUMN TO REMAIN
 15. EXIST CANOPY COLUMN TO REMAIN
 16. LINEAR METAL CEILING SYSTEM
 17. NEW CONC SLAB
 18. EXIST PRECAST PLANK
 19. W1 NEW TEMPERED GLASS
 20. SINGLE PLY MEMBRANE ROOF



1 STATION SECTION LOOKING NORTH
 SCALE: 3/16" = 1'-0"
 *INTERIOR PARTITION AND EQUIPMENT NOT SHOWN FOR CLARITY

10/16/45 AM 0161708-60W29-A-301.dgn



USER NAME = BAWitorf	DESIGNED - WHB	REVISED
	CHECKED - CRR	REVISED
PLOT SCALE = 10:8.0012 ' / in.	DRAWN - WHB	REVISED
PLOT DATE = 10/29/2013	CHECKED - CRR	REVISED

STATE OF ILLINOIS
 DEPARTMENT OF TRANSPORTATION

PEORIA STREET STATION
 STATION SECTION

SHEET NO. A-301 OF 117 SHEETS

PRELIMINARY NOT FOR CONSTRUCTION

MUN	SECTION	COUNTY	TOTAL SHEETS	SHEET NO.
2090	2013-011R	COOK	356	238
CONTRACT NO. 60W29				
ILLINOIS FED. AID PROJECT		FED. AID PROJECT		