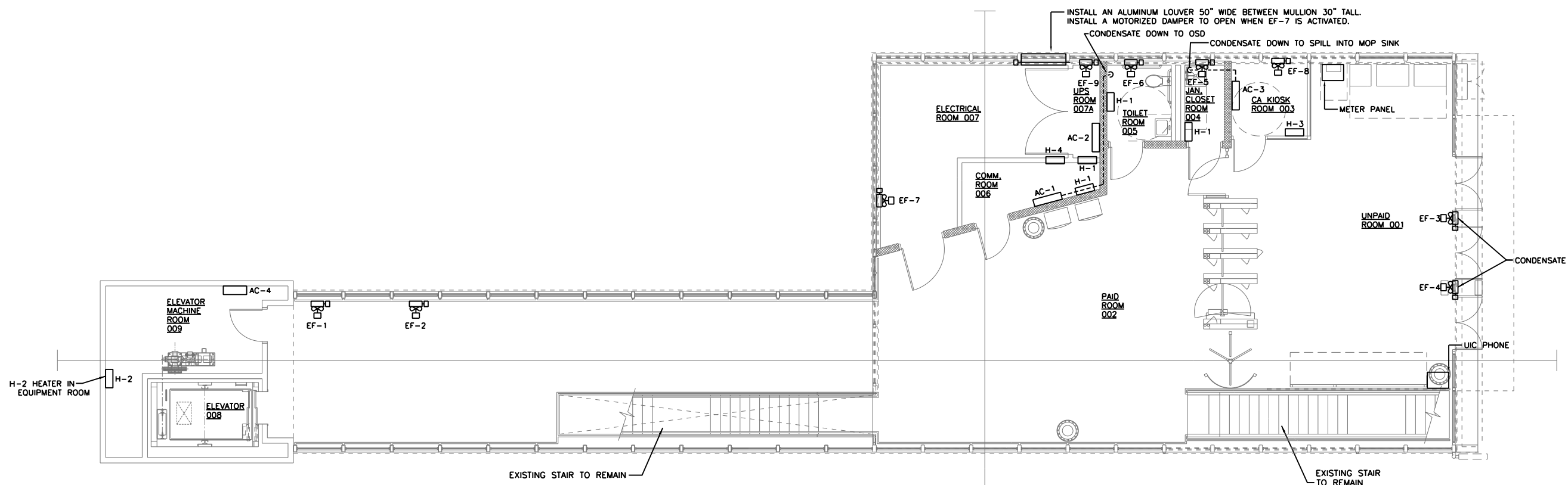
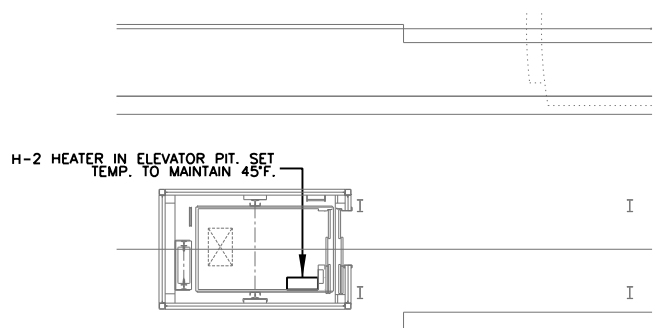


NOTES:

1. EXHAUST FANS EF-3, EF-4 & EF-7 TO BE BEHIND THE ARCHED LOUVERS ABOVE WINDOWS. BLANK OFF UNUSED LOUVERS. INSTALL MOTORIZED DAMPERS BETWEEN LOUVER AND FANS. WHEN FANS ARE ACTIVATED, DAMPERS TO OPEN IF FANS ARE NOT OPERATING; DAMPERS TO REMAIN CLOSED.
2. EXHAUST FANS EF-1, EF-2, EF-5, EF-6, EF-8 & EF-9 TO BE MOUNTED JUST BELOW CEILING. PROVIDE LOUVER AND MOTORIZED DAMPER TO ACCOMMODATE SIZE OF FAN BEING INSTALLED. IF FANS ARE ACTIVATED, DAMPERS TO OPEN. IF FANS ARE INACTIVE, DAMPERS TO REMAIN CLOSED.



1 STATION HOUSE MECHANICAL FLOOR PLAN
SCALE: 3/16" = 1'-0"



2 PLATFORM MECHANICAL PLAN
SCALE: 3/16" = 1'-0"

**THIS IS A BUY USA (AMERICAN) PROJECT,
ALL EQUIPMENT TO BE MANUFACTURED IN THE USA**

AAA ENGINEERING
WBE/DBE CERTIFIED
3940 West Touhy Avenue, Suite 210, Niles, IL 60714
Phone: 847-647-9999 • Fax: 847-647-4719

TranSystems

USER NAME = habit	DESIGNED -	REVISED
	CHECKED -	REVISED
PLOT SCALE = 10:8 '1' / in.	DRAWN -	REVISED
PLOT DATE = 10/28/2013	CHECKED -	REVISED

**STATE OF ILLINOIS
DEPARTMENT OF TRANSPORTATION**

**PEORIA STREET STATION
MECHANICAL STATION HOUSE & PARTIAL PLATFORM PLANS**

SHEET NO. 71 OF 117 SHEETS

PRELIMINARY NOT FOR CONSTRUCTION

MUN	SECTION	COUNTY	TOTAL SHEETS	SHEET NO.
2090	2013-011R	COOK	356	262
CONTRACT NO.			60W29	

ILLINOIS FED. AID PROJECT

8:43:07 PM 262-60W29.dgn