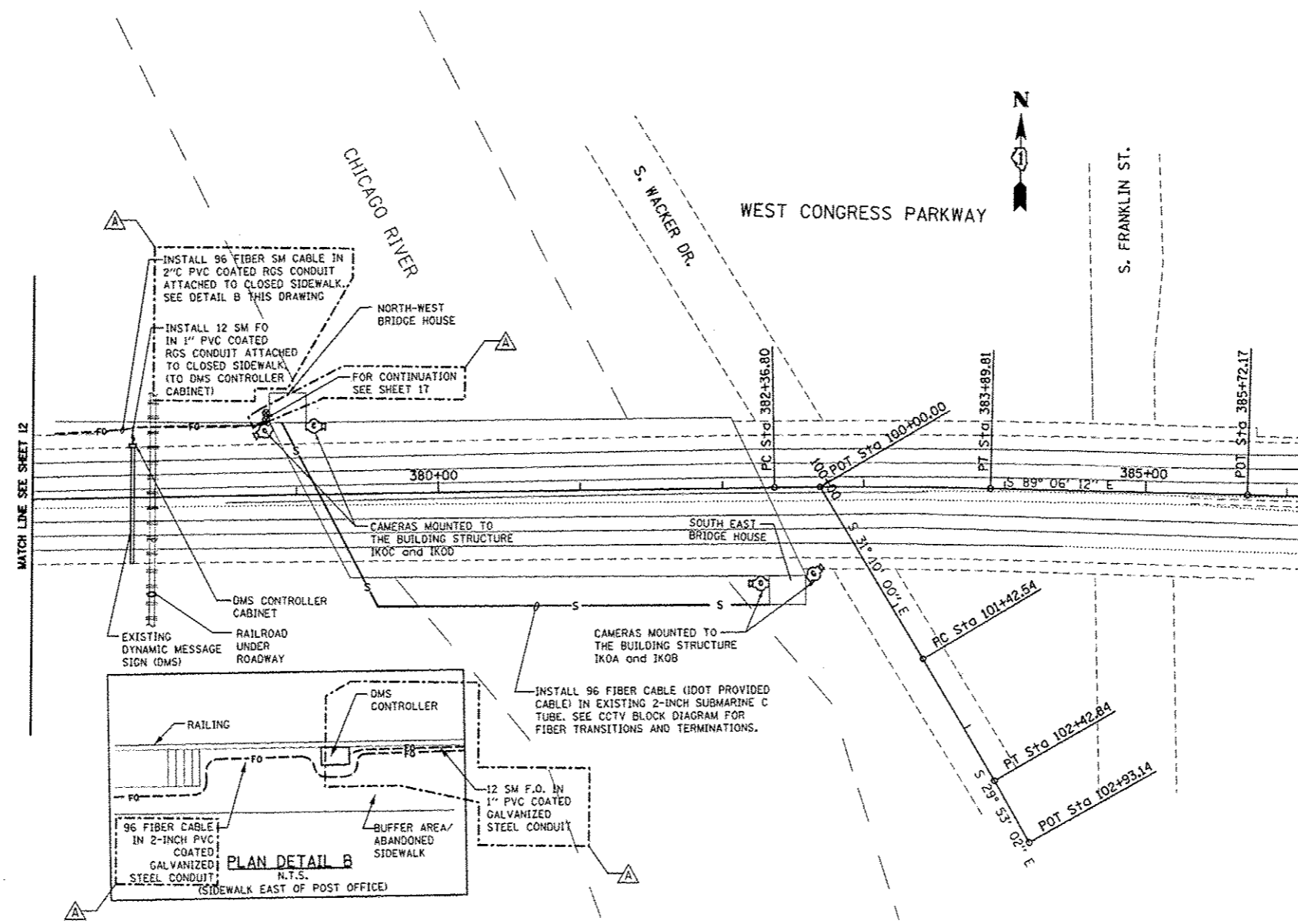
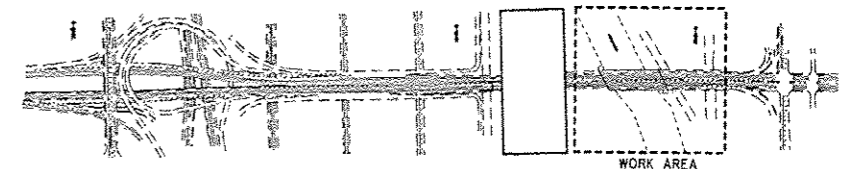


NOTES:

1. FOR GENERAL AND ELECTRICAL NOTES, SEE DWG'S 2, 3 & 4.
2. FOR ELECTRICAL SYMBOLS AND ABBREVIATIONS, SEE DWG. 5
3. FOR PANEL SCHEDULES, SEE DWG 22.
4. FOR EQUIPMENT DESCRIPTIONS SEE ELECTRICAL SPECIFICATIONS.
5. INSTALL NEW MINI F.O. PATCH PANEL AND F.O. TO RJ45 ETHERNET MEDIA ADAPTER IN EXISTING DMS CONTROLLER CABINET. CONNECT 4 STRANDS OF 12-STRAND LATERAL CABLE TO THE F.O. PATCH PANEL PORTS. POWER ETHERNET MEDIA CONVERTER WITH LOCAL 120VAC. INSTALL ETHERNET F.O. AND CAT5 PATCH CABLES TO ESTABLISH ETHERNET LINK BETWEEN DMS CONTROLLER AND F.O. BACKBONE. PROVIDE SECOND ETHERNET MEDIA CONVERTER TO IDOT AS LOOSE ITEM.
6. CONTRACTOR SHALL VERIFY PHYSICAL SPACE AND 120VAC POWER AVAILABILITY IN DMS CABINET FOR INSTALLATION OF MINI F.O. PATCH PANEL AND ETHERNET MEDIA CONVERTER AND SHALL PROVIDE SHOP DRAWINGS FOR ENGINEER'S APPROVAL.



MATCH LINE SEE SHEET 12



T:\816843\BCTV\BFiles from NY\89-17-2013\816843A-CCTV-E08-13_FO-Plan-3of3_rev10-17-2013.dgn
20-DEC-2013 08:18

PARSONS BRINCKERHOFF
210 West Madison Street
Suite 500
Chicago, IL 60606

| | | |
|----------------------|------------------------|----------------------------|
| USER NAME: pataid | DESIGNED: D. DRAKULICH | REVISED: 12/20/2013 D.C.P. |
| FILE NAME: | DRAWN: E. MALUSEL | REVISED: |
| PLT SCALE: NONE | CHECKED: S. STERN | REVISED: |
| PLT DATE: 10/16/2013 | DATE: 10/16/2013 | REVISED: |

**STATE OF ILLINOIS
DEPARTMENT OF TRANSPORTATION**

**CCTV SYSTEM, I-90/4 TO CONGRESS PARKWAY
CCTV FIBER OPTIC PLAN SHEET 2 OF 2**

SCALE: AS SHOWN SHEET NO. OF SHEETS STA. 353+46.00 TO STA. 382+50.00

| F.A.P. RTE. | SECTION | COUNTY | TOTAL SHEETS | SHEET NO. |
|--------------------|------------|--------|--------------|-----------|
| 389 | 2013-026-1 | COOK | 37 | 13 |
| CONTRACT NO. 60W49 | | | | |

FED. ROAD DIST. NO. 1 | ILLINOIS FED. AID PROJECT