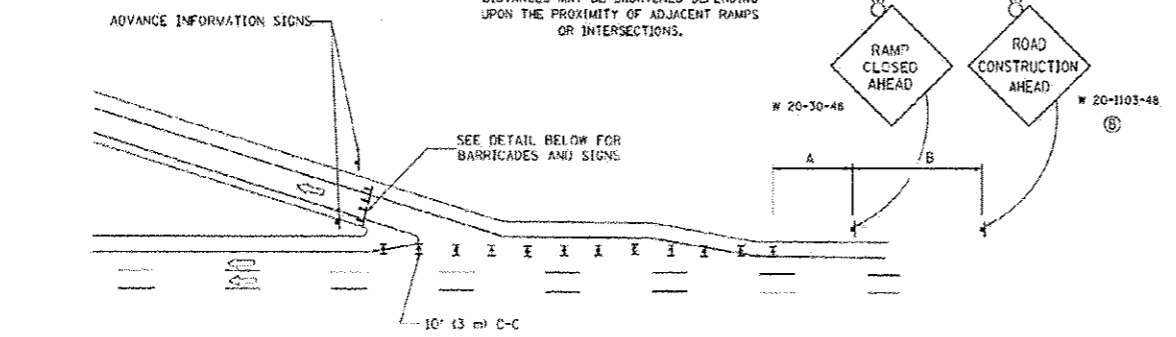


**ENTRANCE RAMP CLOSURE**

**SIGN SPACING TABLE**

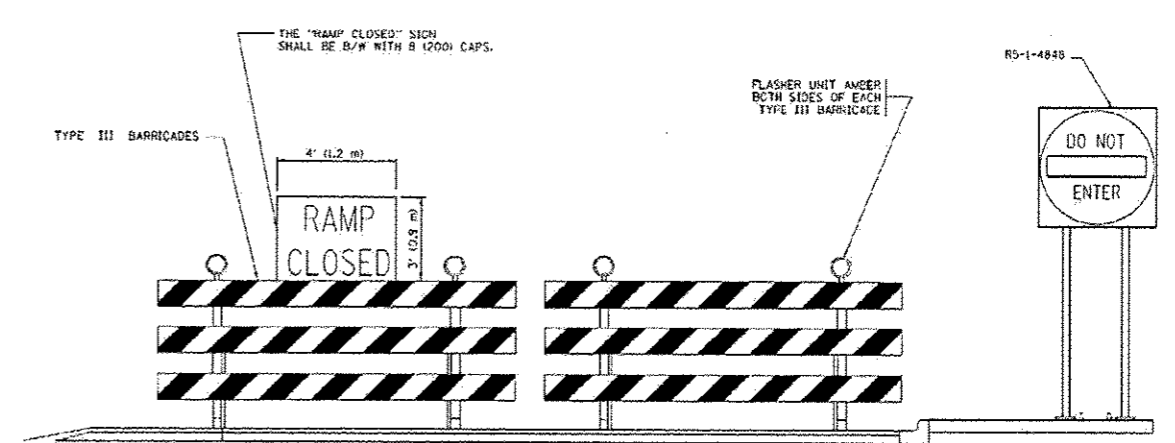
FACILITY	DISTANCE BETWEEN SIGNS	
	A	B
EXPRESSWAY ≥24 HOURS	1000' (300 m)	1500' (450 m)
EXPRESSWAY ≤24 HOURS	500' (150 m)	500' (150 m)
ARTERIAL 55 MPH	500' (150 m)	500' (150 m)
ARTERIAL 50-45 MPH	350' (100 m)	350' (100 m)
ARTERIAL <45 MPH	200' (60 m)	200' (60 m)

DISTANCES MAY BE SHORTENED DEPENDING UPON THE PROXIMITY OF ADJACENT RAMPS OR INTERSECTIONS.

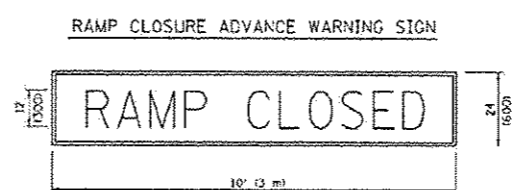


**EXIT RAMP CLOSURE**

- SYMBOLS**
- ▬ TYPE II BARRICADE OR DRUM WITH STEADY BURN MONO-DIRECTIONAL LIGHT
  - ▬ TYPE III BARRICADE WITH 2 FLASHING LIGHTS

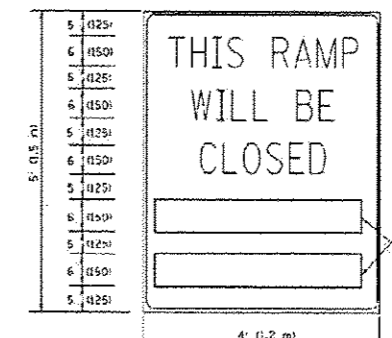


**DETAIL FOR REQUIRED BARRICADES & SIGNS**



BLACK LEGEND ON ORANGE BACKGROUND MOUNTED DIAGONALLY  
E MOD FONT  
1 (25) BORDER  
THESE SIGNS ARE REQUIRED ON ALL THE EXIT GUIDE SIGNS FOR EXIT RAMPS THAT WILL BE CLOSED FOR MORE THAN FOUR (4) CONSECUTIVE DAYS.

**RAMP CLOSURE ADVANCE INFORMATION SIGN**



BLACK LEGEND ON WHITE BACKGROUND  
1/2 (12) BORDER  
E MOD FONT  
THESE BLANK AREAS SHALL BE FILLED WITH THE DATES AND THE TIME THAT THE RAMP WILL BE CLOSED.

THESE SIGNS ARE REQUIRED ON BOTH SIDES OF THE RAMP, MINIMUM OF 1 WEEK IN ADVANCE OF THE CLOSURE.  
THESE SIGNS SHALL BE FABRICATED AND PAID FOR ACCORDING TO THE TEMPORARY INFORMATION SIGNING SPECIAL PROVISION

**GENERAL NOTES:**

- 1 CONES MAY BE SUBSTITUTED FOR DRUMS ON TYPE II BARRICADES DURING DAY OPERATIONS. CONES SHALL BE A MINIMUM OF 26 (700) HIGH.
- 2 STEADY BURN LIGHTS WILL NOT BE REQUIRED FOR DAY OPERATIONS.
- 3 A FLAGGER SHALL BE POSITIONED AT EACH CLOSED RAMP THAT IS OPEN TO CONSTRUCTION VEHICLES, PRECEDED BY A W20-7 FLAGGER WARNING SIGN.
- 4 ALL ROUTE MARKERS AND TRAILBLAZER ASSEMBLIES WHICH DIRECT MOTORISTS TO A CLOSED ENTRANCE RAMP SHALL BE COVERED WHEN THE RAMP IS CLOSED FOR MORE THAN FOUR (4) DAYS.
- 5 THE SIGNING AND BARRICADE WHICH IS REQUIRED BY THIS DETAIL SHALL BE INCLUDED IN THE COST OF TRAFFIC CONTROL AND PROTECTION (EXPRESSWAYS).
- 6 AUTHORIZATION FROM THE DISTRICT'S BUREAU OF TRAFFIC IS REQUIRED FOR ALL RAMP CLOSURES.
- 7 THE RAMP CLOSURE ADVANCE INFORMATION SIGNS SHALL BE ERRECTED IF THE CLOSURE TIME EXCEEDS TWENTY-FOUR (24) HOURS, ADDITIONAL ADVANCE WARNING SIGNS ON EXIT GUIDE SIGNING WILL BE REQUIRED FOR EXIT RAMP CLOSURES THAT EXCEED FOUR (4) DAYS IN LENGTH.
- 8 ROAD CONSTRUCTION AHEAD SIGNS MAY BE OMITTED WHEN THIS DETAIL IS USED IN CONJUNCTION WITH OTHER TRAFFIC CONTROL THAT ALREADY INCLUDES A ROAD CONSTRUCTION AHEAD SIGN.
- 9 ARTERIAL ROAD CONSTRUCTION AHEAD SIGNS SHALL BE INSTALLED ON THE LEFT SIDE OF TRAFFIC IF THE MEDIAN IS MORE THAN 10 FT WIDE.

ALL DIMENSIONS ARE IN INCHES (MILLIMETERS) UNLESS OTHERWISE SHOWN.

FILE NAME	USER NAME	DESIGNED	REVISED
...	...	DWS	JAF 02-06
		DRAWN	REVISED
		DCP	SPR 01-07
		CHECKED	REVISED
		SN	SPR 12-09
		DATE	REVISED
		02-83	MD 06-13

**STATE OF ILLINOIS  
DEPARTMENT OF TRANSPORTATION**

ENTRANCE AND EXIT RAMP CLOSURE DETAILS		F&P RTE.	SECTION	COUNTY	TOTAL SHEETS	SHEET NO.
SCALE: NONE			TC-08			
SHEET NO. 1 OF 1 SHEETS		STA.	TO STA.			

TR15843ARCTVRCADD@60M49-SPT-37-std-TC-8-3EA.dgn 19-DEC-2013 10:18

**PARSONS BRINCKERHOFF**  
230 West Monroe Street  
Suite 900  
Chicago, IL 60606

FILE NAME	USER NAME	DESIGNED	REVISED
...	...	SN	
		DRAWN	REVISED
		DCP	
		CHECKED	REVISED
		SN	
		DATE	REVISED
		10/18/2013	

**STATE OF ILLINOIS  
DEPARTMENT OF TRANSPORTATION**

ENTRANCE AND EXIT RAMP CLOSURE DETAILS		F&P RTE.	SECTION	COUNTY	TOTAL SHEETS	SHEET NO.
SCALE: NONE			2013-026-1	COOK	37	36A
SHEET NO. OF SHEETS		STA. 353+46.00	TO STA. 382+50.00			

CCTV SYSTEM, I-90/94 TO CONGRESS PARKWAY		F&P RTE.	SECTION	COUNTY	TOTAL SHEETS	SHEET NO.
ENTRANCE AND EXIT RAMP CLOSURE DETAILS			2013-026-1	COOK	37	36A
SHEET NO. OF SHEETS		STA. 353+46.00	TO STA. 382+50.00			

Added Sheet 12-30-13