

FOR INDEX OF SHEETS, SEE SHEET NO. 2

THE PROJECT IS LOCATED
IN THE CITY OF CHICAGO

TRAFFIC DATA

FAI 290/CONGRESS PARKWAY

ADT (2012) = 66,000

POSTED SPEED LIMIT 45 MPH

FAI 90/94

ADT (2012) = 191,300

POSTED SPEED LIMIT 45 MPH

STATE OF ILLINOIS
DEPARTMENT OF TRANSPORTATION
DIVISION OF HIGHWAYS

**PROPOSED
HIGHWAY PLANS**

FAI 90/94 AT I-290/CONGRESS PARKWAY(CIRCLE INTERCHANGE)
& AT SOUTH BRANCH CHICAGO RIVER

SURVEILLANCE
SECTION 2013-026-1
COOK COUNTY
C-91-306-13

PROJECT NO.: ACNHPP-000S (956)

F.A.I. RTE.	SECTION	COUNTY	TOTAL SHEETS	SHEET NO.
389	2013-026-1	COOK	37	1
FED. ROAD DIST. NO. 1	ILLINOIS			

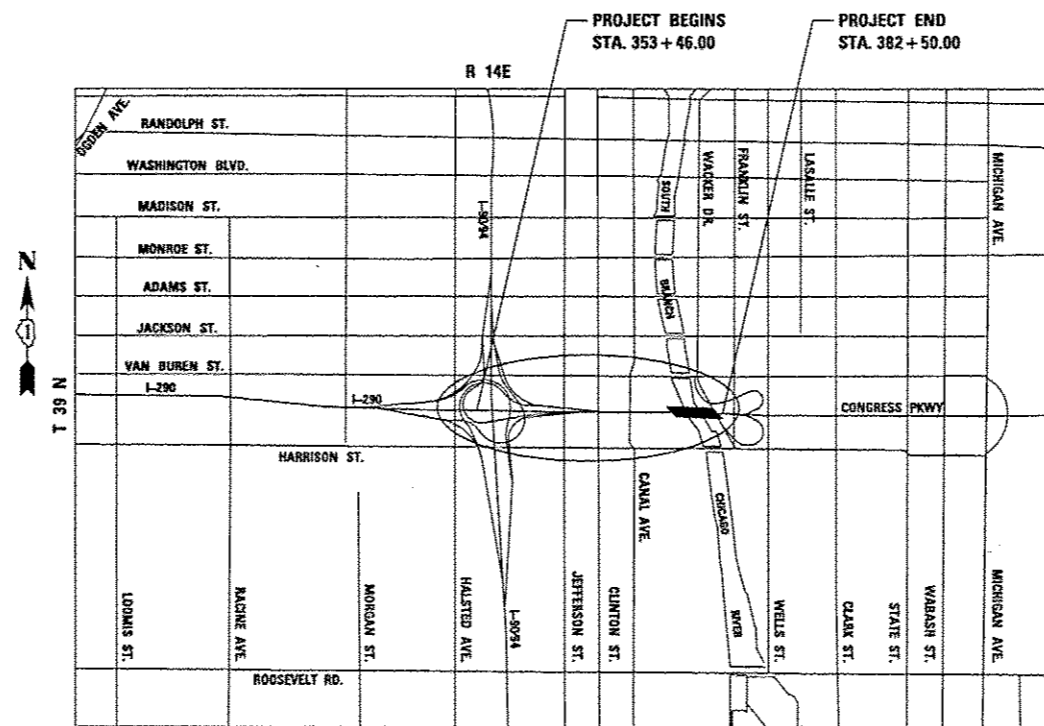
*37 + 1 = 38

*38 + 1 = 39

D-91-306-13
CONTRACT NO. 60W49



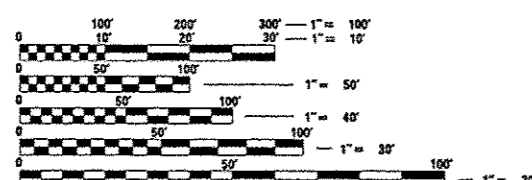
LOCATION OF SECTION INDICATED THIS: -



LOCATION MAP

SCALE: 1 IN = 2000 FT

TOTAL GROSS AND NET LENGTH OF PROJECT = 2904 FT. = .550 MI



FULL SIZE PLANS HAVE BEEN PREPARED USING STANDARD ENGINEERING SCALES. REDUCED SIZED PLANS WILL NOT CONFORM TO STANDARD SCALES. IN MAKING MEASUREMENTS ON REDUCED PLANS, THE ABOVE SCALES MAY BE USED.

C.U.A.N.
DIGGER - CHICAGO UTILITY ALERT NETWORK
1-312-744-7000

CONTRACT NO. 60W49

STATE OF ILLINOIS
DEPARTMENT OF TRANSPORTATION
DIVISION OF HIGHWAYS
SUBMITTED *Oct 16, 2013*
John F. ...
DEPUTY DIRECTOR OF HIGHWAYS, REGION ONE ENGINEER
Dec 6, 2013
John D. ...
ENGINEER OF DESIGN AND ENVIRONMENT
Dec 6, 2013
Omer Osman, P.E.
DIRECTOR OF HIGHWAYS, CHIEF ENGINEER



AHMAD M. HAMMAD, S.E., P.E.
LICENSE NO.: 081-005467
EXPIRES: November 30, 2014
DATE:

**PARSONS
BRINCKERHOFF**
230 WEST MONROE STREET, SUITE 900
CHICAGO, ILLINOIS 60606
TEL: 312-782-8150 FAX: 312-782-1684

PRINTED BY THE AUTHORITY
OF THE STATE OF ILLINOIS

Rev. 12-26-13

DESIGN - CONSULTANT SERVICES, DISTRICT ONE - BRIAN KUTTAB/PROJECT MANAGER 847-705-4431

INDEX OF SHEETS

1. COVER SHEET
2. INDEX OF SHEETS, GENERAL NOTES AND STATE STANDARDS
3. GENERAL ELECTRICAL NOTES
4. ELECTRICAL NOTES
5. ELECTRICAL SYMBOLS AND ABBREVIATIONS
6. SUMMARY OF QUANTITIES
- 6A. SUMMARY OF QUANTITIES
7. ALIGNMENT AND BENCHMARKS SHEET 1 OF 2
8. ALIGNMENT AND BENCHMARKS SHEET 2 OF 2
9. KEY PLAN
10. CCTV SYSTEM BLOCK DIAGRAM
11. HALSTED STREET AND HARRISON STREET - ITS PLANS PROPOSED ITS
12. CCTV FIBER OPTIC PLAN SHEET 1 OF 2
13. CCTV FIBER OPTIC PLAN SHEET 2 OF 2
14. EAST SIDE DOCK LEVEL
15. EAST SIDE MEZZANINE LEVEL AND OPERATOR'S ROOM
16. EAST SIDE SIDEWALK LEVEL
17. WEST SIDE DOCK LEVEL
18. WEST SIDE MEZZANINE LEVEL
19. WEST SIDE SIDEWALK LEVEL
20. CCTV DETAIL AT JEFFERSON STREET
21. CCTV CAMERA ATTACHED TO BRIDGE HOUSE
22. PANEL SCHEDULES
23. TWENTY FOUR FIBER LATERAL CABLE FIBER ASSIGNMENTS
24. TWENTY FOUR AND NINETY SIX TRUNK CABLE FIBER ASSIGNMENTS
25. NINETY SIX SUBMARINE TRUNK CABLE FIBER ASSIGNMENTS
26. PUMP STATION DETAILS
27. TRUNK CABLE FIBER ASSIGNMENTS
28. DISTRIBUTION CABLE FIBER ASSIGNMENTS
29. TWELVE FIBER LATERAL CABLE FIBER ASSIGNMENTS
30. TOWER FOUNDATION PLANS 1 OF 2
31. TOWER FOUNDATION PLANS 2 OF 2
- 32 THRU 36A DISTRICT 1 STANDARDS
37. BRIDGE HOUSES AND ENCLOSURES

STATE STANDARDS

- 701101-03 OFF-ROAD OPERATIONS, MULTILANE, 15' (4.5 m) TO 24" (600 mm) FROM PAVEMENT EDGE
- 701106-02 OFF-ROAD OPERATIONS, MULTILANE, MORE THAN 15' (4.5 m) AWAY
- 701400-07 APPROACH TO LANE CLOSURE, FREEWAY/EXPRESSWAY
- 701401-08 LANE CLOSURE, FREEWAY/EXPRESSWAY
- 701422-06 LANE CLOSURE MULTI LANE 45-55MPH
- 701411-08 LANE CLOSURE MULTI LANE - ENTR OR EXIT RAMP 45MPH+
- 701901-02 TRAFFIC CONTROL DEVICES
- 701426-02 LANE CLOSURE, MULTI LANE INTERMITTENT OR MOVING OPERATION FOR SPEEDS ≥ 45 MPH
- 701428 TRAFFIC CONTROL, SETUP AND REMOVAL FREEWAY/EXPRESSWAY
- 701446 TWO LANE CLOSURE FREEWAY/EXPRESSWAY

DISTRICT 1 STANDARDS

- TC-8 ENTRANCE AND EXIT RAMP CLOSURE DETAILS
- TC-9 SINGLE AND MULTI-LANE WEAVE
- TC-10 TRAFFIC CONTROL AND PROJECTION FOR SIDEROADS, INTERSECTIONS AND DRIVEWAYS
- TC-17 PARTIAL RAMP OR SHOULDER CLOSURE
- TC-18 SIGNING FOR FLAGGING OPERATIONS AT WORK ZONE
- TC-22 ARTERIAL ROAD INFORMATION SIGN

GENERAL NOTES:

1. ALL ELEVATIONS SHOWN ON THE PLANS ARE BASED ON THE CHICAGO CITY DATUM. THE CONVERSION EQUATION FROM CCD TO NAVD 88 IS: NAVD 88 ELEVATION=CCD + 579.19.
2. ALL DIMENSIONS ARE IN FEET UNLESS OTHERWISE NOTED.
3. ALL WORK SHALL BE PERFORMED IN ACCORDANCE WITH THE LATEST CODES, STANDARDS AND THE IDOT STANDARD SPECIFICATIONS FOR ROAD AND BRIDGE CONSTRUCTION ADOPTED JANUARY 1, 2014, AND SUPPLEMENTAL SPECIFICATIONS AND RECURRING SPECIAL PROVISIONS.

GENERAL NOTES CONT'D:

4. BEFORE STARTING ANY EXCAVATION, THE CONTRACTOR SHALL CALL "JULIE" AT 800-892-0123 OR 811 FOR FIELD LOCATIONS OF BURIED ELECTRIC, TELEPHONE, AND GAS FACILITIES. (48 HOUR NOTIFICATION IS REQUIRED.)
5. THE LOCATION OF EXISTING FACILITIES, AS SHOWN ON THE DRAWINGS, REPRESENT DATA RECEIVED FROM VARIOUS SOURCES. IT IS NOT GUARANTEED TO BE CORRECT OR ALL INCLUSIVE. THE CONTRACTOR SHALL CONDUCT HIS OWN INVESTIGATION INTO THE LOCATION, SIZE, CONFIGURATION AND NATURE OF ANY AND ALL EXISTING FACILITIES WHICH MAY INTERFERE WITH THE WORK UNDER THIS CONTRACT. ANY EXISTING FACILITIES (FIBER OPTIC CABLE, ELECTRIC OR ANY OTHER COMMUNICATIONS CABLES OR EQUIPMENT) NEAR PROPOSED WORK AREAS WHICH ARE TO REMAIN IN SERVICE SHALL BE RECONFIGURED AND BE FULLY PROTECTED BY THE CONTRACTOR. ANY DAMAGE CAUSED BY THE CONSTRUCTION OPERATIONS SHALL BE IMMEDIATELY REPAIRED AT NO ADDITIONAL COST TO IDOT TO THE SATISFACTION OF THE ENGINEER.
6. THE CHICAGO TRANSIT AUTHORITY HAS EXISTING AND/OR ABANDONED FACILITIES IN THE AREA. SUCH FACILITIES MAY INCLUDE ELEVATED RAIL TRACKS, SUBWAYS, UNDERGROUND DUCT LINES, AND/OR FORMER STREETCAR TRACKS. COPIES OF DRAWINGS WILL BE SUBMITTED TO THE OUC OFFICE. CAUTION SHOULD BE EXERCISED WHEN EXCAVATING NEAR STREETCAR TRACKS. MEMBERS OF THE CHICAGO AREA JOINT ELECTROLYSIS COMMITTEE MAY USE STREETCAR TRACKS AND NEGATIVE CABLE. PLEASE CONTACT MR. YOUSEF TABIB OF COMED BEFORE CUTTING OR REMOVING ANY BURIED STREETCAR RAILS. HE MAY BE REACHED AT (630) 576-6952. THE CONTRACTOR SHALL ALSO COORDINATE WITH MR. DAVID HEARD AT 312-681-3862 FOR TRANSIT TUNNELS AND ADJACENT APPURTENANCES.
7. THE CONTRACTOR SHALL COORDINATE CONSTRUCTION ACTIVITIES WITH AFFECTED UTILITY COMPANIES AND MUNICIPALITIES. THE CONTRACTOR SHALL USE ALL NECESSARY PRECAUTIONS AND PROTECTIVE MEASURES REQUIRED TO MAINTAIN EXISTING UTILITIES AND THEIR OPERATION.
8. THE CONTRACTOR WILL NOT BE ALLOWED TO SET UP A YARD OR FIELD OFFICE ON STATE PROPERTY WITHOUT WRITTEN PERMISSION FROM THE DEPARTMENT.
9. WHEN ARTIFICIAL LIGHTING IS USED IN NIGHT OPERATIONS THE CONTRACTOR SHALL EXERCISE THE UTMOST PRECAUTIONS IN PREVENTING ADVERSE VISIBILITY TO THE MOTORING PUBLIC AND ADJOINING RESIDENTIAL AREAS.
10. ALL FRAMES, GRATES, PAVEMENT, FENCES, DELINEATORS AND APPURTENANCES DAMAGED BY THE CONTRACTOR DURING CONSTRUCTION WILL BE REPLACED BY THE CONTRACTOR AT THEIR EXPENSE.
11. THE CONTRACTOR SHALL REQUEST AND GAIN APPROVAL FROM THE ILLINOIS DEPARTMENT OF TRANSPORTATION'S EXPRESSWAY TRAFFIC OPERATIONS ENGINEER AT www.idotil.com TWENTY-FOUR (24) HOURS IN ADVANCE OF ALL DAILY LANE, RAMP AND SHOULDER CLOSURES AND ONE WEEK IN ADVANCE OF ALL PERMANENT AND WEEKEND CLOSURES ON ALL FREEWAYS AND/OR EXPRESSWAYS IN DISTRICT ONE.
12. THE CONTRACTOR SHALL CONTACT THE EXPRESSWAYS TRAFFIC CONTROL SUPERVISOR AT (847) 705-4155 AND THE ARTERIALS SUPERVISOR AT (847) 705-4470 A MINIMUM OF 72 HOURS PRIOR TO THE START OF WORK.
13. IT IS THE CONTRACTOR'S RESPONSIBILITY TO VERIFY ALL DIMENSIONS, ELEVATIONS, AND EXISTING FIELD CONDITIONS PRIOR TO BIDDING, ORDERING MATERIALS, OR BEGINNING OF CONSTRUCTION ON THIS PROJECT, SPECIFICALLY AS THEY RELATE TO LUMP SUM ITEMS.
14. ALL DAMAGE TO DEPARTMENT OWNED UNDERGROUND FACILITIES CAUSED BY THE CONTRACTOR, SHALL BE REPAIRED TO THE SATISFACTION OF THE DEPARTMENT AT THE CONTRACTOR'S EXPENSE. THIS SHALL INCLUDE ALL TEMPORARY REPAIRS REQUIRED TO KEEP THE FACILITY OPERATIONAL WHILE MATERIAL IS BEING OBTAINED TO MAKE PERMANENT REPAIRS. SPlicing OF FIBER OPTIC CABLE SHALL NOT BE ALLOWED. FIBER OPTIC CABLE SHALL BE REPLACED TO EXISTING SPLICE LOCATION TO EXISTING SPLICE LOCATION.
15. FLUORESCENT VESTS AND HARD HATS: ALL CONSTRUCTION PERSONNEL WILL BE REQUIRED TO WEAR FLUORESCENT ORANGE, FLUORESCENT YELLOW/GREEN OR A COMBINATION OF FLUORESCENT ORANGE AND FLUORESCENT YELLOW/GREEN VESTS AND HARD HATS AT ALL TIMES WHILE ON THE CONSTRUCTION SITE.
16. DURING CONSTRUCTION OPERATIONS THE CONTRACTOR SHALL TAKE NECESSARY PRECAUTIONS TO PROTECT ADJACENT EQUIPMENT FROM DAMAGE OR INTERFERENCE. THE CONTRACTOR SHALL ALSO BE RESPONSIBLE FOR KEEPING THE WORK AREA FREE FROM DEBRIS. THIS WORK SHALL BE INCIDENTAL TO THE CONTRACT.
17. THE STANDARD DRAWINGS LISTED IN THE PLANS INDEX ARE INTENDED TO BE THE LATEST REVISIONS AND SHALL TAKE PRECEDENCE OVER EARLIER REVISIONS THAT MAY BE REFERRED TO ELSEWHERE IN THE PLANS OR SPECIAL PROVISIONS.
18. ANY EXCAVATION REQUIRED ON THE PROJECT FROM THE EXISTING BRIDGE HOUSES TO THE WEST SIDE OF DES PLAINES STREET WILL REMAIN ON THE PROJECT SITE, TAKEN TO THE CIRCLE INTERCHANGE AT A LOCATION AS DIRECTED BY THE ENGINEER AND GRADED ACCORDINGLY.
19. EXCAVATION WEST OF DES PLAINES FOR SURVEILLANCE TOWERS, TRENCHES AND OTHER EXCAVATION WILL BE HANDLED AS POTENTIAL SPECIAL WASTE AS STIPULATED IN THE SUMMARY OF QUANTITIES.
20. A FIELD OFFICE IS NOT INCLUDED AS PART OF THIS PROJECT, THE CONTRACTOR WILL BE PROVIDED OFFICE SPACE AT THE IDOT FACILITY AT 900 SOUTH DES PLAINES STREET, CHICAGO IL, 60607.
21. PRIOR TO START OF WORK CONTRACTOR SHALL CONTACT IDOT ELECTRICAL MAINTENANCE CONTRACTOR OR RESPONSIBLE CONTRACTOR TO LOCATE IDOT ELECTRICAL FACILITIES LOCATED WITHIN CONTRACT LIMITS.

NOTE: BOXED ITEMS ARE INCLUDED IN THE COST OF THE CONTRACT.

TRAFFIC CONTROL PLAN NOTES:

1. TRAFFIC CONTROL AND PROTECTION SHALL CONSIST OF SHOULDER AND LANE CLOSURES AND RAMP TAPER MODIFICATIONS, SIDE ROAD LANE REDUCTIONS AND PARKING PROHIBITIONS TO ALLOW WORK ALONG ROADWAYS, IN ACCORDANCE WITH FOLLOWING IDOT HIGHWAY STANDARDS AND DISTRICT ONE STANDARDS FOR TRAFFIC CONTROL:
 - 701101-03 OFF-ROAD OPERATIONS, MULTILANE, 15' (4.5 m) TO 24" (600 mm) FROM PAVEMENT EDGE
 - 701106-02 OFF-ROAD OPERATIONS, MULTILANE, MORE THAN 15' (4.5 m) AWAY
 - 701400-07 APPROACH TO LANE CLOSURE, FREEWAY/EXPRESSWAY
 - 701401-08 LANE CLOSURE, FREEWAY/EXPRESSWAY
 - 701422-06 LANE CLOSURE MULTI LANE 45-55MPH
 - 701411-08 LANE CLOSURE MULTI LANE - ENTR OR EXIT RAMP 45MPH+
 - 701426-02 LANE CLOSURE, MULTI LANE INTERMITTENT OR MOVING OPERATION FOR SPEEDS ≥ 45 MPH
 - 701428 TRAFFIC CONTROL, SETUP AND REMOVAL FREEWAY/EXPRESSWAY
 - 701446 TWO LANE CLOSURE FREEWAY/EXPRESSWAY
 - TC-8 ENTRANCE AND EXIT RAMP CLOSURE DETAILS
 - TC-9 SINGLE AND MULTI-LANE WEAVE
 - TC-10 TRAFFIC CONTROL AND PROJECTION FOR SIDEROADS, INTERSECTIONS AND DRIVEWAYS
 - TC-17 PARTIAL RAMP OR SHOULDER CLOSURE
 - TC-18 SIGNING FOR FLAGGING OPERATIONS AT WORK ZONE
 - TC-22 ARTERIAL ROAD INFORMATION SIGN
 - 701901-02 TRAFFIC CONTROL DEVICES

THESE STANDARDS WILL NOT BE PAID FOR AS SEPARATELY BUT WILL BE INCLUDED IN THE PRICE FOR TRAFFIC CONTROL AND PROTECTION (EXPRESSWAYS) AS A LUMP SUM PAY ITEM.
2. THE CONTRACTOR SHALL MAINTAIN TRAFFIC IN ACCORDANCE WITH IDOT SPECIAL PROVISIONS, IDOT HIGHWAY STANDARDS, IDOT STANDARD SPECIFICATIONS, PLAN SPECIFICATIONS, AND AS DIRECTED BY THE ENGINEER.
3. THE CONTRACTOR SHALL COORDINATE CONSTRUCTION STAGING AND TRAFFIC CONTROL WORK WITH ADJOINING OR OVERLAPPING CONTRACTS. THE COST OF ANY ADDITIONAL TRAFFIC CONTROL AND/OR TEMPORARY CONSTRUCTION ITEMS REQUIRED FOR SUCH COORDINATION WILL NOT BE PAID FOR SEPARATELY BUT SHALL BE INCLUDED IN THE CONTRACT UNIT PRICE FOR "TRAFFIC CONTROL AND PROTECTION (EXPRESSWAYS)."
4. THE TRAFFIC CONTROL PLAN SHALL SERVE AS A GUIDE FOR SAFE DIVERSION OF TRAFFIC DURING EXECUTION OF THIS CONTRACT. HOWEVER, THE CONTRACTOR MAY IMPROVE OR MODIFY THE TRAFFIC CONTROL PLAN TO MEET CONSTRUCTION NEEDS BUT NOT AT THE EXPENSE OF PUBLIC SAFETY OR CONVENIENCE. ANY CHANGES TO THE TRAFFIC CONTROL PLAN SHALL BE SUBMITTED TO THE ENGINEER FOR APPROVAL.
5. THE ENGINEER SHALL BE INFORMED 21 DAYS IN ADVANCE OF ANY CHANGE TO THE TRAFFIC CONTROL PLAN.
6. TRAFFIC CONDITIONS, ACCIDENTS AND OTHER UNFORSEEN EMERGENCY CONDITIONS MAY REQUIRE THE ENGINEER TO RESTRICT, MODIFY OR REMOVE LANE CLOSURES OR CHANNELIZATIONS PER THE TRAFFIC CONTROL PLAN. THE CONTRACTOR SHALL MAKE THE NECESSARY ADJUSTMENTS DIRECTED BY THE ENGINEER WITHOUT DELAY. THE CONTRACTOR SHALL RESPOND WITHIN 30 MINUTES FROM THE TIME OF NOTIFICATION BY THE ENGINEER TO ANY REQUEST MADE BY THE ENGINEER FOR CORRECTION, IMPROVEMENT, OR MODIFICATION OF THE MAINTENANCE OF TRAFFIC CONTROL DEVICES.
7. ALL TRAFFIC CONTROL DEVICES USED FOR TRAFFIC CONTROL AND PROTECTION SHALL BE REFLECTORIZED PRIOR TO INSTALLATION AND CLEANED AS SPECIFIED IN TRAFFIC CONTROL AND PROTECTION SPECIAL PROVISIONS OR AS DIRECTED BY THE ENGINEER.
8. THE CONTRACTOR SHALL COVER OR REMOVE ALL CONFLICTING EXISTING SPEED LIMIT SIGNS, GUIDE SIGNS, OR ANY OTHER CONFLICTING SIGNS FOR THE DURATION OF THE CONSTRUCTION. THE CONTRACTOR SHALL SUBMIT THE METHOD IN WHICH THE SIGNS WILL BE COVERED TO THE ENGINEER FOR APPROVAL.
9. LOCATIONS OF CHANGEABLE MESSAGE SIGNS SHALL BE DETERMINED BY THE ENGINEER.
10. DRUMS OR TYPE II BARRICADES AND VERTICAL PANELS SHALL BE EQUIPPED WITH MONODIRECTIONAL STEADY BURN LIGHTS AND SHALL BE PLACED AT 100' INTERVALS ALONG WORK ZONES, AT 50' INTERVALS IN CURVES, AND AT 50' INTERVALS IN TAPER SECTIONS AS INDICATED IN THE IDOT HIGHWAY STANDARDS OR AS DIRECTED BY THE ENGINEER.
11. THE FURNISHING, INSTALLING, AND RELOCATION OF ALL TRAFFIC SIGNS SHALL BE IN ACCORDANCE WITH THE MANUAL ON UNIFORM TRAFFIC CONTROL DEVICES FOR STREETS AND HIGHWAYS (MUTCD), ILLINOIS SUPPLEMENT TO THE MUTCD, IDOT SPECIAL PROVISIONS, IDOT HIGHWAY STANDARDS, IDOT STANDARD SPECIFICATIONS, CONTRACT SPECIFICATIONS, AND AS DIRECTED BY THE ENGINEER. ALL CONFLICTING TRAFFIC SIGNS SHALL BE COVERED AS DIRECTED BY THE ENGINEER. THIS WORK SHALL BE INCLUDED IN THE COST FOR TRAFFIC AND PROTECTION (EXPRESSWAYS).
12. THE CONTRACTOR SHALL PROVIDE ADVANCE NOTICE OF CONSTRUCTION SIGNING. SIGNS SHALL BE ERECTED ONE WEEK IN ADVANCE OF THE START OF CONSTRUCTION AND SHALL BE REMOVED OR COVERED WHEN PROTECTION IS NOT REQUIRED.
13. ALL ARROW BOARDS SHALL HAVE SOLAR POWER CAPABILITY.
14. ALL TRAFFIC CONTROL DEVICES SHALL BE REMOVED, COVERED OR TURNED AWAY FROM THE TRAFFIC IMMEDIATELY WHEN THEY ARE NO LONGER NECESSARY. WHEN A SIGN IS COVERED, ITS POST SHALL HAVE A REFLECTIVE 3" BY 6" DELINEATOR INSTALLED.
15. LOCAL ROADS, DRIVEWAYS AND PROPERTY ACCESS DRIVES ADJACENT TO CONGRESS PARKWAY (S. TILDEN STREET, WACKER DRIVE) MUST REMAIN OPEN TO TRAFFIC AT ALL TIMES DURING CONSTRUCTION. SHOULD A TEMPORARY CLOSURE BE NECESSARY, THE CONTRACTOR SHALL NOTIFY THE STATE AND THE AFFECTED PROPERTY OWNER TWENTY-FOUR (24) HOURS IN ADVANCE OF SUCH CLOSURE. CONSTRUCTION ACTIVITIES SHALL BE EXPEDITED AND ACCESS RESTORED WITHIN AN ADEQUATE TIME FRAME AS DIRECTED BY THE ENGINEER.

T:\1684348\CTV\8C\ADD\860W49-sht-02-inx.dgn 19-DEC-2013 18:15

PARSONS BRINCKERHOFF
238 West Monroe Street
Suite 500
Chicago, IL 60606

USER NAME: goteid	DESIGNED - SN	REVISED - 12/20/2013 D.C.P.
FILE NAME	DRAWN - OCP	REVISED
PLOT SCALE: NONE	CHECKED - SN	REVISED
PLOT DATE: 12/19/2013	DATE - 10/18/2013	REVISED

**STATE OF ILLINOIS
DEPARTMENT OF TRANSPORTATION**

CCTV SYSTEM, I-904 TO CONGRESS PARKWAY
INDEX OF SHEETS, GENERAL NOTES AND STATE STANDARDS

F.A.P. RTE.	SECTION	COUNTY	TOTAL SHEETS	SHEET NO.
389	2013-026-1	COOK	37	2
CONTRACT NO. 60W49			FED. ROAD DIST. NO. 1 (ILLINOIS) FED. AID PROJECT	

SCALE: NONE SHEET NO. OF SHEETS STA. 393+46.00 TO STA. 392+50.00

A. ELECTRICAL GENERAL NOTES:

1. ALL WORK SHALL BE PERFORMED IN ACCORDANCE WITH THE LATEST REQUIREMENTS OF N.E.C., AASHTO, AND LOCAL ORDINANCES AND REGULATIONS. COORDINATE ALL ELECTRICAL WORK WITH IDOT AND ALL OTHER CONTRACTORS ON THE SITE.
2. INDOOR ELECTRICAL CONTROL CABINETS SHALL HAVE A MINIMUM NEMA-12 RATING OR AS INDICATED. ALL OUTDOOR CABINETS SHALL BE STAINLESS STEEL TYPE 316, AND SHALL BE NEMA 4X RATED UNLESS OTHERWISE NOTED.
3. LOCATIONS AND DIMENSIONS OF ELECTRICAL EQUIPMENT AND ASSOCIATED DEVICES AND CONDUIT RUNS ARE APPROXIMATE BASED ON EXISTING CONDITIONS AND BEST AVAILABLE PERTINENT INFORMATION AND PLANS. HOWEVER, THE CONTRACTOR SHALL BE RESPONSIBLE FOR FIELD VERIFYING EXACT LOCATIONS AND PROPOSED EQUIPMENT DIMENSIONS AS PART OF THE CONSTRUCTION AND SHOP DRAWING SUBMITTAL PROCESS. AS-BUILT-DRAWINGS SHALL BE BASED ON APPROVED SHOP DRAWINGS AND ON ACTUAL FIELD SURVEYS, MEASUREMENTS, AND APPROVED INSTALLED EQUIPMENT ONLY.
4. FURNISH AND INSTALL ALL REQUIRED CONDUIT, WIRE AND CABLE, FITTINGS, BOXES, HARDWARE, ETC. IN ORDER TO MAKE A COMPLETE ELECTRICAL/ COMMUNICATION SYSTEM READY FOR OPERATION. DRAWINGS FOR APPROVAL SHOWING LAYOUT DETAILS SHALL BE SUBMITTED PRIOR TO ANY INSTALLATION WORK.
5. ALL CONDUIT AND WIRING FURNISHED AND INSTALLED UNDER THIS CONTRACT SHALL BE NEW AND MEET NEC AND AASHTO CODE REQUIREMENTS. EXISTING WIRING NOT USED SHALL BE DISCONNECTED AND CLEARLY MARKED AS SUCH. CONDUIT NOT REMOVED AND NOT USED SHALL BE CAPPED. ALL CONDUIT AND FITTINGS SHALL BE HOT-DIP GALVANIZED RIGID STEEL. ADDITIONALLY, ALL EXTERNAL CONDUITS SHALL BE PVC-COATED. MOUNT ALL CONDUIT RUNS ON PVC-COATED GALVANIZED STEEL UNISTRUT (KINDORF) CHANNELS OR APPROVED EQUAL. MOUNTING HARDWARE SHALL BE STAINLESS STEEL, TYPE 316.
6. EXACT CONDUITS, JUNCTION AND PULL BOX LOCATIONS, MOUNTING HARDWARE AND SUPPORTS, AND STUB-UP LOCATIONS ARE TO BE DETERMINED BASED ON FIELD CONDITIONS AS SPECIFIED AND SHOWN ON THE PLANS.
7. PROVIDE EXPANSION AND DEFLECTION CONDUIT FITTINGS OF THE APPROVED TYPE AT THE LOCATIONS WHERE CONDUIT PASSES THROUGH STRUCTURAL EXPANSION JOINTS OTHER CRITICAL LOCATIONS, OR MINIMUM EVERY 300 FEET ON STRAIGHT RUNS.
8. PITCH CONDUIT RUNS TOWARD PULL BOXES TO PREVENT MOISTURE ACCUMULATION. ON LOWEST POINT OF ALL BOXES AND OTHER ELECTRICAL EQUIPMENT SUBJECT TO WATER ACCUMULATION, PROVIDE NECESSARY DRAIN OPENINGS, FITTINGS, CONDUITS, ETC.
9. PERFORM ALL CUTTING, DRILLING AND CORE DRILLING AS NECESSARY TO PROVIDE PENETRATIONS THROUGH WALLS AND FLOORS FOR ELECTRICAL INSTALLATION WORK. CORE DRILL DIAMETER SHALL NOT BE MORE THAN 25 PERCENT LARGER THAN THE CONDUIT OUTSIDE DIAMETER. ALL CONDUITS PENETRATING WALLS AND FLOORS SHALL BE INSTALLED IN A GALVANIZED STEEL SLEEVE WITH FLOOR SUPPORTS. PATCH AND RESTORE SURROUNDING AREA OF PENETRATIONS TO ITS ORIGINAL CONDITION TO THE SATISFACTION OF THE ENGINEER. OPENINGS THROUGH SLAB AND WALL FOR CONDUITS SHALL BE FIRE STOPPED IN AN APPROVED MANNER UTILIZING "3M" COMPANY SEALING SYSTEM #7904 SERIES OR APPROVED EQUAL.
10. 10.
11. CONTRACTOR SHALL NOTIFY IDOT FOR EXISTENCE OF ASBESTOS AFFECTED BY THE INSTALLATION OF ELECTRICAL AND CONTROL SYSTEMS.
12. FURNISH AND INSTALL TAGS FOR CONDUITS AND CABLES TO BE INSTALLED UNDER THIS CONTRACT. TAG IDENTIFICATIONS SHALL BE IN ACCORDANCE WITH THE CONTRACT DRAWINGS, OR AS DIRECTED BY THE ENGINEER.
13. PRIOR TO COMMENCEMENT OF WORK, SUBMIT DETAILED STAGING PLANS TO THE ENGINEER FOR APPROVAL. COORDINATE WITH THE ENGINEER ALL CONSTRUCTION ACTIVITIES THAT MAY AFFECT OPERATIONS.
14. COMPLETE ELECTRICAL INSTALLATION SHALL BE PERMANENTLY AND EFFECTIVELY GROUNDED TO GROUND RODS AND/OR STRUCTURAL STEEL IN ACCORDANCE WITH NATIONAL ELECTRICAL CODE AND AASHTO CODE REQUIREMENTS. WHETHER OR NOT SUCH CONNECTIONS ARE SPECIFICALLY IDENTIFIED, MEASURED RESISTANCE TO GROUND TO BE 5 OHMS MAXIMUM.
15. ALL 600V POWER AND CONTROL CABLE SHALL BE TYPES RHH, RHW, XHHW-2 OR USE. THE CABLE SHALL RATED AT A MINIMUM OF 90°C DRY AND 75°C WET AND SHALL BE SUITABLE FOR INSTALLATION IN WET AND DRY LOCATIONS, AND SHALL BE RESISTANT TO OILS AND CHEMICALS. SHALL CONSIST OF STRANDED COPPER CONDUCTORS INSULATED WITH CHEMICALLY CROSS-LINKED POLYETHYLENE, XLPE.
16. THE CONTRACTOR SHALL PERFORM FULL CONTINUITY, INSULATION AND GROUNDING INTEGRITY TESTS UPON COMPLETION OF THE ELECTRICAL INSTALLATIONS. THE CONTRACTOR SHALL PERFORM FULL ACCEPTANCE TESTS OF ALL INDIVIDUAL NEW CCTV SYSTEM COMPONENTS, THE FULL SYSTEM'S INTEGRATION TO EXISTING IDOT CCTV MONITORING SYSTEM, AND ALL AUXILIARY EQUIPMENT. THE CONTRACTOR SHALL ALSO PERFORM FULL CONTINUITY TEST ON REMAINING SPARE FIBER OPTIC STRANDS IN EACH INSTALLED F.O. CABLE.
17. FOR ADDITIONAL INFORMATION REGARDING EXISTING ROADWAY, BRIDGE, AND OTHER INFRASTRUCTURE AND SYSTEMS, REFER TO BRIDGE'S ROADWAY AND VARIOUS ROOMS CONTRACT - WEST CONGRESS STREET BRIDGE OVER SOUTH BRANCH - CHICAGO RIVER. THE CONTRACTOR SHALL FIELD VERIFY ALL EXISTING INSTALLATIONS, AND SHALL PREPARE CONSTRUCTION DOCUMENTATION BASED ON VERIFIED FIELD MEASUREMENTS AND INSTALLATIONS.
18. ALL POWER EQUIPMENT SHALL BE GROUNDED. COPPER GROUNDING TERMINATION DETAILS, AS INDICATED ON DRAWINGS AND SPECIFICATIONS.
19. SUBMIT DETAIL DRAWINGS OF ALL EQUIPMENT PRIOR TO FABRICATION.
20. ALL EQUIPMENT SHOULD BE ARRANGED TO PERMIT EASY ACCESS FOR OPERATION AND MAINTENANCE.
21. ALL SURFACES DAMAGED IN THE COURSE OF WORK SHALL BE RESTORED TO THE ORIGINAL CONDITION AT NO ADDITIONAL COSTS TO THE OWNER.
22. UPON REMOVAL OF ANY EQUIPMENT, REMOVE ALL SUPPORTS AND HANGERS ASSOCIATED WITH THE EQUIPMENT AND RESTORE THE SURFACE TO MATCH THE SURROUNDING AREAS.
23. REMOVAL OF HAZARDOUS MATERIALS SHALL FOLLOW PROCEDURES APPROVED BY IDOT AND OTHER LOCAL AUTHORITIES HAVING JURISDICTION.
24. ELECTRICAL EQUIPMENT SHALL NOT BE INSTALLED DIRECTLY OVER HEAT PRODUCING EQUIPMENT SUCH AS WALL/SPACE HEATERS AND TRANSFORMERS.
25. ALL SALVACABLE EQUIPMENT SHALL BE RETURNED TO IDOT AT NO ADDITIONAL COST.



10/21/2013

James William Guinan
IL PE 062.053407
Parsons Brinckerhoff
Applicable to
drawing sheets 3 through 10
And 12 through 25

△ Rev. 12-30-13

I:\16843A\CCTV\REFILES from NY89-17-2013\16843A-CCTV-E01-06_NotesGen_0wqjindex.dgn 21-OCT-2013 15:43

PARSONS BRINCKERHOFF
230 West Monroe Street
Suite 1900
Chicago, IL 60606

USER NAME = psteld	DESIGNED - D. DRAKULICH	REVISED -
FILE NAME	DRAWN - E. MALUSEL	REVISED -
PLOT SCALE = NONE	CHECKED - S. STERN	REVISED -
PLOT DATE = 10/18/2013	DATE - 10/18/2013	REVISED -

**STATE OF ILLINOIS
DEPARTMENT OF TRANSPORTATION**

**CCTV SYSTEM, I-90/94 TO CONGRESS PARKWAY
GENERAL ELECTRICAL NOTES**

SCALE: AS SHOWN SHEET NO. OF SHEETS STA. 353+46.00 TO STA. 382+50.00

F.A.P. RTE.	SECTION	COUNTY	TOTAL SHEETS	SHEET NO.
389	2013-026-1	COOK	37	3
CONTRACT NO. 60W49			FED. ROAD DIST. NO. 1 [ILLINOIS] FED. AID PROJECT	

ELECTRICAL NOTES:

B. CONDUIT & FITTINGS

1. USE FACTORY APPLIED POLYURETHANE COATED HOT DIPPED GALVANIZED RIGID CONDUIT AND FITTINGS IN AREAS WHERE CONDUITS ARE EXPOSED TO WATER CONDITIONS, AND FOR ALL OUTDOOR INSTALLATIONS INCLUDING CONTROL AND COMMUNICATION SYSTEMS.
2. ALL CONDUIT SHALL BE RIGID GALVANIZED STEEL UNLESS OTHERWISE NOTED. CONDUITS SHALL NOT BE LESS THAN 3/4" WHERE EXPOSED, AND NOT LESS THAN 1" WHERE CONCEALED, CONCRETE-ENCASED, OR BURIED.
3. ALL CONDUIT CONNECTIONS SHALL BE WATERTIGHT AND ALL CONDUITS ENTERING ENCLOSURES SHALL BE PROVIDED WITH WATERTIGHT HUBS AND CONDUIT SEALING BUSHINGS THROUGHOUT. ALL OPENINGS FOR CONDUIT PENETRATIONS SHALL BE SLEEVED, AND SHALL BE WATERPROOFED AND FIRE PROOFED.
4. INSTALL MOGUL CONDULETS WHERE CONDUIT RUN EXCEEDS 180 FEET BETWEEN CABLE PULLING POINTS. CONDUIT RUNS BETWEEN ANY TWO PULL POINTS SHALL NOT CONTAIN MORE THAN THE EQUIVALENT OF THREE RIGHT ANGLE BENDS. PROVIDE EXPANSION FITTINGS IN CONDUIT RUN WHERE IT CROSSES STRUCTURAL EXPANSION JOINT AND OR EVERY 300 FEET IN ALL EXPOSED CONDUIT RUNS.
5. WHERE STRUCTURAL OPENINGS ARE NOT AVAILABLE, SLEEVES SHALL BE INSTALLED AS REQUIRED TO PERMIT PASSAGE OF CONDUITS. AFTER INSTALLATION, ALL OPENINGS SHALL BE FILLED WITH 2 HOUR FIRE RATED COMPOUND AND WATERPROOFED TO MATCH THE SURROUNDING AREAS.
6. EXPOSED CONDUIT SUPPORTS MINIMUM SPACING, CENTER TO CENTER, SHALL BE NOT MORE THAN:
-- 7 1/2 FEET ON CONCRETE OR MASONRY, AS PERMITTED BY NEC FOR THE CONDUIT SIZE
-- 5 FEET ON STEEL STRUCTURES
7. WHEREVER A CONDUIT RUN MEETS AN OBSTRUCTION (DRAIN PIPE, VERTICAL PIPE, DRIP PAN, ETC.) CONDUIT SHALL BE OFFSET AS REQUIRED.
8. ALL SPARE DUCTS AND CONDUITS SHALL BE SEALED WITH HEAVY DUCT CAPS.
9. CHASE WALLS AND FLOORS AS REQUIRED AND APPROVED AND PATCH ALL OPENINGS, FLOOR CHASING OR HOLES WHICH HAVE BEEN CAUSED BY THE INSTALLATION AND REMOVAL OF THE EQUIPMENT.
10. THE NUMBER AND SIZES OF CONDUITS, BOXES, CABINETS, WIRES AND CABLES SHOWN ON THE CONTRACT PLANS SCHEMATIC LAYOUT DIAGRAMS AND SCHEDULES ARE THE MINIMUM PERMISSIBLE FOR THE POWER AND CONTROL CIRCUITS OF THE SYSTEMS SHOWN ON THESE CONTRACT PLANS. THE CONTRACTOR SHALL PROVIDE CONDUITS, CONDUCTORS AND CABLES OF SUFFICIENT NUMBER AND SIZE, INCLUDING SPARES, AS MAY BE REQUIRED FOR THE INSTALLATION IN ACCORDANCE WITH THE FINAL WIRING DIAGRAMS ON THE APPROVED WORKING DRAWINGS, AND IN COMPLIANCE WITH NEC AND ALL OTHER APPLICABLE CODES.
11. THE CONTRACTOR SHALL NUMBER AND TAG SPARE CONDUCTORS AS SUCH, AND SPARE CONDUCTORS SHALL BE SHOWN ON ALL SHOP AND RECORD DRAWINGS. THE SCHEMATIC CONDUIT DIAGRAMS ON THE CONTRACT PLANS AND ALL ASSOCIATED TABLES, SCHEDULES AND DETAILS DO NOT PURPORT TO SHOW ALL PULL AND TERMINAL BOXES, JUNCTION BOXES, MOUNTING HARDWARE AND SUPPORTS ASSOCIATED WITH THE COMPLETE AND FINAL INSTALLATION OF ALL ELECTRICAL SYSTEMS. THE CONTRACTOR SHALL FURNISH AND INSTALL ANY ADDITIONAL BOXES, SUPPORTS AND OTHER HARDWARE REQUIRED TO CONFORM TO THESE ITEMS' CONSTRUCTION AND INSTALLATION SPECIFICATIONS, IN COMPLIANCE WITH ALL APPLICABLE CODES AND NYCT DESIGN GUIDELINES.
12. FLEXIBLE CONDUIT SECTIONS, HARDWARE AND SUPPORTS REQUIRED FOR CONNECTIONS TO CCTV EQUIPMENT ARE NOT INDICATED ON THE CONTRACT PLANS.
13. THE SCHEMATIC CONDUIT DIAGRAMS DO NOT PURPORT TO SHOW THE EXACT PHYSICAL LAYOUT AND LOCATIONS OF THE EQUIPMENT OR OF THE ASSOCIATED CONDUIT, WIRING, BOXES AND OTHER HARDWARE, AND SHOULD NOT BE USED FOR SUCH PURPOSES AS SUBSTITUTES FOR WORKING OR INSTALLATION DRAWINGS. THE CONTRACTOR SHALL SUBMIT SUCH COMPLETE CONDUIT PHYSICAL LAYOUT DRAWINGS AS PART OF THE SHOP DRAWING SUBMITTAL PROCESS FOR THE ENGINEER'S APPROVAL PRIOR TO PERFORMING THE ACTUAL WORK. THE CONTRACTOR IS SOLELY RESPONSIBLE TO PRODUCE AND SUBMIT FOR THE ENGINEER'S APPROVAL SUCH DRAWINGS AS SPECIFIED HEREIN AND UNDER OTHER RELATED NOTES AND SPECIFICATION SECTIONS.
14. FITTINGS, MOUNTING SUPPORTS, BRACKETS, ETC. ARE NOT SHOWN ON THE CONDUIT AND WIRING SCHEMATIC DIAGRAMS.

15. CONTRACTOR SHALL INSURE DURING ALL PHASES OF F.O. HANDLING AND INSTALLATION THAT THE BENDING RADIUS OF THE CABLE WILL BE GREATER THAN 20 TIMES THE CABLE DIAMETER.

C. ELECTRIC POWER

1. ALL SPARE DUCTS SHALL BE SEALED WITH HEAVY DUCT CAPS AT BOTH ENDS.
2. A FRAMEWORK OF KINDORF CHANNEL OR APPROVED EQUAL SHALL BE INSTALLED TO SUPPORT ENCLOSURES. KINDORF CHANNELS MOUNTED VERTICALLY ON THE WALL SHALL HAVE 3/4" SPACERS.
3. ALL REQUIRED CONDUIT, WIRE, CABLE, FITTINGS, BOXES, HARDWARE ETC. SHALL BE FURNISHED AND INSTALLED IN ORDER TO MAKE A COMPLETE ELECTRICAL SYSTEM READY FOR OPERATION. NO SPLICING OF WIRE AND CABLE IS ACCEPTABLE UNLESS OTHERWISE INDICATED ON THE CONTRACT DRAWINGS.

D. ELECTRICAL DEMOLITION

1. REMOVE AND/OR RELOCATE ALL EXISTING ELECTRICAL WORK WHICH INTERFERES WITH THE ELECTRICAL LAYOUTS AND SCHEMES IN FULL COORDINATION WITH ALL OTHER DEMOLITION WORK. ALL EQUIPMENT WHICH IS NO LONGER REQUIRED SHALL BE DE-ENERGIZED AND DISCONNECTED AT THE SOURCE OF POWER SUPPLY, AND REMOVED. WHEN REMOVING EMPTY CONDUITS, PATCH SURFACES BEHIND THEM ON THE WALLS, CEILINGS AND OTHER STRUCTURAL ELEMENTS THAT ARE TO REMAIN.
2. MAINTAIN SERVICE TO EXISTING EQUIPMENT THAT IS OPERATIONAL. PROVIDE COVERING AND PATCHING OF ALL OPENINGS CREATED BY ELECTRICAL EQUIPMENT REMOVALS, ON ALL WALLS, CEILINGS AND OTHER STRUCTURES TO REMAIN. THE REMAINING ELECTRICAL EQUIPMENT SHALL BE RECONNECTED AND RESTORED TO THEIR CURRENT FUNCTIONS AS PART OF THE ELECTRICAL SYSTEMS WORK.
3. NOTIFY IDOT AND THE FACILITY GENERAL MANAGER THRU THE ENGINEER AT THE APPROPRIATE TIME AND FOLLOWING THE APPROPRIATE PROCEDURES FOR THE PROJECTED DEMOLITION. EQUIPMENT PROTECTION AND CONSTRUCTION PHASING SHALL BE CARRIED OUT IN ACCORDANCE WITH THE CONTRACT REQUIREMENTS AND AS AGREED WITH THE IDOT AND OTHER LOCAL AUTHORITIES. FOLLOW THE APPROVED DEMOLITION AND PHASING SCHEDULE AND PROCEED IN THE SPECIFIED SEQUENCE AS APPLICABLE TO ANY POWER SHUTDOWN.
4. CONTRACTOR SHALL SUBMIT ALL MATERIAL REMOVALS FOR REVIEW AND APPROVAL 30 DAYS PRIOR TO ANY DEMOLITION WORK. AT NO TIME THE CONTRACTOR SHALL PERFORM ANY DEMOLITION WORK, RELOCATION, REPAIR OR REROUTING OF EXISTING CABLES, CONDUITS, RACEWAYS, JUNCTION BOXES OR EQUIPMENT IN AN AREA WITHOUT THE ENGINEER'S APPROVAL FOR THE AREA AS CLEAR OF ANY HAZARDOUS MATERIALS.

T:\B18031\ARCCCTV\Files from NY09-17-2013\16843A-CCTV-E02-07_NotesEle.dgn 19-DEC-2013 18:15

PARSONS BRINCKERHOFF
230 West Monroe Street
Suite 500
Chicago, IL 60606

USER NAME: potold	DESIGNED: D. DRAKULICH	REVISED: 12/20/2013 D.C.P.
FILE NAME	DRAWN: E. MALUSEL	REVISED:
PLT SCALE: NONE	CHECKED: S. STERN	REVISED:
PLT DATE: 10/16/2013	DATE: 10/18/2013	REVISED:

**STATE OF ILLINOIS
DEPARTMENT OF TRANSPORTATION**

**CCTV SYSTEM, I-90/4 TO CONGRESS PARKWAY
ELECTRICAL NOTES**

F.A.P. RTE.	SECTION	COUNTY	TOTAL SHEETS	SHEET NO.
389	2013-026-1	COOK	37	4
FED. ROAD DIST. NO. 1 ILLINOIS FED. AID PROJECT			CONTRACT NO. 60W49	

SCALE: AS SHOWN SHEET NO. OF SHEETS STA. 353+46.00 TO STA. 382+50.00

PROJECT: FAP 389 - CCTV SYSTEM - I-90/94 TO CONGRESS PARKWAY - CONTRACT NO. 60W49 COOK COUNTY

CODE NO.	ITEM	UNIT	TOTAL QUANTITY	CONSTR. TYPE CODE ELECTRICAL 90% FED 10% STATE 0021
67100100	MOBILIZATION	L SUM	1	1
70106800	CHANGEABLE MESSAGE SIGN	CAL MO	0.5	0.5
81028200	UNDERGROUND CONDUIT, GALVANIZED STEEL, 2" DIA.	FOOT	38	38
81028220	UNDERGROUND CONDUIT, GALVANIZED STEEL, 3" DIA.	FOOT	102	102
81028370	UNDERGROUND CONDUIT, PVC, 3" DIA.	FOOT	560	560
81100300	CONDUIT ATTACHED TO STRUCTURE, 1" DIA., GALVANIZED STEEL	FOOT	120	120
81100320	CONDUIT ATTACHED TO STRUCTURE, 1" DIA., PVC COATED GALVANIZED STEEL	FOOT	130	130
81100400	CONDUIT ATTACHED TO STRUCTURE, 1 1/4" DIA., GALVANIZED STEEL	FOOT	110	110
81100420	CONDUIT ATTACHED TO STRUCTURE, 1 1/4" DIA., PVC COATED GALVANIZED STEEL	FOOT	40	40
81100510	CONDUIT ATTACHED TO STRUCTURE, 1 1/2" DIA., PVC COATED GALVANIZED STEEL	FOOT	80	80
81100600	CONDUIT ATTACHED TO STRUCTURE, 2" DIA., GALVANIZED STEEL	FOOT	10	10
81100605	CONDUIT ATTACHED TO STRUCTURE, 2" DIA., PVC COATED GALVANIZED STEEL	FOOT	700	700
81100805	CONDUIT ATTACHED TO STRUCTURE, 3" DIA., PVC COATED GALVANIZED STEEL	FOOT	40	40
81300550	JUNCTION BOX, STAINLESS STEEL, ATTACHED TO STRUCTURE, 12" X 12" X 6"	EACH	3	3
81300960	JUNCTION BOX, STAINLESS STEEL, ATTACHED TO STRUCTURE, 42" X 36" X 12"	EACH	4	4
81702441	ELECTRIC CABLE IN CONDUIT, 600V (XLP-TYPE USE) 2-12/C, 1-12/C GROUND	FOOT	130	130
87000885	ELECTRIC CABLE ASSEMBLY IN CONDUIT, 600V (XLP-TYPE TC) 2/C NO. 6 AND NO. 8	FOOT	1455	1455
87900200	DRILL EXISTING HANDHOLE	EACH	3	3

T:\68438\CCTV9\CADD\60W49-sht_03-soq.dgn
01-NOV-2013 14:23

PARSONS BRINCKERHOFF
230 West Monroe Street
Suite 900
Chicago, IL 60606

USER NAME - potold	DESIGNED - SN	REVISED -
FILE NAME	DRAWN - DCP	REVISED -
PLOT SCALE - NONE	CHECKED - SN	REVISED -
PLOT DATE - 11/17/2013	DATE - 10/18/2013	REVISED -

DESIGNED - SN	REVISED -
DRAWN - DCP	REVISED -
CHECKED - SN	REVISED -
DATE - 10/18/2013	REVISED -

STATE OF ILLINOIS
DEPARTMENT OF TRANSPORTATION

CCTV SYSTEM, I-90/94 TO CONGRESS PARKWAY
SUMMARY OF QUANTITIES

SCALE: NONE SHEET NO. OF SHEETS STA. 353+46.00 TO STA. 382+50.00

F.A.P. RTE. 389	SECTION 2013-026-1	COUNTY COOK	TOTAL SHEETS 37	SHEET NO. 6
CONTRACT NO. 60W49				
FED. ROAD DIST. NO. 1 (ILLINOIS) FED. AID PROJECT				

Rev. 12-30-13

PROJECT: FAP 389 - CCTV SYSTEM - I-90/94 TO CONGRESS PARKWAY - CONTRACT NO. 60W49 COOK COUNTY

CODE NO.	ITEM	UNIT	TOTAL QUANTITY	CONSTR. TYPE CODE ELECTRICAL 90% FED 10% STATE 0021
X0323898	CLOSED CIRCUIT TELEVISION DOME CAMERA	EACH	10	10
X0323914	FIBER OPTIC CABLE SPLICE - LATERAL	EACH	3	3
X0324597	CLOSED CIRCUIT TELEVISION CABINET	EACH	5	5
X0326945	CLOSED CIRCUIT TELEVISION CAMERA EQUIPMENT	EACH	10	10
X0326946	CLOSED CIRCUIT TELEVISION CAMERA INSTALLATION	EACH	6	6
X0327561	BUDGETARY ALLOWANCE FOR CCTV INTEGRATION	L SUM	1	1
* X0327607	FIBER OPTIC SPLICE - MAINLINE	EACH	1	1
X0783300	PUMP STATION ELECTRICAL WORK	L SUM	1	1
X7011015	TRAFFIC CONTROL AND PROTECTION (EXPRESSWAYS)	L SUM	1	1
X8710012	FIBER OPTIC CABLE IN CONDUIT (INSTALL ONLY)	FOOT	1154	1154
X8710036	FIBER OPTIC CABLE 12 FIBERS, SINGLE MODE	FOOT	875	875
□ Z0010614	CLEANING EXISTING MANHOLE OR HANDHOLE	EACH	2	2
Z0013798	CONSTRUCTION LAYOUT	L SUM	1	1
Z0030850	TEMPORARY INFORMATION SIGNING	SQ FT	24	24
△ X0327697	REMOVE AND REINSTALL EXISTING WIRING IN SUBMARINE TUBE	FOOT	700	700
X8710047	FIBER OPTIC CABLE AERIAL SELF-SUPPORTING 24 FIBERS, SINGLE MODE	FOOT	1782	1782
X0327683	CLOSED CIRCUIT TELEVISION CAMERA STRUCTURE, GALVANIZED STEEL, 100 FT. MOUNTING HEIGHT	EACH	2	2
△ X0327696	BUDGETARY ALLOWANCE FOR TIME-LAPSE CAMERA	L SUM	1	1

- 15
- SPECIALTY ITEM
- NP - 100% STATE

T:\818843\9\CCTV\CADD\60W49-shr-030-sq.dgn
01-NOV-2013 14:23

PARSONS BRINCKERHOFF
230 West Monroe Street
Suite 900
Chicago, IL 60606

USER NAME: f.potold	DESIGNED - SN	REVISED -
FILE NAME:	DRAWN - DCP	REVISED -
PLOT SCALE: NONE	CHECKED - SN	REVISED -
PLOT DATE: 11/1/2013	DATE - 10/18/2013	REVISED -

STATE OF ILLINOIS
DEPARTMENT OF TRANSPORTATION

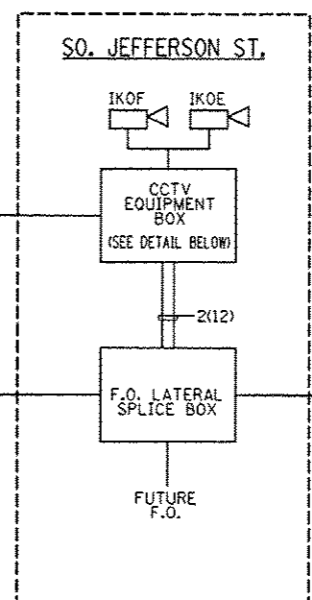
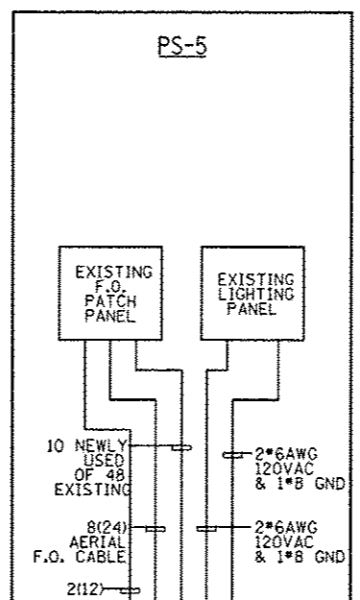
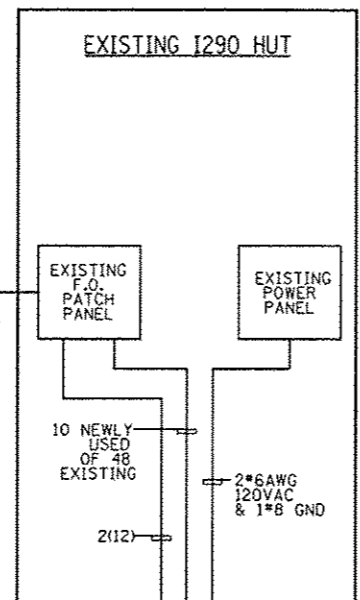
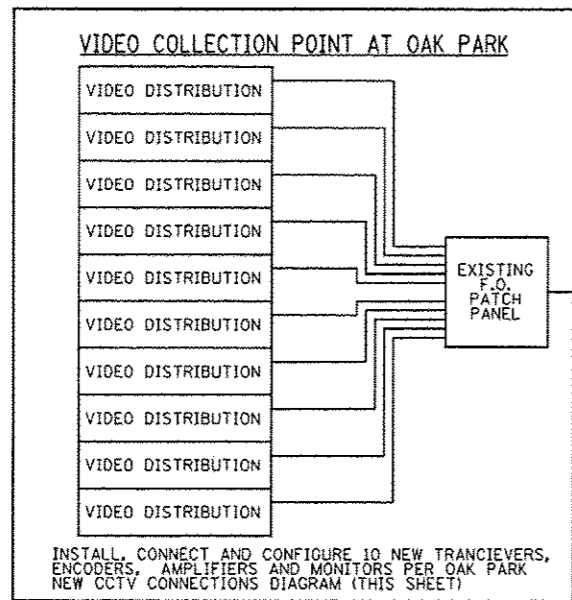
CCTV SYSTEM, I-90/94 TO CONGRESS PARKWAY
SUMMARY OF QUANTITIES

SCALE: NONE SHEET NO. OF SHEETS STA. 353+46.00 TO STA. 382+50.00

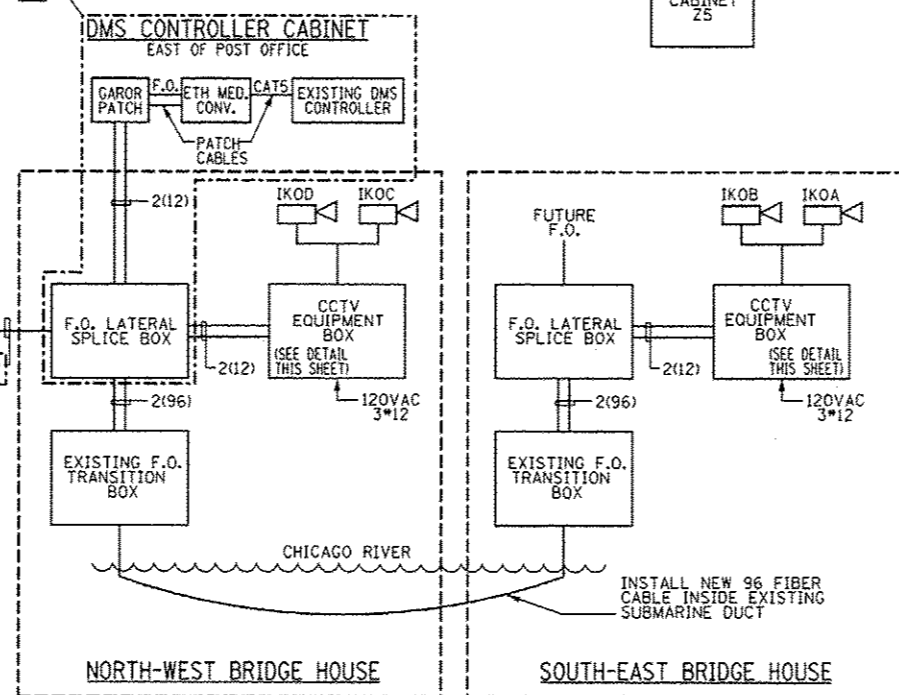
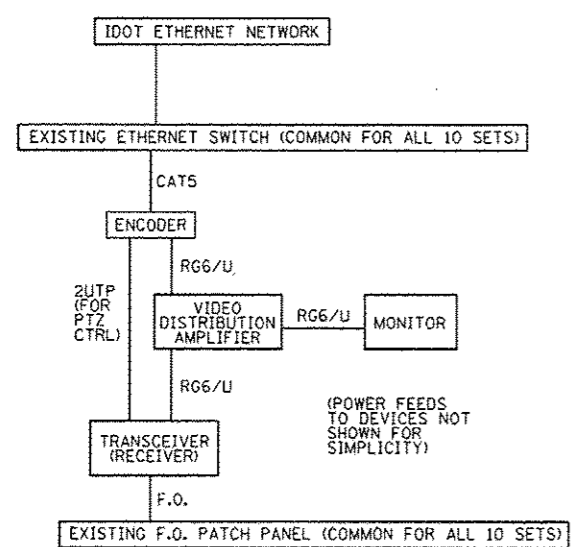
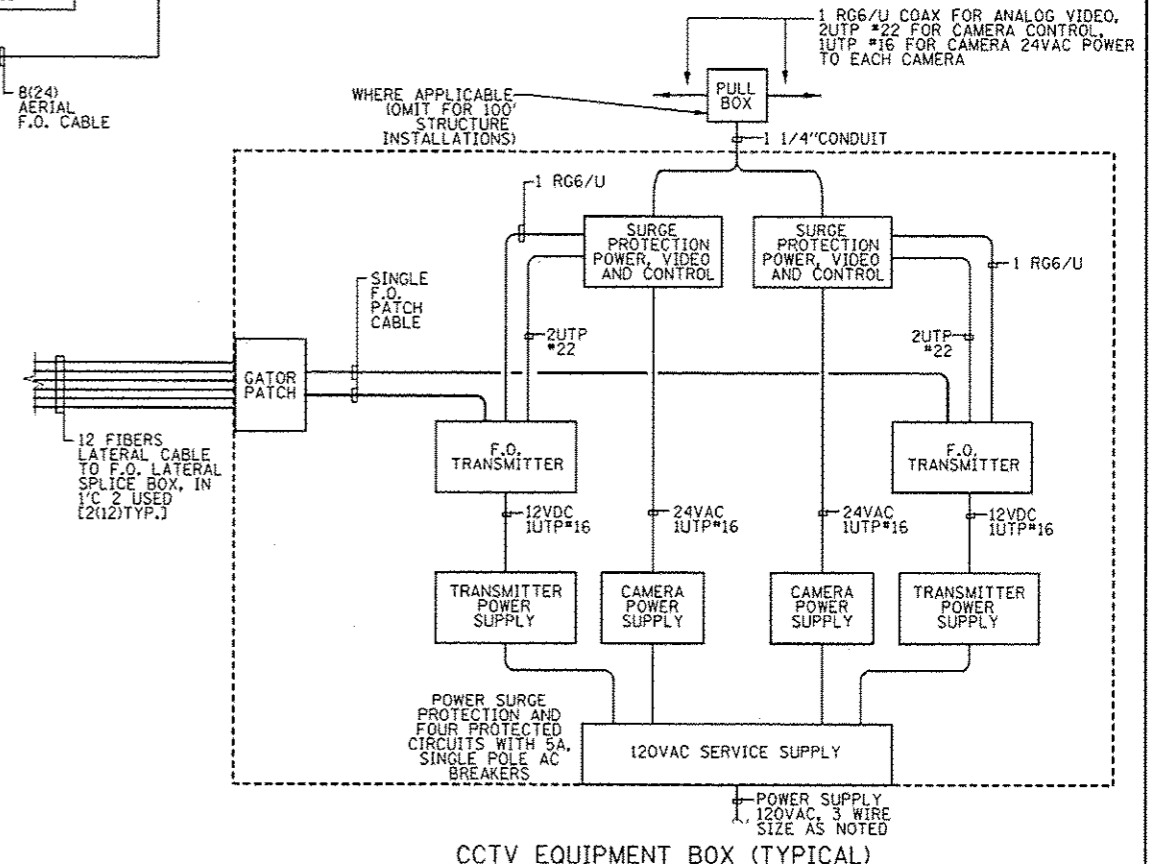
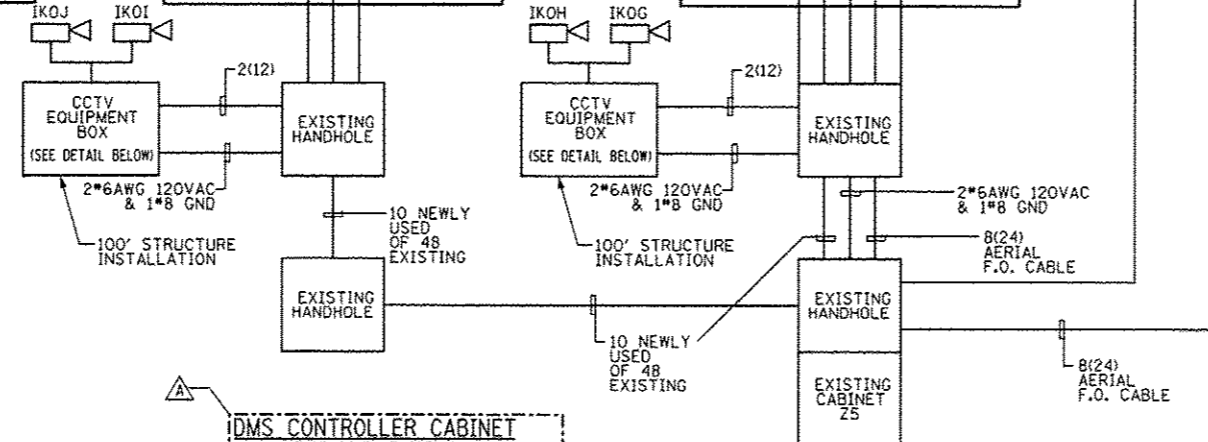
△ Rev. 12-30-13

Rev.

F.A.P. RATE 389	SECTION 2013-026-1	COUNTY COOK	TOTAL SHEETS 37	SHEET NO. 6a
CONTRACT NO. 60W49				
FED. ROAD DIST. NO. 1 ILLINOIS FED. AID PROJECT				



- NOTES:
- SEE FIBER ASSIGNMENT TABLES (DWGS. 23, 24, 25, 27, 28 AND 29 FOR FIBER OPTIC CABLE WIRE ASSIGNMENTS.
 - ALL EQUIPMENT IS NEW TO BE FURNISHED AND INSTALLED UNLESS OTHERWISE NOTED



T:\16843A\CCTV\Files from NY89-17-2013\16843A-CCTV-E05-10_SysBkDlogKey.dgn 19-DEC-2013 18:15

PARSONS BRINCKERHOFF
 270 West Monroe Street
 Suite 200
 Chicago, IL 60606

USER NAME: pataid	DESIGNED: D. DRAKULICH	REVISED: 12/20/2013 D.C.P.
FILE NAME:	DRAWN: E. MALUSEL	REVISED:
PLOT SCALE: NONE	CHECKED: S. STERN	REVISED:
PLOT DATE: 10/16/2013	DATE: 10/16/2013	REVISED:

STATE OF ILLINOIS
 DEPARTMENT OF TRANSPORTATION

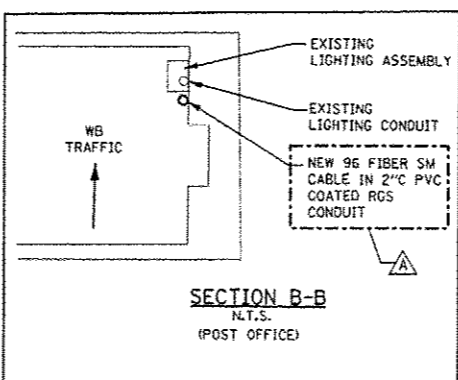
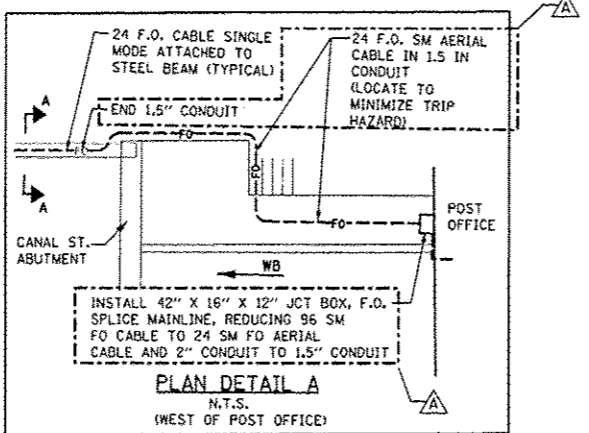
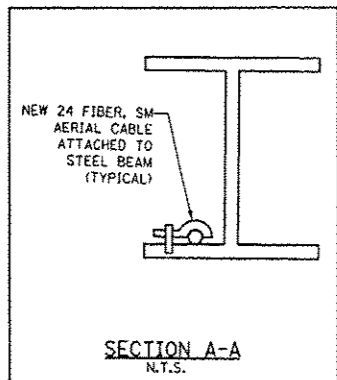
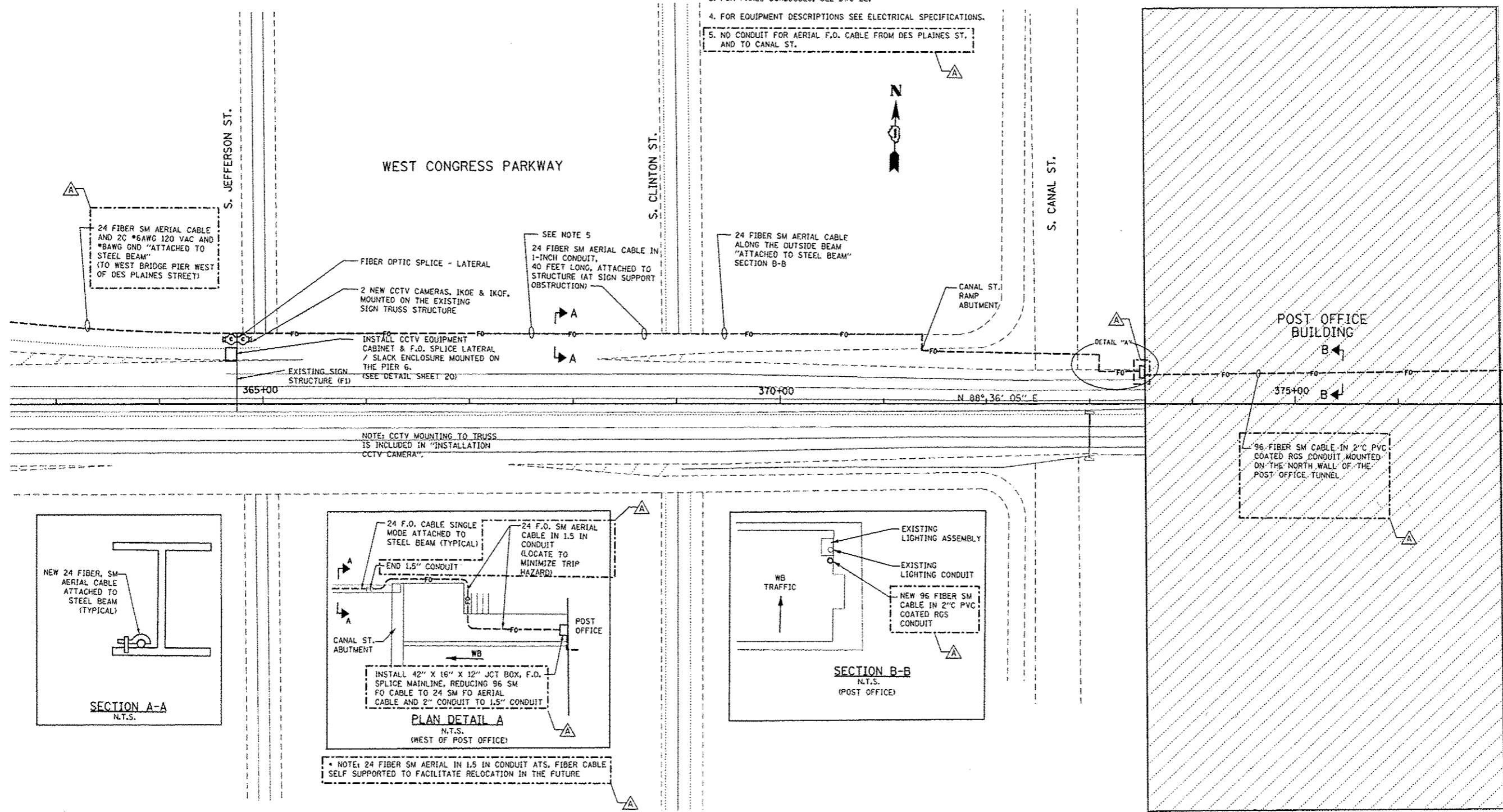
CCTV SYSTEM, I-90/94 TO CONGRESS PARKWAY
 CCTV SYSTEM BLOCK DIAGRAM

SCALE: AS SHOWN SHEET NO. OF SHEETS STA. 353+46.00 TO STA. 382+50.00

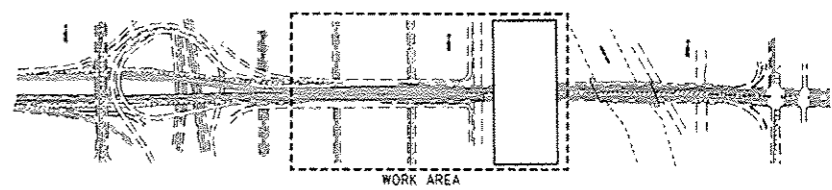
F.A.P. RTE. 389	SECTION 2013-026-I	COUNTY COOK	TOTAL SHEETS 37	SHEET NO. 10
CONTRACT NO. 60W49				FED. ROAD DIST. NO. 1 ILLINOIS FED. AID PROJECT

NOTES:

1. FOR GENERAL AND ELECTRICAL NOTES, SEE DWG'S 2, 3 & 4.
2. FOR ELECTRICAL SYMBOLS AND ABBREVIATIONS, SEE DWG. 5
3. FOR PANEL SCHEDULES, SEE DWG 22.
4. FOR EQUIPMENT DESCRIPTIONS SEE ELECTRICAL SPECIFICATIONS.
5. NO CONDUIT FOR AERIAL F.O. CABLE FROM DES PLAINES ST. AND TO CANAL ST.



NOTE: 24 FIBER SM AERIAL IN 1.5 IN CONDUIT AT S, FIBER CABLE SELF SUPPORTED TO FACILITATE RELOCATION IN THE FUTURE



T:\01684348\CCTV\Files from NY09-17-2013\01684348-CCTV-E07-12-FO-Plan-2013-Rev10-17-2013.dgn 19-DEC-2013 18:15

PARSONS BRINCKERHOFF
230 West Monroe Street
Chicago, IL 60606

USER NAME: ppatold	DESIGNED: D. DRAKULICH	REVISED: 12/20/2013 D.C.P.
FILE NAME:	DRAWN: E. MALUSEL	REVISED:
PLOT SCALE: NONE	CHECKED: S. STERN	REVISED:
PLOT DATE: 10/16/2013	DATE: 10/16/2013	REVISED:

**STATE OF ILLINOIS
DEPARTMENT OF TRANSPORTATION**

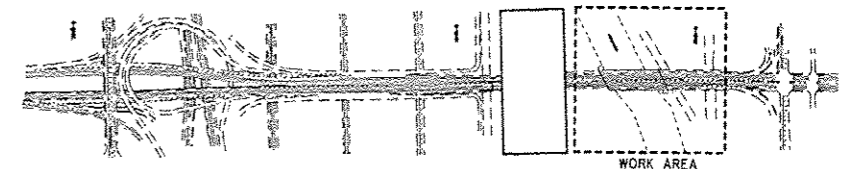
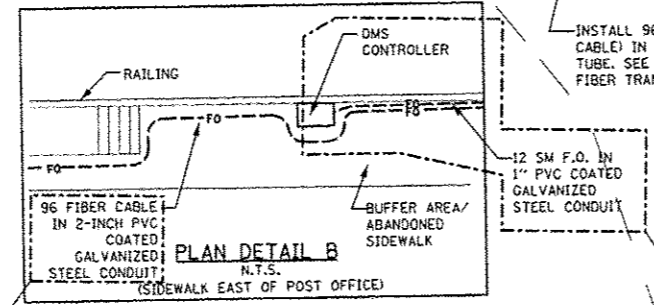
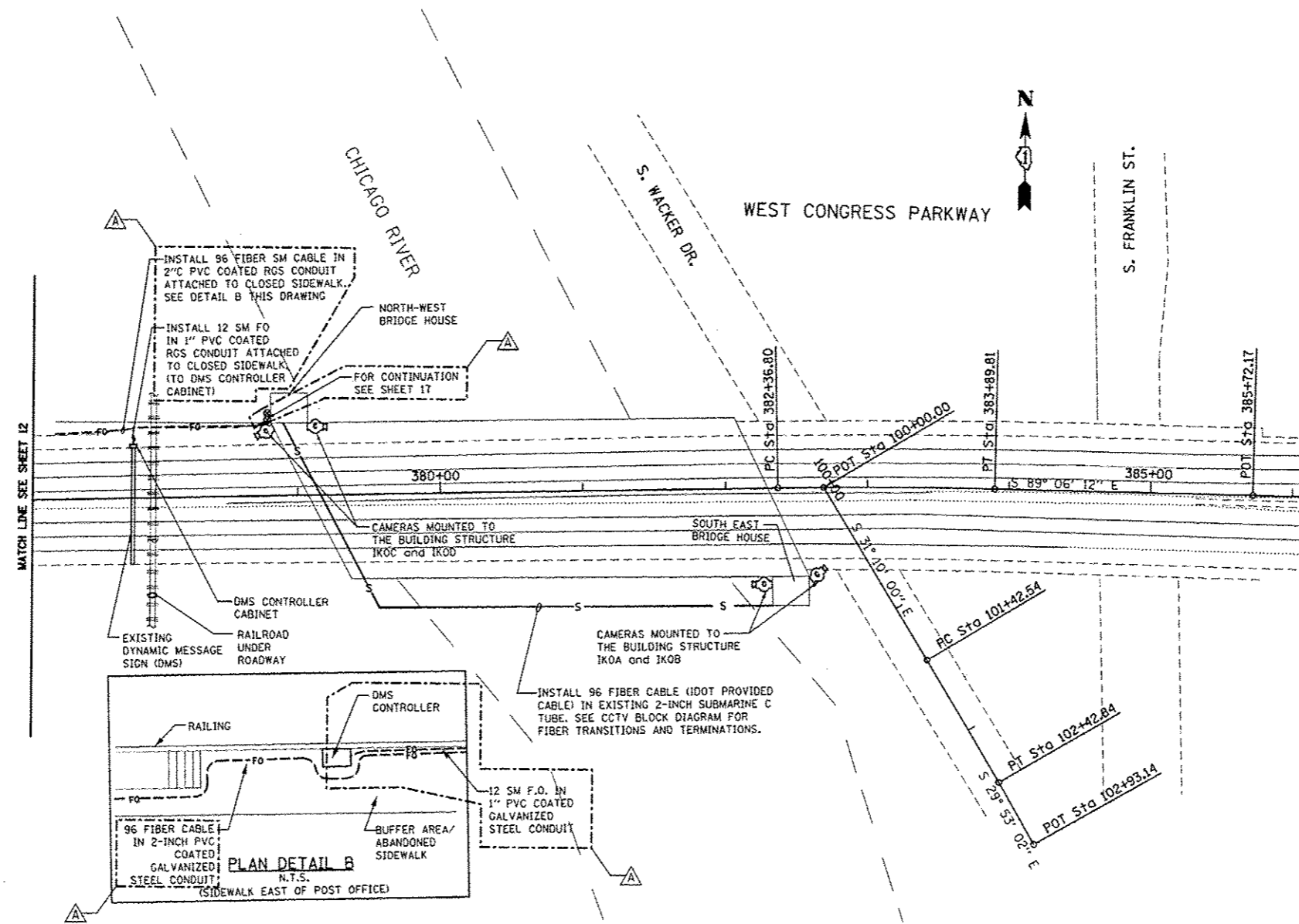
**CCTV SYSTEM, I-90/94 TO CONGRESS PARKWAY
CCTV FIBER OPTIC PLAN SHEET 1 OF 2**

SCALE: AS SHOWN SHEET NO. OF SHEETS STA. 353+46.00 TO STA. 382+50.00

F.A.P. RTE. 389	SECTION 2013-026-1	COUNTY COOK	TOTAL SHEETS 37	SHEET NO. 12
FED. ROAD DIST. NO. 1 ILLINOIS FED. AID PROJECT			CONTRACT NO. 60W49	

NOTES:

1. FOR GENERAL AND ELECTRICAL NOTES, SEE DWG'S 2, 3 & 4.
2. FOR ELECTRICAL SYMBOLS AND ABBREVIATIONS, SEE DWG. 5
3. FOR PANEL SCHEDULES, SEE DWG 22.
4. FOR EQUIPMENT DESCRIPTIONS SEE ELECTRICAL SPECIFICATIONS.
5. INSTALL NEW MINI F.O. PATCH PANEL AND F.O. TO RJ45 ETHERNET MEDIA ADAPTER IN EXISTING DMS CONTROLLER CABINET. CONNECT 4 STRANDS OF 12-STRAND LATERAL CABLE TO THE F.O. PATCH PANEL PORTS. POWER ETHERNET MEDIA CONVERTER WITH LOCAL 120VAC. INSTALL ETHERNET F.O. AND CAT5 PATCH CABLES TO ESTABLISH ETHERNET LINK BETWEEN DMS CONTROLLER AND F.O. BACKBONE. PROVIDE SECOND ETHERNET MEDIA CONVERTER TO IDOT AS LOOSE ITEM.
6. CONTRACTOR SHALL VERIFY PHYSICAL SPACE AND 120VAC POWER AVAILABILITY IN DMS CABINET FOR INSTALLATION OF MINI F.O. PATCH PANEL AND ETHERNET MEDIA CONVERTER AND SHALL PROVIDE SHOP DRAWINGS FOR ENGINEER'S APPROVAL.



T:\816843\BCTV\BFiles from NY\89-17-2013\816843A-CCTV-E08-13_FO-Plan-3of3_rev10-17-2013.dgn 20-DEC-2013 08:18

PARSONS BRINCKERHOFF
210 West Madison Street
Suite 500
Chicago, IL 60606

USER NAME: pataid	DESIGNED: D. DRAKULICH	REVISED: 12/20/2013 D.C.P.
FILE NAME:	DRAWN: E. MALUSEL	REVISED:
PLT SCALE: NONE	CHECKED: S. STERN	REVISED:
PLT DATE: 10/16/2013	DATE: 10/16/2013	REVISED:

STATE OF ILLINOIS
DEPARTMENT OF TRANSPORTATION

CCTV SYSTEM, I-90/94 TO CONGRESS PARKWAY
CCTV FIBER OPTIC PLAN SHEET 2 OF 2

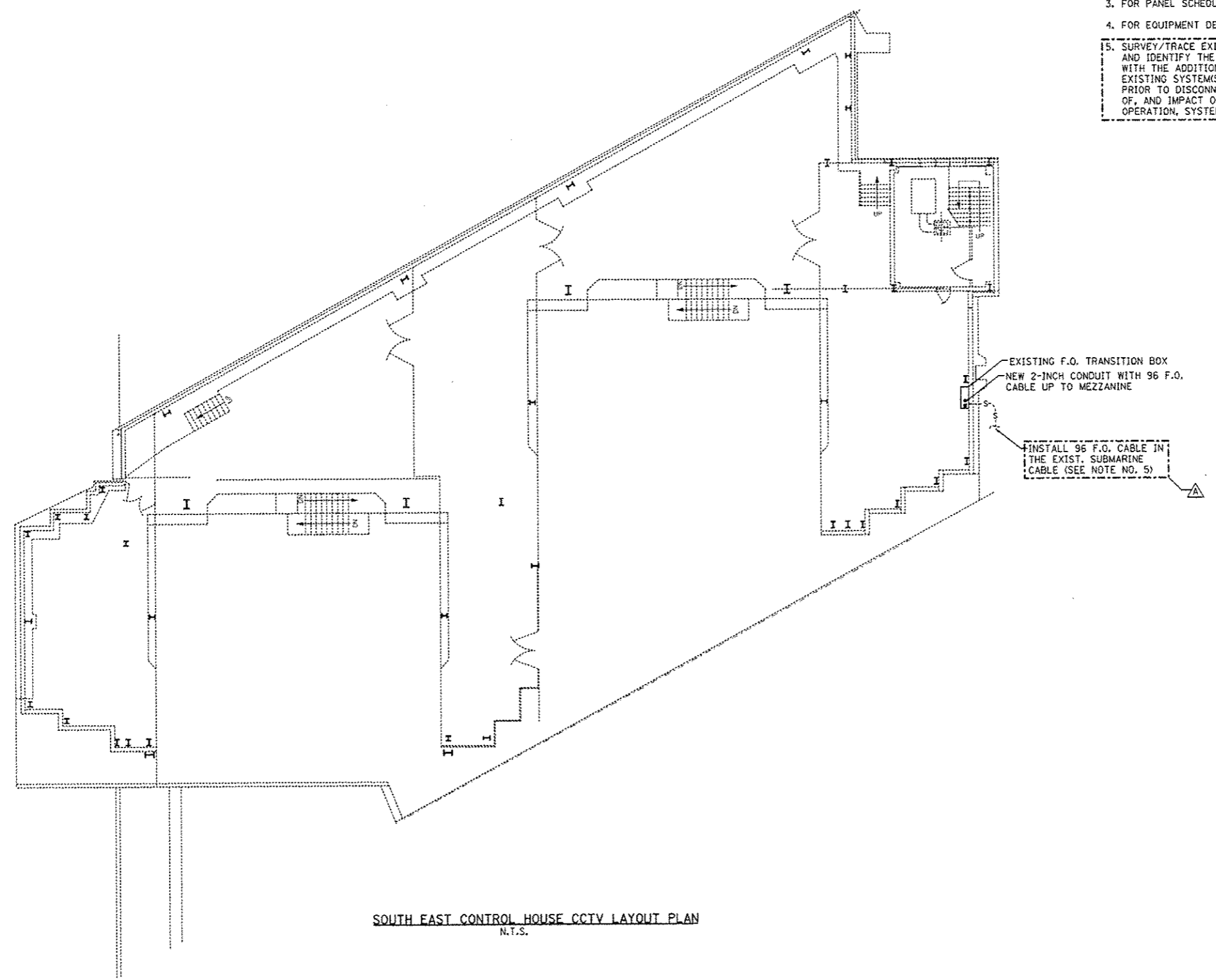
SCALE: AS SHOWN SHEET NO. OF SHEETS STA. 353+46.00 TO STA. 382+50.00

F.A.P. RTE.	SECTION	COUNTY	TOTAL SHEETS	SHEET NO.
389	2013-026-1	COOK	37	13
CONTRACT NO. 60W49				

FED. ROAD DIST. NO. 1 | ILLINOIS FED. AID PROJECT



- NOTES:**
1. FOR GENERAL AND ELECTRICAL NOTES, SEE DWG'S 2, 3 & 4.
 2. FOR ELECTRICAL SYMBOLS AND ABBREVIATIONS, SEE DWG. 5
 3. FOR PANEL SCHEDULES, SEE DWG 22.
 4. FOR EQUIPMENT DESCRIPTIONS SEE ELECTRICAL SPECIFICATIONS.
 5. SURVEY/TRACE EXISTING CIRCUITS IN THE SUBMARINE CABLE TUBE AND IDENTIFY THE SYSTEM(S) AFFECTED. REINSTALL AS REQUIRED WITH THE ADDITIONAL 96 STRAND FO CABLE, RETEST AND VERIFY EXISTING SYSTEM(S) FUNCTIONALITY UPON COMPLETION OF THE WORK. PRIOR TO DISCONNECTING EXISTING CIRCUITS, DOCUMENT THE FUNCTIONALITY OF, AND IMPACT ON EXISTING SYSTEM(S) AND POTENTIAL ISSUES, E.G. BRIDGE OPERATION, SYSTEM(S) RE-CERTIFICATION. COORDINATE WITH ENGINEER.



SOUTH EAST CONTROL HOUSE CCTV LAYOUT PLAN
N.T.S.

T:\16843A\CCTV\Files From NY\89-17-2013\16843A-CCTV-E09-14_Est-DockLV-REV.10-16-2013.dgn
19-DEC-2013 18:15

PARSONS BRINCKERHOFF
230 West Monroe Street
Suite 200
Chicago, IL 60606

USER NAME: *psahid	DESIGNED - D. DRAKULICH	REVISED - 12/20/2013 D.C.P.
FILE NAME:	DRAWN - E. MALUSEL	REVISED -
PLOT SCALE: # NONE	CHECKED - S. STERN	REVISED -
PLOT DATE: 12/18/2013	DATE - 10/18/2013	REVISED -

STATE OF ILLINOIS
DEPARTMENT OF TRANSPORTATION

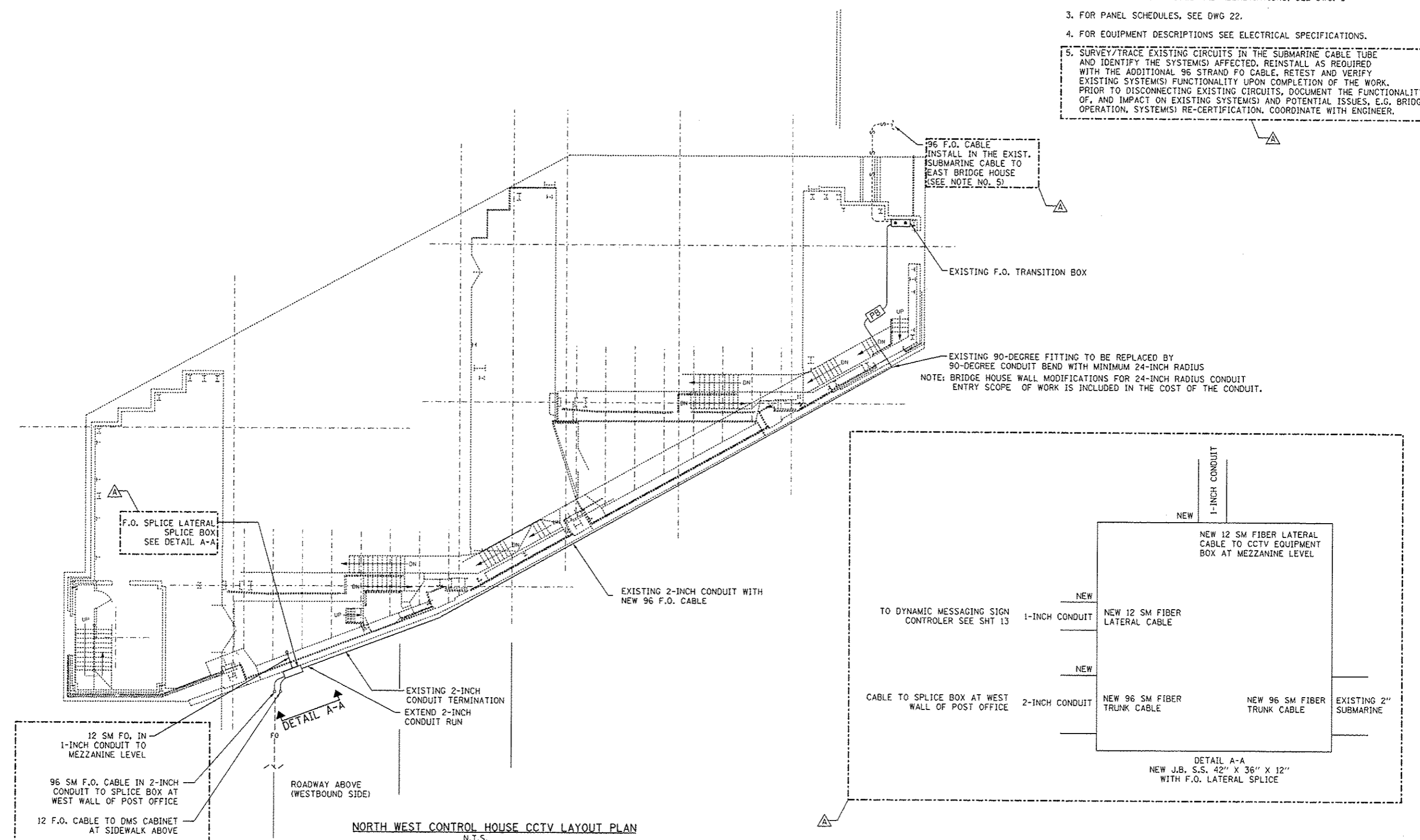
CCTV SYSTEM, I-9094 TO CONGRESS PARKWAY
EAST SIDE DOCK LEVEL

SCALE: AS SHOWN	SHEET NO. OF SHEETS	STA. 353+46.00 TO STA. 382+50.00
-----------------	---------------------	----------------------------------

F.A.P. RTE. 389	SECTION 2013-026-1	COUNTY COOK	TOTAL SHEETS 37	SHEET NO. 14
CONTRACT NO. 60W49				
FED. ROAD DIST. NO. 1 ILLINOIS FED. AID PROJECT				



- NOTES:**
1. FOR GENERAL AND ELECTRICAL NOTES, SEE DWG'S 2, 3 & 4.
 2. FOR ELECTRICAL SYMBOLS AND ABBREVIATIONS, SEE DWG. 5
 3. FOR PANEL SCHEDULES, SEE DWG 22.
 4. FOR EQUIPMENT DESCRIPTIONS SEE ELECTRICAL SPECIFICATIONS.
 5. SURVEY/TRACE EXISTING CIRCUITS IN THE SUBMARINE CABLE TUBE AND IDENTIFY THE SYSTEM(S) AFFECTED. REINSTALL AS REQUIRED WITH THE ADDITIONAL 96 STRAND FO CABLE. RETEST AND VERIFY EXISTING SYSTEM(S) FUNCTIONALITY UPON COMPLETION OF THE WORK. PRIOR TO DISCONNECTING EXISTING CIRCUITS, DOCUMENT THE FUNCTIONALITY OF, AND IMPACT ON EXISTING SYSTEM(S) AND POTENTIAL ISSUES, E.G. BRIDGE OPERATION, SYSTEM(S) RE-CERTIFICATION. COORDINATE WITH ENGINEER.



T:\1616843\ARC\CCTV\Files from NY89-17-2013\1616843A-CCTV-E12-17-Wst-DockLv_rev10-17-2013.dgn
19-DEC-2013 18:15

PARSONS BRINCKERHOFF
230 West Monroe Street
Suite 900
Chicago, IL 60606

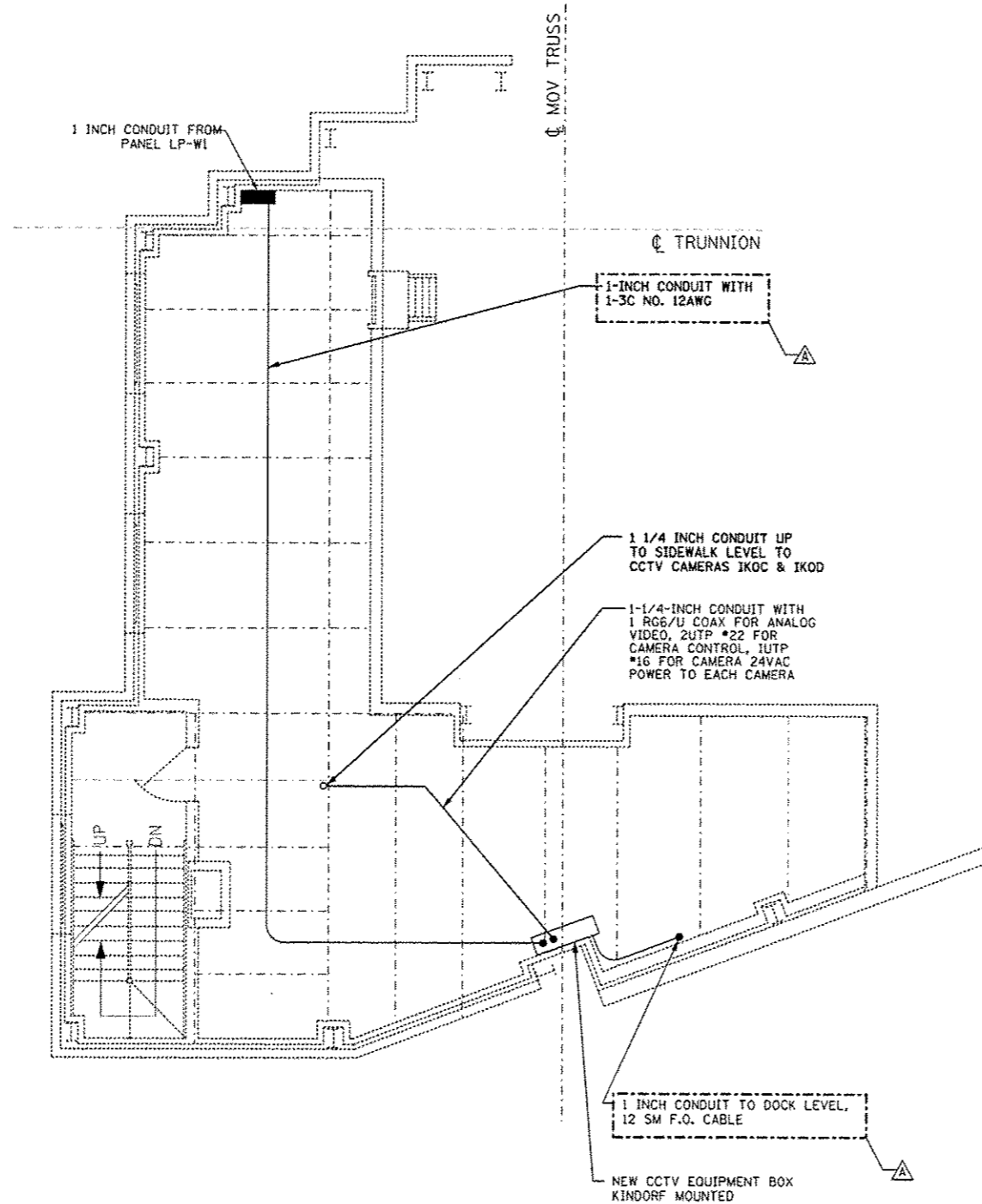
USER NAME: kpateld	DESIGNED: D. DRAKULICH	REVISED: 12/20/2013 D.C.P.
FILE NAME:	DRAWN: E. MALUSEL	REVISED:
PLOT SCALE: NONE	CHECKED: S. STERN	REVISED:
PLOT DATE: 10/16/2013	DATE: 10/18/2013	REVISED:

**STATE OF ILLINOIS
DEPARTMENT OF TRANSPORTATION**

**CCTV SYSTEM, I-90/94 TO CONGRESS PARKWAY
WEST SIDE DOCK LEVEL**

SCALE: AS SHOWN SHEET NO. OF SHEETS STA. 353+46.00 TO STA. 382+50.00

F.A.P. R.T.E. 389	SECTION 2013-026-1	COUNTY COOK	TOTAL SHEETS 37	SHEET NO. 17
CONTRACT NO. 60W49			FED. ROAD DIST. NO. 1 ILLINOIS FED. AID PROJECT	



- NOTES:**
1. FOR GENERAL AND ELECTRICAL NOTES, SEE DWG'S 2, 3 & 4.
 2. FOR ELECTRICAL SYMBOLS AND ABBREVIATIONS, SEE DWG. 5
 3. FOR PANEL SCHEDULES, SEE DWG 22.
 4. FOR EQUIPMENT DESCRIPTIONS SEE ELECTRICAL SPECIFICATIONS.

NORTH WEST SIDE MEZZANINE LEVEL CONTROL HOUSE CCTV LAYOUT PLAN
N.T.S.

T:\16843A\CCTV\Files from NY\89-17-2013\16843A-CCTV-E13-18_Wst-MezzLv.rvt10-17-2013.dgn
 18-DEC-2013 18:15

**PARSONS
BRINCKERHOFF**
230 West Monroe Street
Suite 600
Chicago, IL 60606

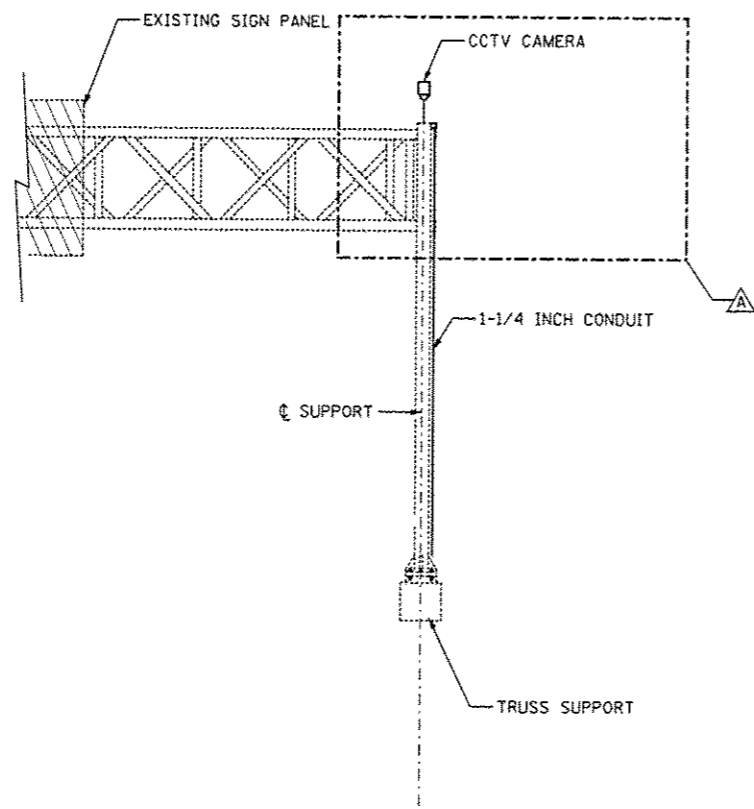
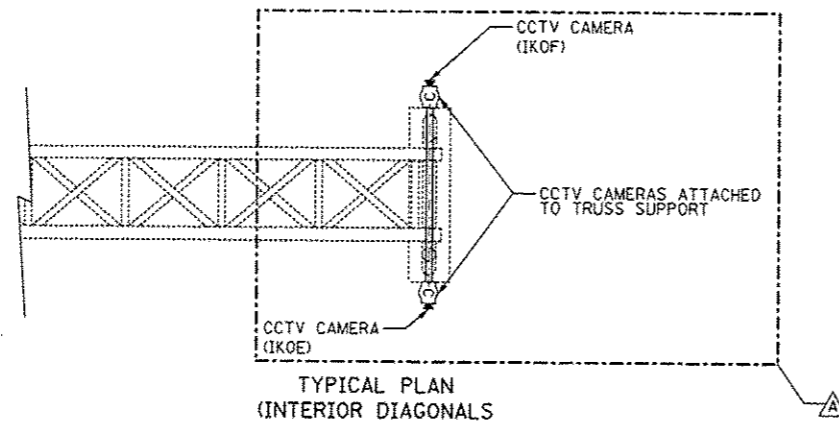
USER NAME: pssteld	DESIGNED - D. DRAKULICH	REVISED Δ 12/20/2013 D.C.P.
FILE NAME:	DRAWN - E. MALUSEL	REVISED -
PLOT SCALE: NONE	CHECKED - S. STERN	REVISED -
PLOT DATE: 12/18/2013	DATE - 10/18/2013	REVISED -

STATE OF ILLINOIS
DEPARTMENT OF TRANSPORTATION

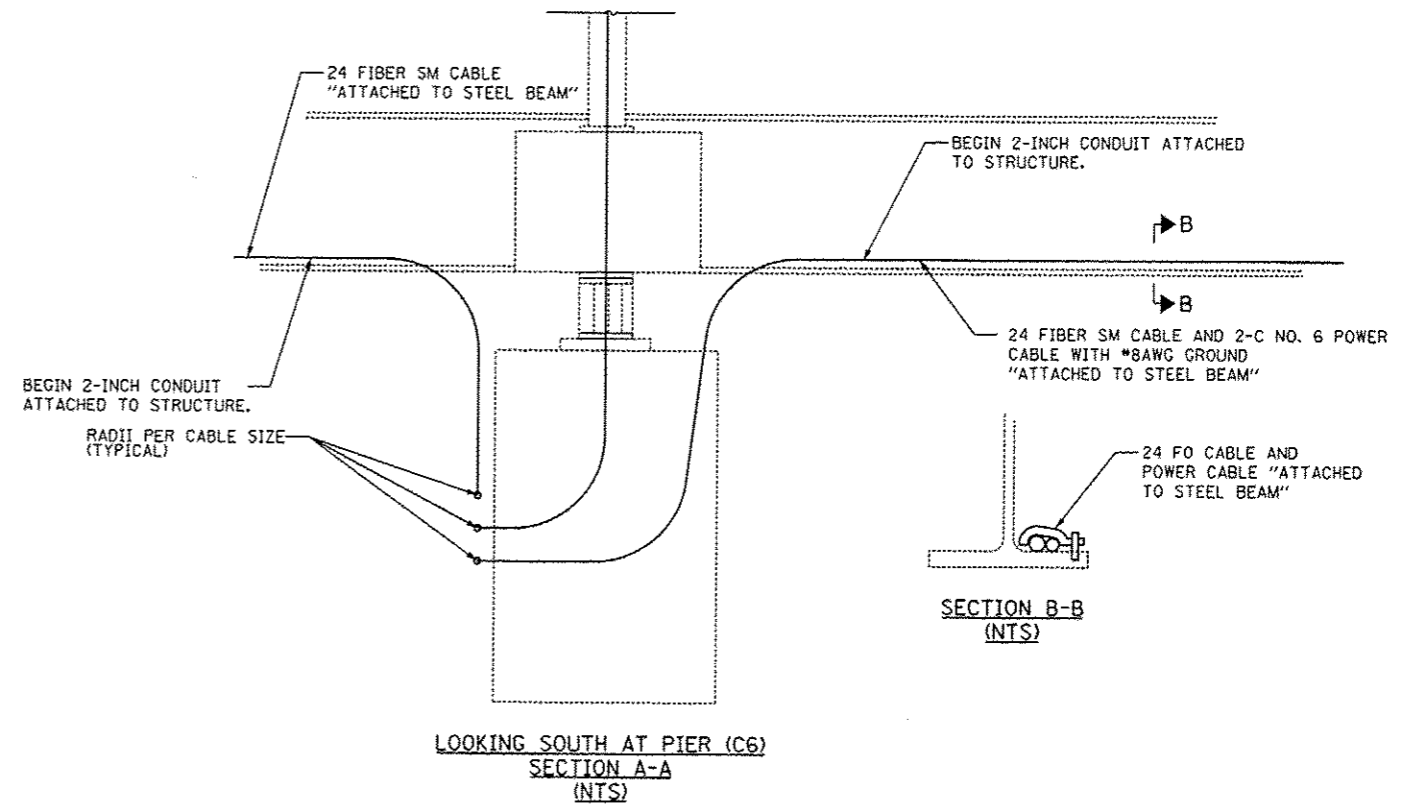
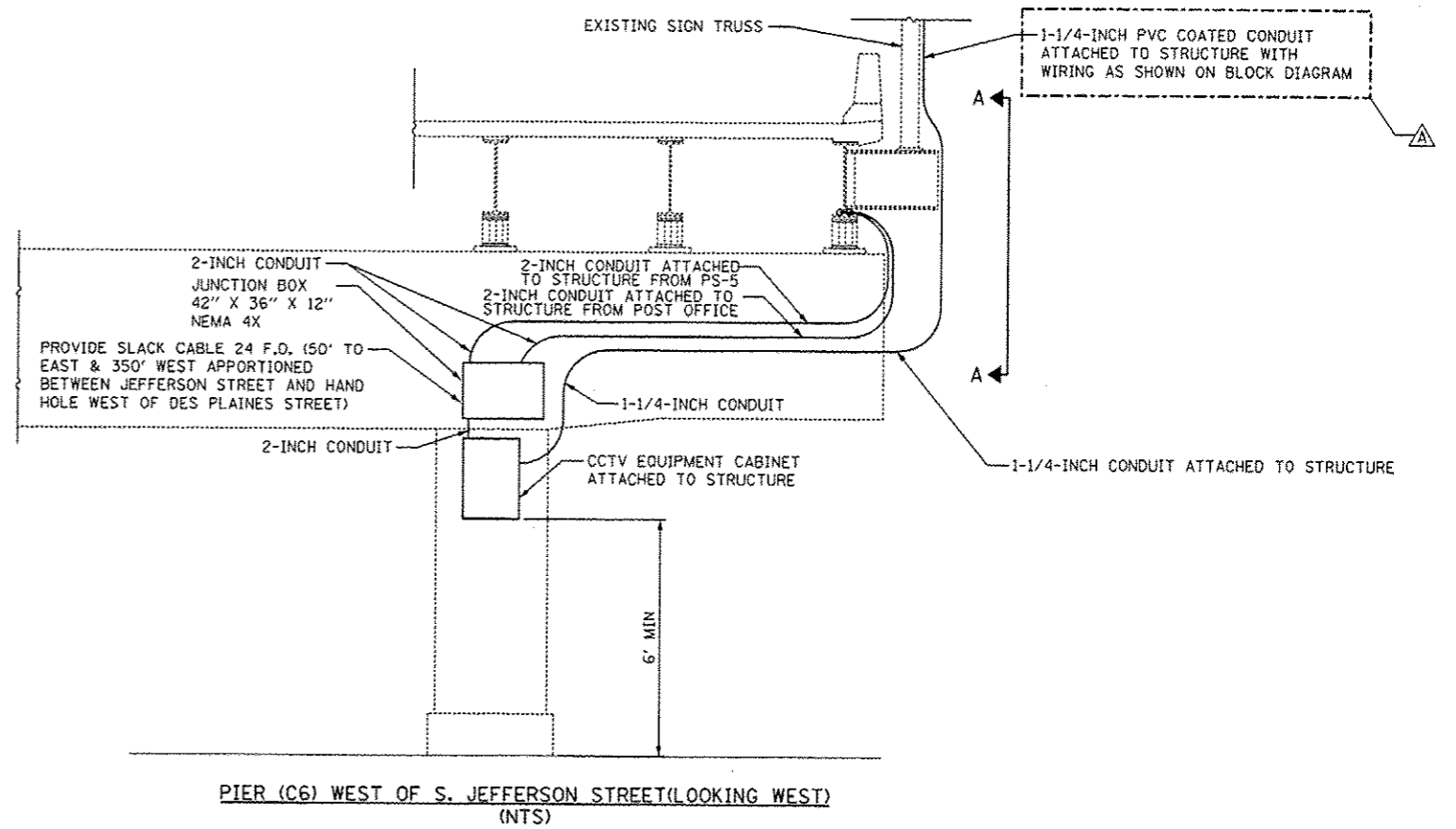
CCTV SYSTEM, I-90/94 TO CONGRESS PARKWAY
WEST SIDE MEZZANINE LEVEL

SCALE: AS SHOWN SHEET NO. OF SHEETS STA. 353+46.00 TO STA. 362+50.00

F.A.P. R/F:	SECTION	COUNTY	TOTAL SHEETS	SHEET NO.
389	2013-026-1	COOK	37	18
CONTRACT NO. 60W49			FED. ROAD DIST. NO. 1 ILLINOIS FED. AID PROJECT	



OVERHEAD SIGN STRUCTURE (F1)
GENERAL PLAN & ELEVATION - LOOKING WEST
ALUMINUM TRUSS & STEEL SUPPORTS
(NTS)



SECTION B-B
(NTS)

I:\16843A\CCTV\Files From NY\09-17-2013\16843A-CongrPrK8F-CCTV_E-09_ST_rev_10-16-2013.dgn 19-DEC-2013 10:15

PARSONS BRINCKERHOFF
220 West Monroe Street
Suite 700
Chicago, IL 60606

USER NAME - patold	DESIGNED - D. DRAKULICH	REVISED - 12/20/2013 D.C.P.
FILE NAME	DRAWN - E. MALUSEL	REVISED -
PLOT SCALE - NONE	CHECKED - S. STERN	REVISED -
PLOT DATE - 10/18/2013	DATE - 10/18/2013	REVISED -

STATE OF ILLINOIS
DEPARTMENT OF TRANSPORTATION

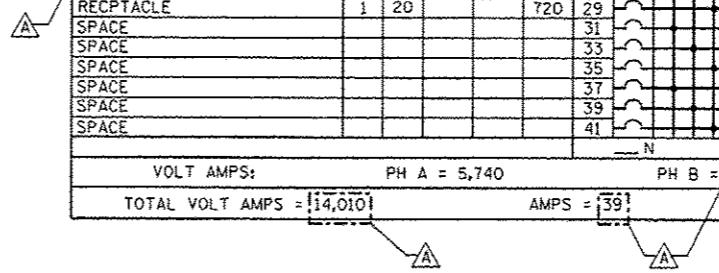
CCTV SYSTEM, I-90/4 TO CONGRESS PARKWAY
CCTV DETAIL AT JEFFERSON STREET
SCALE: AS SHOWN SHEET NO. OF SHEETS STA. 353+46.00 TO STA. 382+50.00

F.A.P. RTE. 389	SECTION 2013-026-1	COUNTY COOK	TOTAL SHEETS 37	SHEET NO. 20
CONTRACT NO. 60W49				

FED. ROAD DIST. NO. 1 ILLINOIS FED. AID PROJECT

PANEL DESIGNATION: LP-E1										VOLTAGE: 208/120V, 3PH, 4W, 60HZ									
LOCATION: EAST SIDE MEZZANINE										MAIN CKT BRK: 225AF, 150AT, 3POLE									
TYPE: <input type="checkbox"/> FLUSH <input checked="" type="checkbox"/> SURFACE										MAINS: 225AMP, <input checked="" type="checkbox"/> TOP, <input type="checkbox"/> BOTTOM, <input type="checkbox"/> MLO									
LOAD DESCRIPTION	BREAKER POLE	TRIP	VA A	VA B	VA C	CKT				CKT	VA A	VA B	VA C	BREAKER TRIP	POLE	LOAD DESCRIPTION			
MEZZ LEVEL LIGHTING	1	20	520			1				2	696			20	I	DOCK LEVEL LIGHTING			
MEZZ LEVEL LIGHTING	1	20		520		3				4		696		20	I	DOCK LEVEL LIGHTING			
EXIT LIGHT	1	20				5				6			1071	20	I	STAIR LIGHTING			
DOCK LEVEL LIGHTING	1	20	924			7				8	1271			20	I	DOCK LEVEL RECEPTACLES			
DOCK LEVEL LIGHTING	1	20		924		9				10		1059		20	I	DOCK LEVEL RECEPTACLES			
FIRE ALARM CONTROL PANEL	1	20			600	11				12				20	I	SPARE			
DOCK LEVEL LIGHTING	1	20	924			13				14	1059			20	I	MEZZ RECEPTACLES			
DOCK LEVEL LIGHTING	1	20		693		15				16		847		20	I	MEZZ RECEPTACLES			
SPARE	1	20				17				18				20	I	SPARE			
EMER BATT UNIT DOCK LEVEL	1	20	276			19				20	924			20	I	DOCK LEVEL LIGHTING			
EMER BATT UNIT DOCK LEVEL	1	20		276		21				22		924		20	I	DOCK LEVEL LIGHTING			
SPARE	1	20				23				24				20	I	SPARE			
CCTV CAMERA POWER SUPPLY	1	20	200			25				26	237			20	I	EMERG BAT UNIT			
SPARE	1	20				27				28		237		20	I	EMERG BAT UNIT			
RECEPTACLES	1	20			720	29				30			609	20	I	LTG VERTICAL CORE			
SPACE	1					31				32					I	SPACE			
SPACE	1					33				34					I	SPACE			
SPACE	1					35				36					I	SPACE			
SPACE	1					37				38					I	SPACE			
SPACE	1					39				40					I	SPACE			
SPACE	1					41				42					I	SPACE			
										N G									
VOLT AMPS: PH A = 7,031										PH B = 6,176 PH C = 3,000									
TOTAL VOLT AMPS = 16,207										AMPS = 45 AIC-RMS = 22,000 @ 208VAC, 3PHASE									

PANEL DESIGNATION: LP-W1										VOLTAGE: 208/120V, 3PH, 4W, 60HZ									
LOCATION: WEST SIDE MEZZANINE										MAIN CKT BRK: 225AF, 150AT, 3POLE									
TYPE: <input type="checkbox"/> FLUSH <input checked="" type="checkbox"/> SURFACE										MAINS: 225AMP, <input checked="" type="checkbox"/> TOP, <input type="checkbox"/> BOTTOM, <input type="checkbox"/> MLO									
LOAD DESCRIPTION	BREAKER POLE	TRIP	VA A	VA B	VA C	CKT				CKT	VA A	VA B	VA C	BREAKER TRIP	POLE	LOAD DESCRIPTION			
MEZZ LEVEL LIGHTING	1	20	433			1				2	609			20	I	DOCK LEVEL LIGHTING			
MEZZ LEVEL LIGHTING	1	20		520		3				4		522		20	I	DOCK LEVEL LIGHTING			
EXIT LIGHT	1	20				5				6			609	20	I	STAIR LIGHTING			
DOCK LEVEL LIGHTING	1	20	693			7				8	1059			20	I	DOCK LEVEL RECEPTACLES			
DOCK LEVEL LIGHTING	1	20		462		9				10		1270		20	I	DOCK LEVEL RECEPTACLES			
FIRE ALARM CONTROL PANEL	1	20			600	11				12				20	I	SPARE			
DOCK LEVEL LIGHTING	1	20	693			13				14	847			20	I	MEZZ LEVEL RECEPTACLES			
DOCK LEVEL LIGHTING	1	20		693		15				16		1059		20	I	MEZZ LEVEL RECEPTACLES			
SPARE	1	20				17				18				20	I	SPARE			
EMER BATT UNIT DOCK LEVEL	1	20	276			19				20	693			20	I	DOCK LEVEL LIGHTING			
EMER BATT UNIT DOCK LEVEL	1	20		276		21				22		693		20	I	DOCK LEVEL LIGHTING			
SPARE	1	20				23				24				20	I	SPARE			
CCTV CAMERA POWER SUPPLY	1	20	200			25				26	237			20	I	EMERG BAT UNIT			
SPARE	1	20				27				28		237		20	I	EMERG BAT UNIT			
RECEPTACLE	1	20			720	29				30			609	20	I	LTG VERTICAL CORE			
SPACE	1					31				32					I	SPACE			
SPACE	1					33				34					I	SPACE			
SPACE	1					35				36					I	SPACE			
SPACE	1					37				38					I	SPACE			
SPACE	1					39				40					I	SPACE			
SPACE	1					41				42					I	SPACE			
										N G									
VOLT AMPS: PH A = 5,740										PH B = 5,732 PH C = 2,538									
TOTAL VOLT AMPS = 14,010										AMPS = 39 AIC-RMS = 22,000 @ 208VAC, 3PHASE									



T:\164343\B\CCTV\files from NY\19-17-2013\164343-CCTV-E15-20_PanelSchedule.dgn
19-DEC-2013 18:15

PARSONS BRINCKERHOFF 240 West Monroe Street Suite 900 Chicago, IL 60666	USER NAME : pstejd	DESIGNED : D. DRAKULICH	REVISED : 12/20/2013 D.C.P.	STATE OF ILLINOIS DEPARTMENT OF TRANSPORTATION	CCTV SYSTEM, I-90/94 TO CONGRESS PARKWAY PANEL SCHEDULES	F.A.P. RTE. : 389	SECTION : 2013-026-I	COUNTY : COOK	TOTAL SHEETS : 37	SHEET NO. : 22
	FILE NAME :	DRAWN : E. MALUSEL	REVISIONS :			SCALE: AS SHOWN	SHEET NO. OF SHEETS :	STA. 353+46.00 TO STA. 392+50.00	FED. ROAD DIST. NO. 1 ILLINOIS FED. AID PROJECT	
	PLOT SCALE : NONE	CHECKED : S. STERN	REVISIONS :							
	PLOT DATE : 10/18/2013	DATE : 10/18/2013	REVISIONS :							

LATERAL CABLE FIBER ASSIGNMENTS		
LCF-EBH		
FIBER NO	FUNCTION	CONNECTION
1	CCTV CAMERA IKOA (at Southeast Bridge House)	Fiber #1 of 96-strand SubM trunk cable
2	CCTV CAMERA IKOB (at Southeast Bridge House)	Fiber #2 of 96-strand SubM trunk cable
3	DARK	
4	DARK	
5	DARK	
6	DARK	
7	DARK	
8	DARK	
9	DARK	
10	DARK	
11	DARK	
12	DARK	

LATERAL CABLE FIBER ASSIGNMENTS		
LCF-SJS		
FIBER NO	FUNCTION	CONNECTION
1	CCTV CAMERA IKOE (at So. Jefferson St.)	Fiber #7 of 24-strand West trunk cable
2	CCTV CAMERA IKOF (at So. Jefferson St.)	Fiber #8 of 24-strand West trunk cable
3	DARK	
4	DARK	
5	DARK	
6	DARK	
7	DARK	
8	DARK	
9	DARK	
10	DARK	
11	DARK	
12	DARK	

LATERAL CABLE FIBER ASSIGNMENTS		
LCF-WBH		
FIBER NO	FUNCTION	CONNECTION
1	CCTV CAMERA IKOC (at Northwest Bridge House)	Fiber #3 of 96-strand West trunk cable
2	CCTV CAMERA IKOD (at Northwest Bridge House)	Fiber #4 of 96-strand West trunk cable
3	DARK	
4	DARK	
5	DARK	
6	DARK	
7	DARK	
8	DARK	
9	DARK	
10	DARK	
11	DARK	
12	DARK	

LATERAL CABLE FIBER ASSIGNMENTS		
LCF-dms		
FIBER NO	FUNCTION	CONNECTION
1	ETHERNET - Tx	Fiber #5 of 96-strand West trunk cable
2	ETHERNET - Rx	Fiber #6 of 96-strand West trunk cable
3	DARK	
4	DARK	
5	DARK	
6	DARK	
7	DARK	
8	DARK	
9	DARK	
10	DARK	
11	DARK	
12	DARK	

T:\16843A\CCTV\Fiber from NY\19-17-2013\12-strand-laterals.dgn
19-DEC-2013 18:15

**PARSONS
BRINCKERHOFF**
230 West Monroe Street
Suite 900
Chicago, IL 60606

USER NAME - pstald	DESIGNED - D. DRAKULICH	REVISED - 12/20/2013 D.C.P.
FILE NAME	DRAWN - E. MALUSEL	REVISED -
PLOT SCALE - NONE	CHECKED - S. STERN	REVISED -
PLOT DATE - 10/18/2013	DATE - 10/18/2013	REVISED -

STATE OF ILLINOIS
DEPARTMENT OF TRANSPORTATION

CCTV SYSTEM, I-90/94 TO CONGRESS PARKWAY
TWENTY FOUR LATERAL CABLE FIBER ASSIGNMENTS

SCALE: AS SHOWN SHEET NO. OF SHEETS STA. 353+46.00 TO STA. 382+50.00

F.A.P. RTE. 389	SECTION 2013-026-1	COUNTY COOK	TOTAL SHEETS 37	SHEET NO. 23
CONTRACT NO. 60W49				
FED. ROAD DIST. NO. 1 ILLINOIS FED. AID PROJECT				

TRUNK CABLE FIBER ASSIGNMENTS			
TRUNK CABLE DESIGNATION TCF-24 STRAND WEST			
BUFFER TUBE	FIBER	FIBER NO	ASSIGNMENT
BLUE	Blue	1	CCTV CAMERA IKOA (at SE Br. Hse.) via Fiber #1 of 96-strand cable
	Orange	2	CCTV CAMERA IKOB (at SE Br. Hse.) via Fiber #2 of 96-strand cable
	Green	3	CCTV CAMERA IKOC (at Northwest Bridge House)
	Brown	4	CCTV CAMERA IKOD (at Northwest Bridge House)
	Slate	5	DMS Controller Ethernet Tx line
	White	6	DMS Controller Ethernet Rx line
	Red	7	CCTV CAMERA IKOE (at So. Jefferson St.)
	Black	8	CCTV CAMERA IKOF (at So. Jefferson St.)
	Yellow	9	DARK
	Violet	10	DARK
	Rose	11	DARK
	Aqua	12	DARK
ORANGE	Blue	13	DARK
	Orange	14	DARK
	Green	15	DARK
	Brown	16	DARK
	Slate	17	DARK
	White	18	DARK
	Red	19	DARK
	Black	20	DARK
	Yellow	21	DARK
	Violet	22	DARK
	Rose	23	DARK
	Aqua	24	DARK

TRUNK CABLE FIBER ASSIGNMENTS			
TRUNK CABLE DESIGNATION TCF-24 STRAND EAST			
BUFFER TUBE	FIBER	FIBER NO	ASSIGNMENT
BLUE	Blue	1	CCTV CAMERA IKOA (at SE Br. Hse.) via Fiber #1 of 96-strand cable
	Orange	2	CCTV CAMERA IKOB (at SE Br. Hse.) via Fiber #2 of 96-strand cable
	Green	3	CCTV CAMERA IKOC (at Northwest Bridge House)
	Brown	4	CCTV CAMERA IKOD (at Northwest Bridge House)
	Slate	5	DMS Controller Ethernet Tx line
	White	6	DMS Controller Ethernet Rx line
	Red	7	DARK
	Black	8	DARK
	Yellow	9	DARK
	Violet	10	DARK
	Rose	11	DARK
	Aqua	12	DARK
ORANGE	Blue	13	DARK
	Orange	14	DARK
	Green	15	DARK
	Brown	16	DARK
	Slate	17	DARK
	White	18	DARK
	Red	19	DARK
	Black	20	DARK
	Yellow	21	DARK
	Violet	22	DARK
	Rose	23	DARK
	Aqua	24	DARK

TRUNK CABLE FIBER ASSIGNMENTS			
TRUNK CABLE DESIGNATION TCF-96 STRAND WEST			
BUFFER TUBE	FIBER	FIBER NO	ASSIGNMENT
BLUE	Blue	1	CCTV CAMERA IKOA (at SE Br. Hse.) via Fiber #1 of 96-strand cable
	Orange	2	CCTV CAMERA IKOB (at SE Br. Hse.) via Fiber #2 of 96-strand cable
	Green	3	CCTV CAMERA IKOC (at Northwest Bridge House)
	Brown	4	CCTV CAMERA IKOD (at Northwest Bridge House)
	Slate	5	DMS Controller Ethernet Tx line
	White	6	DMS Controller Ethernet Rx line
	Red	7	DARK
	Black	8	DARK
	Yellow	9	DARK
	Violet	10	DARK
	Rose	11	DARK
	Aqua	12	DARK
ORANGE	Blue	13	DARK
	Orange	14	DARK
	Green	15	DARK
	Brown	16	DARK
	Slate	17	DARK
	White	18	DARK
	Red	19	DARK
	Black	20	DARK
	Yellow	21	DARK
	Violet	22	DARK
	Rose	23	DARK
	Aqua	24	DARK
GREEN	Blue	25	DARK
	Orange	26	DARK
	Green	27	DARK
	Brown	28	DARK
	Slate	29	DARK
	White	30	DARK
	Red	31	DARK
	Black	32	DARK
	Yellow	33	DARK
	Violet	34	DARK
	Rose	35	DARK
	Aqua	36	DARK
BROWN	Blue	37	DARK
	Orange	38	DARK
	Green	39	DARK
	Brown	40	DARK
	Slate	41	DARK
	White	42	DARK
	Red	43	DARK
	Black	44	DARK
	Yellow	45	DARK
	Violet	46	DARK
	Rose	47	DARK
	Aqua	48	DARK

NOTE: FIBERS 49 THROUGH 96 ARE DARK.

T:\1684348\CCTV\Fiber From NY\17-2013824-strand trunk.dgn
19-DEC-2013 18:15

PARSONS BRINCKERHOFF
230 West Monroe Street
Suite 100
Chicago, IL 60606

USER NAME - patold	DESIGNED - D. DRAKULICH	REVISED - 12/20/2013 D.C.P.
FILE NAME	DRAWN - E. MALUSEL	REVISED -
PLOT SCALE - NONE	CHECKED - S. STERN	REVISED -
PLOT DATE - 10/18/2013	DATE - 10/18/2013	REVISED -

STATE OF ILLINOIS
DEPARTMENT OF TRANSPORTATION

CCTV SYSTEM I-90/94 TO CONGRESS PARKWAY
TWENTY FOUR AND NINETY SIX FIBER TRUNK CABLE FIBER ASSIGNMENTS
SCALE: AS SHOWN SHEET NO. OF SHEETS STA. 353+46.00 TO STA. 382+50.00

F.A.P. RTE.	SECTION	COUNTY	TOTAL SHEETS	SHEET NO.
389	2013-026-1	COOK	37	24
FED. ROAD DIST. NO. 1 ILLINOIS FED. AID PROJECT			CONTRACT NO. 60W49	

TRUNK CABLE FIBER ASSIGNMENTS				ORIGINATION			
TRUNK CABLE DESIGNATION				DESTINATION			
TCF-96 strand	SUBM						
BUFFER TUBE	FIBER	FIBER NO	ASSIGNMENT	BUFFER TUBE	FIBER NO	FIBER NO	ASSIGNMENT
BLUE	Blue	1	CCTV CAMERA IKOA (at Southeast Bridge House)	SLATE	Blue	49	DARK
	Orange	2	CCTV CAMERA IKOB (at Southeast Bridge House)		Orange	50	DARK
	Green	3	DARK		Green	51	DARK
	Brown	4	DARK		Brown	52	DARK
	Slate	5	DARK		Slate	53	DARK
	White	6	DARK		White	54	DARK
	Red	7	DARK		Red	55	DARK
	Black	8	DARK		Black	56	DARK
	Yellow	9	DARK		Yellow	57	DARK
	Violet	10	DARK		Violet	58	DARK
	Rose	11	DARK		Rose	59	DARK
	Aqua	12	DARK		Aqua	60	DARK
ORANGE	Blue	13	DARK	WHITE	Blue	61	DARK
	Orange	14	DARK		Orange	62	DARK
	Green	15	DARK		Green	63	DARK
	Brown	16	DARK		Brown	64	DARK
	Slate	17	DARK		Slate	65	DARK
	White	18	DARK		White	66	DARK
	Red	19	DARK		Red	67	DARK
	Black	20	DARK		Black	68	DARK
	Yellow	21	DARK		Yellow	69	DARK
	Violet	22	DARK		Violet	70	DARK
	Rose	23	DARK		Rose	71	DARK
	Aqua	24	DARK		Aqua	72	DARK
GREEN	Blue	25	DARK	RED	Blue	73	DARK
	Orange	26	DARK		Orange	74	DARK
	Green	27	DARK		Green	75	DARK
	Brown	28	DARK		Brown	76	DARK
	Slate	29	DARK		Slate	77	DARK
	White	30	DARK		White	78	DARK
	Red	31	DARK		Red	79	DARK
	Black	32	DARK		Black	80	DARK
	Yellow	33	DARK		Yellow	81	DARK
	Violet	34	DARK		Violet	82	DARK
	Rose	35	DARK		Rose	83	DARK
	Aqua	36	DARK		Aqua	84	DARK
BROWN	Blue	37	DARK	BLACK	Blue	85	DARK
	Orange	38	DARK		Orange	86	DARK
	Green	39	DARK		Green	87	DARK
	Brown	40	DARK		Brown	88	DARK
	Slate	41	DARK		Slate	89	DARK
	White	42	DARK		White	90	DARK
	Red	43	DARK		Red	91	DARK
	Black	44	DARK		Black	92	DARK
	Yellow	45	DARK		Yellow	93	DARK
	Violet	46	DARK		Violet	94	DARK
	Rose	47	DARK		Rose	95	DARK
	Aqua	48	DARK		Aqua	96	DARK

I:\1684348\CCTV\Fiber from NY89-17-2013\896-strand trunk.dgn 19-DEC-2013 18:15

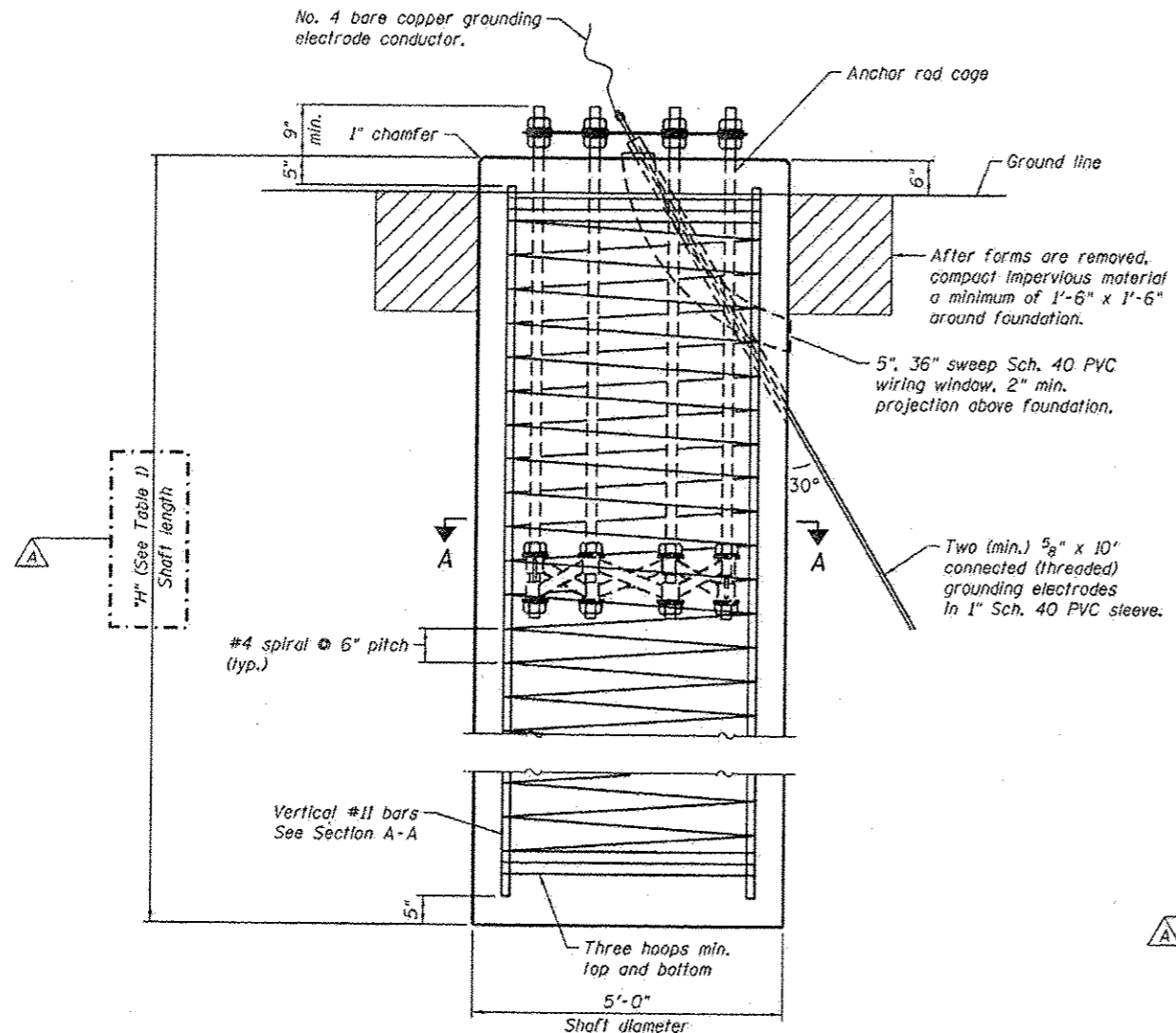
PARSONS BRINCKERHOFF
 230 West Monroe Street
 Suite 900
 Chicago, IL 60666

USER NAME - patold	DESIGNED - O. DRAKULICH	REVISED - 12/20/2013 D.C.P.
FILE NAME	DRAWN - E. MALUSEL	REVISED -
PLOT SCALE - NONE	CHECKED - S. STERN	REVISED -
PLOT DATE - 10/18/2013	DATE - 10/18/2013	REVISED -

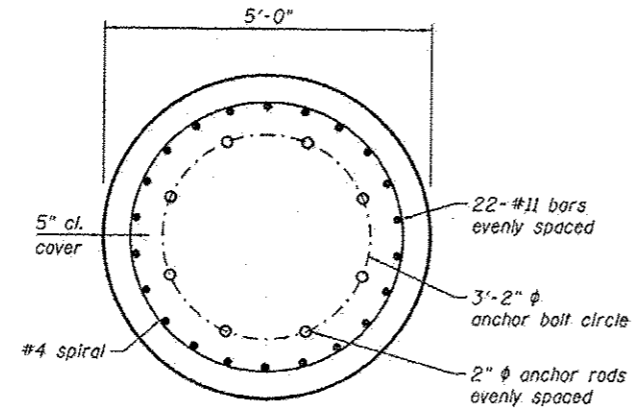
STATE OF ILLINOIS
 DEPARTMENT OF TRANSPORTATION

CCTV SYSTEM, I-90/94 TO CONGRESS PARKWAY
 NINETY SIX SUBMARINE FIBER TRUNK CABLE FIBER ASSIGNMENTS
 SCALE: AS SHOWN SHEET NO. OF SHEETS STA. 353+46.00 TO STA. 382+50.00

F.A.P. RTE. 389	SECTION 2013-026-1	COUNTY COOK	TOTAL SHEETS 37	SHEET NO. 25
FED. ROAD DIST. NO. 1 ILLINOIS FED. AID PROJECT CONTRACT NO. 60W49				



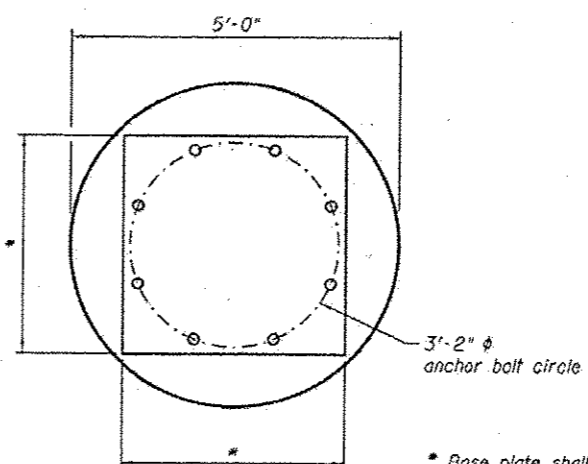
FOUNDATION ELEVATION



SECTION A-A

Table 1

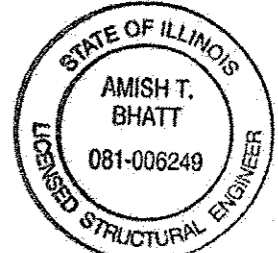
Location	"H"
COMM. HUT.-CCTV	53'-0"
PS-5-CCTV	40'-0"



BASE PLATE LAYOUT

NOTES:

1. The shaft length(s) are based on nearest available soil borings. If different soils are encountered, the engineer shall be notified to provide a revised length.
2. Anchor rod quantity, diameter and length shall be determined by the tower manufacturer and approved by the Engineer. Each foundation shall have a minimum of 8 anchor rods.
3. All foundation reinforcement steel shall be epoxy coated.
4. The cost of the foundation is incidental to the cost of the CCTV Tower.
5. Steel anchor rod forms shall not be removed for a minimum of 3 days after concrete is poured. The tower shall not be set for a minimum of 7 days or as approved by the Engineer.
6. The foundation shall be poured monolithically and shall have no construction joints.
7. Grounding electrodes shall be installed in an access well when there is a conflict in using the method shown.
8. Coordinate the rod circle diameter of the tower with the diameter of the anchor rod cage.



Amish T. Bhatt
 11/27/2013
 License Expires: 11/30/2014
 Sheet Range: 30 & 31

CCTV-50W49-S01-CCTV Tower Foundation.dgn



USER NAME • bhatta	DESIGNED - DEV	REVISED Δ 11/27/13 ATB
PLOT SCALE • N.T.S.	CHECKED - ATB	REVISED
PLOT DATE • 10/18/2013	DRAWN - MRK	REVISED
	CHECKED - JML	REVISED

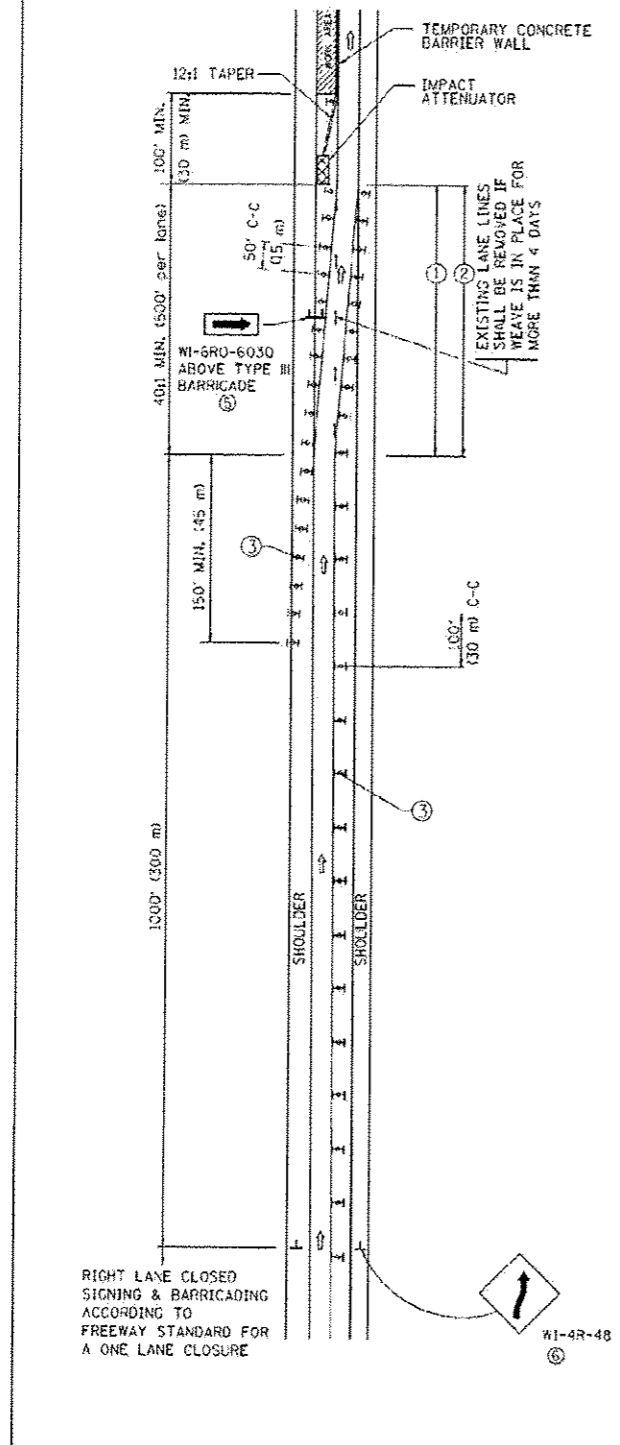
STATE OF ILLINOIS
 DEPARTMENT OF TRANSPORTATION

CCTV SYSTEM, I-9094 TO CONGRESS PARKWAY
 TOWER FOUNDATION PLANS 1 OF 2

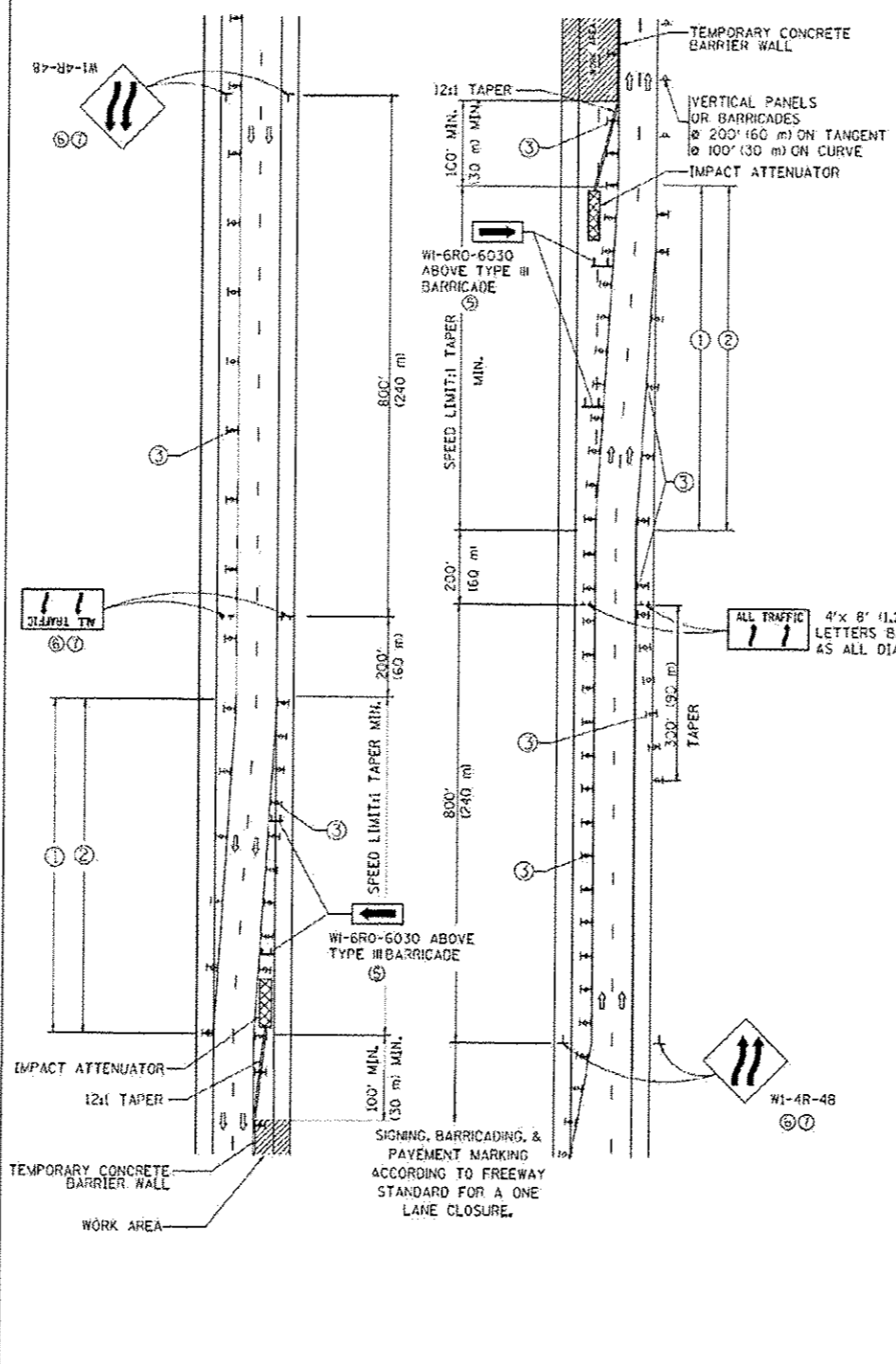
F.A.P. RTE.	SECTION	COUNTY	TOTAL SHEETS	SHEET NO.
389	2013-026-1	COOK	37	30
CONTRACT NO. 60W49				
ILLINOIS FED. AID PROJECT				

SHEET NO. S-1 OF S-2 SHEETS

SINGLE LANE WEAVE



MULTI-LANE WEAVE



- GENERAL NOTES**
- EXISTING CONFLICTING PAVEMENT MARKING LINES SHALL BE REMOVED. PAVEMENT MARKING REMOVAL SHALL NOT BE REQUIRED FOR SINGLE LANE WEAVES UNDER 4 DAYS IN DURATION.
 - CONTINUOUS REFLECTIVE TEMPORARY PAVEMENT MARKING TAPE SHALL BE PLACED THROUGHOUT THE TAPER AND FOR 300' (90 m) ALONG SIDE THE WORK AREA WHERE THE CLOSURE TIME IS GREATER THAN FOURTEEN DAYS. THE LEFT EDGE LINE SHALL BE YELLOW AND THE RIGHT EDGE LINE SHALL BE WHITE. FOR MULTI-LANE WEAVES LANE LINES SHALL BE 6 INCH, 10'-30' (3 m-9 m) SKIP DASH, WHITE.
 - PLASTIC DRUMS WITH STEADY BURN LIGHTS AT 50' (15 m) C-C SPACING IN TAPERS AND 100' (30 m) C-C SPACING IN TANGENTS.
 - ALL SIGNS SHALL BE POST MOUNTED IF THE CLOSURE TIME EXCEEDS FOUR DAYS.
 - TYPE III BARRICADES MAY BE OMITTED FOR SINGLE-LANE WEAVES UNDER 24-HOURS IN DURATION. W1-6 SIGNS WILL STILL BE REQUIRED. IF THE WIDTH OF OFFSET IS LESS THAN 6' THEN THE TYPE III BARRICADE WITH ATTACHED ARROW SIGN PANEL CAN BE ELIMINATED IN THE TAPER AREAS.
 - WHEN THE LENGTH OF THE SHIFTED SEGMENT (DISTANCE BETWEEN WEAVE POINTS) IS LESS THAN 1500', DOUBLE REVERSE CURVE SIGNS (W24-1) SHOULD BE USED INSTEAD OF THE REVERSE CURVE (W1-4) SIGNS. ARROWS ON THE 4'x8' "ALL TRAFFIC" SIGNS SHALL BE THE SAME SHAPE.
 - THE NUMBER OF ARROWS ON THESE SIGNS SHALL MATCH THE NUMBER OF LANES OPEN TO TRAFFIC.

- SYMBOLS**
- DIRECTION OF TRAFFIC
 - WORK AREA
 - SIGN ON PORTABLE OR PERMANENT SUPPORT
 - TYPE II BARRICADE OR DRUM WITH MONO-DIRECTIONAL STEADY BURNING LIGHT
 - TEMPORARY CONCRETE BARRIER WALL
 - IMPACT ATTENUATOR

ALL TRAFFIC 4'x 8' (1.2 m x 2.4 m); 1 (25) BORDER; 10 (250) CAPITAL LETTERS BACKGROUND SHEETING SHALL BE THE SAME AS ALL DIAMOND SHAPED CONSTRUCTION SIGNS.

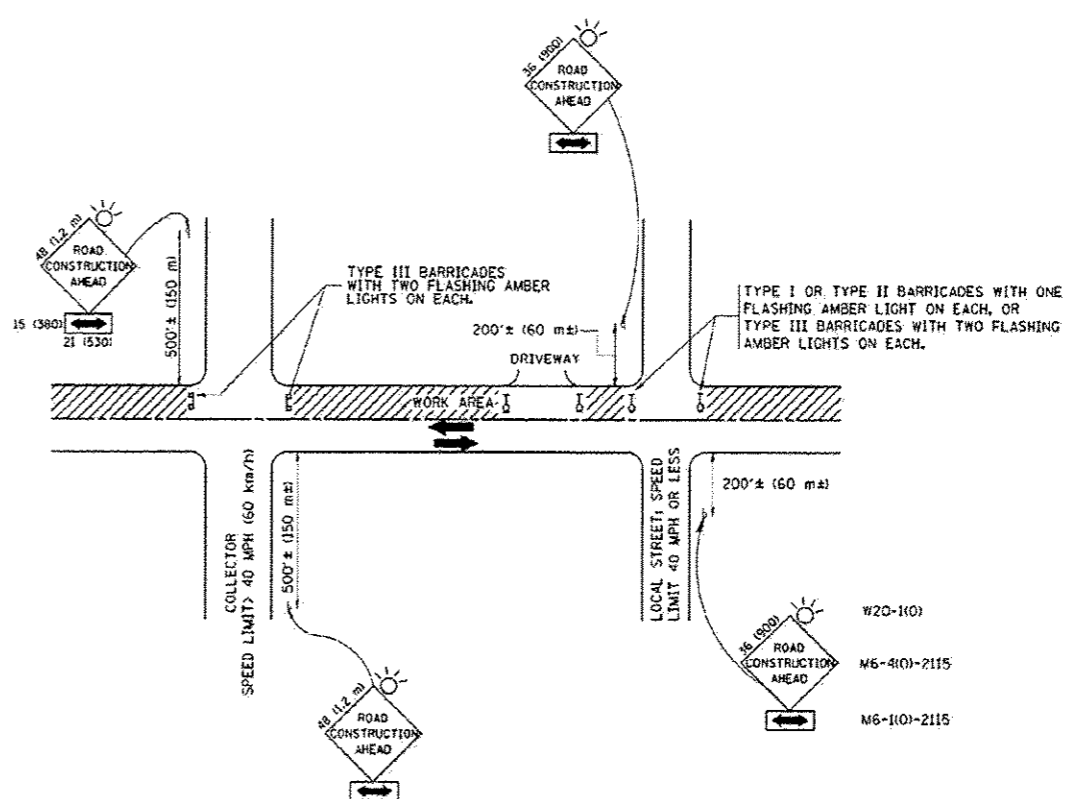
ALL DIMENSIONS ARE IN INCHES (MILLIMETERS) UNLESS OTHERWISE SHOWN

FILE NAME * c:\work\19-DEC-2013\18116	USER NAME * foxtan	DESIGNED - UWS	REVISED - JAF 02-06	STATE OF ILLINOIS DEPARTMENT OF TRANSPORTATION	TRAFFIC CONTROL DETAILS FOR FREEWAY SINGLE & MULTI-LANE WEAVE		F.A.P. RTE.	SECTION	COUNTY	TOTAL SHEETS	SHEET NO.	
PLOT SCALE * 1/8" = 1'-0"	CHECKED - SN	DATE - 02-07	REVISED - SPB 01-07		SCALE * NONE	SHEET NO. 1 OF 1	SHEETS	STA.	TO STA.	TC-09	CONTRACT NO.	
PLOT DATE * 7/1/2013	DATE - 02-07	REVISED - MD 06-13	REVISED - SPB 12-09		FED. ROAD DIST. NO. 1		ILLINOIS	FED. AID PROJECT				
					SHEET NO. 1 OF 1		SHEETS	STA.	TO STA.			
USER NAME * potold	DESIGNED - SN	REVISED	REVISED	STATE OF ILLINOIS DEPARTMENT OF TRANSPORTATION	CCTV SYSTEM, I-9094 TO CONGRESS PARKWAY SINGLE AND MULTI-LANE WEAVE		F.A.P. RTE.	SECTION	COUNTY	TOTAL SHEETS	SHEET NO.	
FILE NAME * 19-DEC-2013_18116	DRAWN - DCP	REVISED	REVISED		SCALE * NONE	SHEET NO.	OF	SHEETS	STA. 353+46.00	TO STA. 382+50.00	CONTRACT NO. 60W49	
PLOT SCALE * 1/8" = 1'-0"	CHECKED - SN	REVISED	REVISED		FED. ROAD DIST. NO. 1		ILLINOIS	FED. AID PROJECT				
PLOT DATE * 12/19/2013	DATE - 10/18/2013	REVISED	REVISED		SHEET NO.		OF	SHEETS	STA. 353+46.00	TO STA. 382+50.00	CONTRACT NO. 60W49	

1816843ABCCTVBCAD0860W49-srt_33-std-TC-9.dgn
19-DEC-2013 18116

**PARSONS
BRINCKERHOFF**
230 West Monroe Street
Suite 900
Chicago, IL 60606

Rev. 12-30-13



TRAFFIC CONTROL AND PROTECTION FOR SIDE ROADS, INTERSECTIONS, AND DRIVEWAYS

NOTES:

- A. FOR NO LANE RESTRICTION ON THE SIDE ROAD OR DRIVEWAYS
 - 1. SIDE ROAD WITH A SPEED LIMIT OF 40 MPH (60 km/h) OR LESS AS SHOWN ON THE DRAWING AND AS DIRECTED BY THE ENGINEER:
 - a) ONE ROAD CONSTRUCTION AHEAD SIGN 36 x 36 (900x900) WITH A FLASHER AND FLAG MOUNTED ON IT APPROXIMATELY 200' (60 m) IN ADVANCE OF THE MAIN ROUTE.
 - b) THE CLOSED PORTION OF THE MAIN ROUTE SHALL BE PROTECTED BY BLOCKING WITH TYPE I, TYPE II OR TYPE III BARRICADES, 1/3 OF THE CROSS SECTION OF THE CLOSED PORTION.
 - 2. SIDE ROAD WITH A SPEED LIMIT GREATER THAN 40 MPH (60 km/h) AS SHOWN ON THE DRAWING AND AS DIRECTED BY THE ENGINEER:
 - a) ONE ROAD CONSTRUCTION AHEAD SIGN 48 x 48 (1.2 m x 1.2 m) WITH A FLASHER MOUNTED ON IT APPROXIMATELY 500' (150 m) IN ADVANCE OF THE MAIN ROUTE.
 - b) THE CLOSED PORTION OF THE MAIN ROUTE SHALL BE PROTECTED BY BLOCKING WITH TYPE III BARRICADES, 1/2 OF THE CROSS SECTION OF THE CLOSED PORTION.
- 3. WHEN THE SIDE ROAD LIES BETWEEN THE BEGINNING OF THE MAINLINE SIGNING AND THE WORK ZONE, A SINGLE HEADED ARROW (M6-1) SHALL BE USED IN LIEU OF THE DOUBLE HEADED ARROW (M6-4).
- B. FOR A LANE CLOSURE ON A SIDE ROAD OR DRIVEWAY:
 - USE APPLICABLE PORTIONS OF THE TYPICAL APPLICATION OF TRAFFIC CONTROL DEVICES (STD. 70150L STD. 701604 OR THE APPROPRIATE STANDARD). THE SPACING OF SIGNS AND BARRICADES SHALL BE ADJUSTED FOR FIELD CONDITIONS AS DIRECTED BY THE ENGINEER. THE DIRECTIONAL ARROW SHALL BE COVERED OR REMOVED WHEN NO LONGER CONSISTENT WITH THE SIDE ROAD LANE CLOSURE.
- C. ADVANCE WARNING SIGNS ARE TO BE OMITTED ON DRIVEWAY UNLESS OTHERWISE NOTED.
- D. THE TRAFFIC CONTROL AND PROTECTION FOR SIDE ROADS, INTERSECTIONS, AND DRIVEWAYS SHALL BE INCIDENTAL TO THE COST OF SPECIFIED TRAFFIC CONTROL STANDARDS OR ITEMS.

All dimensions are in millimeters (inches) unless otherwise shown.

FILE NAME W:\projects\12-34\10.dgn	USER NAME gogginm001	DESIGNED LHA	REVISIONS 1 - J. OBERLE 10-18-95 2 - A. HOUSEN 03-06-96 3 - A. HOUSEN 10-15-96 4 - T. RANWACHER 01-08-00
	PLT SCALE 1/4" = 1'-0"	DRAWN DCP	
	PLOT DATE 1/4/2008	CHECKED SN	
		DATE 06-89	

STATE OF ILLINOIS
DEPARTMENT OF TRANSPORTATION

TRAFFIC CONTROL AND PROTECTION FOR SIDE ROADS, INTERSECTIONS, AND DRIVEWAYS	
SCALE: NONE	SHEET NO. 1 OF 1 SHEETS STA. TO STA.

P.A.P. RTE.	SECTION	COUNTY	TOTAL SHEETS	SHEET NO.
	TC-10		37	33
CONTRACT NO. 60W49				

TAG1684348CCTV1EC-AD0860W49-sht_34-std-TC-10.dgn 19-DEC-2013 18:16

PARSONS BRINCKERHOFF
230 West Monroe Street
Suite 900
Chicago, IL 60606

USER NAME pataid	DESIGNED SN	REVISIONS
FILE NAME	DRAWN DCP	REVISIONS
PLT SCALE 1/4" = 1'-0"	CHECKED SN	REVISIONS
PLOT DATE 12/19/2013	DATE 10/18/2013	REVISIONS

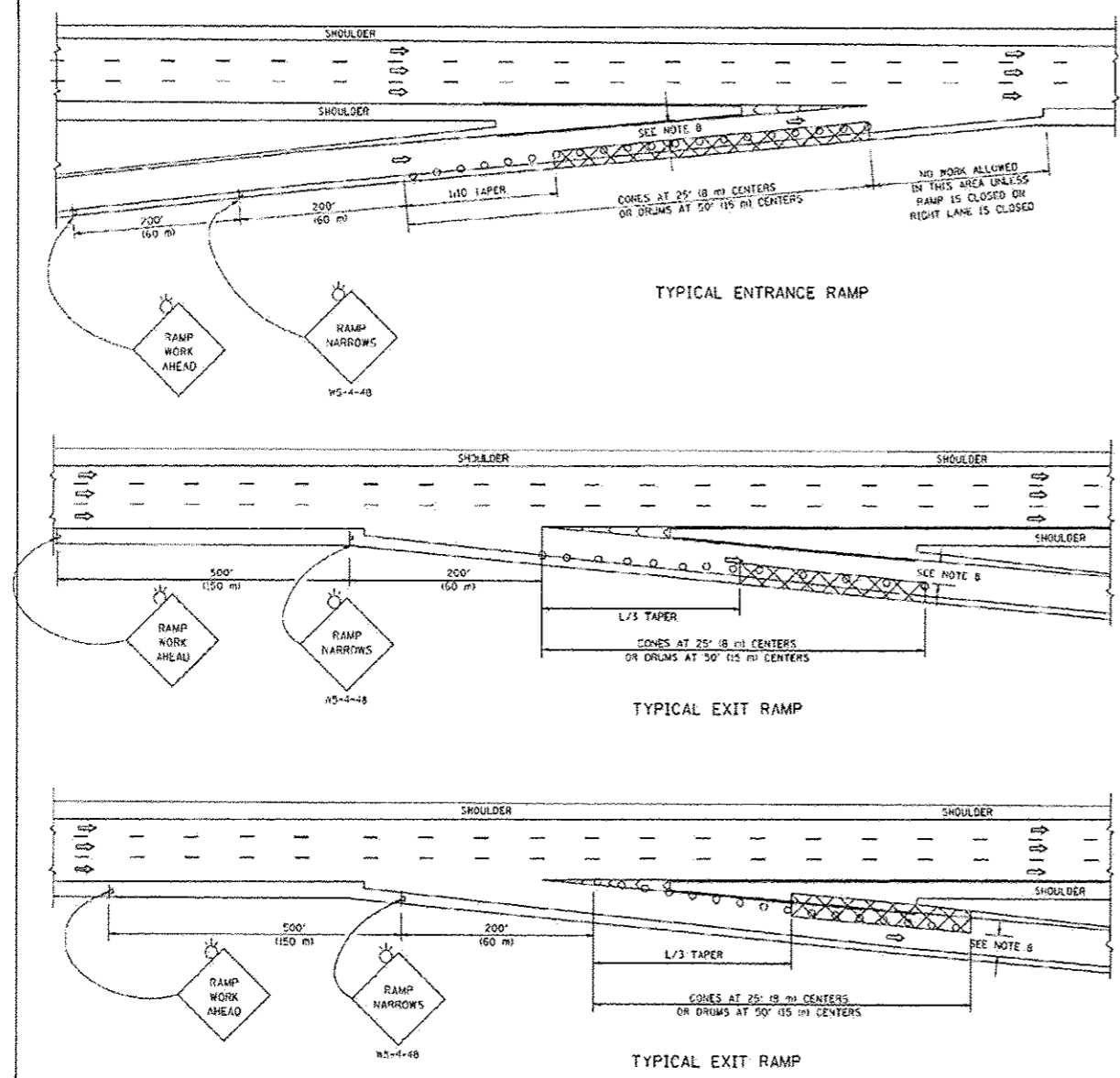
STATE OF ILLINOIS
DEPARTMENT OF TRANSPORTATION

CCTV SYSTEM, I-90/94 TO CONGRESS PARKWAY	
TRAFFIC CONTROL AND PROTECTION FOR SIDE ROADS	
SCALE: NONE	SHEET NO. OF SHEETS STA. 353+46.00 TO STA. 382+50.00

P.A.P. RTE.	SECTION	COUNTY	TOTAL SHEETS	SHEET NO.
389	2013-026-1	CODK	37	33
CONTRACT NO. 60W49				
FED. ROAD DIST. NO. 1 ILLINOIS FED. AID PROJECT				

Rev. 12-30-13

PARTIAL RAMP CLOSURE DETAILS



SYMBOLS

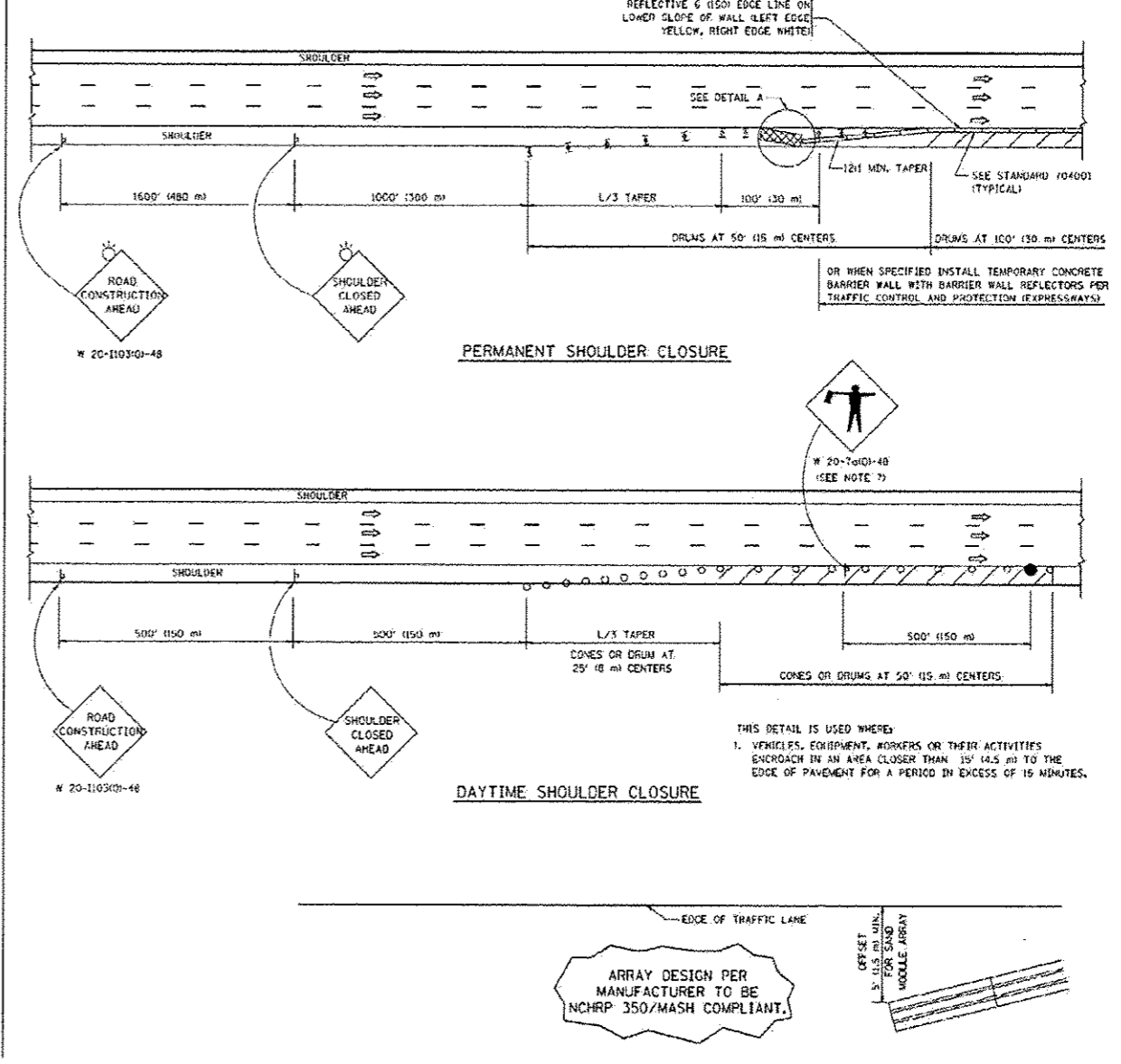
- ACTIVE WORK AREA
- SIGN ON PORTABLE OR PERMANENT SUPPORT
- FLAGGER WITH CONTROL SIGN
- TYPE II BARRICADE OR DRUM WITH STEADY BURN MONO-DIRECTIONAL LIGHT
- CONE, DRUM OR BARRICADE
- IMPACT ATTENUATOR OF TYPE AND TEST LEVEL SPECIFIED

GENERAL NOTES

1. THE "L" DISTANCE EQUALS:

SPEED LIMIT	FORMULAS
45 mph (80 km/h) OR GREATER	METRIC: $L = 0.85(W)(S)$ ENGLISH: $L = W(S)$
W = WIDTH OF OFFSET IN FEET (METERS)	S = NORMAL POSTED SPEED MPH (KM/H)
2. PLASTIC DRUMS WITH HIGH PERFORMANCE REFLECTIVE SHEETING AND STEADY BURNING LIGHTS ARE REQUIRED FOR ALL NIGHTTIME CLOSURES.
3. ALL SIGNS SHALL BE POST MOUNTED IF THE CLOSURE TIME EXCEEDS FOUR DAYS.
4. FLASHING LIGHTS SHALL BE USED DURING THE HOURS OF DARKNESS AND SHALL BE INSTALLED ABOVE THE FIRST TWO SETS OF SIGNS.

SHOULDER CLOSURE DETAILS



ARRAY DESIGN PER MANUFACTURER TO BE NCHRP 350/MASH COMPLIANT.

DETAIL "A" IMPACT ATTENUATOR, TEMPORARY (SEE NOTE 5)

5. THE IMPACT ATTENUATOR, TEMPORARY IS NOT REQUIRED WHEN THE TEMPORARY CONCRETE BARRIER WALL IS PROTECTED BY OR IS TIED INTO THE EXISTING GUARDRAIL, IF OFFSET IS LESS THAN 5 FEET USE NARROW USE TYPE DEVICE TO MEET NCHRP350/MASH.
 6. AUTHORIZATION FROM THE DISTRICT'S BUREAU OF TRAFFIC IS REQUIRED FOR ALL FREEWAY CLOSURES.
 7. THE FLAGGER AND FLAGGER SIGN ARE REQUIRED AT THE ABOVE WORK SITES WHEN:
 - a. FOUR OR MORE WORK VEHICLES ENTER THE TRAFFIC LANES IN A ONE HOUR PERIOD.
 - b. THE WORK ACTIVITY REQUIRES FREQUENT ENCRoACHMENT INTO THE LANE OPEN TO TRAFFIC. THE FLAGGER SHALL BE STATIONED APPROXIMATELY 100' (30 m) TO 200' (60 m) IN ADVANCE OF THE WORKERS.
- 0.12" MIN. WIDTH TANGENT SECTION
18" MIN. WIDTH CURVE SECTION

THIS DETAIL IS USED WHERE:
1. VEHICLES, EQUIPMENT, WORKERS OR THEIR ACTIVITIES ENCRoACH IN AN AREA CLOSER THAN 15' (4.5 m) TO THE EDGE OF PAVEMENT FOR A PERIOD IN EXCESS OF 15 MINUTES.

ALL DIMENSIONS ARE IN INCHES (MILLIMETERS) UNLESS OTHERWISE SHOWN.

FILE NAME: c:\pwworkspace\110000000\110000000.dgn	USER NAME: p.patel	DESIGNED: SN	REVISED: J.A.F. 12-06
		DRAWN: D.W.S.	REVISED: S.P.R. 01-07
		CHECKED: SN	REVISED: S.P.R. 12-09
		DATE: 11-96	REVISED: M.D. 06-13

STATE OF ILLINOIS
DEPARTMENT OF TRANSPORTATION

TRAFFIC CONTROL DETAILS FOR FREEWAY
SHOULDER CLOSURES AND PARTIAL RAMP CLOSURES
SCALE: NONE SHEET NO. 1 OF 1 SHEETS STA. TO STA.

F.A. RTE.	SECTION	COUNTY	TOTAL SHEETS	SHEET NO.
	TC-17			
FED. ROAD DIST. NO. 1 ILLINOIS FED. AID PROJECT			CONTRACT NO.	

Rev. 12-30-13

TABLES: 350, 351, 352, 353, 354, 355, 356, 357, 358, 359, 360, 361, 362, 363, 364, 365, 366, 367, 368, 369, 370, 371, 372, 373, 374, 375, 376, 377, 378, 379, 380, 381, 382, 383, 384, 385, 386, 387, 388, 389, 390, 391, 392, 393, 394, 395, 396, 397, 398, 399, 400, 401, 402, 403, 404, 405, 406, 407, 408, 409, 410, 411, 412, 413, 414, 415, 416, 417, 418, 419, 420, 421, 422, 423, 424, 425, 426, 427, 428, 429, 430, 431, 432, 433, 434, 435, 436, 437, 438, 439, 440, 441, 442, 443, 444, 445, 446, 447, 448, 449, 450, 451, 452, 453, 454, 455, 456, 457, 458, 459, 460, 461, 462, 463, 464, 465, 466, 467, 468, 469, 470, 471, 472, 473, 474, 475, 476, 477, 478, 479, 480, 481, 482, 483, 484, 485, 486, 487, 488, 489, 490, 491, 492, 493, 494, 495, 496, 497, 498, 499, 500, 501, 502, 503, 504, 505, 506, 507, 508, 509, 510, 511, 512, 513, 514, 515, 516, 517, 518, 519, 520, 521, 522, 523, 524, 525, 526, 527, 528, 529, 530, 531, 532, 533, 534, 535, 536, 537, 538, 539, 540, 541, 542, 543, 544, 545, 546, 547, 548, 549, 550, 551, 552, 553, 554, 555, 556, 557, 558, 559, 560, 561, 562, 563, 564, 565, 566, 567, 568, 569, 570, 571, 572, 573, 574, 575, 576, 577, 578, 579, 580, 581, 582, 583, 584, 585, 586, 587, 588, 589, 590, 591, 592, 593, 594, 595, 596, 597, 598, 599, 600, 601, 602, 603, 604, 605, 606, 607, 608, 609, 610, 611, 612, 613, 614, 615, 616, 617, 618, 619, 620, 621, 622, 623, 624, 625, 626, 627, 628, 629, 630, 631, 632, 633, 634, 635, 636, 637, 638, 639, 640, 641, 642, 643, 644, 645, 646, 647, 648, 649, 650, 651, 652, 653, 654, 655, 656, 657, 658, 659, 660, 661, 662, 663, 664, 665, 666, 667, 668, 669, 670, 671, 672, 673, 674, 675, 676, 677, 678, 679, 680, 681, 682, 683, 684, 685, 686, 687, 688, 689, 690, 691, 692, 693, 694, 695, 696, 697, 698, 699, 700, 701, 702, 703, 704, 705, 706, 707, 708, 709, 710, 711, 712, 713, 714, 715, 716, 717, 718, 719, 720, 721, 722, 723, 724, 725, 726, 727, 728, 729, 730, 731, 732, 733, 734, 735, 736, 737, 738, 739, 740, 741, 742, 743, 744, 745, 746, 747, 748, 749, 750, 751, 752, 753, 754, 755, 756, 757, 758, 759, 760, 761, 762, 763, 764, 765, 766, 767, 768, 769, 770, 771, 772, 773, 774, 775, 776, 777, 778, 779, 780, 781, 782, 783, 784, 785, 786, 787, 788, 789, 790, 791, 792, 793, 794, 795, 796, 797, 798, 799, 800, 801, 802, 803, 804, 805, 806, 807, 808, 809, 810, 811, 812, 813, 814, 815, 816, 817, 818, 819, 820, 821, 822, 823, 824, 825, 826, 827, 828, 829, 830, 831, 832, 833, 834, 835, 836, 837, 838, 839, 840, 841, 842, 843, 844, 845, 846, 847, 848, 849, 850, 851, 852, 853, 854, 855, 856, 857, 858, 859, 860, 861, 862, 863, 864, 865, 866, 867, 868, 869, 870, 871, 872, 873, 874, 875, 876, 877, 878, 879, 880, 881, 882, 883, 884, 885, 886, 887, 888, 889, 890, 891, 892, 893, 894, 895, 896, 897, 898, 899, 900, 901, 902, 903, 904, 905, 906, 907, 908, 909, 910, 911, 912, 913, 914, 915, 916, 917, 918, 919, 920, 921, 922, 923, 924, 925, 926, 927, 928, 929, 930, 931, 932, 933, 934, 935, 936, 937, 938, 939, 940, 941, 942, 943, 944, 945, 946, 947, 948, 949, 950, 951, 952, 953, 954, 955, 956, 957, 958, 959, 960, 961, 962, 963, 964, 965, 966, 967, 968, 969, 970, 971, 972, 973, 974, 975, 976, 977, 978, 979, 980, 981, 982, 983, 984, 985, 986, 987, 988, 989, 990, 991, 992, 993, 994, 995, 996, 997, 998, 999, 1000

PARSONS BRINCKERHOFF
200 West Monroe Street
Suite 900
Chicago, IL 60606

USER NAME: p.patel	DESIGNED: SN	REVISED:
FILE NAME:	DRAWN: DCP	REVISED:
PLOT SCALE: NONE	CHECKED: SN	REVISED:
PLOT DATE: 12/19/2013	DATE: 10/18/2013	REVISED:

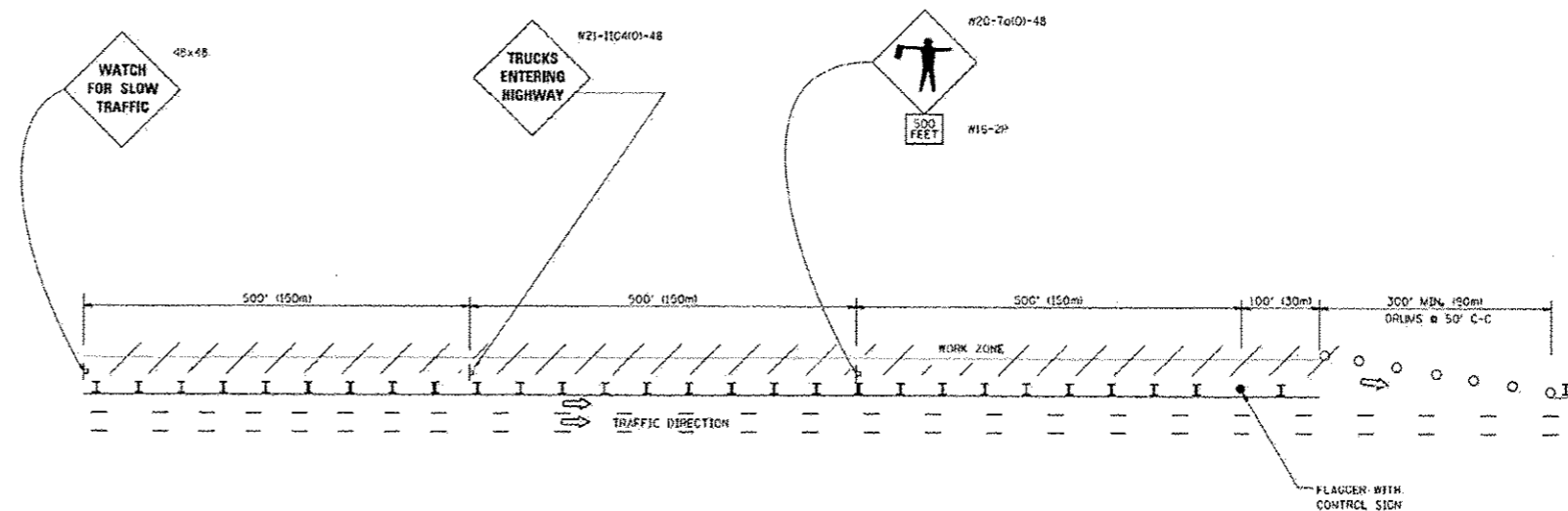
STATE OF ILLINOIS
DEPARTMENT OF TRANSPORTATION

CCTV SYSTEM, I-90/4 TO CONGRESS PARKWAY
PARTIAL RAMP OR SHOULDER CLOSURE
SCALE: NONE SHEET NO. OF SHEETS STA. 353+46.00 TO STA. 382+50.00

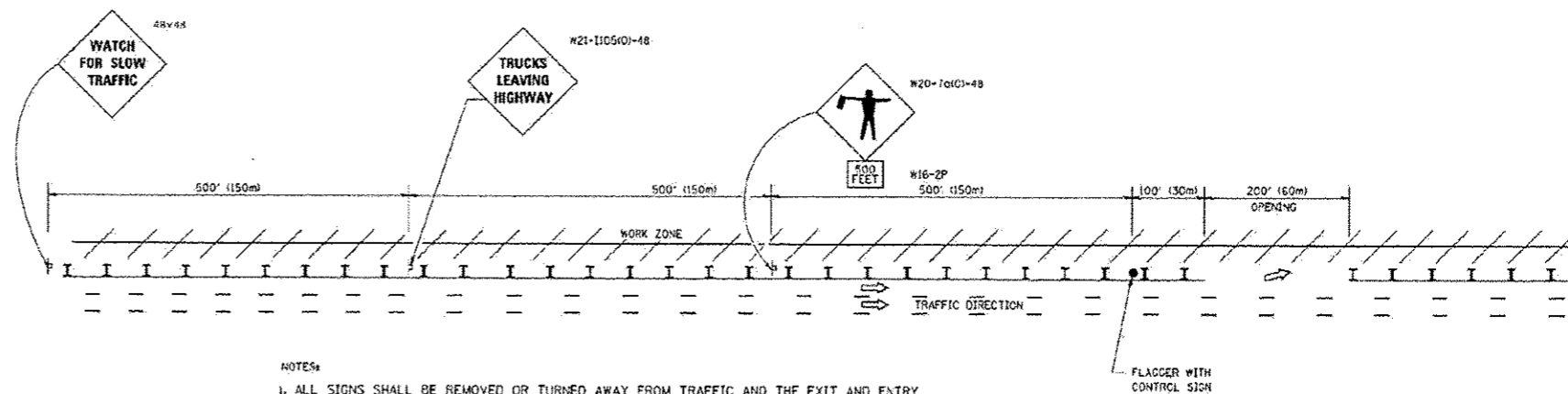
F.A. RTE.	SECTION	COUNTY	TOTAL SHEETS	SHEET NO.
389	2013-026-I	COOK	37	34
FED. ROAD DIST. NO. 1 ILLINOIS FED. AID PROJECT			CONTRACT NO. 60W49	

SIGNING FOR FLAGGING OPERATIONS AT WORK ZONE OPENINGS

WORK ZONE EXIT OPENING



WORK ZONE ENTRY OPENING



NOTES:

1. ALL SIGNS SHALL BE REMOVED OR TURNED AWAY FROM TRAFFIC AND THE EXIT AND ENTRY OPENINGS SHALL BE CLOSED WHEN THE FLAGGING OPERATION CEASES. NON OPERATING EQUIPMENT SHALL COMPLY WITH ARTICLE 701.1!
2. WORK ZONE OPENINGS SHALL BE A MINIMUM OF ONE HALF MILE APART AND A MINIMUM OF ONE QUARTER MILE FROM ALL ENTRANCE AND EXIT RAMP.
3. EXITING THE WORK ZONE AT ANY PLACE OTHER THAN AT A WORK ZONE EXIT OPENING WILL BE PROHIBITED.
4. ALL VEHICLES SHALL ENTER THE WORK ZONE AT ENTRY OPENINGS, USING THEIR TURN SIGNALS TO WARN MOTORISTS
5. FLAGGERS SHALL NOT STOP TRAFFIC OR DIRECT TRAFFIC INTO AN ADJACENT LANE.

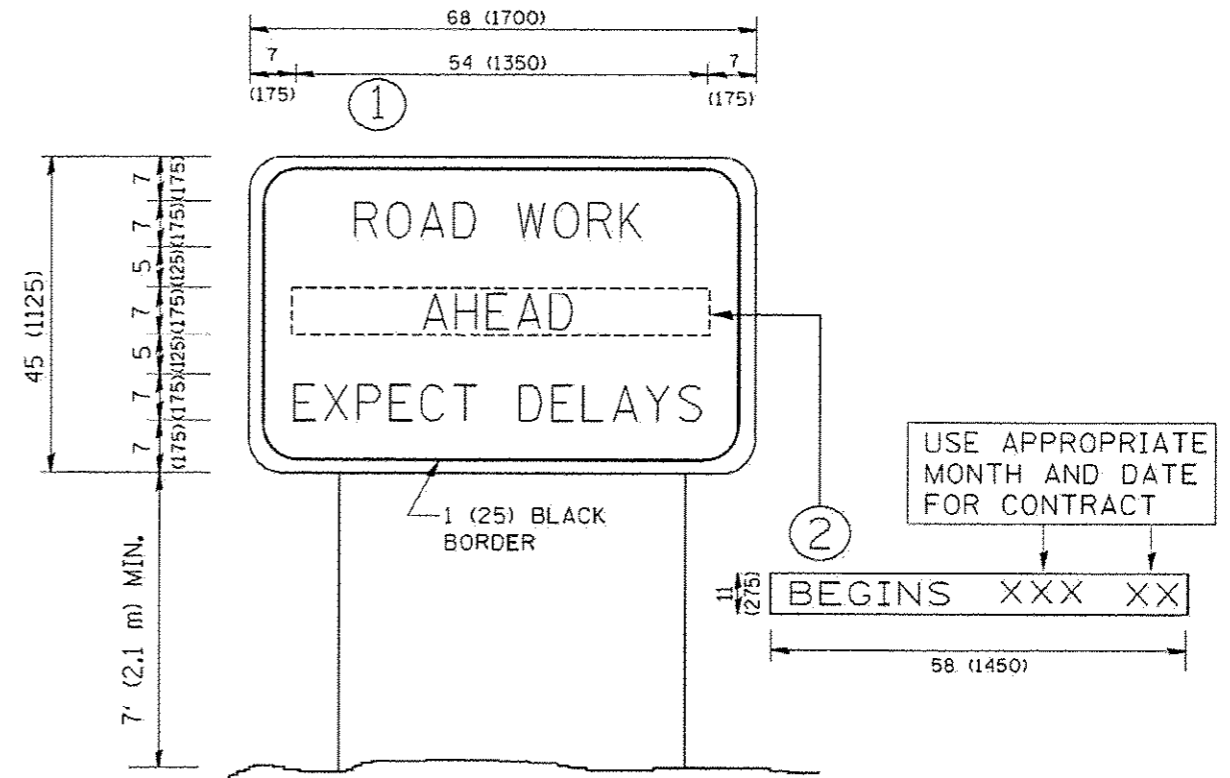
ALL DIMENSIONS ARE IN INCHES (MILLIMETERS) UNLESS OTHERWISE SHOWN

FILE NAME *	USER NAME *	DESIGNED -	REVISED -	STATE OF ILLINOIS DEPARTMENT OF TRANSPORTATION	FREWAY/EXPRESSWAY SIGNING FOR FLAGGING OPERATIONS AT WORK ZONE OPENINGS ON FREWAY/EXPRESSWAYS	F.A.P. RTE.	SECTION	COUNTY	TOTAL SHEETS	SHEET NO.
FILE NAME *	USER NAME *	DRAWN -	REVISED -			SCALE: NONE	SHEET NO. 1 OF 1 SHEETS	STA. TO STA.	TC-18	CONTRACT NO.
PLUT SCALE * NONE 1/2 IN.	PLUT DATE * 7/17/2013	CHECKED -	REVISED -							
		DATE -	REVISED -							

Rev. 12-30-13

T:\16043\BCTV\TC-18\60W49-sht_35-std-TC-18.dgn 13-DEC-2013 18:17

PARSONS BRINCKERHOFF 730 West Monroe Street Suite 900 Chicago, IL 60605	USER NAME *	DESIGNED -	REVISED -	STATE OF ILLINOIS DEPARTMENT OF TRANSPORTATION	CCTV SYSTEM I-90/94 TO CONGRESS PARKWAY SIGNING FOR FLAGGING OPERATIONS AT WORK ZONE	F.A.P. RTE.	SECTION	COUNTY	TOTAL SHEETS	SHEET NO.		
	FILE NAME *	DRAWN -	REVISED -			SCALE: NONE	SHEET NO. OF SHEETS	STA. 353+46.00 TO STA. 382+50.00	389	2013-026-1	COOK	37 35
	PLUT SCALE * NONE	CHECKED -	REVISED -									
	PLUT DATE * 12/19/2013	DATE -	REVISED -									



NOTES:

1. USE BLACK LETTERING ON ORANGE BACKGROUND.
2. ERECT SIGNS IN ADVANCE OF THE LOCATION FOR THE "ROAD CONSTRUCTION AHEAD" SIGN AT LOCATIONS AS DIRECTED BY THE ENGINEER.
3. ERECT SIGN ① WITH INSTALLED PANEL ② ONE WEEK PRIOR TO THE START OF CONSTRUCTION.
4. REMOVE PANEL ② SOON AFTER THE START OF CONSTRUCTION.
5. SEE SPECIAL PROVISION FOR "TEMPORARY INFORMATION SIGNING" FOR ADDITIONAL INFORMATION.
6. ONE SIGN ASSEMBLY EQUALS 25.70 SQ. FT. (2.3 SQ. M.)
7. SHALL BE PAID FOR AS TEMPORARY INFORMATION SIGNING.

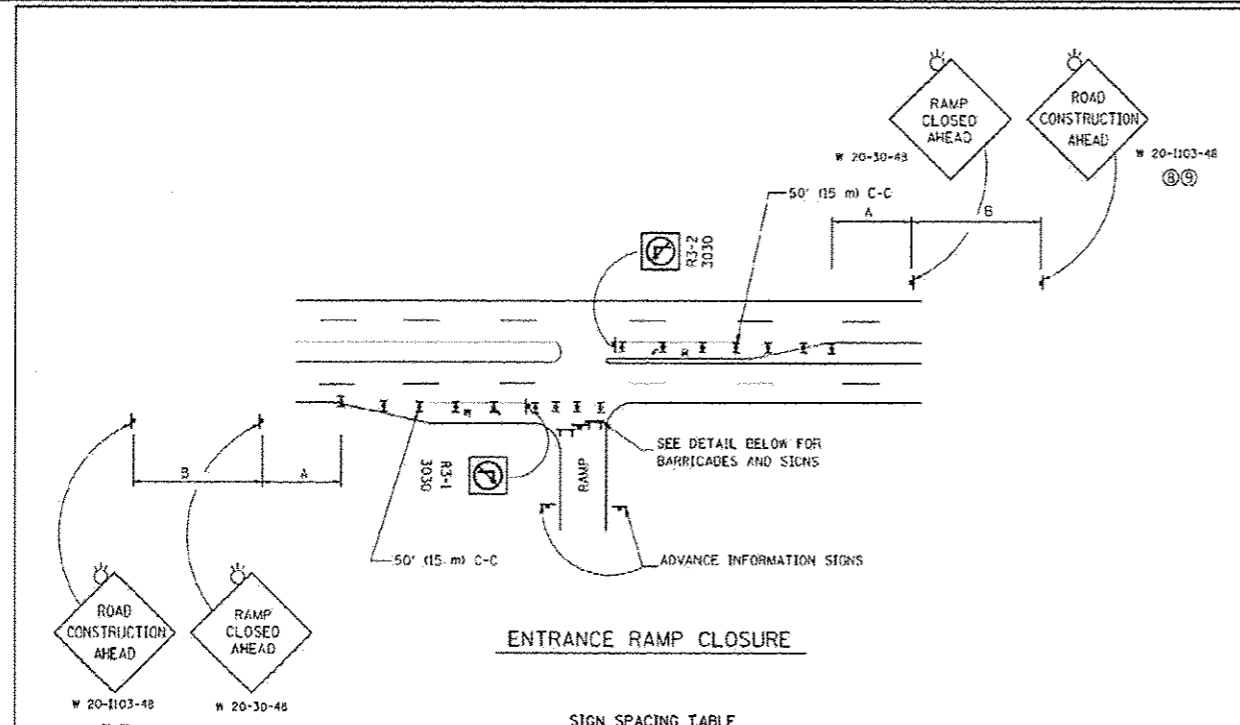
ALL DIMENSIONS ARE IN INCHES (MILLIMETERS) UNLESS OTHERWISE SHOWN.

FILE NAME W:\data\1222\34\1222.dgn	USER NAME j.patel	DESIGNED -	REVISOR R. MIRS 09-15-97	STATE OF ILLINOIS DEPARTMENT OF TRANSPORTATION	ARTERIAL ROAD INFORMATION SIGN		F.A.P. RTE.	SECTION	COUNTY	TOTAL SHEET SHEETS	SHEET NO.	
	PLT SCALE 1" = 10'-0" (1:120)	DRAWN -	REVISOR R. MIRS 12-11-97		SCALE NONE	SHEET NO.	OF	SHEETS	STA.	TO STA.	FED. ROAD DIST. NO.	ILLINOIS FED. AID PROJECT
	PLT DATE 12/19/2013	CHECKED -	REVISOR T. RAMMACHER 02-02-99								TC-22	CONTRACT NO.
		DATE 10/18/2013	REVISOR C. JUCIUS 01-31-07									

Rev. 12-30-13

PARSONS BRINCKERHOFF 230 West Monroe Street Suite 900 Chicago, IL 60606	USER NAME j.patel	DESIGNED SN	REVISOR	STATE OF ILLINOIS DEPARTMENT OF TRANSPORTATION	CCTV SYSTEM, I-90/94 TO CONGRESS PARKWAY ARTERIAL ROAD INFORMATION SIGN		F.A.P. RTE.	SECTION	COUNTY	TOTAL SHEET SHEETS	SHEET NO.			
	PLT SCALE NONE	DRAWN DCP	REVISOR		SCALE NONE	SHEET NO.	OF	SHEETS	STA.	353+46.00	TO STA.	382+50.00	FED. ROAD DIST. NO.	ILLINOIS FED. AID PROJECT
	PLT DATE 12/19/2013	CHECKED SN	REVISOR										37	36

T:\1864\34\CCTV\60W49-sht_37-std-TC-22.dgn
19-DEC-2013 18:18

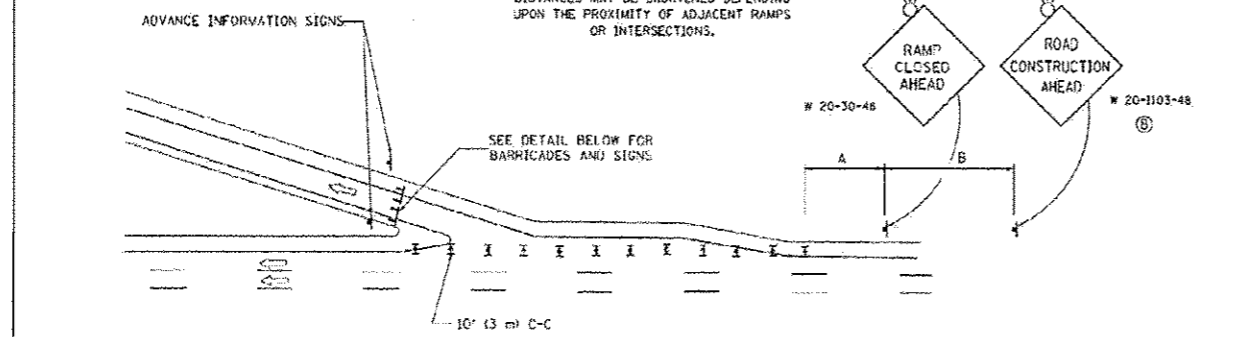


ENTRANCE RAMP CLOSURE

SIGN SPACING TABLE

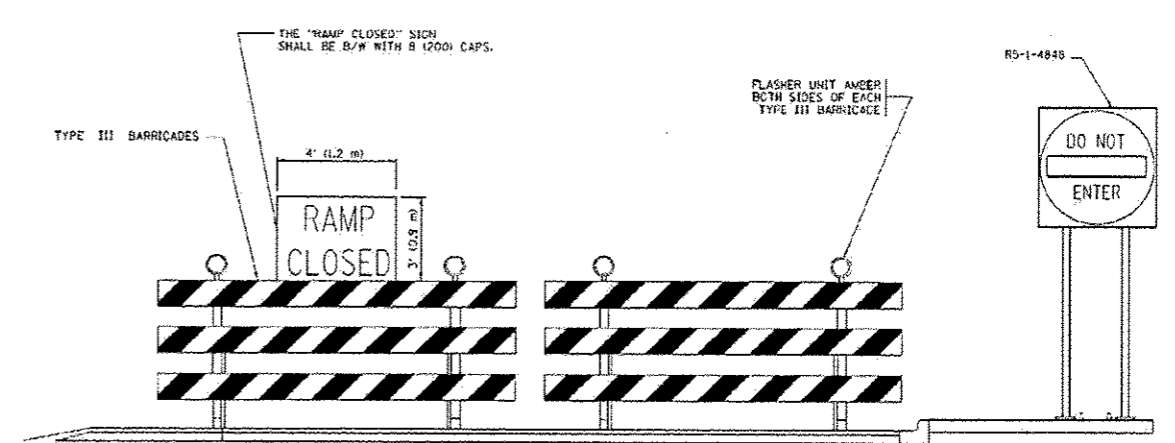
FACILITY	DISTANCE BETWEEN SIGNS	
	A	B
EXPRESSWAY ≥24 HOURS	1000' (300 m)	1500' (450 m)
EXPRESSWAY ≤24 HOURS	500' (150 m)	500' (150 m)
ARTERIAL 55 MPH	500' (150 m)	500' (150 m)
ARTERIAL 50-45 MPH	350' (100 m)	350' (100 m)
ARTERIAL <45 MPH	200' (60 m)	200' (60 m)

DISTANCES MAY BE SHORTENED DEPENDING UPON THE PROXIMITY OF ADJACENT RAMPS OR INTERSECTIONS.

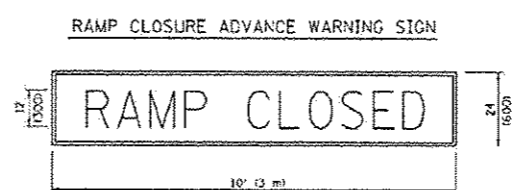


EXIT RAMP CLOSURE

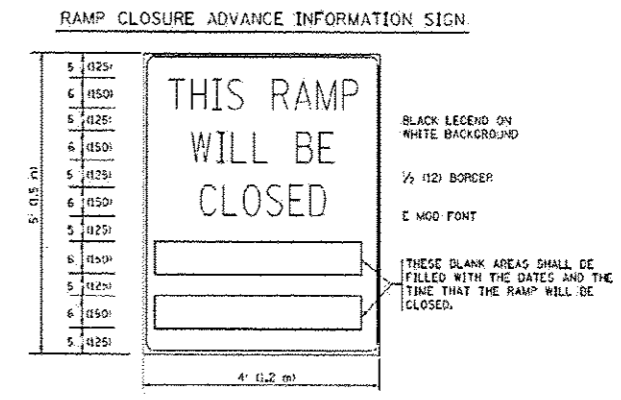
- SYMBOLS**
- ▬ TYPE II BARRICADE OR DRUM WITH STEADY BURN MONO-DIRECTIONAL LIGHT
 - ⚡ TYPE III BARRICADE WITH 2 FLASHING LIGHTS



DETAIL FOR REQUIRED BARRICADES & SIGNS



THESE SIGNS ARE REQUIRED ON ALL THE EXIT GUIDE SIGNS FOR EXIT RAMPS THAT WILL BE CLOSED FOR MORE THAN FOUR (4) CONSECUTIVE DAYS.



THESE SIGNS ARE REQUIRED ON BOTH SIDES OF THE RAMP, MINIMUM OF 1 WEEK IN ADVANCE OF THE CLOSURE. THESE SIGNS SHALL BE FABRICATED AND PAID FOR ACCORDING TO THE TEMPORARY INFORMATION SIGNING SPECIAL PROVISION.

GENERAL NOTES:

- ① CONES MAY BE SUBSTITUTED FOR DRUMS ON TYPE II BARRICADES DURING DAY OPERATIONS. CONES SHALL BE A MINIMUM OF 26 (700) HIGH.
- ② STEADY BURN LIGHTS WILL NOT BE REQUIRED FOR DAY OPERATIONS.
- ③ A FLAGGER SHALL BE POSITIONED AT EACH CLOSED RAMP THAT IS OPEN TO CONSTRUCTION VEHICLES, PRECEDED BY A W20-T FLAGGER WARNING SIGN.
- ④ ALL ROUTE MARKERS AND TRAILBLAZER ASSEMBLIES WHICH DIRECT MOTORISTS TO A CLOSED ENTRANCE RAMP SHALL BE COVERED WHEN THE RAMP IS CLOSED FOR MORE THAN FOUR (4) DAYS.
- ⑤ THE SIGNING AND BARRICADE WHICH IS REQUIRED BY THIS DETAIL SHALL BE INCLUDED IN THE COST OF TRAFFIC CONTROL AND PROTECTION (EXPRESSWAYS).
- ⑥ AUTHORIZATION FROM THE DISTRICT'S BUREAU OF TRAFFIC IS REQUIRED FOR ALL RAMP CLOSURES.
- ⑦ THE RAMP CLOSURE ADVANCE INFORMATION SIGNS SHALL BE ERECTED IF THE CLOSURE TIME EXCEEDS TWENTY-FOUR (24) HOURS, ADDITIONAL ADVANCE WARNING SIGNS ON EXIT GUIDE SIGNING WILL BE REQUIRED FOR EXIT RAMP CLOSURES THAT EXCEED FOUR (4) DAYS IN LENGTH.
- ⑧ ROAD CONSTRUCTION AHEAD SIGNS MAY BE OMITTED WHEN THIS DETAIL IS USED IN CONJUNCTION WITH OTHER TRAFFIC CONTROL THAT ALREADY INCLUDES A ROAD CONSTRUCTION AHEAD SIGN.
- ⑨ ARTERIAL ROAD CONSTRUCTION AHEAD SIGNS SHALL BE INSTALLED ON THE LEFT SIDE OF TRAFFIC IF THE MEDIAN IS MORE THAN 10 FT WIDE.

ALL DIMENSIONS ARE IN INCHES (MILLIMETERS) UNLESS OTHERWISE SHOWN.

FILE NAME	USER NAME	DESIGNED	REVISIONS
...	...	DWS	JAF 02-06
		DRAWN	SPR 01-07
		CHECKED	SPR 12-09
		DATE	MD 06-13

STATE OF ILLINOIS
DEPARTMENT OF TRANSPORTATION

ENTRANCE AND EXIT RAMP
CLOSURE DETAILS

F.A.P. RTE.	SECTION	COUNTY	TOTAL SHEETS	SHEET NO.
	TC-08			
FED. ROAD DIST. NO. 1 (ILLINOIS) FED. AID PROJECT				

FILE NAME	USER NAME	DESIGNED	REVISIONS
...	...	SN	
		DRAWN	DCP
		CHECKED	SN
		DATE	10/18/2013

STATE OF ILLINOIS
DEPARTMENT OF TRANSPORTATION

CCTV SYSTEM, I-90/94 TO CONGRESS PARKWAY
ENTRANCE AND EXIT RAMP CLOSURE DETAILS

F.A.P. RTE.	SECTION	COUNTY	TOTAL SHEETS	SHEET NO.
389	2013-026-1	COOK	37	36A
FED. ROAD DIST. NO. 1 (ILLINOIS) FED. AID PROJECT				

TR185843ARCTVRCADD@60M49-SPT-37-std-TC-8-3EA.dgn
 19-DEC-2013 10:18
 PARSONS BRINCKERHOFF
 230 West Monroe Street
 Suite 500
 Chicago, IL 60606

Added Sheet 12-30-13