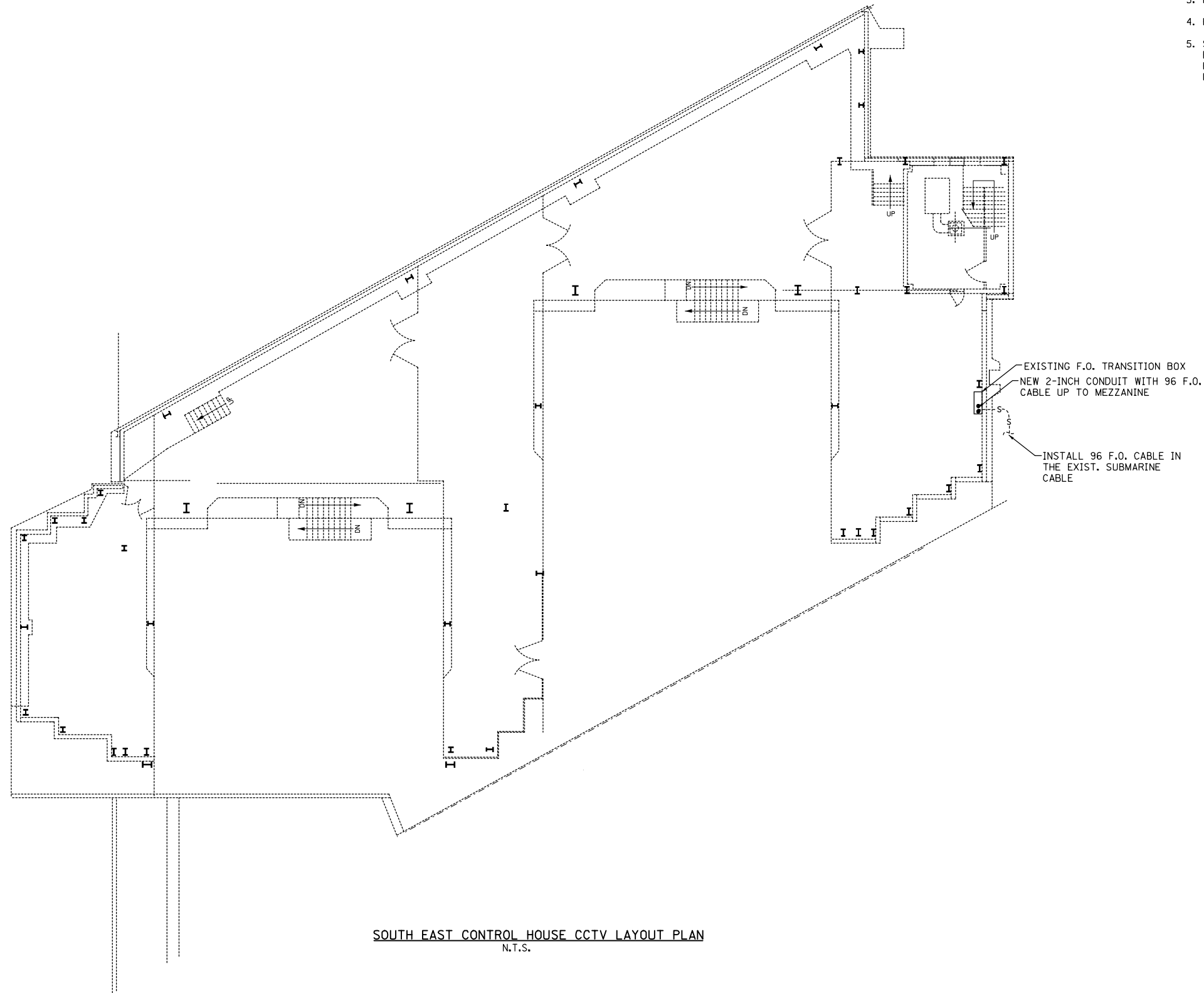




- NOTES:**
1. FOR GENERAL AND ELECTRICAL NOTES, SEE DWG'S 2, 3 & 4.
  2. FOR ELECTRICAL SYMBOLS AND ABBREVIATIONS, SEE DWG. 5
  3. FOR PANEL SCHEDULES, SEE DWG 22.
  4. FOR EQUIPMENT DESCRIPTIONS SEE ELECTRICAL SPECIFICATIONS.
  5. SURVEY EXISTING CIRCUITS IN THE SUBMARINE CABLE TUBE, REINSTALL AS REQUIRED WITH THE ADDITIONAL 96 STRAND F.O. CABLE. RETEST AND VERIFY EXISTING SYSTEM FUNCTIONALITY UPON COMPLETION OF WORK.



**SOUTH EAST CONTROL HOUSE CCTV LAYOUT PLAN**  
N.T.S.

T:\16843A\CCTV\Files from NY\17-2013\16843A-CCTV-E09-14-Est-DockLv-REV.10-16-2013.dgn  
 28-OCT-2013 13:46



USER NAME = pteid	DESIGNED - D. DRAKULICH	REVISED -
FILE NAME	DRAWN - E. MALUSEL	REVISED -
PLOT SCALE = NONE	CHECKED - S. STERN	REVISED -
PLOT DATE = 10/18/2013	DATE - 10/18/2013	REVISED -

**STATE OF ILLINOIS  
DEPARTMENT OF TRANSPORTATION**

**CCTV SYSTEM, I-90/94 TO CONGRESS PARKWAY  
EAST SIDE DOCK LEVEL**

SCALE: AS SHOWN SHEET NO. OF SHEETS STA. 353+46.00 TO STA. 382+50.00

F.A.P. RTE.	SECTION	COUNTY	TOTAL SHEETS	SHEET NO.
389	2013-026-I	COOK	37	14
				<b>CONTRACT NO. 60W49</b>
FED. ROAD DIST. NO. 1 (ILLINOIS) FED. AID PROJECT				