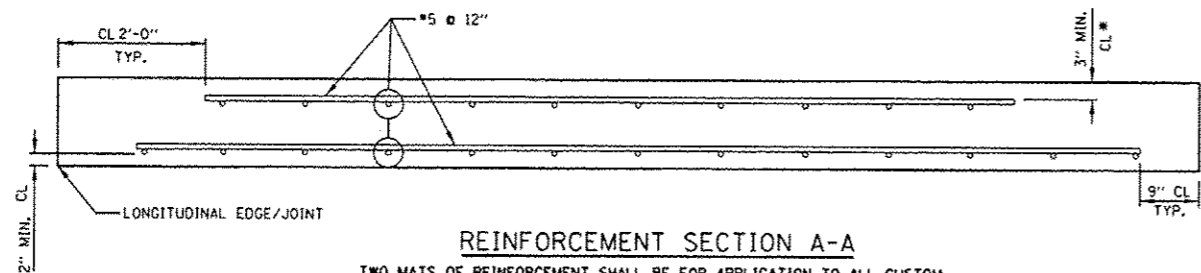
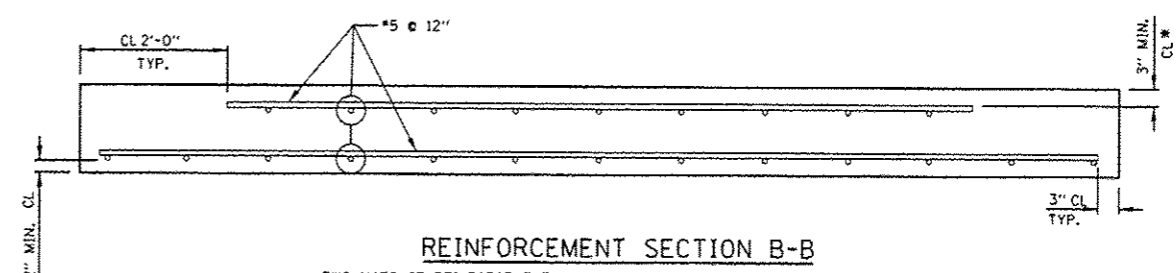


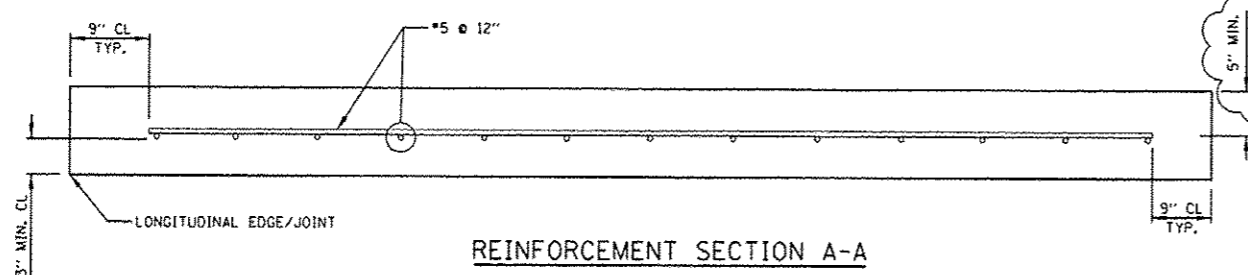
TYPICAL REINFORCEMENT DETAIL FOR STANDARD SLABS



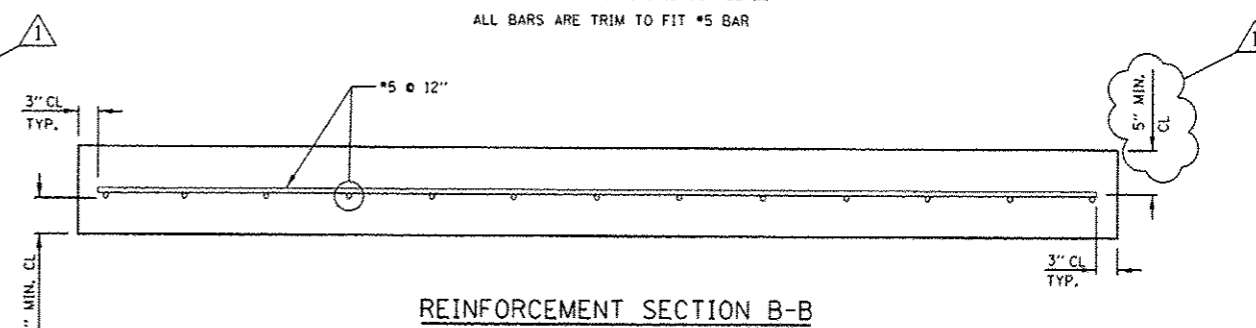
REINFORCEMENT SECTION A-A
 TWO MATS OF REINFORCEMENT SHALL BE FOR APPLICATION TO ALL CUSTOM SLABS GREATER THAN 6 FT. LONGITUDINAL LENGTH TO BE OPENED TO TRAFFIC BEFORE GROUTING IS COMPLETED
 ALL BARS ARE TRIM TO FIT #5 BAR
 SAW CUTS OFF LONGITUDINAL EDGES SHALL BE NO MORE THAN 6" OFF THE EDGES



REINFORCEMENT SECTION B-B
 TWO MATS OF REINFORCEMENT SHALL BE FOR APPLICATION TO ALL CUSTOM SLABS GREATER THAN 6 FT. LONGITUDINAL LENGTH TO BE OPENED TO TRAFFIC BEFORE GROUTING IS COMPLETED
 ALL BARS ARE TRIM TO FIT #5 BAR



REINFORCEMENT SECTION A-A
 ONE MAT OF REINFORCEMENT SHALL BE FOR APPLICATION TO ALL STANDARD SLABS AND FOR ANY CUSTOM SLABS GREATER THAN 6 FT. LONGITUDINAL LENGTH TO BE OPENED TO TRAFFIC ONLY AFTER GROUTING IS COMPLETED.
 ALL BARS ARE TRIM TO FIT #5 BAR
 SAW CUTS OFF LONGITUDINAL EDGES SHALL BE NO MORE THAN 6" OFF THE EDGES



REINFORCEMENT SECTION B-B
 ONE MAT OF REINFORCEMENT SHALL BE FOR APPLICATION TO ALL STANDARD SLABS AND FOR ANY CUSTOM SLABS GREATER THAN 6 FT. LONGITUDINAL LENGTH TO BE OPENED TO TRAFFIC ONLY AFTER GROUTING IS COMPLETED.
 ALL BARS ARE TRIM TO FIT #5 BAR

FILE NAME *	USER NAME = PancePL	DESIGNED - O. PATEL	REVISED - 1-9-14 PLP	STATE OF ILLINOIS DEPARTMENT OF TRANSPORTATION	PRECAST CONCRETE PAVEMENT SLABS			F.A.P. R.T.E.	SECTION	COUNTY	TOTAL SHEETS	SHEET NO.	
c:\p\work\pvidot\pancepl\108350268\Dist	ed.dgn	DRAWN -	REVISED -		SCALE: NONE	SHEET NO. 2 OF 19 SHEETS	STA.	TO STA.	339	116/R&R-3/PCC-PP	COOK	29	208
	PLOT SCALE = 1/8" = 1'-0"	CHECKED -	REVISED -					BD 57		CONTRACT NO. 60W56			
	PLOT DATE = 1/9/2014	DATE - 10-25-2013	REVISED -		<small>FED. ROAD DIST. NO. 1 ILLINOIS FED. AID PROJECT</small>								