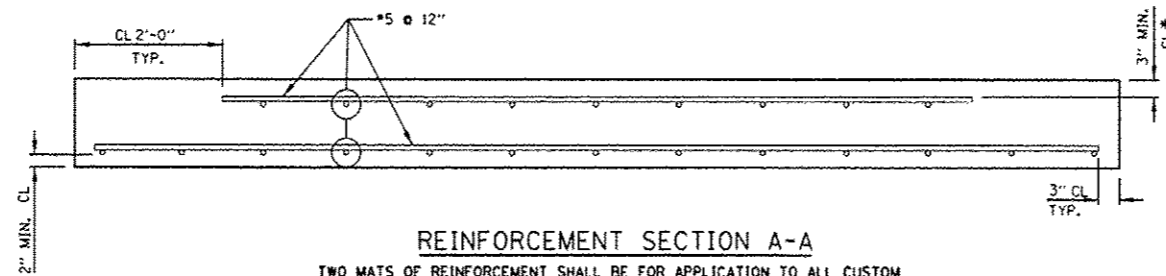
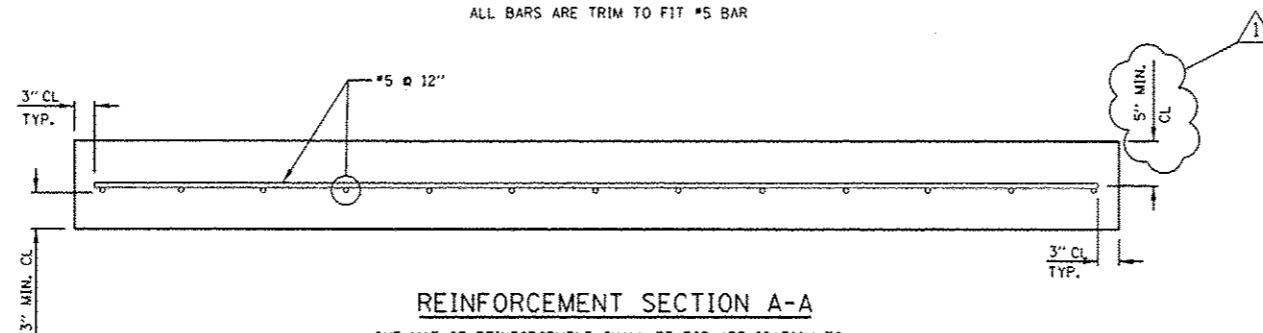


TYPICAL REINFORCEMENT DETAIL FOR CUSTOM SLABS



REINFORCEMENT SECTION A-A

TWO MATS OF REINFORCEMENT SHALL BE FOR APPLICATION TO ALL CUSTOM SLABS GREATER THAN 6 FT. LONGITUDINAL LENGTH TO BE OPENED TO TRAFFIC BEFORE GROUTING IS COMPLETED
ALL BARS ARE TRIM TO FIT #5 BAR



REINFORCEMENT SECTION A-A

ONE MAT OF REINFORCEMENT SHALL BE FOR APPLICATION TO ALL STANDARD SLABS AND FOR ANY CUSTOM SLABS GREATER THAN 6 FT. LONGITUDINAL LENGTH TO BE OPENED TO TRAFFIC ONLY AFTER GROUTING IS COMPLETED.
ALL BARS ARE TRIM TO FIT #5 BAR

NOTE:

FOR ALL CUSTOM SLABS OF TRAPEZOID SHAPES, REINFORCEMENT SHALL BE LAID OUT IN A PERPENDICULAR GRID PATTERN, NOT SKEWED.

FILE NAME *	USER NAME * PancePL	DESIGNED - O. PATEL	REVISED - 1-9-14 PLP	STATE OF ILLINOIS DEPARTMENT OF TRANSPORTATION	PRECAST CONCRETE PAVEMENT SLABS			F.A.P. RTE.	SECTION	COUNTY	TOTAL SHEETS	SHEET NO.	
c:\pe-work\pcedot\pancepl\0350260\01st	td.dgn	DRAWN -	REVISED -					339	116(R&R-3)PCC-PP	COOK	29	20C	
PLOT SCALE * 1/8" = 1'-0"	CHECKED -	REVISIED -	REVISIED -		SCALE: NONE			SHEET NO. 3 OF 19 SHEETS		STA.	TO STA.	CONTRACT NO. 60W56	
PLOT DATE * 1/9/2014	DATE - 10-25-2013	REVISIED -	REVISIED -		FED. ROAD DIST. NO. 1 ILLINOIS FED. AID PROJECT								