

INDEX OF SHEETS

STATE STANDARDS

GENERAL NOTES

SHEET NO.	DESCRIPTION
1	TITLE SHEET
2	INDEX OF SHEETS, STATE STANDARDS AND GENERAL NOTES
3-4	SUMMARY OF QUANTITIES
5	EXISTING AND PROPOSED TYPICAL SECTIONS
6-8	SCHEDULE OF QUANTITIES (PATCHING)
9-15	ROADWAY AND PAVEMENT MARKING PLANS
16-20	DETECTOR LOOP REPLACEMENT PLANS
20A-20S	PRECAST CONCRETE PAVEMENT SLAB DETAILS
21	CURB OR CURB AND GUTTER REMOVAL AND REPLACEMENT (BD-24)
22	TRAFFIC CONTROL AND PROTECTION FOR SIDE ROADS, INTERSECTIONS AND DRIVEWAYS (TC-10)
23	TYPICAL APPLICATIONS: RAISED REFLECTIVE PAVEMENT MARKERS (SNOW-PLOW RESISTANT) (TC-11)
24	DISTRICT ONE TYPICAL PAVEMENT MARKINGS (TC-13)
25	TRAFFIC CONTROL AND PROTECTION OF TURN BAYS (TO REMAIN OPEN TO TRAFFIC) (TC-14)
26	PAVEMENT MARKING LETTERS AND SYMBOLS FOR TRAFFIC STAGING (TC-16)
27	ARTERIAL ROAD INFORMATION SIGN (TC-22)
28	STANDARD TRAFFIC SIGNAL DESIGN DETAILS (TS-05, SHEET 1 OF 6)
29	DETECTOR LOOP INSTALLATION DETAIL FOR ROADWAY RESURFACING (TS-07)

STANDARD NO.	DESCRIPTION
000001-06	TYPICAL SYMBOLS, ABBREVIATIONS AND PATTERNS
420001-07	PAVEMENT JOINTS
420701-02	PAVEMENT FABRIC
442101-07	CLASS B PATCHES
604091-02	FRAME AND GRATE TYPE 24
606001-05	CONCRETE CURB TYPE B AND COMBINATION CONCRETE CURB AND GUTTER
701101-04	OFF-RD OPERATIONS, MULTILANE, 15'(4.5 m) TO 24'(600mm) FROM PAVEMENT EDGE
701421-06	LANE CLOSURE, MULTILANE, DAY OPERATIONS ONLY, FOR SPEEDS ≥ 45 MPH TO 55 MPH
701426-06	LANE CLOSURE, MULTILANE, INTERMITTENT OR MOVING OPERATIONS
701701-09	URBAN LANE CLOSURE, MULTILANE INTERSECTION
701901-03	TRAFFIC CONTROL DEVICES

BEFORE STARTING ANY EXCAVATION, THE CONTRACTOR SHALL CALL "JULIE" AT (800) 892-0123 OR 811 FOR FIELD LOCATIONS OF BURIED ELECTRIC, TELEPHONE AND GAS FACILITIES. (48 HOUR NOTIFICATION REQUIRED)

THE CONTRACTOR WILL NOT BE ALLOWED TO SET UP A YARD OR FIELD OFFICE ON STATE (OR TOLLWAY) PROPERTY WITHOUT WRITTEN PERMISSION FROM THE DEPARTMENT (OR ISTHA)

BEFORE BEGINNING ANY WORK, THE CONTRACTOR SHALL RETAIN AND RECORD FOR FUTURE REFERENCE, ALL EXISTING PAVEMENT MARKING LINES (AND RAISED REFLECTIVE PAVEMENT MARKERS) IN ORDER THAT THESE LOCATIONS CAN BE RE-ESTABLISHED FOR STRIPING. EXACT LOCATIONS OF ALL PAVEMENT MARKINGS SHALL BE AS DIRECTED BY THE ENGINEER.

ALL FINAL PAVEMENT PATCHING LOCATIONS AND SIZES SHALL BE DETERMINED IN THE FIELD BY THE ENGINEER.

THE CONTRACTOR SHALL CONTACT THE DISTRICT ONE TRAFFIC CONTROL SUPERVISOR AT (847) 705-4470 A MINIMUM OF 72 HOURS IN ADVANCE OF BEGINNING WORK.

THE RESIDENT ENGINEER SHALL CONTACT MR. WALLY CZARNY, AREA TRAFFIC FIELD ENGINEER AT (847) 715-8419 MINIMUM OF TWO (2) WEEKS PRIOR TO PLACEMENT OF PERMANENT PAVEMENT MARKINGS.

DOUBLE LANE MARKERS ARE TO BE USED AS SHOWN ON THE DISTRICT ONE DETAIL "TYPICAL APPLICATIONS - RAISED REFLECTIVE PAVEMENT MARKERS (SNOW-PLOW RESISTANT)" SHOWN IN THE PLANS.


ANY DETECTOR LOOPS DAMAGED BY PCC PATCHING SHALL BE REPLACED IN KIND. IT SHALL BE THE RESPONSIBILITY OF THE CONTRACTOR TO QUANTIFY LOOP REPLACEMENTS NEEDED AND PROVIDE THE RESIDENT ENGINEER THIS INFORMATION PRIOR TO REMOVAL.

CLASS PP-3 CONCRETE IS TO BE USED FOR ALL CLASS B PATCHES AT LOCATIONS SHOWN IN THE PLANS AND AS DIRECTED BY THE ENGINEER.

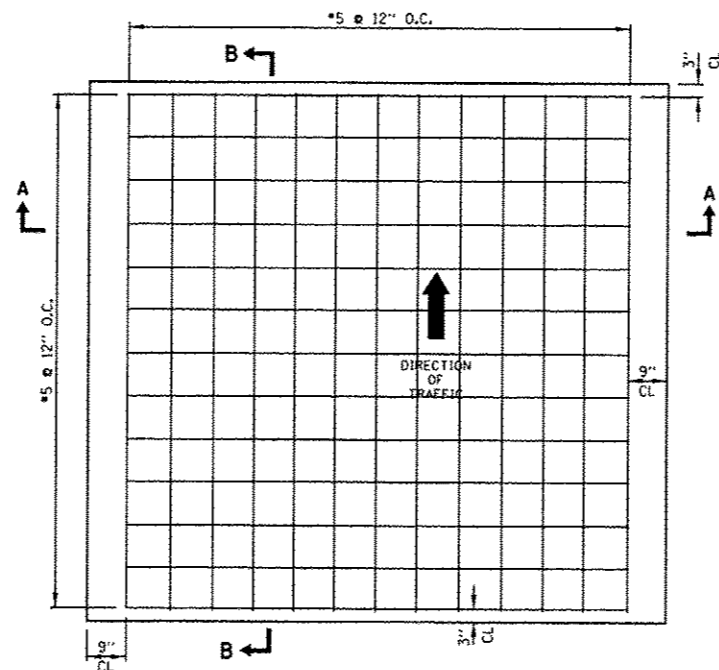
Rev 1-10-14

FILE NAME:	USER NAME: PencePL	DESIGNED - PLP	REVISED -	STATE OF ILLINOIS DEPARTMENT OF TRANSPORTATION	IL 62 (ALGONQUIN ROAD)-PENNY ROAD TO WEST OF ROSELLE ROAD INDEX OF SHEETS, STATE STANDARDS AND GENERAL NOTES	F.A.P. RTE.	SECTION	COUNTY	TOTAL SHEETS	SHEET NO.
c:\pwork\widet\pencepl\0350260\0132\13-shit-plan.dgn	DRAWN - PLP	REVISIED -	339			1161R&R-31PCC-PP	COOK	29	2	
Default	PLOT SCALE: 100.0000' / 1"	CHECKED -	REVISIED -			CONTRACT NO. 60W56		ILLINOIS FED. AID PROJECT		
	PLOT DATE: 11/8/2013	DATE -	REVISIED -			SCALE:	SHEET OF SHEETS	STA. TO STA.		

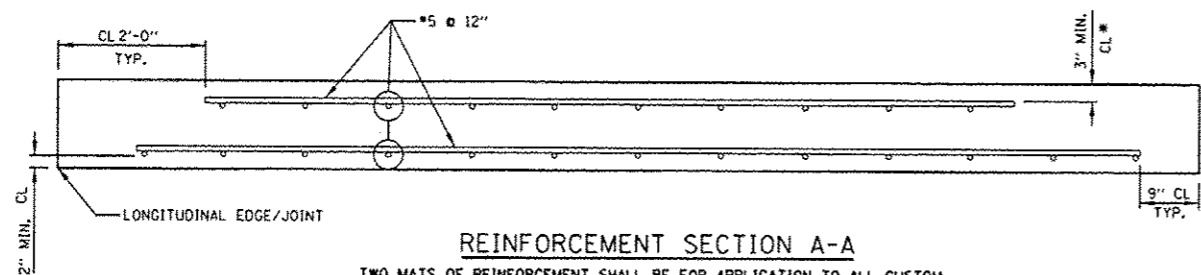
SUMMARY OF QUANTITIES				CONSTRUCTION TYPE CODE					SUMMARY OF QUANTITIES				CONSTRUCTION TYPE CODE				
CODE NO	ITEM	UNIT	TOTAL QUANTITIES	100% STATE					CODE NO	ITEM	UNIT	TOTAL QUANTITIES					
				0005													
* 78008240	POLYUREA PAVEMENT MARKING TYPE I - LINE 8"	FOOT	152	152													
* 78008250	POLYUREA PAVEMENT MARKING TYPE I - LINE 12"	FOOT	966	966													
* 78008270	POLYUREA PAVEMENT MARKING TYPE I - LINE 24"	FOOT	480	480													
* 78100100	RAISED REFLECTIVE PAVEMENT MARKER	EACH	1082	1082													
78300100	PAVEMENT MARKING REMOVAL	SO FT	292	292													
78300200	RAISED REFLECTIVE PAVEMENT MARKER REMOVAL	EACH	974	974													
* 88600600	DETECTOR LOOP REPLACEMENT	FOOT	730	730													
X0326767	PROFILE DIAMOND GRINDING CONCRETE PAVEMENT	SQ YD	96830	96830													
X5537800	STORM SEWERS TO BE CLEANED 12"	FOOT	600	600													
Z0004562	COMBINATION CONCRETE CURB AND GUTTER REMOVAL AND REPLACEMENT	FOOT	600	600													
Z0030850	TEMPORARY INFORMATION SIGNING	SO FT	51.4	51.4													
X0327695	PRECAST CONCRETE PAVEMENT SLABS 9 3/4"	SO FT	27328	27328													
X4423015	 Dowel Bars 1 1/2" Retrofit	 EACH	 6316	 6316													
* SPECIALTY ITEMS									* SPECIALTY ITEMS								

 Rev. 1-10-14

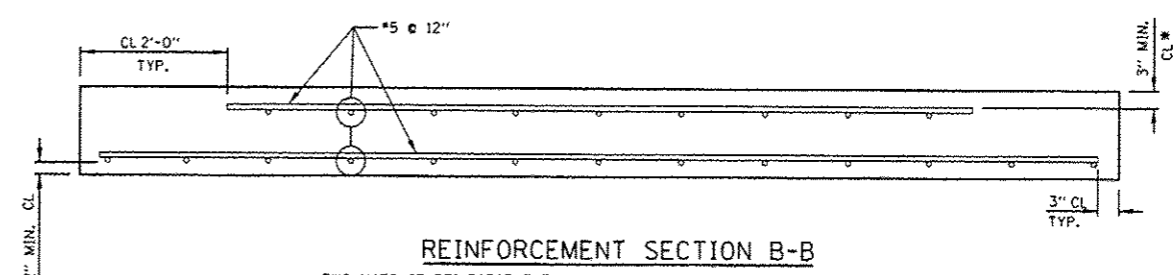
Rev.



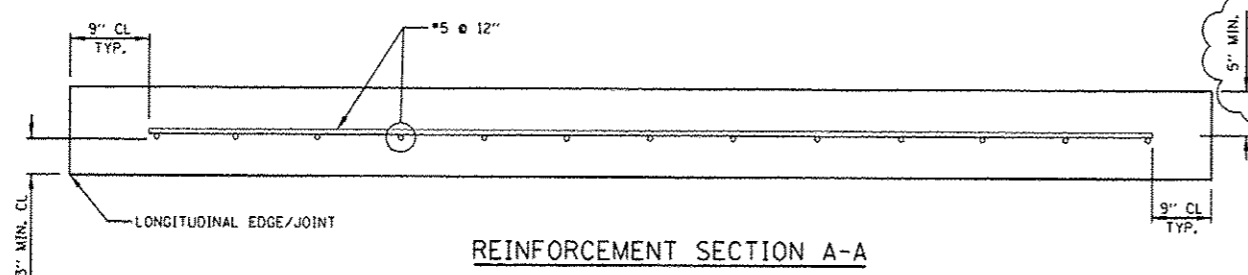
TYPICAL REINFORCEMENT DETAIL FOR STANDARD SLABS



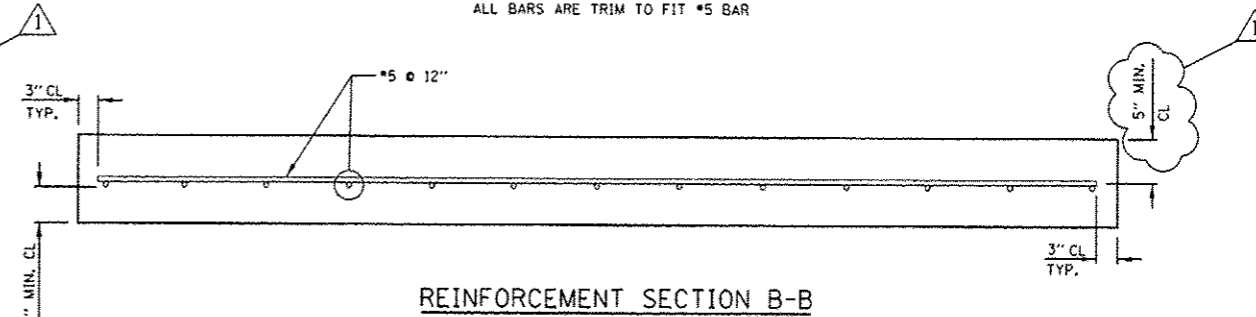
REINFORCEMENT SECTION A-A
 TWO MATS OF REINFORCEMENT SHALL BE FOR APPLICATION TO ALL CUSTOM SLABS GREATER THAN 6 FT. LONGITUDINAL LENGTH TO BE OPENED TO TRAFFIC BEFORE GROUTING IS COMPLETED
 ALL BARS ARE TRIM TO FIT #5 BAR
 SAW CUTS OFF LONGITUDINAL EDGES SHALL BE NO MORE THAN 6" OFF THE EDGES



REINFORCEMENT SECTION B-B
 TWO MATS OF REINFORCEMENT SHALL BE FOR APPLICATION TO ALL CUSTOM SLABS GREATER THAN 6 FT. LONGITUDINAL LENGTH TO BE OPENED TO TRAFFIC BEFORE GROUTING IS COMPLETED
 ALL BARS ARE TRIM TO FIT #5 BAR

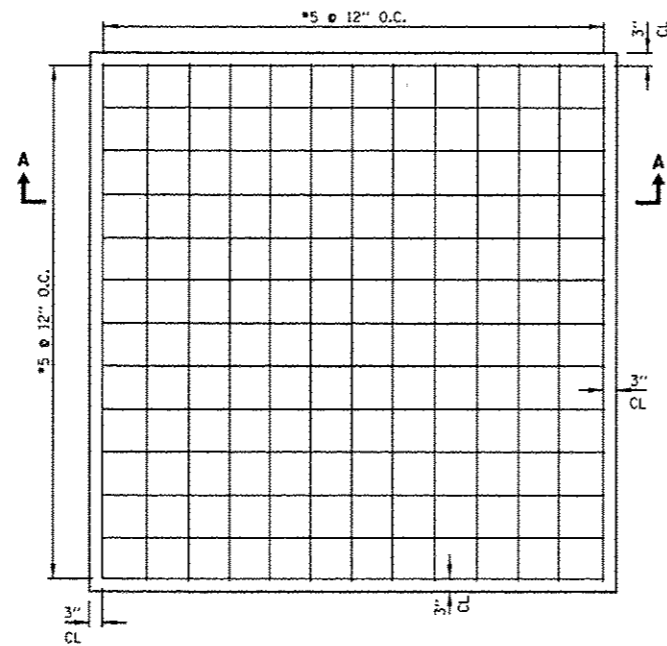


REINFORCEMENT SECTION A-A
 ONE MAT OF REINFORCEMENT SHALL BE FOR APPLICATION TO ALL STANDARD SLABS AND FOR ANY CUSTOM SLABS GREATER THAN 6 FT. LONGITUDINAL LENGTH TO BE OPENED TO TRAFFIC ONLY AFTER GROUTING IS COMPLETED.
 ALL BARS ARE TRIM TO FIT #5 BAR
 SAW CUTS OFF LONGITUDINAL EDGES SHALL BE NO MORE THAN 6" OFF THE EDGES

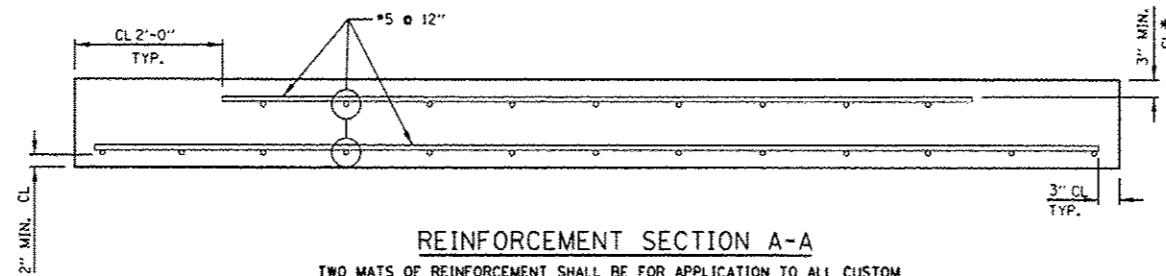


REINFORCEMENT SECTION B-B
 ONE MAT OF REINFORCEMENT SHALL BE FOR APPLICATION TO ALL STANDARD SLABS AND FOR ANY CUSTOM SLABS GREATER THAN 6 FT. LONGITUDINAL LENGTH TO BE OPENED TO TRAFFIC ONLY AFTER GROUTING IS COMPLETED.
 ALL BARS ARE TRIM TO FIT #5 BAR

FILE NAME : c:\p\work\p\p\dot\pncepl\108350268\Dist	USER NAME : PncePL ed.dgn	DESIGNED - D. PATEL	REVISED - 1-9-14 PLP	STATE OF ILLINOIS DEPARTMENT OF TRANSPORTATION	PRECAST CONCRETE PAVEMENT SLABS			F.A.P. RTE.	SECTION	COUNTY	TOTAL SHEETS	SHEET NO.	
	PLOT SCALE = 1/80,0000 1/ in.	DRAWN -	REVISED -		SCALE: NONE	SHEET NO. 2 OF 19 SHEETS	STA.	TO STA.	339	116/R&R-3/PCC-PP	COOK	29	208
	PLOT DATE = 1/9/2014	CHECKED -	REVISED -							BD 57			
		DATE - 10-25-2013	REVISED -								ILLINOIS	FED. AID PROJECT	
								CONTRACT NO. 60W56					

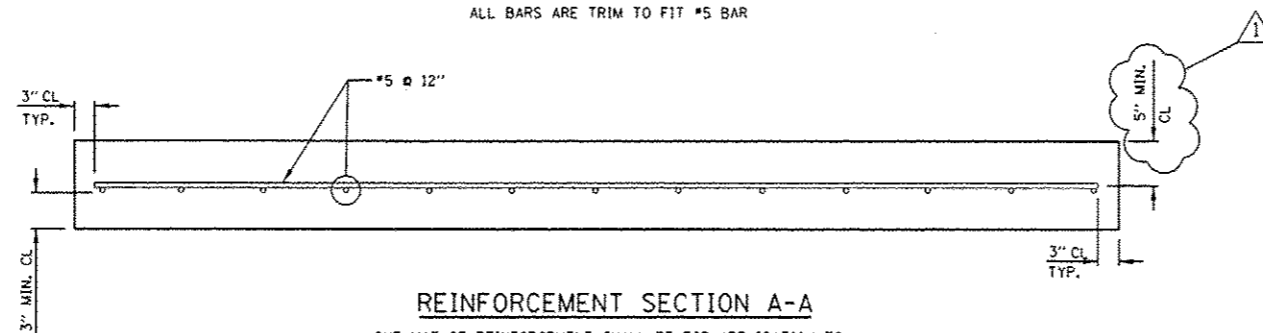


TYPICAL REINFORCEMENT DETAIL FOR CUSTOM SLABS



REINFORCEMENT SECTION A-A

TWO MATS OF REINFORCEMENT SHALL BE FOR APPLICATION TO ALL CUSTOM SLABS GREATER THAN 6 FT. LONGITUDINAL LENGTH TO BE OPENED TO TRAFFIC BEFORE GROUTING IS COMPLETED
ALL BARS ARE TRIM TO FIT #5 BAR



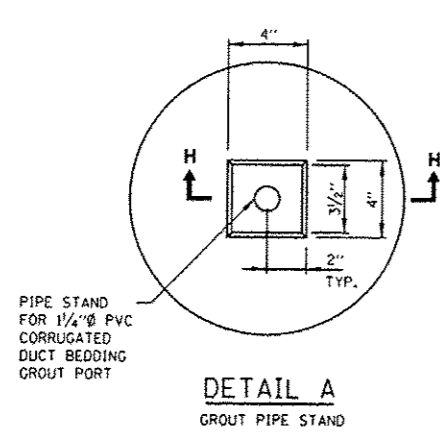
REINFORCEMENT SECTION A-A

ONE MAT OF REINFORCEMENT SHALL BE FOR APPLICATION TO ALL STANDARD SLABS AND FOR ANY CUSTOM SLABS GREATER THAN 6 FT. LONGITUDINAL LENGTH TO BE OPENED TO TRAFFIC ONLY AFTER GROUTING IS COMPLETED.
ALL BARS ARE TRIM TO FIT #5 BAR

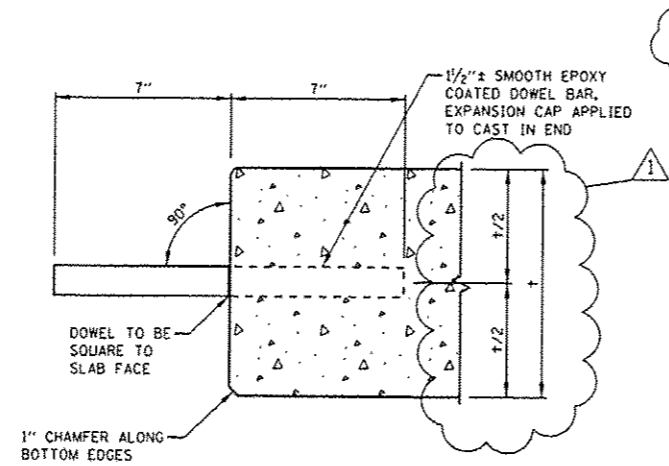
NOTE:

FOR ALL CUSTOM SLABS OF TRAPEZOID SHAPES, REINFORCEMENT SHALL BE LAID OUT IN A PERPENDICULAR GRID PATTERN, NOT SKEWED.

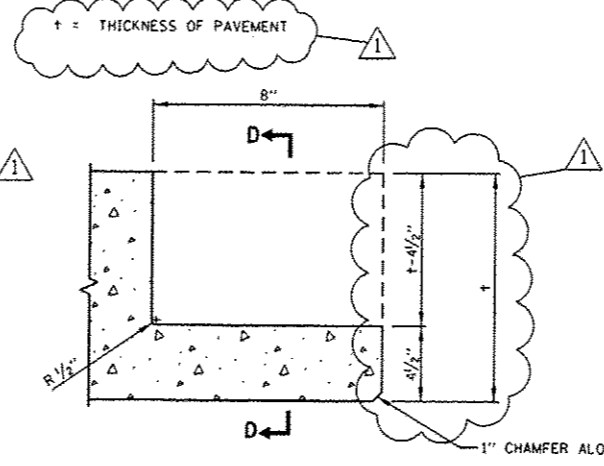
FILE NAME *	USER NAME * PancePL	DESIGNED - O. PATEL	REVISED - 1-9-14 PLP	STATE OF ILLINOIS DEPARTMENT OF TRANSPORTATION	PRECAST CONCRETE PAVEMENT SLABS			F.A.P. RTE.	SECTION	COUNTY	TOTAL SHEETS	SHEET NO.
c:\pe-work\pcedot\pancepl\0350260\01st	td.dgn	DRAWN -	REVISED -					339	116(R&R-3)PCC-PP	COOK	29	20C
PLOT SCALE * 1/8" = 1'-0"	CHECKED -	REVISIED -			BD 57			CONTRACT NO. 60W56				
PLOT DATE * 1/9/2014	DATE - 10-25-2013	REVISIED -			SCALE: NONE	SHEET NO. 3 OF 19 SHEETS	STA. TO STA.	FED. ROAD DIST. NO. 1 ILLINOIS FED. AID PROJECT				



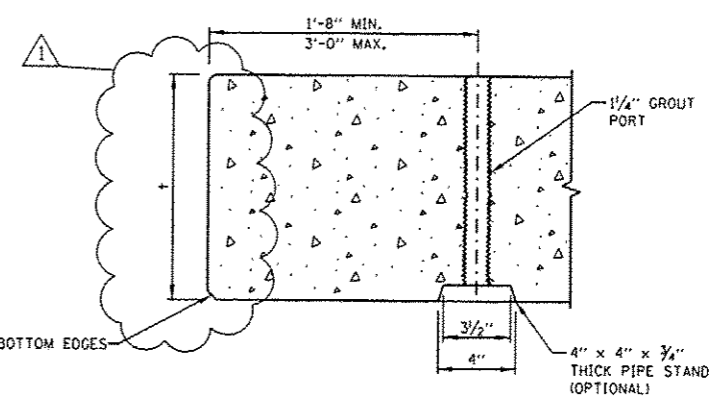
DETAIL A
GROUT PIPE STAND



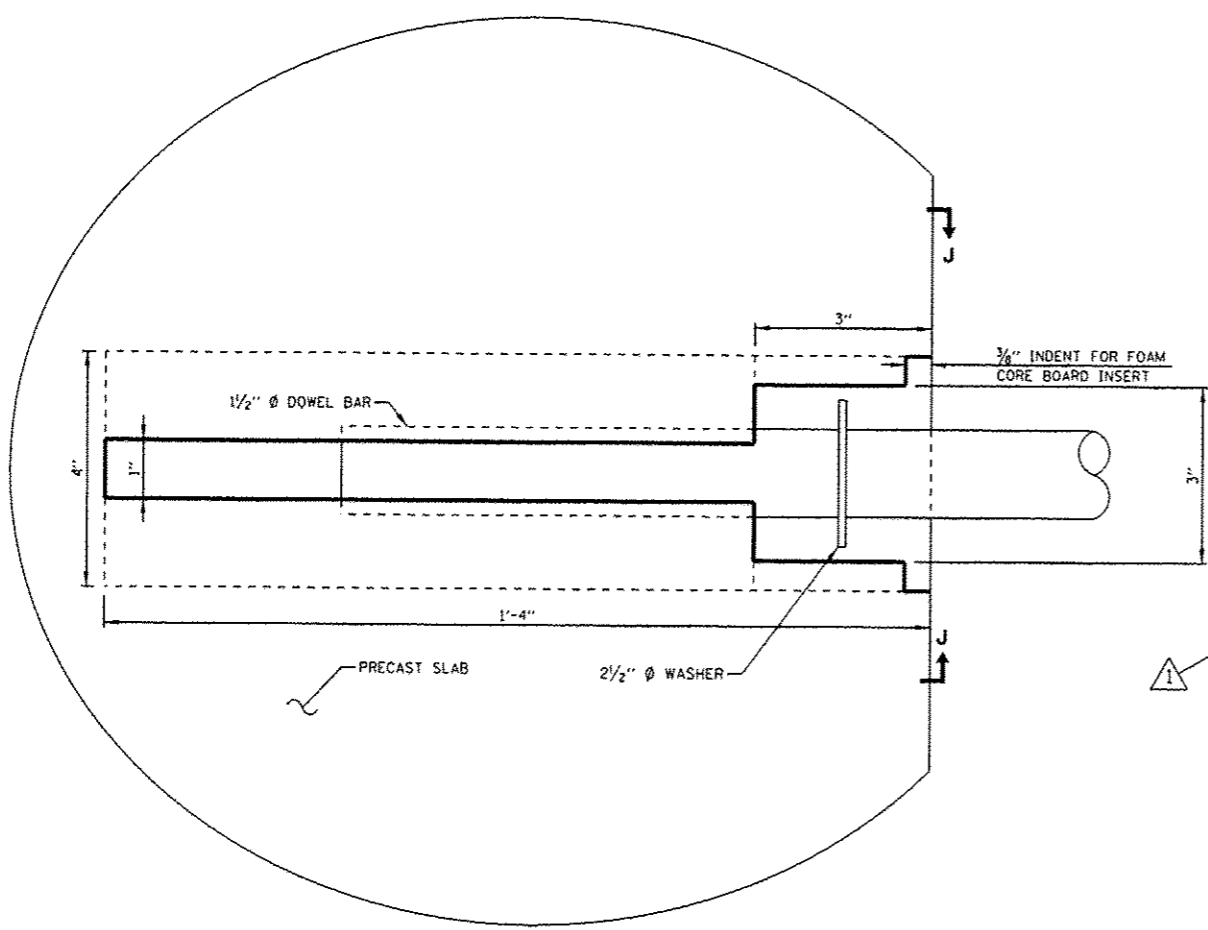
SECTION A-A
TRANSVERSE JOINT-DOWEL BAR (EMBEDDED INTO STANDARD PRECAST PAVEMENT SLAB FOR BOTH ISOLATED AND CONSECUTIVE PLACEMENT-TYP.)



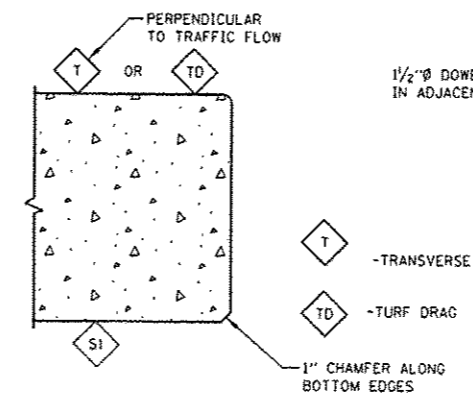
SECTION B-B
TRANSVERSE WIDE MOUTH OPEN SLOT DETAIL FOR CONSECUTIVE STANDARD SLABS



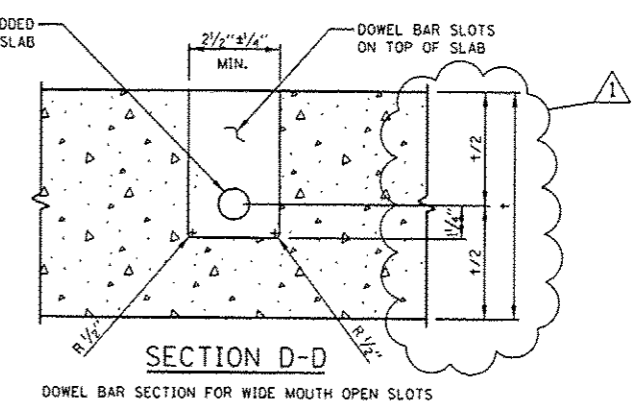
SECTION C-C
GROUT CHANNEL & PORT LOCATION



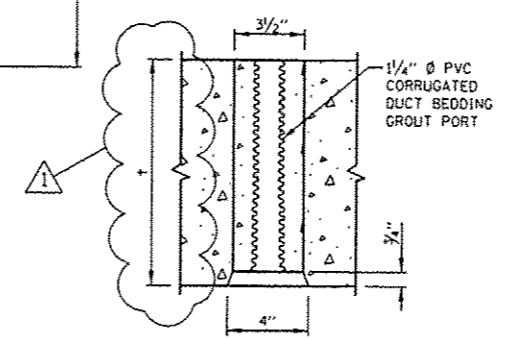
DETAIL B
TRANSVERSE NARROW MOUTH SLOT
DETAIL FOR ISOLATED SLABS



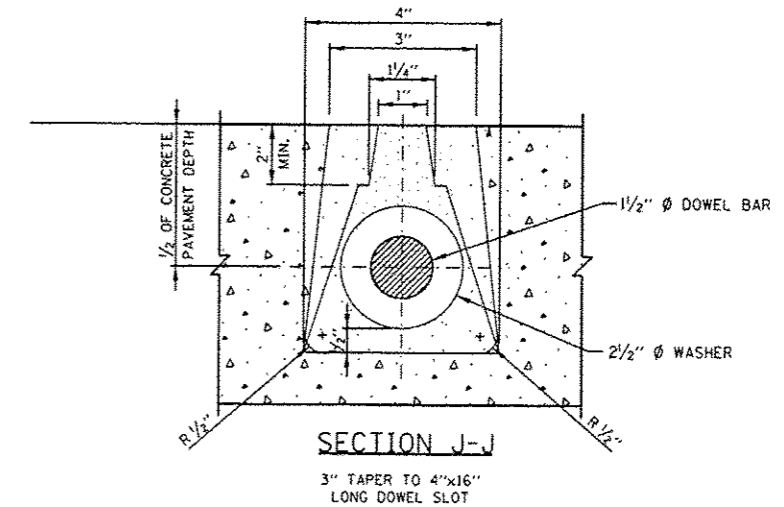
FINISH SCHEDULE



SECTION D-D
DOWEL BAR SECTION FOR WIDE MOUTH OPEN SLOTS



SECTION H-H
PIPE STAND ELEVATION



SECTION J-J
3" TAPER TO 4"x16" LONG DOWEL SLOT

FABRICATION DETAILS

FILE NAME: c:\p-work\pavdat\pnceapl\0350268\Dist	USER NAME: PnceaPL	DESIGNED: O. PATEL	REVISED: 1-9-14 PLP	STATE OF ILLINOIS DEPARTMENT OF TRANSPORTATION	PRECAST CONCRETE PAVEMENT SLABS			F.A.P. RTE. 339	SECTION 116R&R-31PCC-PP	COUNTY COOK	TOTAL SHEETS 29	SHEET NO. 20C
		DRAWN:	REVISED:		SCALE: NONE	SHEET NO. 7 OF 19 SHEETS	STA. TO STA.	BD 57		CONTRACT NO. 60W56		
		CHECKED:	REVISED:		FED. ROAD DIST. NO. 1 ILLINOIS FED. AID PROJECT							
		DATE: 10-25-2013	REVISED:									