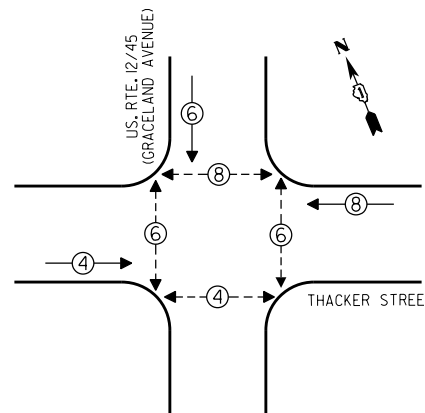
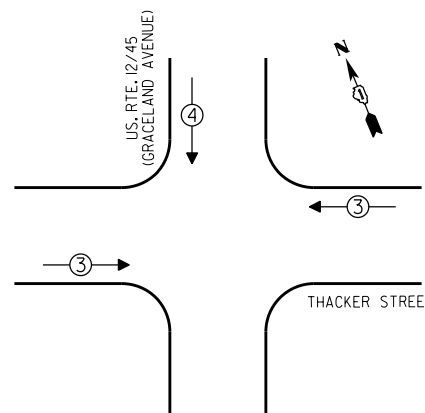


CONTROLLER SEQUENCE



**LEGEND**  
 [Symbol] SINGLE ENTRY PHASE  
 [Symbol] DUAL ENTRY PHASE  
 [Symbol] OVERLAP  
 [Symbol] PEDESTRIAN PHASE  
 \* NUMBER REFERS TO ASSOCIATED PHASE

EMERGENCY VEHICLE PREEMPTION SEQUENCE

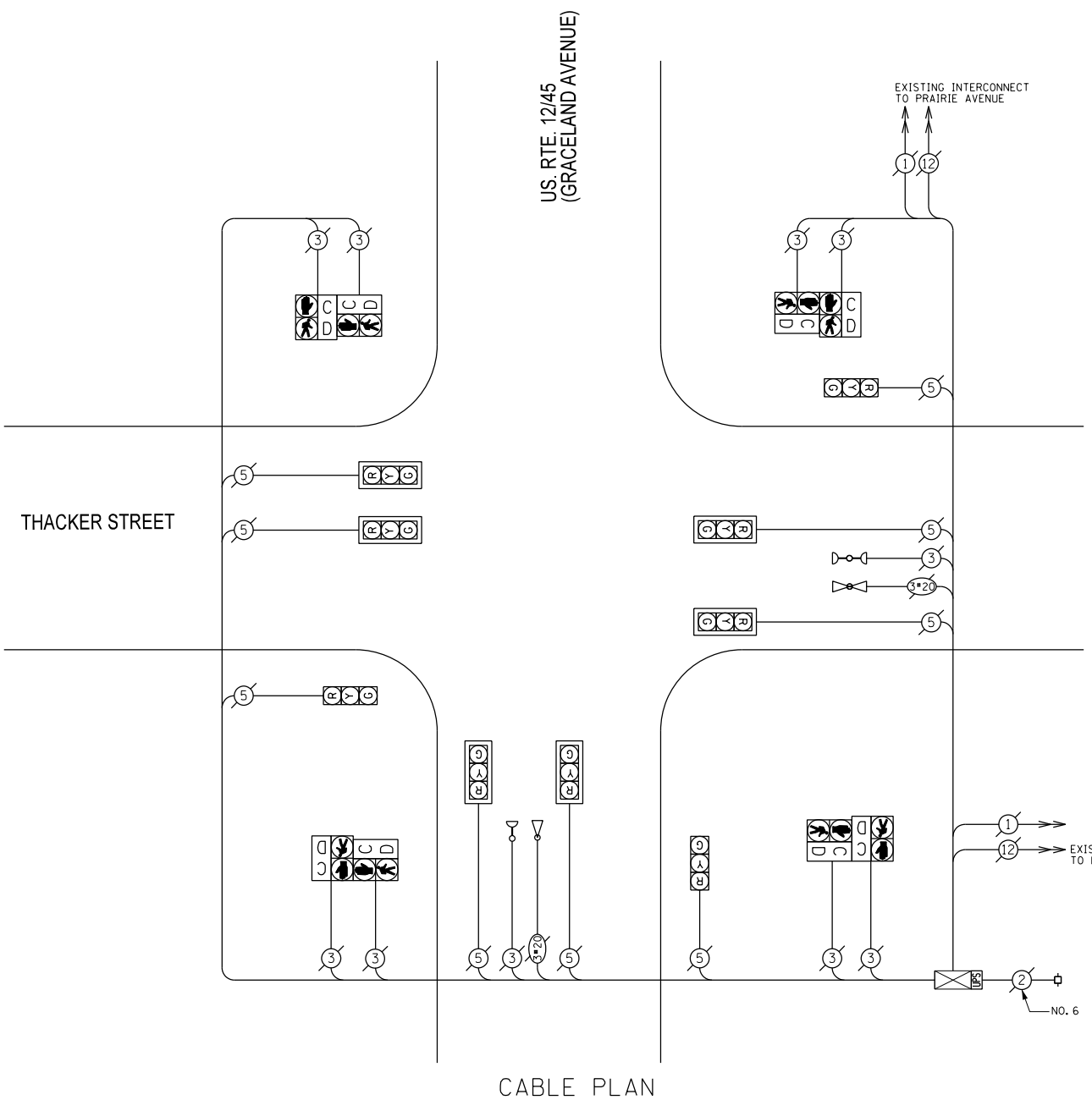


EMERGENCY VEHICLE PREEMPTORS		
EMERGENCY VEHICLE PREEMPTOR	3	4
MOVEMENT	↔	↓

I.D.O.T. TRAFFIC SIGNAL INSTALLATION ELECTRICAL SERVICE REQUIREMENTS				
TYPE	NO. OF LAMPS	WATTAGE		TOTAL WATTAGE
		INCAND	LED % OPERATIONS	
SIGNAL (RED)	9	17	0.50	76.50
(YELLOW)	9	25	0.25	56.25
(GREEN)	9	15	0.25	33.75
ARROW	12		0.10	
PED. SIGNAL	8	25	1.00	200.00
CONTROLLER	1	100	1.00	100.00
ILLUM. SIGN		25	0.05	
LUMINAIRE		250	0.50	
VIDEO SYSTEM		150	1.00	
FLASHER			0.50	
ENERGY COSTS TO:				TOTAL = 466.50

VILLAGE OF Des Plaines  
 1420 Miner Street  
 Des Plaines, ILLINOIS 60016

ENERGY SUPPLY - CONTACT: Dave Schacht  
 PHONE: (630) 437-2129  
 COMPANY:



CABLE PLAN

THE TRAFFIC SIGNAL CONTROL EQUIPMENT FOR THIS PROJECT SHALL BE "ECONOLITE".

SCHEDULE OF QUANTITIES

QUAN.	UNIT	ITEM
1	EACH	MAINTENANCE OF EXISTING TRAFFIC SIGNAL INSTALLATION
1	EACH	MODIFY EXISTING CONTROLLER CABINET
1	EACH	UNINTERRUPTIBLE POWER SUPPLY, SPECIAL

DESIGNED - JAM	REVISED -
DRAWN - JAM	REVISED -
CHECKED - LMM	REVISED -
DATE - 10-14-13	REVISED -

STATE OF ILLINOIS  
 DEPARTMENT OF TRANSPORTATION

SCHEDULE OF QUANTITIES, CABLE PLAN, PHASE DESIGNATION DIAGRAM, AND EMERGENCY VEHICLE PREEMPTION SEQUENCE, US. RTE. 12/45 (GRACELAND AVENUE) AT THACKER STREET

SCALE: NONE SHEET OF SHEETS STA. TO STA.

F.A. RTE.	SECTION	COUNTY	TOTAL SHEETS	SHEET NO.
VAR	2013-054TS	COOK	99	26
CONTRACT NO. 60X15				
ILLINOIS FED. AID PROJECT				

**SAM SCHWARTZ ENGINEERING**  
 3100 W. HIGGINS, STE. 100, HOFFMAN ESTATES, IL 60169