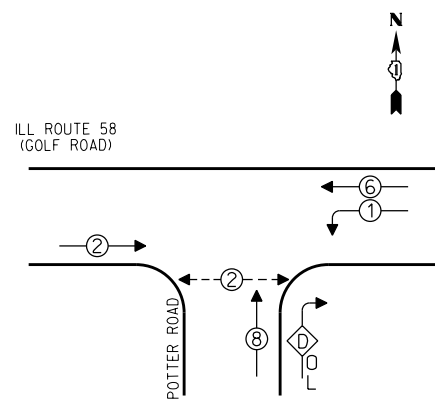


CONTROLLER SEQUENCE

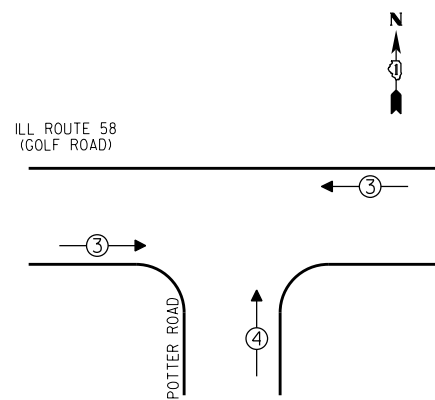


- LEGEND**
- SINGLE ENTRY PHASE
 - DUAL ENTRY PHASE
 - OVERLAP
 - PEDESTRIAN PHASE
 - * NUMBER REFERS TO ASSOCIATED PHASE

PHASE DESIGNATION DIAGRAM

| OVERLAP LETTER | PERMISSIVE PHASE | PROTECTED PHASE |
|----------------|------------------|-----------------|
| D | = 8 | + 1 |

EMERGENCY VEHICLE PREEMPTION SEQUENCE

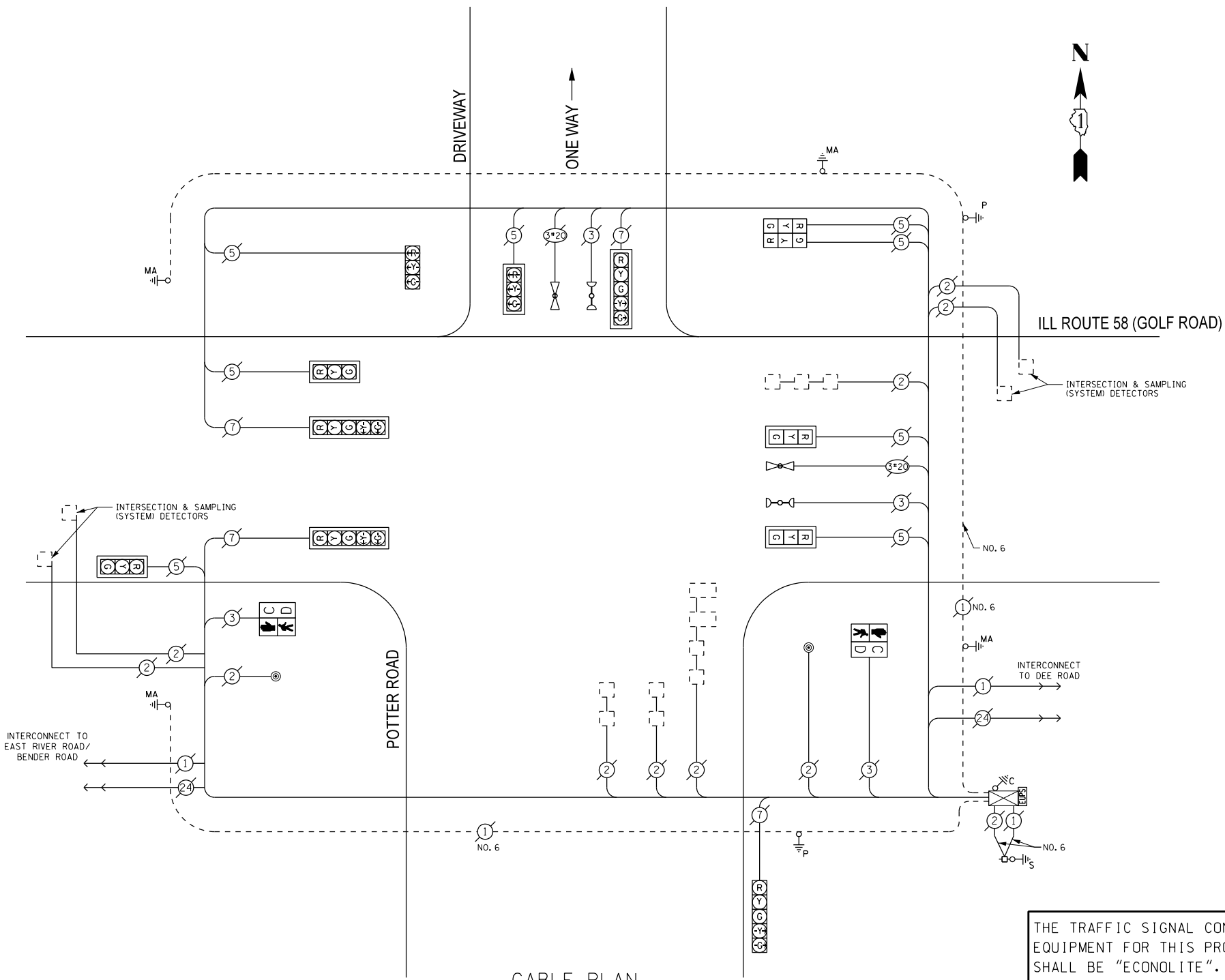


| EMERGENCY VEHICLE PREEMPTORS | | |
|------------------------------|----|---|
| EMERGENCY VEHICLE PREEMPTOR | 3 | 4 |
| MOVEMENT | ←→ | ↑ |

| I.D.O.T. TRAFFIC SIGNAL INSTALLATION ELECTRICAL SERVICE REQUIREMENTS | | | | |
|----------------------------------------------------------------------|--------------|---------|------------------|----------------|
| TYPE | NO. OF LAMPS | WATTAGE | | TOTAL WATTAGE |
| | | INCAND | LED % OPERATIONS | |
| SIGNAL (RED) | 12 | 17 | 0.50 | 102.00 |
| (YELLOW) | 12 | 25 | 0.25 | 75.00 |
| (GREEN) | 12 | 15 | 0.25 | 45.00 |
| ARROW | 8 | 12 | 0.10 | 9.60 |
| PED. SIGNAL | 2 | 25 | 1.00 | 50.00 |
| CONTROLLER | 1 | 100 | 1.00 | 100.00 |
| ILLUM. SIGN | | 25 | 0.05 | |
| LUMINAIRE | | 250 | 0.50 | |
| VIDEO SYSTEM | | 150 | 1.00 | |
| FLASHER | | | 0.50 | |
| ENERGY COSTS TO: | | | | TOTAL = 381.60 |

VILLAGE OF Des Plaines
1420 Miner Street
Des Plaines, ILLINOIS 60016

ENERGY SUPPLY - CONTACT: Dave Schacht
PHONE: (630) 437-2129
COMPANY:



CABLE PLAN

THE TRAFFIC SIGNAL CONTROL EQUIPMENT FOR THIS PROJECT SHALL BE "ECONOLITE".

REMOVE EXISTING TRAFFIC SIGNAL EQUIPMENT

THE FOLLOWING ITEMS SHALL BE REMOVED BY THE CONTRACTOR AND SHALL BE DISPOSED OF BY THEM OUTSIDE THE RIGHT-OF-WAY AT THEIR EXPENSE. THE SALVAGE VALUE OF THE REMOVED EQUIPMENT SHALL BE REFLECTED IN THE CONTRACT BID PRICE.

| QUANTITY | UNIT | DESCRIPTION |
|----------|------|--------------------------------|
| 2 | EACH | PEDESTRIAN SIGNAL HEAD, I-FACE |
| 2 | EACH | PEDESTRIAN PUSHBUTTON |

SCHEDULE OF QUANTITIES

| QUAN. | UNIT | ITEM |
|-------|------|---------------------------------------------------------------------------|
| 1 | EACH | MAINTENANCE OF EXISTING TRAFFIC SIGNAL INSTALLATION |
| 2 | EACH | PEDESTRIAN SIGNAL HEAD, LED, I-FACE, BRACKET MOUNTED WITH COUNTDOWN TIMER |
| 2 | EACH | PEDESTRIAN PUSH-BUTTON |
| 1 | EACH | REMOVE EXISTING TRAFFIC SIGNAL EQUIPMENT |

| | |
|-----------------|-----------|
| DESIGNED - JAM | REVISED - |
| DRAWN - JAM | REVISED - |
| CHECKED - LMM | REVISED - |
| DATE - 10-14-13 | REVISED - |

STATE OF ILLINOIS
DEPARTMENT OF TRANSPORTATION

SCHEDULE OF QUANTITIES, CABLE PLAN, PHASE DESIGNATION DIAGRAM, AND EMERGENCY VEHICLE PREEMPTION SEQUENCE,
ILL ROUTE 58 (GOLF RD) AT POTTER ROAD

SCALE: NONE SHEET OF SHEETS STA. TO STA.

| F.A. RTE. | SECTION | COUNTY | TOTAL SHEETS | SHEET NO. |
|---------------------------|------------|--------|--------------|-----------|
| VAR | 2013-054TS | COOK | 99 | 44 |
| CONTRACT NO. 60X15 | | | | |
| ILLINOIS FED. AID PROJECT | | | | |

SAM SCHWARTZ ENGINEERING
3100 W. HIGGINS, STE. 100, HOFFMAN ESTATES, IL 60169