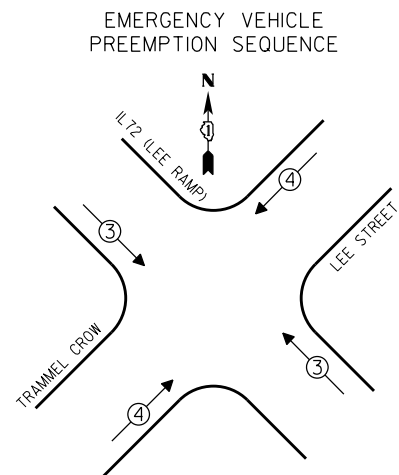


PHASE DESIGNATION DIAGRAM

- LEGEND**
- SINGLE ENTRY PHASE
 - DUAL ENTRY PHASE
 - OVERLAP
 - PEDESTRIAN PHASE
 - * NUMBER REFERS TO ASSOCIATED PHASE

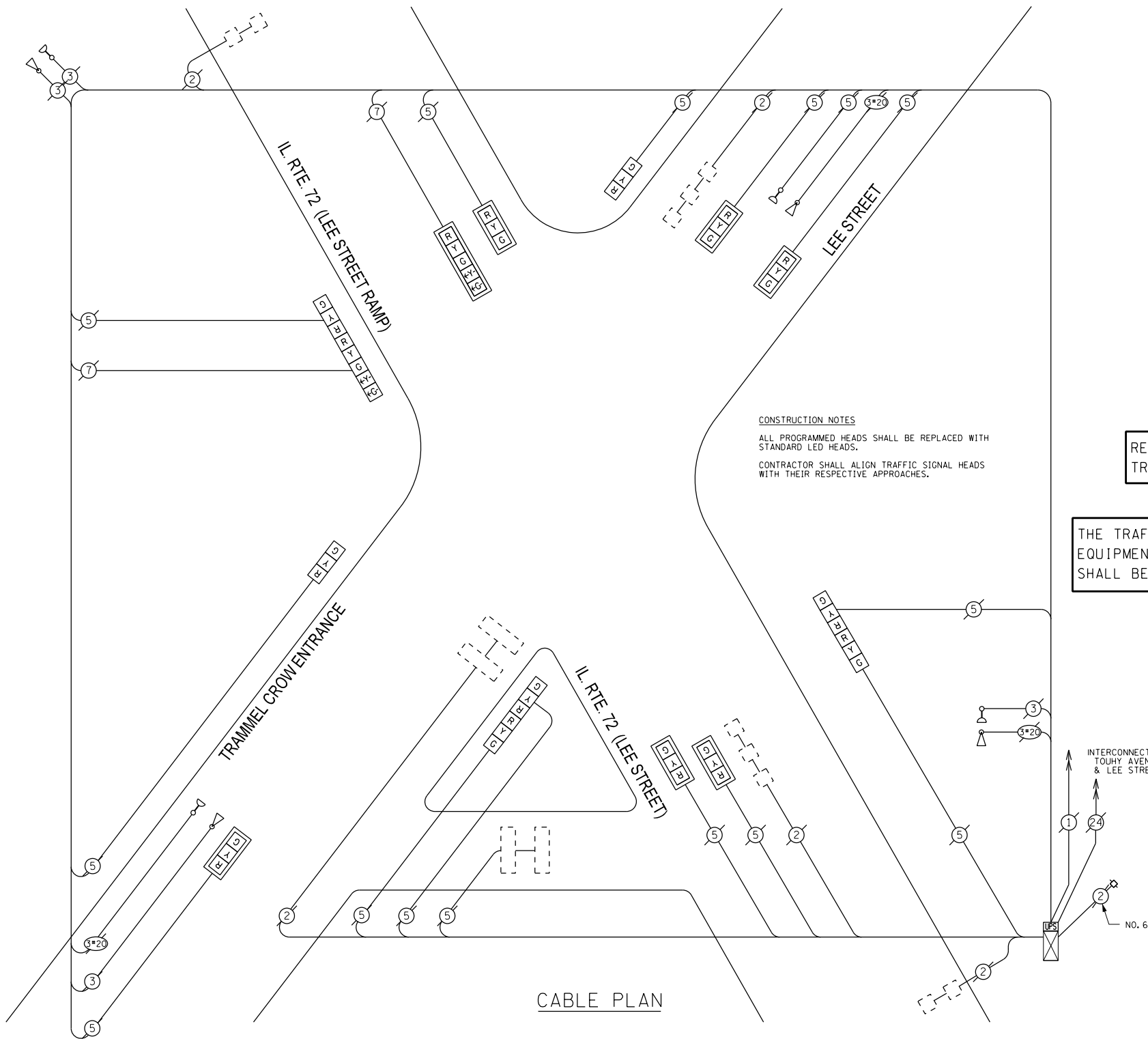


EMERGENCY VEHICLE PREEMPTORS		
EMERGENCY VEHICLE PREEMPTOR	3	4
MOVEMENT	↔	↔

I.D.O.T. TRAFFIC SIGNAL INSTALLATION ELECTRICAL SERVICE REQUIREMENTS				
TYPE	WATTAGE			TOTAL WATTAGE
	NO. OF LAMPS	INCAND	LED X % OPERATIONS	
SIGNAL (RED)	15	17	0.50	127.50
(YELLOW)	15	25	0.25	93.75
(GREEN)	15	15	0.25	56.25
ARROW	4	12	0.10	4.80
PED. SIGNAL		25	1.00	
CONTROLLER	1	100	1.00	100.00
ILLUM. SIGN		25	0.05	
LUMINAIRE		250	0.50	
VIDEO SYSTEM		150	1.00	
FLASHER			0.50	
ENERGY COSTS TO:				TOTAL = 382.30

VILLAGE OF Des Plaines
1420 Miner Street
Des Plaines, ILLINOIS 60016

ENERGY SUPPLY - CONTACT: Dave Schacht
PHONE: (630) 437-2129
COMPANY:



CABLE PLAN

CONSTRUCTION NOTES
ALL PROGRAMMED HEADS SHALL BE REPLACED WITH STANDARD LED HEADS.
CONTRACTOR SHALL ALIGN TRAFFIC SIGNAL HEADS WITH THEIR RESPECTIVE APPROACHES.

REPLACE ALL EXISTING TRAFFIC SIGNAL HEADS

THE TRAFFIC SIGNAL CONTROL EQUIPMENT FOR THIS PROJECT SHALL BE "EAGLE".

REMOVE EXISTING TRAFFIC SIGNAL EQUIPMENT
THE FOLLOWING ITEMS SHALL BE REMOVED BY THE CONTRACTOR AND SHALL BE DISPOSED OF BY THEM OUTSIDE THE RIGHT-OF-WAY AT THEIR EXPENSE. THE SALVAGE VALUE OF THE REMOVED EQUIPMENT SHALL BE REFLECTED IN THE CONTRACT BID PRICE.

QUANTITY	UNIT	DESCRIPTION
2	EACH	SIGNAL HEAD, 1-FACE, 3-SECTION
2	EACH	COMBINATION SIGNAL HEAD, 2-FACE, 3-SECTION
1	EACH	COMBINATION SIGNAL HEAD, 2-FACE, 1-3 SECTION, 1-5 SECTION
6	EACH	OPTICALLY PROGRAMMED SIGNAL HEAD, 1-FACE, 3-SECTION
1	EACH	OPTICALLY PROGRAMMED SIGNAL HEAD, 1-FACE, 5-SECTION
7	EACH	TRAFFIC SIGNAL BACKPLATE

SCHEDULE OF QUANTITIES

QUAN.	UNIT	ITEM
1	EACH	MAINTENANCE OF EXISTING TRAFFIC SIGNAL INSTALLATION
6	EACH	SIGNAL HEAD, LED, 1-FACE, 3-SECTION, MAST ARM MOUNTED
2	EACH	SIGNAL HEAD, LED, 1-FACE, 3-SECTION, BRACKET MOUNTED
1	EACH	SIGNAL HEAD, LED, 1-FACE, 5-SECTION, MAST ARM MOUNTED
2	EACH	SIGNAL HEAD, LED, 2-FACE, 3-SECTION, BRACKET MOUNTED
1	EACH	SIGNAL HEAD, LED, 2-FACE, 1-3 SECTION, 1-5 SECTION, BRACKET MOUNTED
7	EACH	TRAFFIC SIGNAL BACKPLATE, LOUVERED, ALUMINUM
1	EACH	MODIFY EXISTING CONTROLLER CABINET
1	EACH	REMOVE EXISTING TRAFFIC SIGNAL EQUIPMENT
1	EACH	UNINTERRUPTIBLE POWER SUPPLY, SPECIAL



DESIGNED - JAM	REVISED -
DRAWN - JAM	REVISED -
CHECKED - LMM	REVISED -
DATE - 10-14-13	REVISED -

**STATE OF ILLINOIS
DEPARTMENT OF TRANSPORTATION**

**SCHEDULE OF QUANTITIES, CABLE PLAN, PHASE DESIGNATION
DIAGRAM, AND EMERGENCY VEHICLE PREEMPTION SEQUENCE,
IL RTE. 72 (LEE STREET RAMP AT IL RTE. 72 (LEE STREET))**

SCALE: NONE SHEET OF SHEETS STA. TO STA.

F.A. RTE.	SECTION	COUNTY	TOTAL SHEETS	SHEET NO.
VAR	2013-054TS	COOK	99	47
				CONTRACT NO. 60X15
ILLINOIS FED. AID PROJECT				