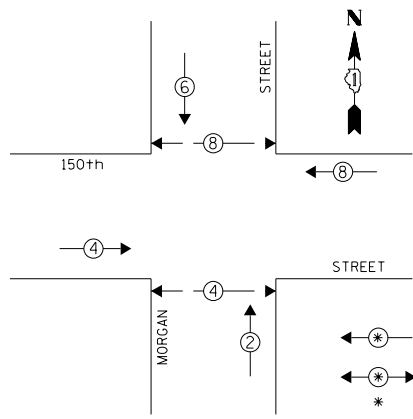


DATE: _____ BY: _____
 SURVEYED: _____ ALIGNED: _____
 PLAN: _____ NOTE BOOK: _____
 ENGINEERING LTD. ROSENBERG, ILLINOIS 60018 (647) 823-5500
CHRISTOPHER B. BURKE
 8575 West Higgins Road, Suite 600
 Rosemont, Illinois 60018 (647) 823-5500
 PROFILE: _____ SURVEYED: _____ GRADES CHECKED: _____
 NOTE BOOK: _____ ELEM. NOTED: _____ STRUCTURE: _____ NOTATIONS: _____

EXISTING CONTROLLER SEQUENCE



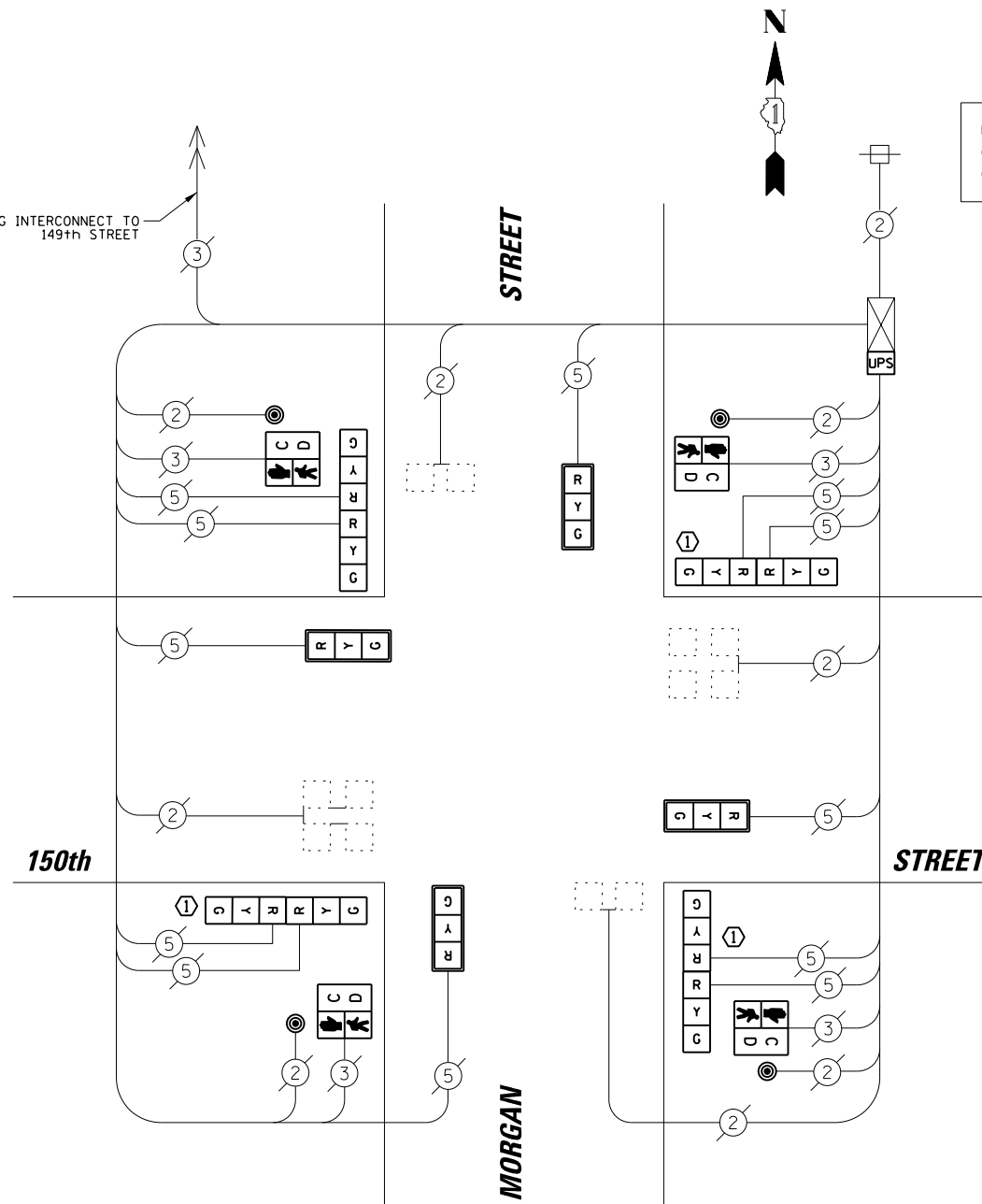
LEGEND
 ← ⊙ → DUAL ENTRY PHASE
 ← ⊙ → PEDESTRIAN PHASE
 * NUMBER REFERS TO ASSOCIATED PHASE

PHASE DESIGNATION DIAGRAM

NOTES

- 1) ALL COSTS RELATED TO ATTACHING THE POSTS TO THE EXISTING FOUNDATION SHALL BE INCLUDED IN THE UNIT COST OF TRAFFIC SIGNAL POST OF THE SIZE SPECIFIED
- 2) PRIOR TO REMOVING ANY TRAFFIC SIGNAL POST SPECIFIED TO BE REPLACED IN THE SAME LOCATION, THE CONTRACTOR SHALL VERIFY THAT THE PATTERN, SPACING, AND CONDITION OF THE EXISTING BOLTS ARE SUITABLE FOR RE-USE WITH A NEW POST. IF THE BOLTS ARE NOT REUSABLE, REPLACE AS DIRECTED BY THE ENGINEER.
- 3) THE CONTRACTOR SHALL RELOCATE EXISTING SIGN PANELS FROM POSTS THAT ARE INDICATED FOR REPLACEMENT TO THE NEW POSTS AS SHOWN ON THE PLANS OR AS DIRECTED BY THE ENGINEER. THE COST OF REMOVAL, RELOCATION AND ANY NEW MOUNTING HARDWARE NECESSARY TO COMPLETE THIS WORK SHALL BE INCLUDED IN THE UNIT COST OF TRAFFIC SIGNAL POST OF THE SIZE SPECIFIED.

EXISTING INTERCONNECT TO 149th STREET



UPS SHALL BE INSTALLED ON LEFT SIDE OF CONTROLLER CABINET DUE TO PHYSICAL CONSTRAINT, OR AS DIRECTED BY THE ENGINEER.

CABLE PLAN

CONSTRUCTION NOTE:

- 1) THE CONTRACTOR SHALL REPLACE THE EXISTING TRAFFIC SIGNAL POST WITH THE PROPOSED TRAFFIC SIGNAL POST, 14 FT. AND ATTACH THE PROPOSED POST TO THE EXISTING FOUNDATION.

REMOVAL OF EXISTING TRAFFIC SIGNAL EQUIPMENT

THE FOLLOWING ITEMS SHALL BE REMOVED BY THE CONTRACTOR AND SHALL BE DISPOSED OF BY THEM OUTSIDE THE RIGHT-OF-WAY AT THEIR EXPENSE. THE SALVAGE VALUE OF THE REMOVED EQUIPMENT SHALL BE REFLECTED IN THE CONTRACT BID PRICE.

- | | | |
|---|------|--------------------------------|
| 4 | EACH | SIGNAL HEAD, 2-FACE, 3-SECTION |
| 4 | EACH | SIGNAL HEAD, 1-FACE, 3-SECTION |
| 4 | EACH | PEDESTRIAN SIGNAL HEAD, 1-FACE |
| 4 | EACH | PEDESTRIAN PUSH-BUTTON |
| 3 | EACH | STEEL POST |

SCHEDULE OF QUANTITIES

ITEM	UNIT	QUANTITY
MAINTENANCE OF EXISTING TRAFFIC SIGNAL INSTALLATION	EACH	1
TRAFFIC SIGNAL POST, GALVANIZED STEEL 14 FT.	EACH	3
SIGNAL HEAD, LED, 1-FACE, 3-SECTION, MAST-ARM MOUNTED	EACH	4
SIGNAL HEAD, LED, 2-FACE, 3-SECTION, BRACKET MOUNTED	EACH	4
PEDESTRIAN SIGNAL HEAD, LED, 1-FACE, BRACKET MOUNTED WITH COUNTDOWN TIMER	EACH	4
TRAFFIC SIGNAL BACKPLATE, LOUVERED, ALUMINUM	EACH	4
PEDESTRIAN PUSH-BUTTON	EACH	4
MODIFY EXISTING CONTROLLER CABINET	EACH	1
REMOVE EXISTING TRAFFIC SIGNAL EQUIPMENT	EACH	1
UNINTERRUPTABLE POWER SUPPLY, SPECIAL	EACH	1

TS # 13835
 HARVEY

I.D.O.T. TRAFFIC SIGNAL INSTALLATION ELECTRICAL SERVICE REQUIREMENTS					TOTAL WATTAGE
TYPE	NO. OF LAMPS	WATTAGE X INCAND.	LED	% OPERATION	
SIGNAL (RED)	12		17	0.50	102.00
(YELLOW)	12		25	0.25	75.00
(GREEN)	12		15	0.25	45.00
ARROW	-		12	0.10	-
PED. SIGNAL	8		25	1.00	200.00
CONTROLLER	1		100	1.00	100.00
ILLUMINATED SIGN	-		25	0.05	-
VIDEO SYSTEM	-		150	1.00	-
LUMINAIRE	-	250		0.50	-
BATTERY BACKUP	1	25		1.00	25.0
FLASHER	-			0.50	-
ENERGY COSTS TO:					TOTAL = 547.00

CITY OF HARVEY

15320 BROADWAY AVENUE
 HARVEY, IL 60426

ENERGY SUPPLY: CONTACT: BRAD SHINABARGAR
 PHONE: (708)-235-2692
 COMPANY: COMED

FILE NAME = N:\dot\130116\Work Order 13019 - South Cook County LED\Traffic\CAB_Morgan-150th.Lsp	USER NAME = fpaceone	DESIGNED - EAJ	REVISED -
		DRAWN - FPB / FCP	REVISED -
		CHECKED - GMZ	REVISED -
		DATE - SEPT. , 2013	REVISED -

STATE OF ILLINOIS
 DEPARTMENT OF TRANSPORTATION

SCHEDULE OF QUANTITIES, CABLE PLAN, PHASE DESIGNATION DIAGRAM AND EMERGENCY VEHICLE PREEMPTION SEQUENCE MORGAN STREET AT 150TH STREET

SCALE: SHEET NO. OF SHEETS STA. TO STA.

F.A.P. RTE.	SECTION	COUNTY	TOTAL SHEETS	SHEET NO.
	VARIOUS	COOK	87	67
CONTRACT NO. 60X24				
FED. ROAD DIST. NO. ILLINOIS FED. AID PROJECT				