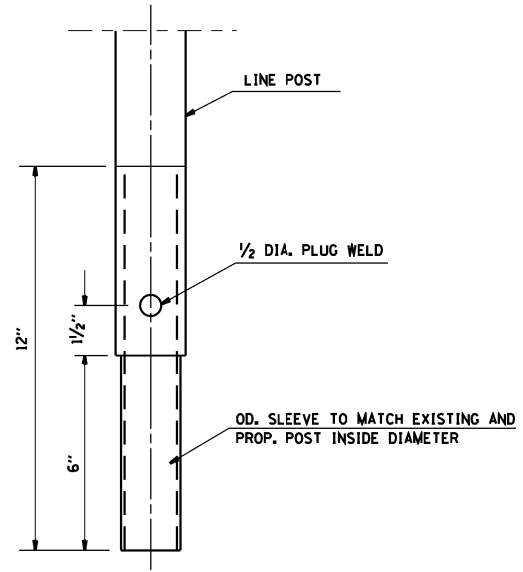
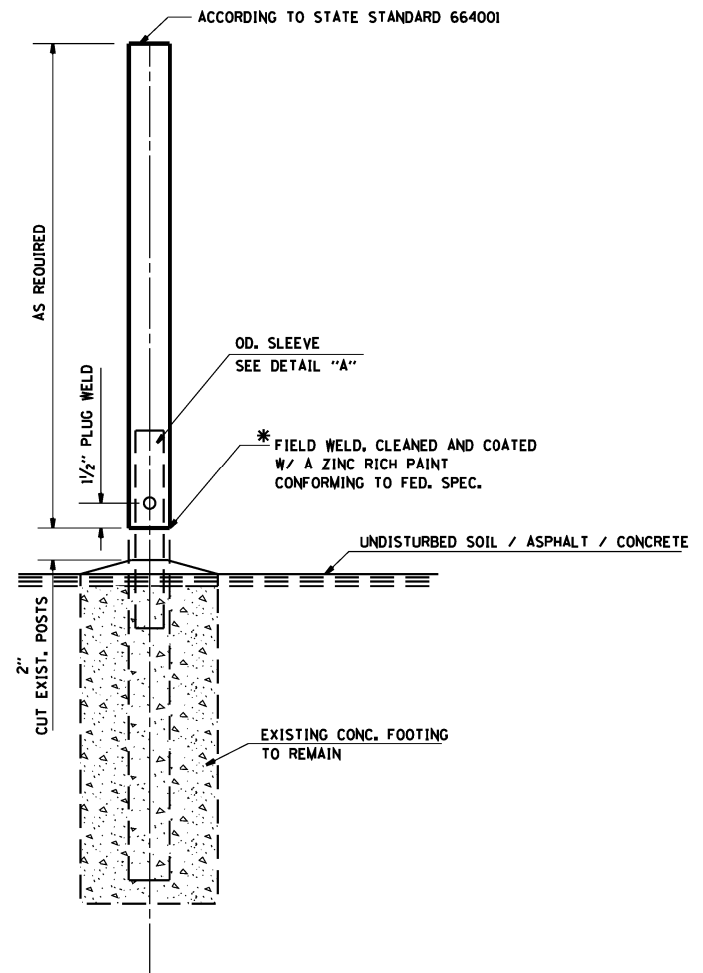


GENERAL NOTES:

THIS WORK CONSISTS OF FURNISHING ALL LABOR, MATERIALS, TOOLS AND EQUIPMENT TO REPAIR CHAIN LINK FENCE POST SLEEVE AS SHOWN ON THE PLANS OR AS DIRECTED BY THE ENGINEER, AND IN ACCORDANCE WITH STATE STANDARD 664001.

BASIS OF PAYMENT: THIS WORK SHALL BE PAID FOR AT THE CONTRACT UNIT PRICE EACH FOR "CHAIN LINK FENCE POST SLEEVE REPAIR" WHICH PRICE SHALL BE PAYMENT IN FULL TO COMPLETE THE WORK AS SPECIFIED HEREIN.



**SLEEVE DET. DWG**  
DETAIL "A"  
SLEEVE DETAIL

\* THIS WORK SHALL BE INCLUDED IN THE COST OF THE PAY ITEM "CHAIN LINK FENCE POST SLEEVE REPAIR"

FILE NAME =	USER NAME = pyrzanowskirb	DESIGNED -	REVISED -
ca:\pwwork\pwwork\pyrzanowskirb\d0365322	ND109614-sht-cover.dgn	DRAWN -	REVISED -
	PLOT SCALE = 100.0001' / in.	CHECKED -	REVISED -
	PLOT DATE = 10/15/2013	DATE -	REVISED -

STATE OF ILLINOIS  
DEPARTMENT OF TRANSPORTATION

CHAIN LINK FENCE POST SLEEVE REPAIR DETAIL			
SCALE:	SHEET NO.	OF SHEETS	STA. TO STA.

F.A. RTE.	SECTION	COUNTY	TOTAL SHEETS	SHEET NO.
VAR	2013-0651	VARIOUS	14	11
CONTRACT NO. 60X42				
FED. ROAD DIST. NO. ILLINOIS FED. AID PROJECT				