

01-17-14 LETTING ITEM 020

STATE OF ILLINOIS
DEPARTMENT OF TRANSPORTATION
DIVISION OF HIGHWAYS

F.A. RTE.	SECTION	COUNTY	TOTAL SHEETS	SHEET NO.
VAR	2013-0651	VARIOUS	14	1
ILLINOIS CONTRACT NO. 60X42				

FOR INDEX OF SHEETS, SEE SHEET NO. 2

PROPOSED HIGHWAY PLANS

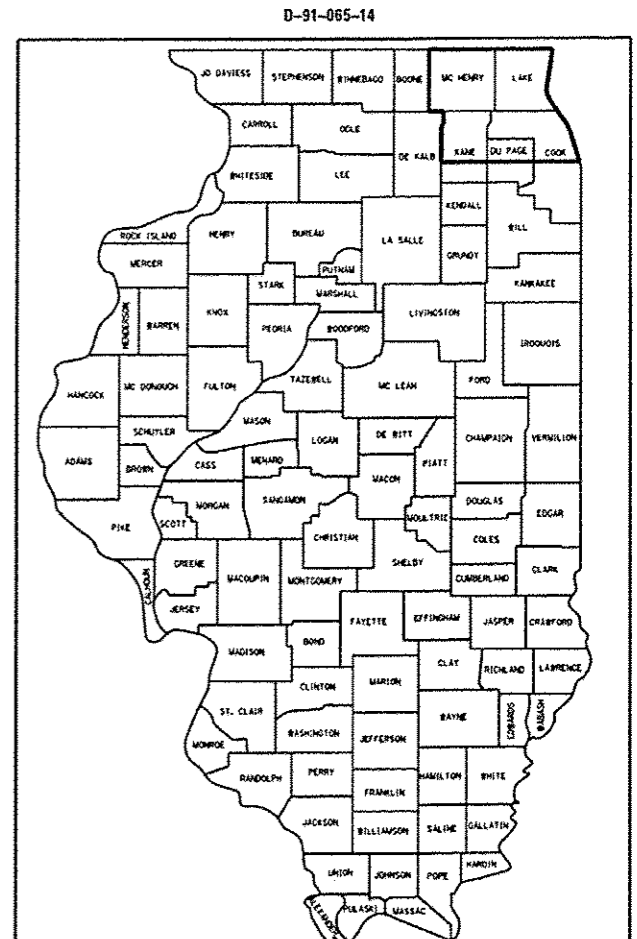
ROUTE: VARIOUS EXPRESSWAYS AND ARTERIAL
HIGHWAYS – NORTHERN PART, DISTRICT ONE

SECTION: 2013-0651

FENCE REPAIR

COUNTY: VARIOUS

C-91-095-14



THIS SECTION IS LOCATED ALONG VARIOUS ROUTES WITHIN THE DISTRICT ONE COUNTIES OF MC HENRY, LAKE, KANE, DU PAGE, COOK AND WILL.

**SEE LOCATION MAPS
SHEETS 4 THRU 8**

C.U.A.N.
CHICAGO UTILITY ALERT NETWORK
1-312-744-7000

J.U.L.I.E.
JOINT UTILITY LOCATION INFORMATION FOR EXCAVATION
1-800-892-0123
OR 811

PROJECT ENGINEER: J. ALAIN MIDY (847) 221-3056
PROJECT MANAGER: ISSAM RAYYAN (847) 705-4178

CONTRACT NO. 60X42

STATE OF ILLINOIS
DEPARTMENT OF TRANSPORTATION
DIVISION OF HIGHWAYS

SUBMITTED December 23, 2013

John F. ...
DEPUTY DIRECTOR OF HIGHWAYS, REGION ENGINEER

Dec 6, 2013
John D. Baranzelli, P.E.
acting ENGINEER OF DESIGN AND ENVIRONMENT

Dec 6, 2013
Omer Osman, P.E.
DIRECTOR OF HIGHWAYS, CHIEF ENGINEER

**PRINTED BY THE AUTHORITY
OF THE STATE OF ILLINOIS**

INDEX OF SHEETS

1. TITLE SHEET
2. INDEX OF SHEETS
LIST OF APPLICABLE STATE STANDARDS
3. SUMMARY OF QUANTITIES
4. COOK COUNTY (NORTH OF ILL 38) LOCATION MAP
5. DUPAGE COUNTY (NORTH OF ILL 38) LOCATION MAP
6. KANE COUNTY (NORTH OF ILL 38) LOCATION MAP
7. LAKE COUNTY LOCATION MAP
8. MC HENRY COUNTY LOCATION MAP
9. DETAILS OF PEDESTRIAN BARRIER TYPE III (STD. 10-SS-514R)
10. CHAIN LINK FENCE (STD. 10-SS-506B)
11. CHAIN LINK FENCE POST SLEEVE REPAIR DETAIL
12. PROPOSED PEDESTRIAN BARRIER AND CHAIN LINK FENCE
WITH TENSION WIRE AND FENCE RAIL REMOVAL
13. SPECIAL FENCE DETAILS
14. TRAFFIC CONTROL DETAILS FOR SHOULDER CLOSURE AND
PARTIAL RAMP CLOSURES

STATE STANDARDS

DESCRIPTION

- | | |
|-----------|--|
| 664001-02 | CHAIN LINK FENCE |
| 665001-02 | WOVEN WIRE FENCE |
| 701001-02 | OFF-RD OPERATIONS, 2L, 2W, MORE THAN 15' AWAY |
| 701006-05 | OFF-RD OPERATIONS, 2L, 2W, 15' TO 24" FROM PAVEMENT EDGE |
| 701101-04 | OFF-RD OPERATIONS, MULTILANE, 15' TO 24" FROM PAVEMENT EDGE |
| 701106-02 | OFF-RD OPERATIONS, MULTILANE, MORE THAN 15' AWAY |
| 701201-04 | LANE CLOSURE, 2L, 2W, DAY ONLY, FOR SPEEDS > 45 MPH |
| 701301-04 | LANE CLOSURE, 2L, 2W, SHORT TIME OPERATIONS |
| 701421-06 | LANE CLOSURE, MULTILANE, DAY OPERATIONS ONLY, FOR SPEEDS
> 45 MPH TO 55 MPH |
| 701422-06 | LANE CLOSURE, MULTILANE, FOR SPEEDS > 45 MPH TO 55 MPH |
| 701501-06 | URBAN LANE CLOSURE, 2L, 2W, UNDIVIDED |
| 701606-09 | URBAN LANE CLOSURE, MULTILANE, 2W WITH MOUNTABLE MEDIAN |
| 701701-09 | URBAN LANE CLOSURE, MULTILANE INTERSECTION |
| 701801-05 | SIDEWALK, CORNER OR CROSSWALK CLOSURE |
| 701901-03 | TRAFFIC CONTROL DEVICES |

FILE NAME *	USER NAME * pyzanoski	DESIGNED -	REVISED -	STATE OF ILLINOIS DEPARTMENT OF TRANSPORTATION	INDEX OF SHEETS AND STATE STANDARDS				F.A. RTE.	SECTION	COUNTY	TOTAL SHEETS	SHEET NO.
c:\pwork\pwork\pyzanoski\1003632	10109614-shit-cover.dgn	DRAWN -	REVISED -						VAR	2013-0651	VARIOUS	14	2
	PLOT SCALE * 100.0000' / in.	CHECKED -	REVISED -		CONTRACT NO. 60x42								
Default	PLOT DATE * 10/23/2013	DATE -	REVISED -		SCALE:	SHEET	OF	SHEETS	STA.	TO STA.	ILLINOIS FED. AID PROJECT		

SUMMARY OF QUANTITIES			URBAN	CONSTRUCTION TYPE CODE: 0021				
CODE NO	ITEM	UNIT	TOTAL QUANTITIES	100% CONT. MAINT.	100% MCHD			
66400505	CHAIN LINK FENCE, 8'	FOOT	123	92	31			
66500105	WOVEN WIRE FENCE, 4'	FOOT	12	9	3			
X6640100	FENCE RAIL REMOVAL	FOOT	1136	852	284			
X6640300	CHAIN LINK FENCE REMOVAL	FOOT	29	22	7			
X6640309	CHAIN LINK GATES (SPECIAL)	SO FT	497	373	124			
X6640590	CHAIN LINK FENCE POST SLEEVE REPAIR	EACH	29	22	7			
Z0009600	CHAIN LINK FABRIC, SPECIAL, 5'-0"	FOOT	15	11	4			
Z0009700	CHAIN LINK FABRIC, SPECIAL, 6'-0"	FOOT	1420	1065	355			
Z0009800	CHAIN LINK FABRIC, SPECIAL, 7'-0"	FOOT	7	5	2			
Z0009810	CHAIN LINK FABRIC, SPECIAL, 8'-0"	FOOT	44	33	11			
Z0009900	CHAIN LINK FABRIC, TYPE 1, 4'-0"	FOOT	11928	8946	2982			
Z0010300	CHAIN LINK FABRIC, TYPE 3, SPECIAL	FOOT	284	213	71			
Z0020210	PULL POST ARRANGEMENT	EACH	2	1	1			
Z0033200	LINE POST, TYPE 1	EACH	512	384	128			
Z0033305	LINE POST, TYPE 3 SPECIAL	EACH	15	11	4			
Z0042500	POST, SPECIAL	EACH	80	60	20			

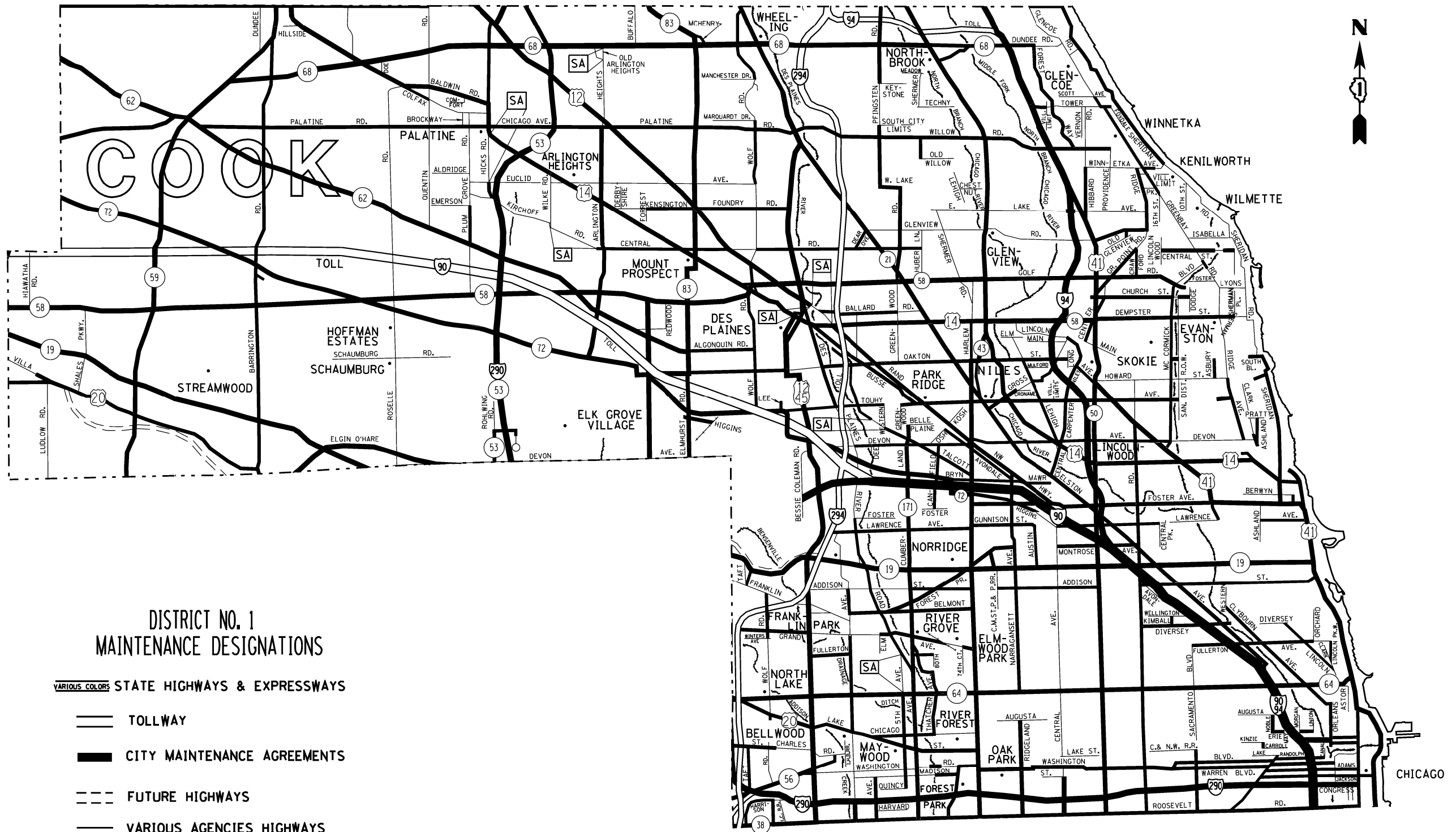
SUMMARY OF QUANTITIES			URBAN	CONSTRUCTION TYPE CODE: 0021				
CODE NO	ITEM	UNIT	TOTAL QUANTITIES	100% CONT. MAINT.	100% MCHD			
Z0042505	POST REMOVAL AND REPLACEMENT	EACH	4	3	1			
Z0074000	TERMINAL POST, TYPE 1	EACH	29	22	7			
Z0074010	TERMINAL POST, TYPE 3 SPECIAL	EACH	4	3	1			

FILE NAME * c:\p\work\p100\prz\z0042500\0365322-00964-4	USER NAME * przanowskirb	DESIGNED - DRAWN -	REVISOR - REVISOR -
PLOT SCALE * 1000000' / 1"	CHECKED - DATE -	REVISION - REVISION -	REVISION - REVISION -
PLOT DATE * 10/24/2013			

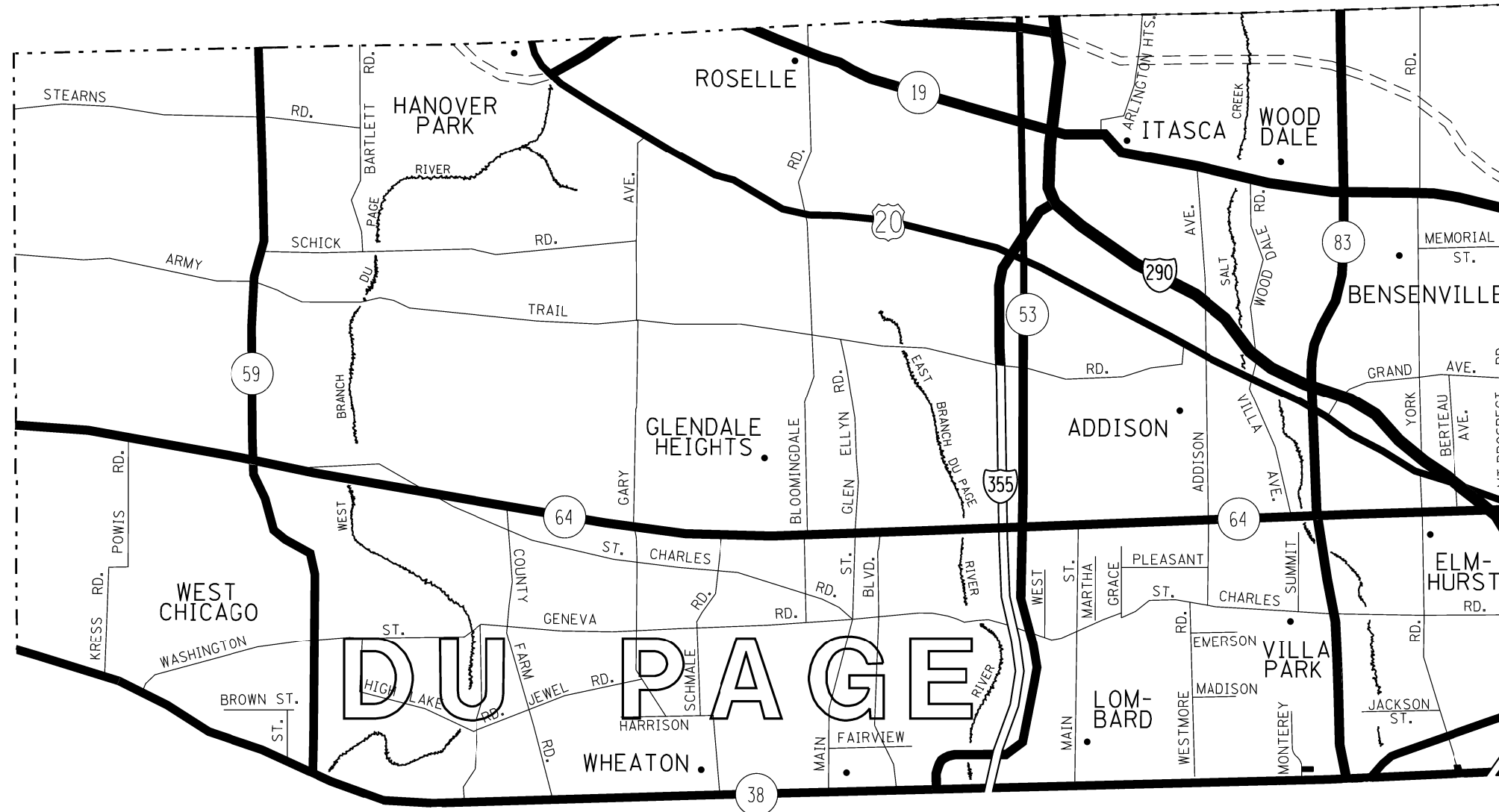
**STATE OF ILLINOIS
DEPARTMENT OF TRANSPORTATION**

SUMMARY OF QUANTITIES			
SCALE:	SHEET NO.	OF SHEETS	STA. TO STA.

F.A. RTE.	SECTION	COUNTY	TOTAL SHEETS	SHEET NO.
VAR	2013-0651	VARIOUS	14	3
FED. ROAD DIST. NO. 1 ILLINOIS FED. AID PROJECT			CONTRACT NO. 60X42	



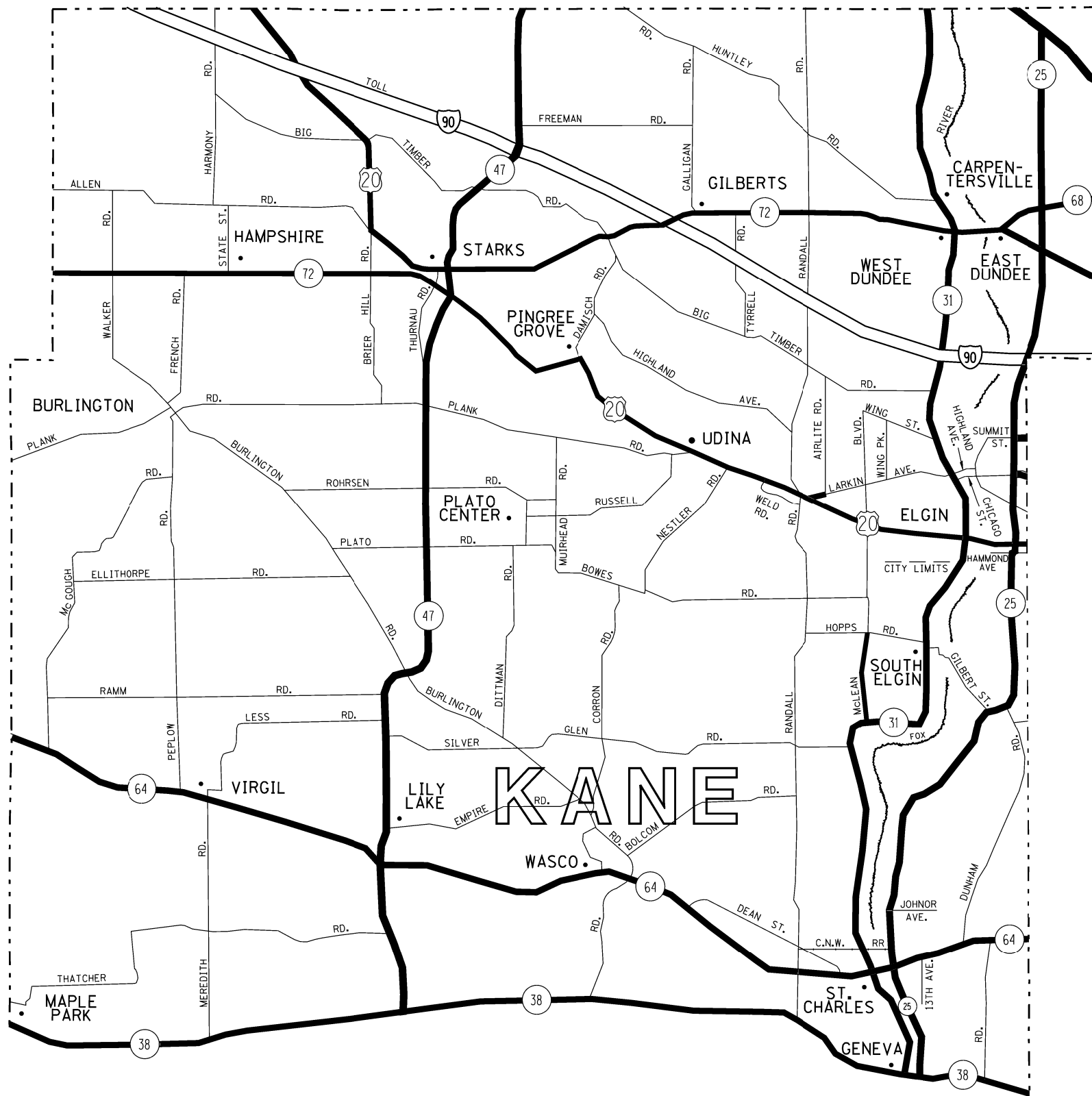
FILE NAME = c:\pwwork\pwwork\pyrzenowskirb\101365322	USER NAME = pyrzenowskirb ND109614-sht-cover.dgn	DESIGNED - DRAWN -	REVISED - REVISED -	STATE OF ILLINOIS DEPARTMENT OF TRANSPORTATION	FENCE REPAIR LOCATION MAP - COOK COUNTY SOUTH OF IL RTE 38				F.A. RTE. VAR	SECTION 2013-0651	COUNTY VARI0US	TOTAL SHEETS 14	SHEET NO. 4
Default	PLOT SCALE = 100.0134' / in.	CHECKED -	REVISED -		SCALE:	SHEET	OF	SHEETS	STA.	TO	STA.	CONTRACT NO. 60X42	
	PLOT DATE = 10/15/2013	DATE -	REVISED -									ILLINOIS FED. AID PROJECT	



DISTRICT NO. 1
MAINTENANCE DESIGNATIONS

- VARIOUS COLORS** STATE HIGHWAYS & EXPRESSWAYS
- TOLLWAY
- CITY MAINTENANCE AGREEMENTS
- FUTURE HIGHWAYS
- VARIOUS AGENCIES HIGHWAYS

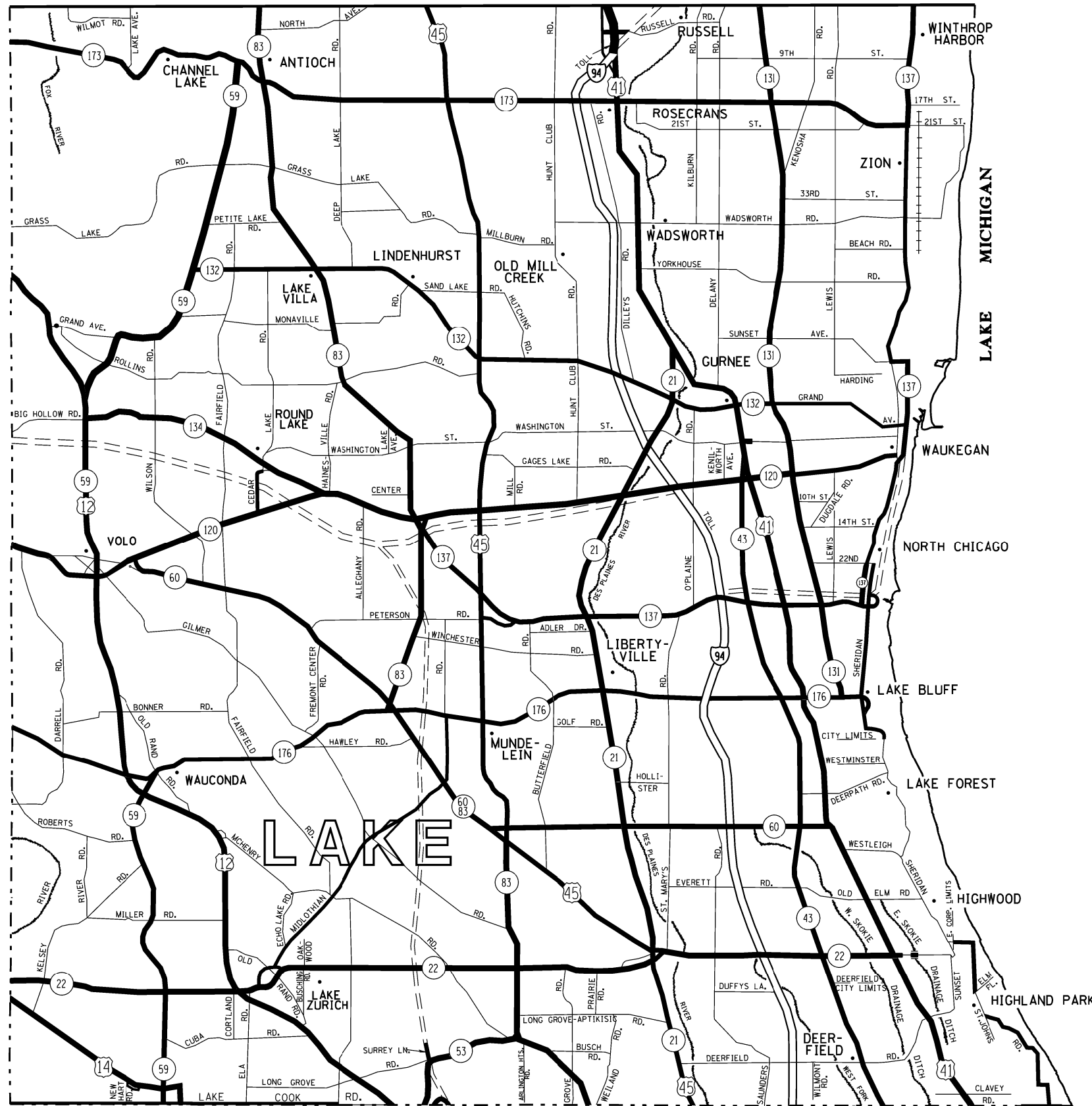
FILE NAME = c:\pwork\pwork\pyrzenowskirb\d036532	USER NAME = pyrzenowskirb	DESIGNED -	REVISED -	STATE OF ILLINOIS DEPARTMENT OF TRANSPORTATION	FENCE REPAIR LOCATION MAP - DuPAGE COUNTY SOUTH OF IL RTE 38			F.A. RTE.	SECTION	COUNTY	TOTAL SHEETS	SHEET NO.
	ND109614-sht-cover.dgn	DRAWN -	REVISED -					VAR	2013-0651	VARIOUS	14	5
Default	PLOT SCALE = 100.0000' / in.	CHECKED -	REVISED -				CONTRACT NO. 60X42					
	PLOT DATE = 10/15/2013	DATE -	REVISED -				ILLINOIS FED. AID PROJECT					
				SCALE:	SHEET	OF	SHEETS	STA.	TO	STA.		



DISTRICT NO. 1
MAINTENANCE DESIGNATIONS

- VARIOUS COLORS** STATE HIGHWAYS & EXPRESSWAYS
- TOLLWAY
- CITY MAINTENANCE AGREEMENTS
- FUTURE HIGHWAYS
- VARIOUS AGENCIES HIGHWAYS

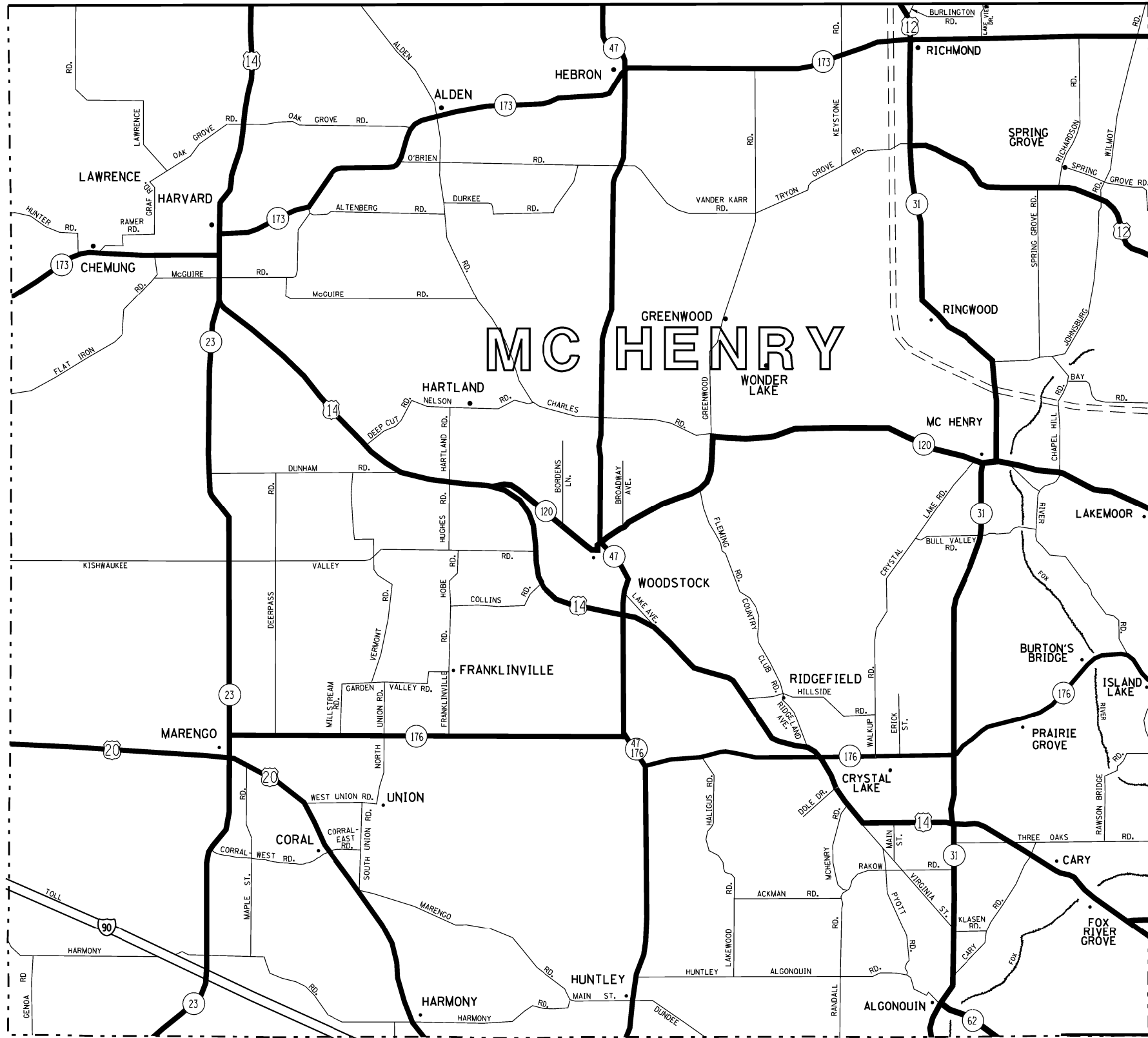
FILE NAME =	USER NAME = pyzzenowskirb	DESIGNED -	REVISED -	STATE OF ILLINOIS DEPARTMENT OF TRANSPORTATION	FENCE REPAIR LOCATION MAP - KANE COUNTY SOUTH OF IL RTE 38	F.A. RTE.	SECTION	COUNTY	TOTAL SHEETS	SHEET NO.	
ct:\pwork\pido\pyzzenowskirb\036532	ND109614-sht-cover.dgn	DRAWN -	REVISED -			VAR	2013-0651	VARIOUS	14	6	
Default	PLOT SCALE = 100.0000' / in.	CHECKED -	REVISED -			CONTRACT NO. 60X42					
	PLOT DATE = 10/15/2013	DATE -	REVISED -			ILLINOIS FED. AID PROJECT					
					SCALE:	SHEET	OF	SHEETS	STA.	TO	STA.



DISTRICT NO. 1 MAINTENANCE DESIGNATIONS

- VARIOUS COLORS STATE HIGHWAYS & EXPRESSWAYS
- TOLLWAY
- CITY MAINTENANCE AGREEMENTS
- FUTURE HIGHWAYS
- VARIOUS AGENCIES HIGHWAYS

FILE NAME =	USER NAME = pyzanoskirb	DESIGNED -	REVISED -	STATE OF ILLINOIS DEPARTMENT OF TRANSPORTATION	FENCE REPAIR LOCATION MAP - WILL COUNTY			F.A. RTE.	SECTION	COUNTY	TOTAL SHEETS	SHEET NO.			
Default	ct:\pwork\p14\pyzanoskirb\d036532\ND109614-sht-cover.dgn	DRAWN -	REVISED -					VAR	2013-0651	VARIOUS	14	7			
	PLOT SCALE = 100.0000' / 1" =	CHECKED -	REVISED -					CONTRACT NO. 60X42			ILLINOIS FED. AID PROJECT				
	PLOT DATE = 10/15/2013	DATE -	REVISED -					SCALE:	SHEET	OF	SHEETS	STA.	TO	STA.	



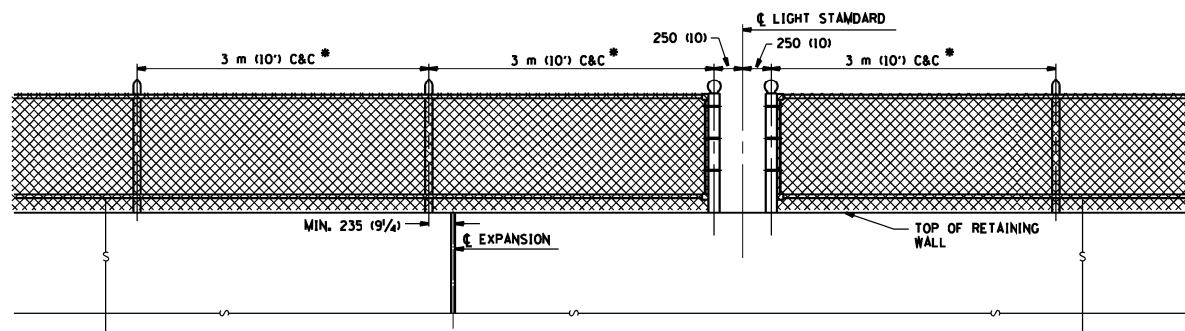
**DISTRICT NO. 1
MAINTENANCE DESIGNATIONS**

- VARIOUS COLORS** STATE HIGHWAYS & EXPRESSWAYS
- ==** TOLLWAY
- ==** CITY MAINTENANCE AGREEMENTS
- FUTURE HIGHWAYS
- VARIOUS AGENCIES HIGHWAYS

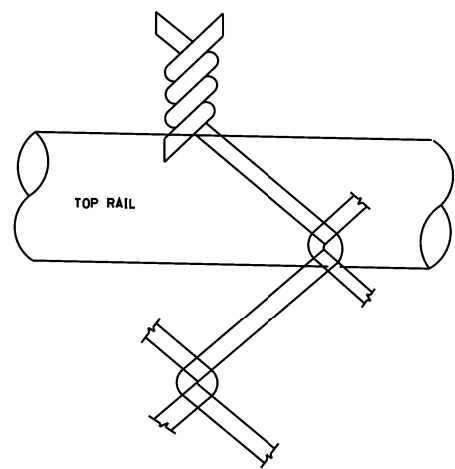
FILE NAME = c:\p\work\p1\dot\p\pyrzenowskirb\d036532	USER NAME = pyrzenowskirb	DESIGNED -	REVISED -	STATE OF ILLINOIS DEPARTMENT OF TRANSPORTATION	SCALE:	SHEET	OF	SHEETS	STA.	TO	STA.	F.A. RTE.	SECTION	COUNTY	TOTAL SHEETS	SHEET NO.
	Drawn	Checked	DATE									VAR	2013-0651	VARIOUS	14	8
Default	PLOT SCALE = 100.0000' / 1in. PLOT DATE = 10/15/2013											CONTRACT NO. 60X42				
												ILLINOIS FED. AID PROJECT				

NOTE

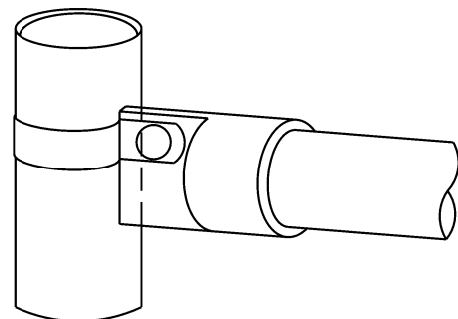
• MAXIMUM POST SPACING SHALL BE 3 m (10') C&C EXCEPT WHERE OTHERWISE SHOWN ON PLANS



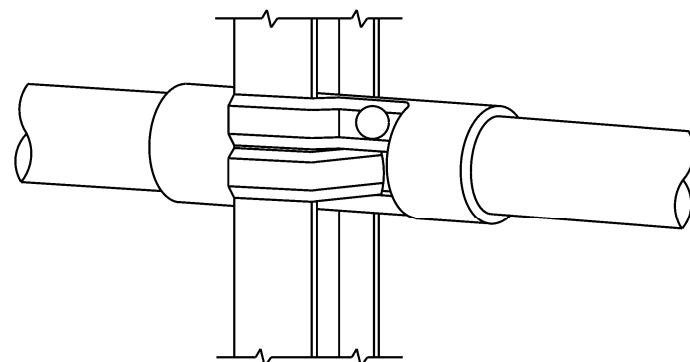
ELEVATION VIEW OF RETAINING WALL WITH PEDESTRIAN BARRIER TYPE III



WIRE MESH FABRIC TO BE BARBED AT THE TOP

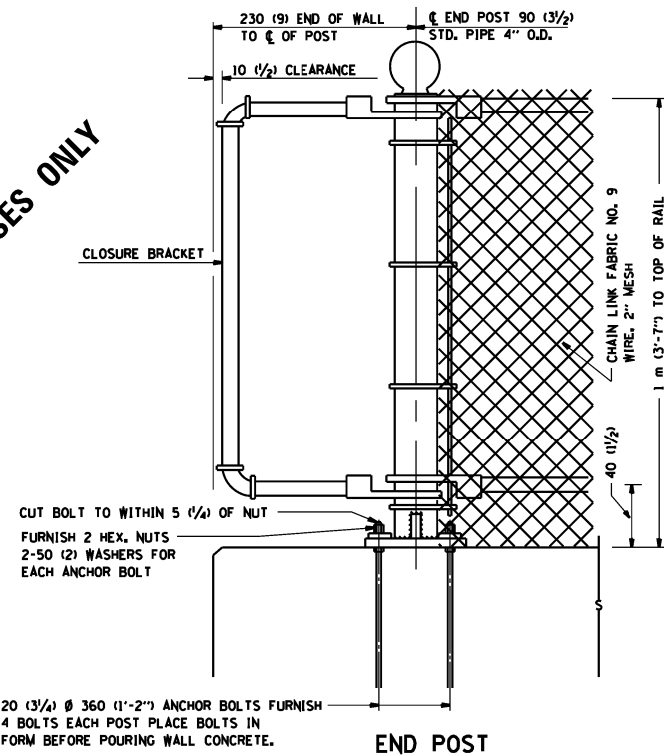


RAIL FITTING AT END POSTS



RAIL FITTING ON SECTION LINE POST

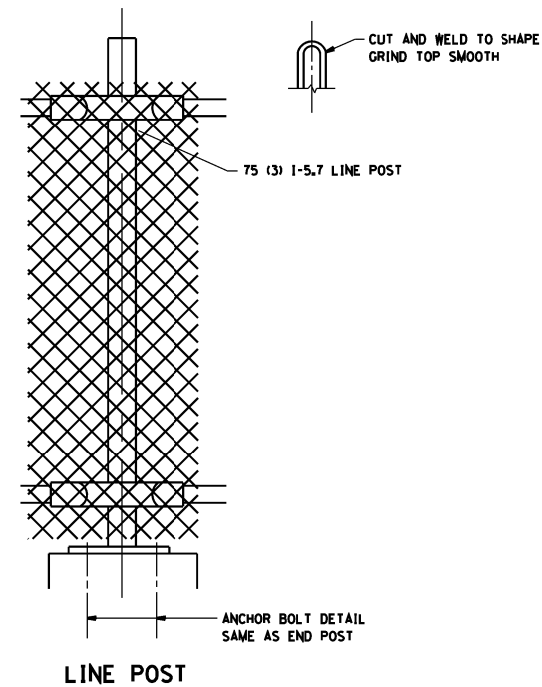
FOR INFORMATIONAL PURPOSES ONLY



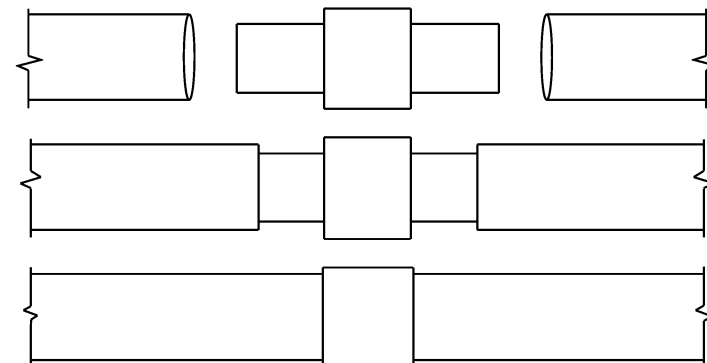
END POST

20 (3/4) Ø 360 (1'-2") ANCHOR BOLTS FURNISH 4 BOLTS EACH POST PLACE BOLTS IN FORM BEFORE POURING WALL CONCRETE.

NOTE:
THE COST OF FURNISHING ANCHOR BOLTS, NUTS, & WASHERS TO BE INCIDENTAL

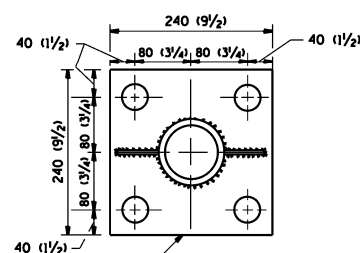


LINE POST



EXPANSION COUPLING DETAIL

NOTE:
EXP. COUPLING TO APPEAR IN TOP AND BOTTOM RAILS WHERE EVER EXP. JT. APPEARS IN STRUCTURE.



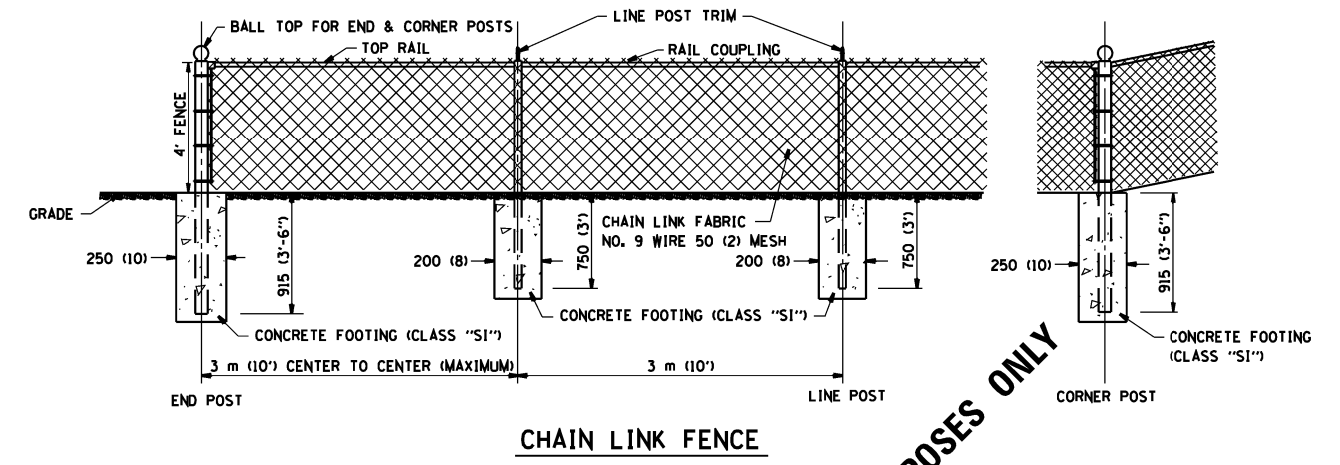
240 (9 1/2) X 80 (3 1/4) X 240 (9 1/2) BASE PLATE
4-30 (1 1/4) Ø HOLES FOR END Ø LINE POSTS

ANCHOR PLATE DETAILS

NOTE:
POST, PLATE AND GUSSET ASSEMBLY SHALL BE GALVANIZED AFTER ALL CUTTING, DRILLING, WELDING, AND FABRICATION HAVE BEEN COMPLETED. THE GALVANIZED COATING SHALL CONFORM TO THE REQUIREMENTS OF AASHTO M 120. THE GALVANIZED COATING SHALL NOT BE LESS THAN 610 G/50 M (2.0 OZ./50. FT.) OF SURFACE.

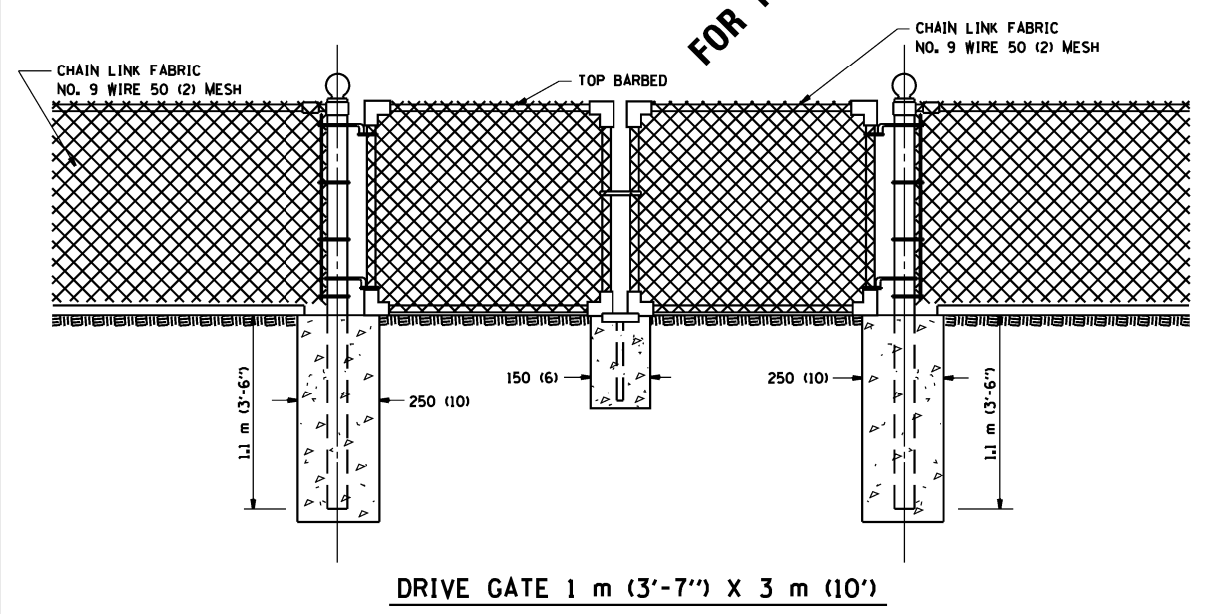
ALL DIMENSIONS ARE IN MILLIMETERS (INCHES) UNLESS OTHERWISE SHOWN.

FILE NAME =	USER NAME = pyrzenowskirb	DESIGNED -	REVISED -	STATE OF ILLINOIS DEPARTMENT OF TRANSPORTATION	PEDESTRIAN BARRIER TYPE III STD. 10-SS-514 R				F.A. RTE.	SECTION	COUNTY	TOTAL SHEETS	SHEET NO.
ca:\pwr\work\pwidot\pyrzenowskirb\d036532	NDI09614-sht-cover.dgn	DRAWN -	REVISED -						VAR	2013-0651	VARIOUS	14	9
	PLOT SCALE = 100.0036' / 1in.	CHECKED -	REVISED -		CONTRACT NO. 60X42								
	PLOT DATE = 10/15/2013	DATE -	REVISED -		SCALE:	SHEET NO.	OF SHEETS	STA.	TO STA.	FED. ROAD DIST. NO.	ILLINOIS FED. AID PROJECT		

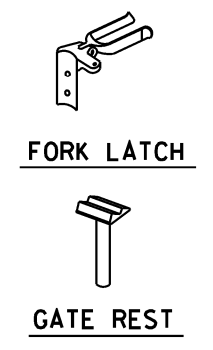


CHAIN LINK FENCE

FOR INFORMATIONAL PURPOSES ONLY



DRIVE GATE 1 m (3'-7'') X 3 m (10')



ALL DIMENSIONS ARE IN MILLIMETERS (INCHES) UNLESS OTHERWISE SHOWN.

NOTE:
 THE CHAIN LINK FENCE AS SHOWN HEREIN SHALL BE CONSTRUCTED AT SUCH LOCATIONS AS SHOWN ON PLANS AND IN ACCORDANCE WITH THE SPECIAL PROVISIONS

 THE ENGINEER SHALL ESTABLISH ALL NECESSARY LINE AND GRADE PRIOR TO THE ERECTION OF THE FENCE IN CONFORMANCE WITH THE PLANS

FILE NAME =	USER NAME = pyrzanowskirb	DESIGNED -	REVISED -
ct:\pw\work\p1dot\pyrzanowskirb\d036532	ND109614-sht-cover.dgn	DRAWN -	REVISED -
	PLOT SCALE = 100.0038' / in.	CHECKED -	REVISED -
	PLOT DATE = 10/15/2013	DATE -	REVISED -

STATE OF ILLINOIS
 DEPARTMENT OF TRANSPORTATION

CHAIN LINK FENCE
 STD. 10-SS-506 B

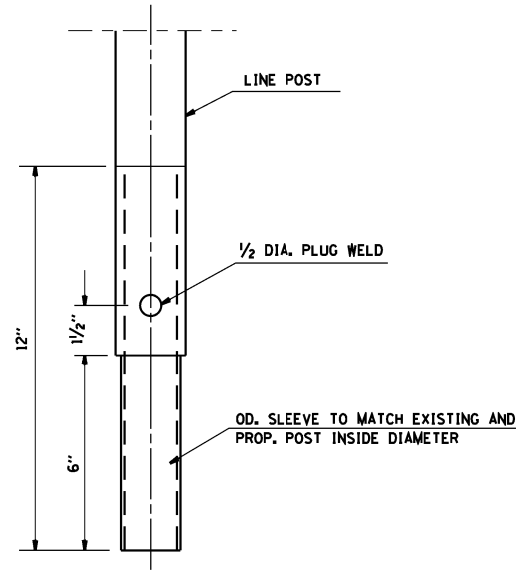
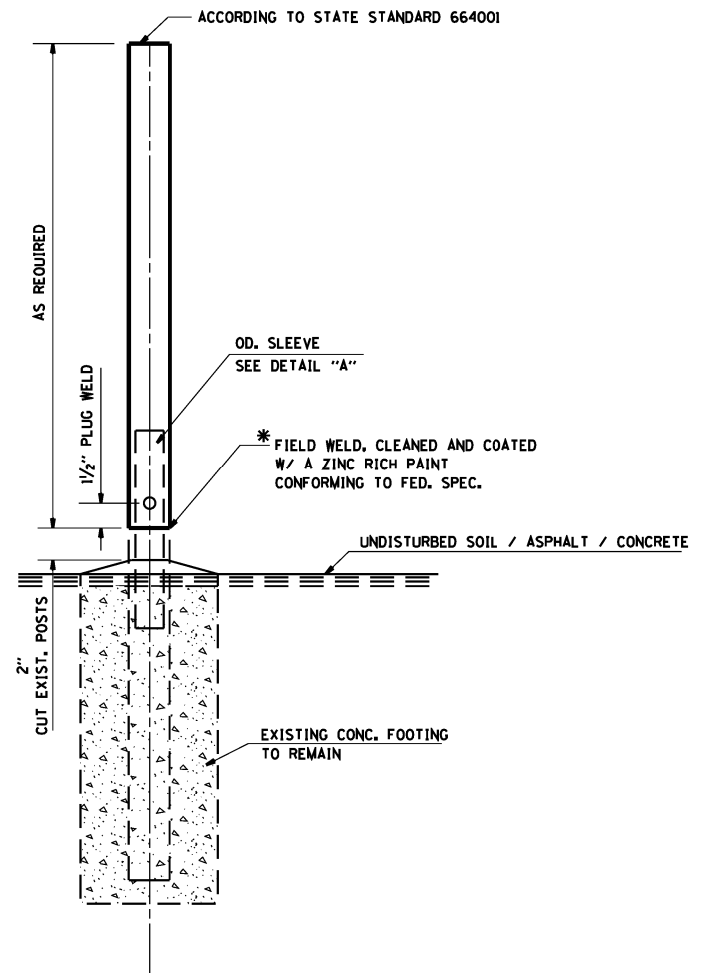
SCALE:	SHEET NO.	OF SHEETS	STA.	TO STA.
--------	-----------	-----------	------	---------

F.A. RTE.	SECTION	COUNTY	TOTAL SHEETS	SHEET NO.
VAR	2013-0651	VARIOUS	14	10
FED. ROAD DIST. NO. ILLINOIS FED. AID PROJECT			CONTRACT NO. 60X42	

GENERAL NOTES:

THIS WORK CONSISTS OF FURNISHING ALL LABOR, MATERIALS, TOOLS AND EQUIPMENT TO REPAIR CHAIN LINK FENCE POST SLEEVE AS SHOWN ON THE PLANS OR AS DIRECTED BY THE ENGINEER, AND IN ACCORDANCE WITH STATE STANDARD 664001.

BASIS OF PAYMENT: THIS WORK SHALL BE PAID FOR AT THE CONTRACT UNIT PRICE EACH FOR "CHAIN LINK FENCE POST SLEEVE REPAIR" WHICH PRICE SHALL BE PAYMENT IN FULL TO COMPLETE THE WORK AS SPECIFIED HEREIN.



SLEEVE DET. DWG
DETAIL "A"
SLEEVE DETAIL

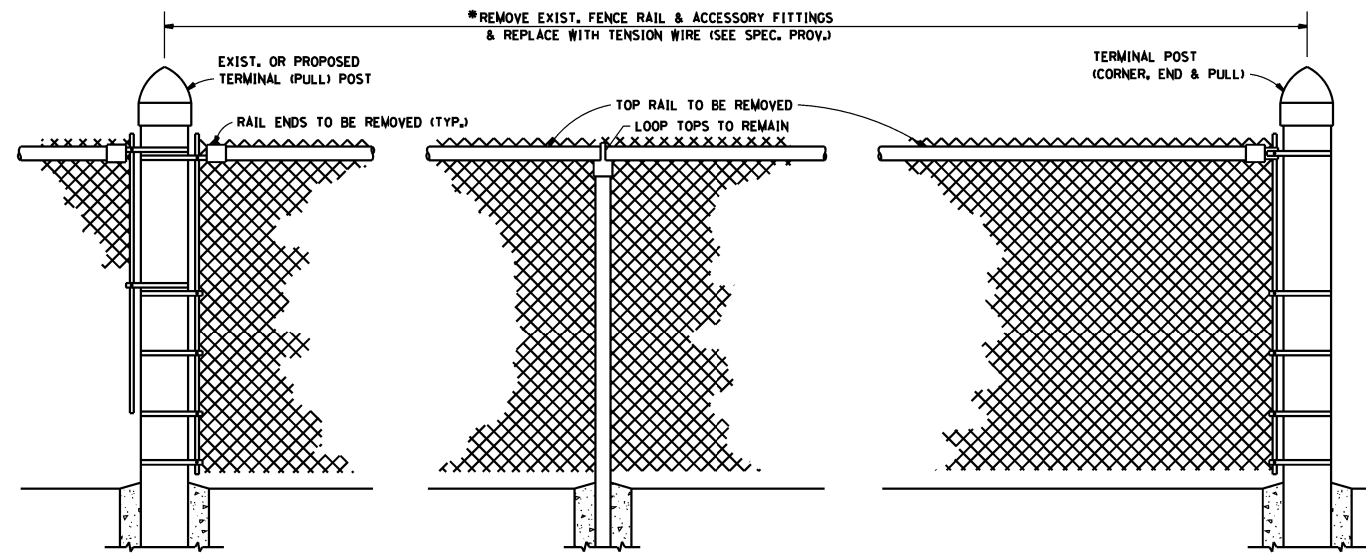
* THIS WORK SHALL BE INCLUDED IN THE COST OF THE PAY ITEM "CHAIN LINK FENCE POST SLEEVE REPAIR"

FILE NAME =	USER NAME = pyrzanowskirb	DESIGNED -	REVISED -
ca:\pwwork\pwwork\pyrzanowskirb\d0365322	ND109614-sht-cover.dgn	DRAWN -	REVISED -
	PLOT SCALE = 100.0001' / in.	CHECKED -	REVISED -
	PLOT DATE = 10/15/2013	DATE -	REVISED -

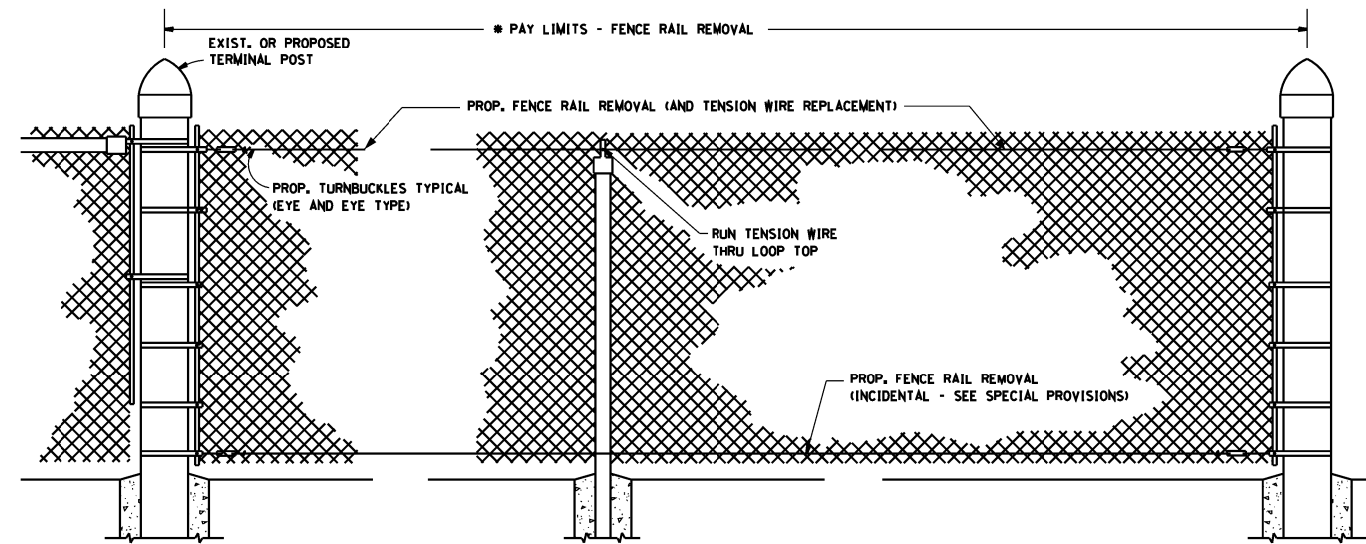
STATE OF ILLINOIS
DEPARTMENT OF TRANSPORTATION

CHAIN LINK FENCE POST SLEEVE REPAIR DETAIL			
SCALE:	SHEET NO.	OF SHEETS	STA. TO STA.

F.A. RTE.	SECTION	COUNTY	TOTAL SHEETS	SHEET NO.
VAR	2013-0651	VARIOUS	14	11
CONTRACT NO. 60X42				
FED. ROAD DIST. NO. ILLINOIS FED. AID PROJECT				



EXIST. CHAIN LINK FENCE WITH TOP RAIL



PROP. CHAIN LINK FENCE WITH "FENCE RAIL REMOVAL"

* THE ENGINEER IN CHARGE SHALL DETERMINE THE LENGTH OF FENCE RAIL TO BE REMOVED & REPLACED WITH "TENSION WIRE"

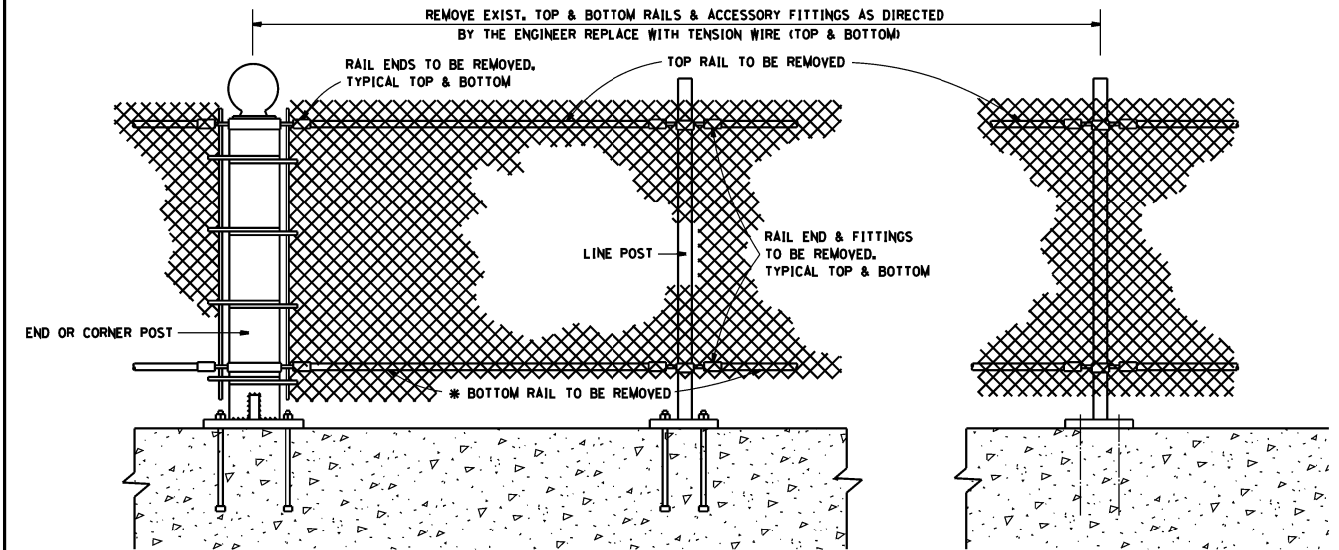
GENERAL NOTES

FENCE RAIL REMOVAL THIS ITEM CONSISTS OF REMOVING EXISTING TOP OR BOTTOM RAIL, (DAMAGED OR UNDEGRADED) AND REPLACING WITH TENSION WIRE. BOTTOM TENSION WIRE SHALL BE CONSIDERED INCIDENTAL EXCEPT AT LOCATIONS OF EXISTING BOTTOM RAIL REMOVAL.

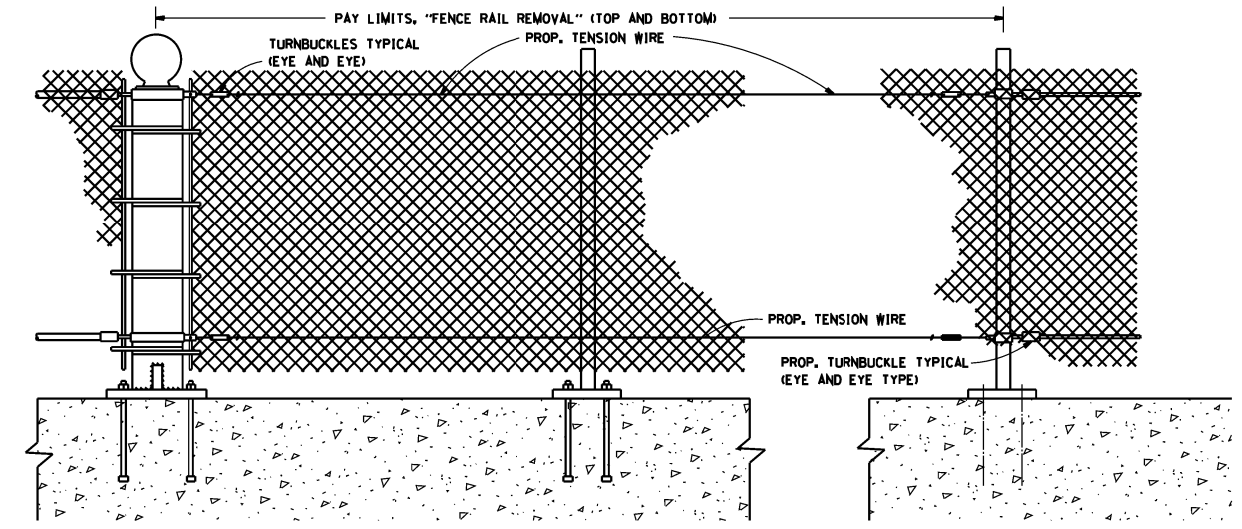
TENSION WIRE THIS ITEM CONSISTS OF INSTALLING TENSION WIRE, TOP OR BOTTOM, WHERE TOP OR BOTTOM RAIL IS NON-EXISTENT, OR WHERE EXISTING DAMAGED TENSION WIRE IS REMOVED AND REPLACED BY NEW TENSION WIRE.

ALL WORK AND MATERIALS SHALL BE IN ACCORDANCE WITH THE PLANS, SPECIAL PROVISIONS, STANDARD SPECIFICATIONS AND STANDARD 664001.

REPLACEMENT OF OTHER FENCE COMPONENT PARTS SHALL BE MEASURED AND PAID FOR SEPARATELY AS DESCRIBED IN THE SPECIAL PROVISIONS.



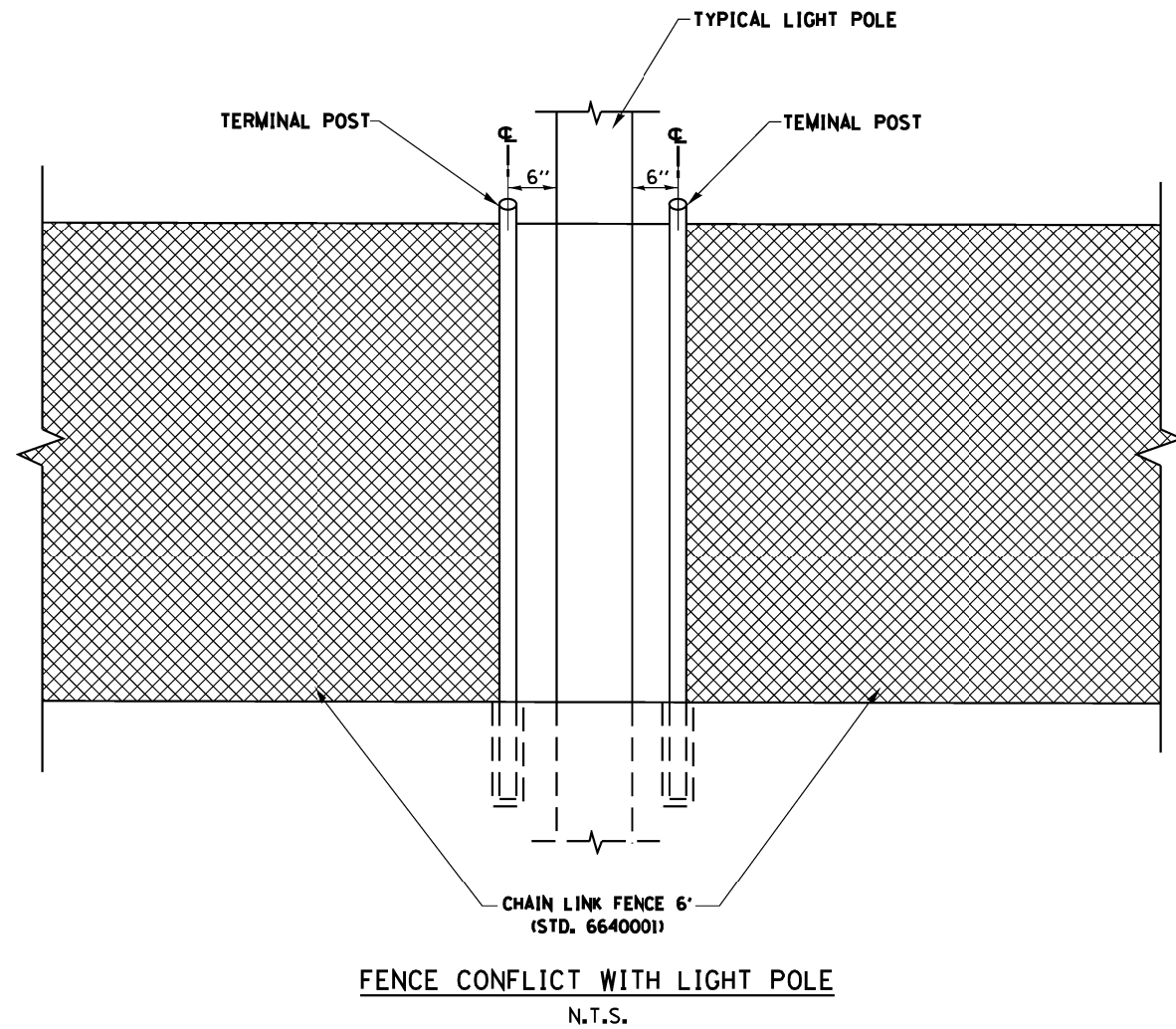
EXIST. PEDESTRIAN BARRIER TYPE 3 WITH TOP AND BOTTOM RAILS



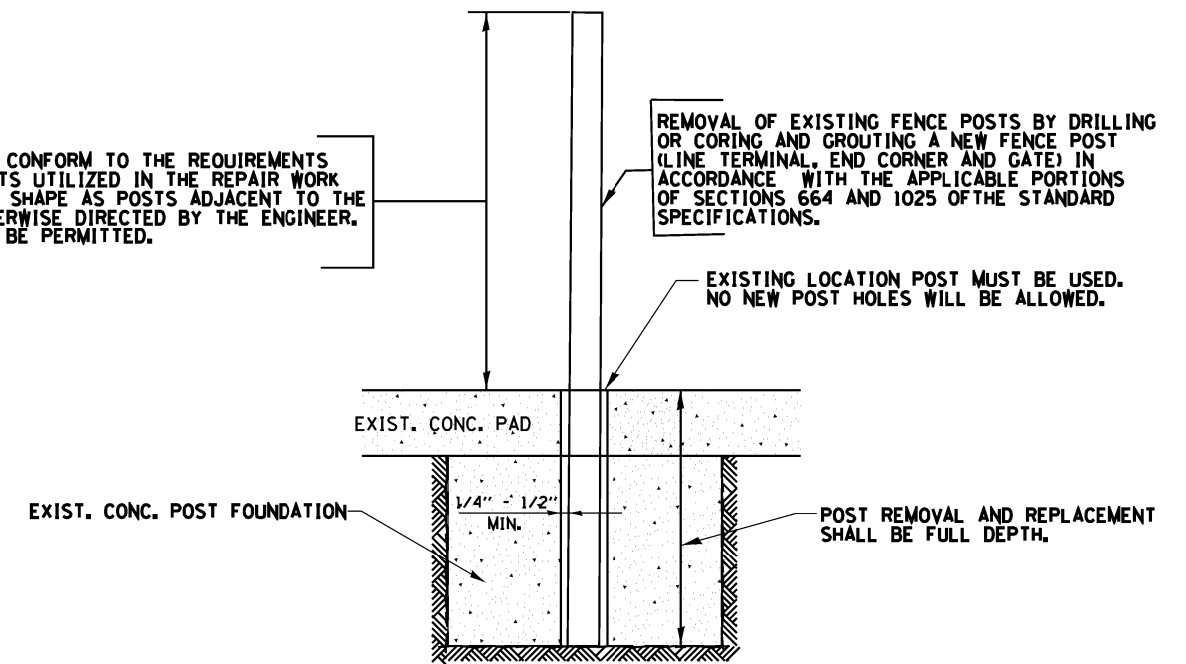
PROP. PEDESTRIAN BARRIER TYPE 3 WITH FENCE RAIL REMOVAL

ALL DIMENSIONS ARE IN MILLIMETERS (INCHES) UNLESS OTHERWISE SHOWN.

FILE NAME =	USER NAME = pyzzenowskirb	DESIGNED -	REVISED -	STATE OF ILLINOIS DEPARTMENT OF TRANSPORTATION	PROPOSED PEDESTRIAN BARRIER AND CHAIN LINK FENCE WITH TENSION WIRE AND FENCE RAIL REMOVAL				F.A. RTE.	SECTION	COUNTY	TOTAL SHEETS	SHEET NO.
ct:\pwork\p1\dot\pyzzenowskirb\d0365322	ND109614-sht-cover.dgn	DRAWN -	REVISED -						VAR	2013-0651	VARIOUS	14	12
	PLOT SCALE = 100.0002' / 1in.	CHECKED -	REVISED -		SCALE: SHEET NO. OF SHEETS STA. TO STA.				CONTRACT NO. 60X42				
	PLOT DATE = 10/15/2013	DATE -	REVISED -						FED. ROAD DIST. NO. ILLINOIS FED. AID PROJECT				



GALVANIZED POSTS SHALL CONFORM TO THE REQUIREMENTS OF STANDARD 864001 POSTS UTILIZED IN THE REPAIR WORK SHALL BE THE SAME TYPE SHAPE AS POSTS ADJACENT TO THE REPAIR AREA UNLESS OTHERWISE DIRECTED BY THE ENGINEER. NO USED MATERIALS WILL BE PERMITTED.



POST REMOVAL AND REPLACEMENT

FILE NAME =	USER NAME = pyzzenowskirb	DESIGNED -	REVISED -
ct:\pwork\pwork\pyzzenowskirb\036532\ND109614-sht-cover.dgn	ND109614-sht-cover.dgn	DRAWN -	REVISED -
Default	PLOT SCALE = 100.0000' / 1in.	CHECKED -	REVISED -
	PLOT DATE = 10/15/2013	DATE -	REVISED -

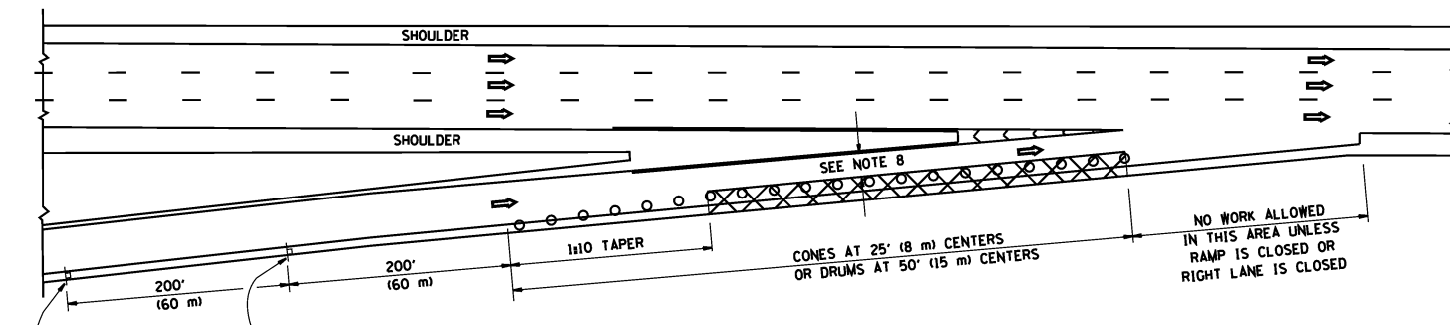
STATE OF ILLINOIS
DEPARTMENT OF TRANSPORTATION

SPECIAL FENCE DETAILS

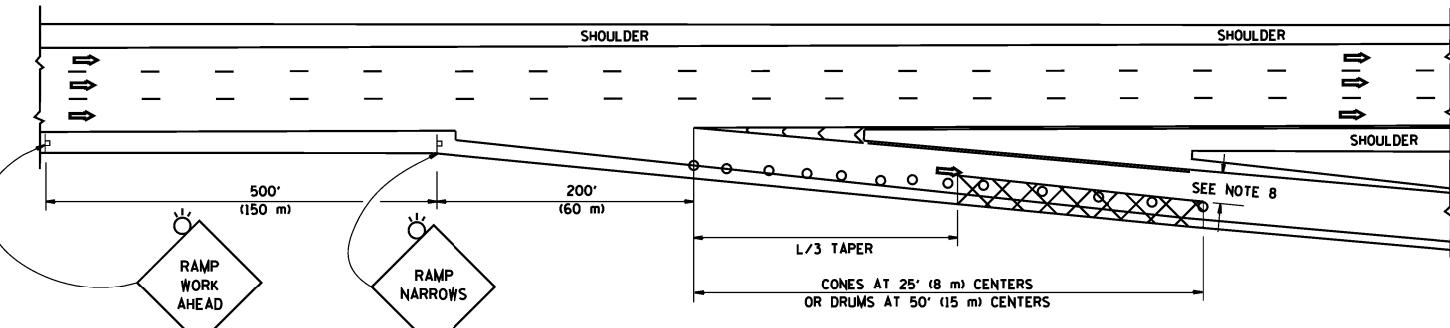
SCALE: SHEET OF SHEETS STA. TO STA.

F.A. RTE.	SECTION	COUNTY	TOTAL SHEETS	SHEET NO.
VAR	2013-0651	VARIOUS	14	13
CONTRACT NO. 60X42				
ILLINOIS FED. AID PROJECT				

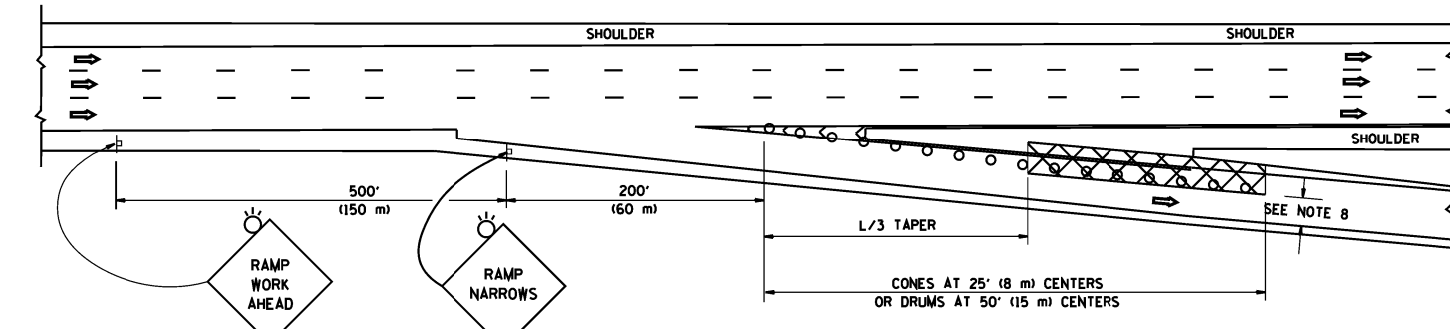
PARTIAL RAMP CLOSURE DETAILS



TYPICAL ENTRANCE RAMP



TYPICAL EXIT RAMP



TYPICAL EXIT RAMP

SYMBOLS

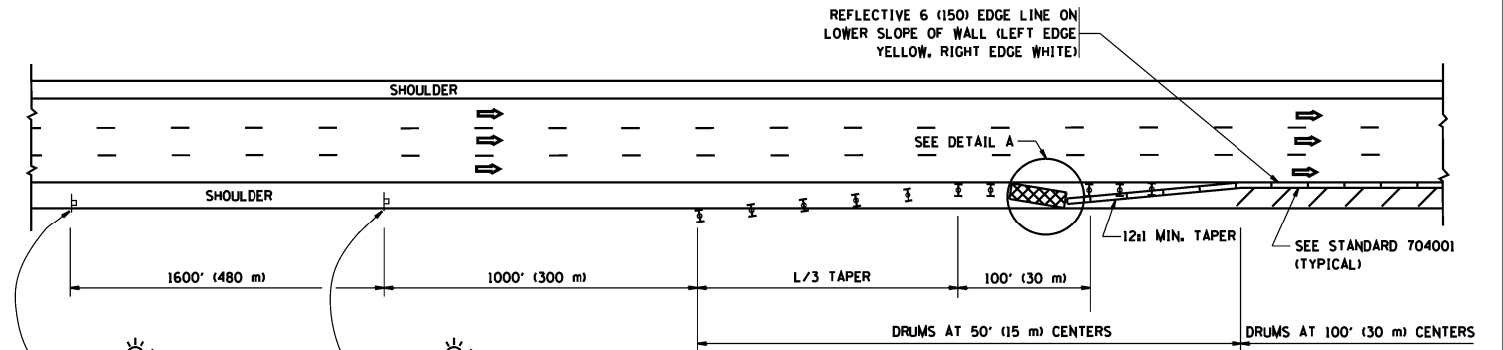
- ACTIVE WORK AREA
- SIGN ON PORTABLE OR PERMANENT SUPPORT
- FLAGGER WITH CONTROL SIGN
- TYPE II BARRICADE OR DRUM WITH STEADY BURN MONO-DIRECTIONAL LIGHT
- CONE, DRUM OR BARRICADE
- IMPACT ATTENUATOR OF TYPE AND TEST LEVEL SPECIFIED

GENERAL NOTES

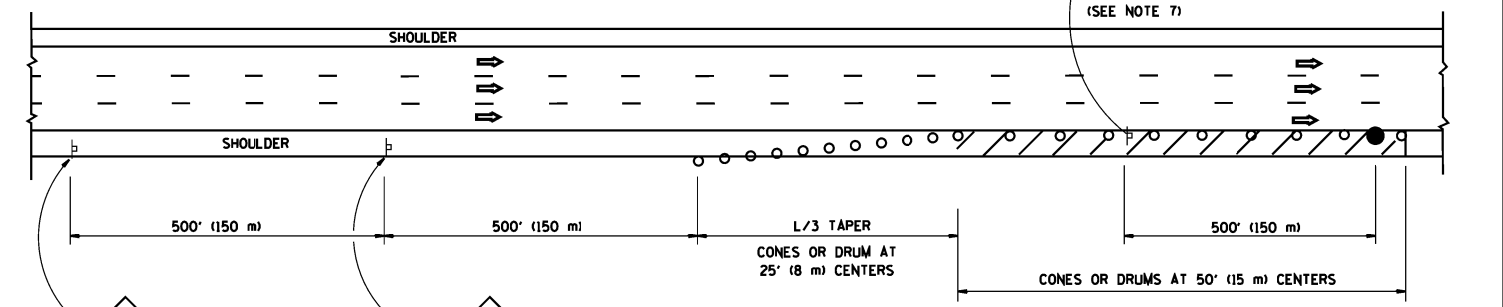
1. THE "L" DISTANCE EQUALS:

SPEED LIMIT	FORMULAS
45 mph (80 km/h) OR GREATER	METRIC ENGLISH
	$L = 0.65(W)(S)$ $L = (W)(S)$
	W = WIDTH OF OFFSET IN FEET (METERS)
	S = NORMAL POSTED SPEED MPH (KM/H)
2. PLASTIC DRUMS WITH HIGH PERFORMANCE REFLECTIVE SHEETING AND STEADY BURNING LIGHTS ARE REQUIRED FOR ALL NIGHTTIME CLOSURES.
3. ALL SIGNS SHALL BE POST MOUNTED IF THE CLOSURE TIME EXCEEDS FOUR DAYS.
4. FLASHING LIGHTS SHALL BE USED DURING THE HOURS OF DARKNESS AND SHALL BE INSTALLED ABOVE THE FIRST TWO SETS OF SIGNS.

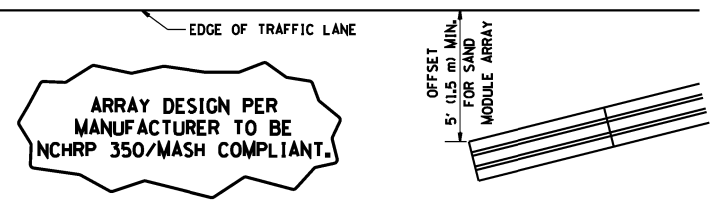
SHOULDER CLOSURE DETAILS



PERMANENT SHOULDER CLOSURE



DAYTIME SHOULDER CLOSURE



**DETAIL "A"
IMPACT ATTENUATOR, TEMPORARY
(SEE NOTE 5)**

5. THE IMPACT ATTENUATOR, TEMPORARY IS NOT REQUIRED WHEN THE TEMPORARY CONCRETE BARRIER WALL IS PROTECTED BY OR IS TIED INTO THE EXISTING GUARDRAIL. IF OFFSET IS LESS THAN 5 FEET USE NARROW USE TYPE DEVICE TO MEET NCHRP350/MASH.
6. AUTHORIZATION FROM THE DISTRICT'S BUREAU OF TRAFFIC IS REQUIRED FOR ALL FREEWAY CLOSURES.
7. THE FLAGGER AND FLAGGER SIGN ARE REQUIRED AT THE ABOVE WORK SITES WHEN:
 - a. FOUR OR MORE WORK VEHICLES ENTER THE TRAFFIC LANES IN A ONE HOUR PERIOD.
 - b. THE WORK ACTIVITY REQUIRES FREQUENT ENCR OACHMENT INTO THE LANE OPEN TO TRAFFIC.
 THE FLAGGER SHALL BE STATIONED APPROXIMATELY 100' (30 m) TO 200' (60 m) IN ADVANCE OF THE WORKERS.
8. 12" MIN. WIDTH TANGENT SECTION
16" MIN. WIDTH CURVE SECTION.

ALL DIMENSIONS ARE IN INCHES (MILLIMETERS) UNLESS OTHERWISE SHOWN.

FILE NAME =	USER NAME = pyrzanowskirb	DESIGNED -	REVISED - J.A.F. 12-06	STATE OF ILLINOIS DEPARTMENT OF TRANSPORTATION	TRAFFIC CONTROL DETAILS FOR FREEWAY SHOULDER CLOSURES AND PARTIAL RAMP CLOSURES			F.A. RTE.	SECTION	COUNTY	TOTAL SHEETS	SHEET NO.	
ct:\pwr\work\pwidot\pyrzanowskirb\d036532	ND109614-sht-cover.dgn	DRAWN - D.W.S.	REVISED - S.P.B. 01-07		SCALE: NONE	SHEET NO. 1 OF 1 SHEETS	STA.	TO STA.	VAR	2013-0651	VARIOUS	14	14
	PLOT SCALE = 99.9994 / in.	CHECKED -	REVISED - S.P.B. 12-09						TC-17				
	PLOT DATE = 10/15/2013	DATE - 11-96	REVISED - M.D. 06-13										CONTRACT NO. 60X42
								FED. ROAD DIST. NO. 1 ILLINOIS FED. AID PROJECT					