

1-17-14 LETTING ITEM 095

STATE OF ILLINOIS
DEPARTMENT OF TRANSPORTATION
DIVISION OF HIGHWAYS

F.A. RTE.	SECTION	COUNTY	TOTAL SHEETS	SHEET NO.
VAR	2013-0641	VARIOUS	13	1
		ILLINOIS	CONTRACT NO. 60X43	

FOR INDEX OF SHEETS, SEE SHEET NO. 2

PROPOSED HIGHWAY PLANS

ROUTE: VARIOUS EXPRESSWAYS AND ARTERIAL
HIGHWAYS – SOUTHERN PART, DISTRICT ONE

SECTION: 2013-0641

FENCE REPAIR

COUNTY: VARIOUS

C-91-096-14



SEE LOCATION MAPS
SHEETS 4 THRU 7

C.U.A.N.
CHICAGO UTILITY ALERT NETWORK
1-312-744-7000

J.U.L.I.E.
JOINT UTILITY LOCATION INFORMATION FOR EXCAVATION
1-800-892-0123
OR 811

PROJECT ENGINEER: J. ALAIN MIDY (847) 221-3056
PROJECT MANAGER: ISSAM RAYYAN (847) 705-4178

CONTRACT NO. 60X43

STATE OF ILLINOIS
DEPARTMENT OF TRANSPORTATION
DIVISION OF HIGHWAYS

SUBMITTED October 24, 2013
John Fortmann
DEPUTY DIRECTOR OF HIGHWAYS, REGION ENGINEER

Dec 6, 2013
John D. Baranzelli PE, Esq.
ENGINEER OF DESIGN AND ENVIRONMENT

Dec 6, 2013
Amer Osman PE, Esq.
DIRECTOR OF HIGHWAYS, CHIEF ENGINEER

PRINTED BY THE AUTHORITY
OF THE STATE OF ILLINOIS

INDEX OF SHEETS

1. TITLE SHEET
2. INDEX OF SHEETS
LIST OF APPLICABLE STATE STANDARDS
3. SUMMARY OF QUANTITIES
4. COOK COUNTY (SOUTH OF ILL 38) LOCATION MAP
5. DUPAGE COUNTY (SOUTH OF ILL 38) LOCATION MAP
6. KANE COUNTY (SOUTH OF ILL 38) LOCATION MAP
7. WILL COUNTY LOCATION MAP
8. DETAILS OF PEDESTRIAN BARRIER TYPE III (STD. 10-SS-514R)
9. CHAIN LINK FENCE (STD. 10-SS-506B)
10. CHAIN LINK FENCE POST SLEEVE REPAIR DETAIL
11. PROPOSED PEDESTRIAN BARRIER AND CHAIN LINK FENCE
WITH TENSION WIRE AND FENCE RAIL REMOVAL
12. SPECIAL FENCE DETAILS
13. TRAFFIC CONTROL DETAILS FOR SHOULDER CLOSURE AND
PARTIAL RAMP CLOSURES

STATE STANDARDS

- 664001-02
- 665001-02
- 701001-02
- 701006-05
- 701101-02
- 701106-02
- 701201-04
- 701301-04
- 701421-06
- 701422-06
- 701501-06
- 701606-09
- 701701-09
- 701801-05
- 701901-03

DESCRIPTION

- CHAIN LINK FENCE
- WOVEN WIRE FENCE
- OFF-RD OPERATIONS, 2L, 2W, MORE THAN 15' AWAY
- OFF-RD OPERATIONS, 2L, 2W, 15' TO 24" FROM PAVEMENT EDGE
- OFF-RD OPERATIONS, MULTILANE, 15' TO 24" FROM PAVEMENT EDGE
- OFF-RD OPERATIONS, MULTILANE, MORE THAN 15' AWAY
- LANE CLOSURE, 2L, 2W, DAY ONLY, FOR SPEEDS > 45 MPH
- LANE CLOSURE, 2L, 2W, SHORT TIME OPERATIONS
- LANE CLOSURE, MULTILANE, DAY OPERATIONS ONLY, FOR SPEEDS > 45 MPH TO 55 MPH
- LANE CLOSURE, MULTILANE, FOR SPEEDS > 45 MPH TO 55 MPH
- URBAN LANE CLOSURE, 2L, 2W, UNDIVIDED
- URBAN LANE CLOSURE, MULTILANE, 2W WITH MOUNTABLE MEDIUM
- URBAN LANE CLOSURE, MULTILANE INTERSECTION
- SIDEWALK, CORNER OR CROSSWALK CLOSURE
- TRAFFIC CONTROL DEVICES

FILE NAME *	USER NAME * MaldonadoM	DESIGNED -	REVISED -	STATE OF ILLINOIS DEPARTMENT OF TRANSPORTATION	INDEX OF SHEETS AND STATE STANDARDS	F.A. RTE.	SECTION	COUNTY	TOTAL SHEETS	SHEET NO.	
c:\pwwork\pwwork\maldonado\maldonado\9305324	D109514-Design.dgn	DRAWN -	REVISED -			VAR	2013-0641	VARIOUS	13	2	
	PLOT SCALE * 1/8"=1'-0"	CHECKED -	REVISED -			CONTRACT NO. 60X43					
Default	PLOT DATE * 10/24/2013	DATE -	REVISED -			SCALE:	SHEET	OF	SHEETS	STA.	TO STA.

URBAN

URBAN

SUMMARY OF QUANTITIES			CONSTRUCTION TYPE CODE						
CODE NO	ITEM	UNIT	TOTAL QUANTITIES	100% STATE	100% MCHD				
66400505	CHAIN LINK FENCE, 8'	FOOT	215	170	45				
66500105	WOVEN WIRE FENCE, 4'	FOOT	4800	3840	960				
X6640100	FENCE RAIL REMOVAL	FOOT	2000	1600	400				
X6640300	CHAIN LINK FENCE REMOVAL	FOOT	50	40	10				
X6640309	CHAIN LINK GATES (SPECIAL)	SO FT	700	560	140				
X6640590	CHAIN LINK FENCE POST SLEEVE REPAIR	EACH	40	32	8				
Z0009600	CHAIN LINK FABRIC, SPECIAL, 5'-0"	FOOT	20	16	4				
Z0009700	CHAIN LINK FABRIC, SPECIAL, 6'-0"	FOOT	1280	1056	224				
Z0009800	CHAIN LINK FABRIC, SPECIAL, 7'-0"	FOOT	8	6	2				
Z0009810	CHAIN LINK FABRIC, SPECIAL, 8'-0"	FOOT	60	48	12				
Z0009900	CHAIN LINK FABRIC, TYPE 1, 4'-0"	FOOT	16800	13440	3360				
Z0010300	CHAIN LINK FABRIC, TYPE 3, SPECIAL	FOOT	400	320	80				
Z0020210	PULL POST ARRANGEMENT	EACH	2	1	1				
Z0033200	LINE POST, TYPE 1	EACH	720	576	144				
Z0033305	LINE POST, TYPE 3 SPECIAL	EACH	20	16	4				
Z0042500	POST, SPECIAL	EACH	60	48	12				

SUMMARY OF QUANTITIES			CONSTRUCTION TYPE CODE						
CODE NO	ITEM	UNIT	TOTAL QUANTITIES	100% STATE	100% MCHD				
Z0042505	POST REMOVAL AND REPLACEMENT	EACH	5	4	1				
Z0074000	TERMINAL POST, TYPE 1	EACH	40	32	8				
Z0074010	TERMINAL POST, TYPE 3 SPECIAL	EACH	5	4	1				

3

FILE NAME :	USER NAME : <i>Maidanodhi</i>	DESIGNED :	REVISED :
<i>c:\work\p1019\m1019\m1019\036532\0200354-Design</i>		DRAWN :	REVISED :
		CHECKED :	REVISED :
		DATE :	REVISED :

**STATE OF ILLINOIS
DEPARTMENT OF TRANSPORTATION**

SUMMARY OF QUANTITIES			
SCALE:	SHEET NO. OF SHEETS	STA. TO STA.	

F.A. RTE.	SECTION	COUNTY	TOTAL SHEETS	SHEET NO.
VAR	2013-0641	VARIOUS	13	3
CONTRACT NO. 60X43				
FED. ROAD DIST. NO. 1 (ILLINOIS) FED. AID PROJECT				



DISTRICT NO. 1
MAINTENANCE DESIGNATIONS

- VARIOUS COLORS STATE HIGHWAYS & EXPRESSWAYS
- TOLLWAY
- CITY MAINTENANCE AGREEMENTS
- FUTURE HIGHWAYS
- VARIOUS AGENCIES HIGHWAYS

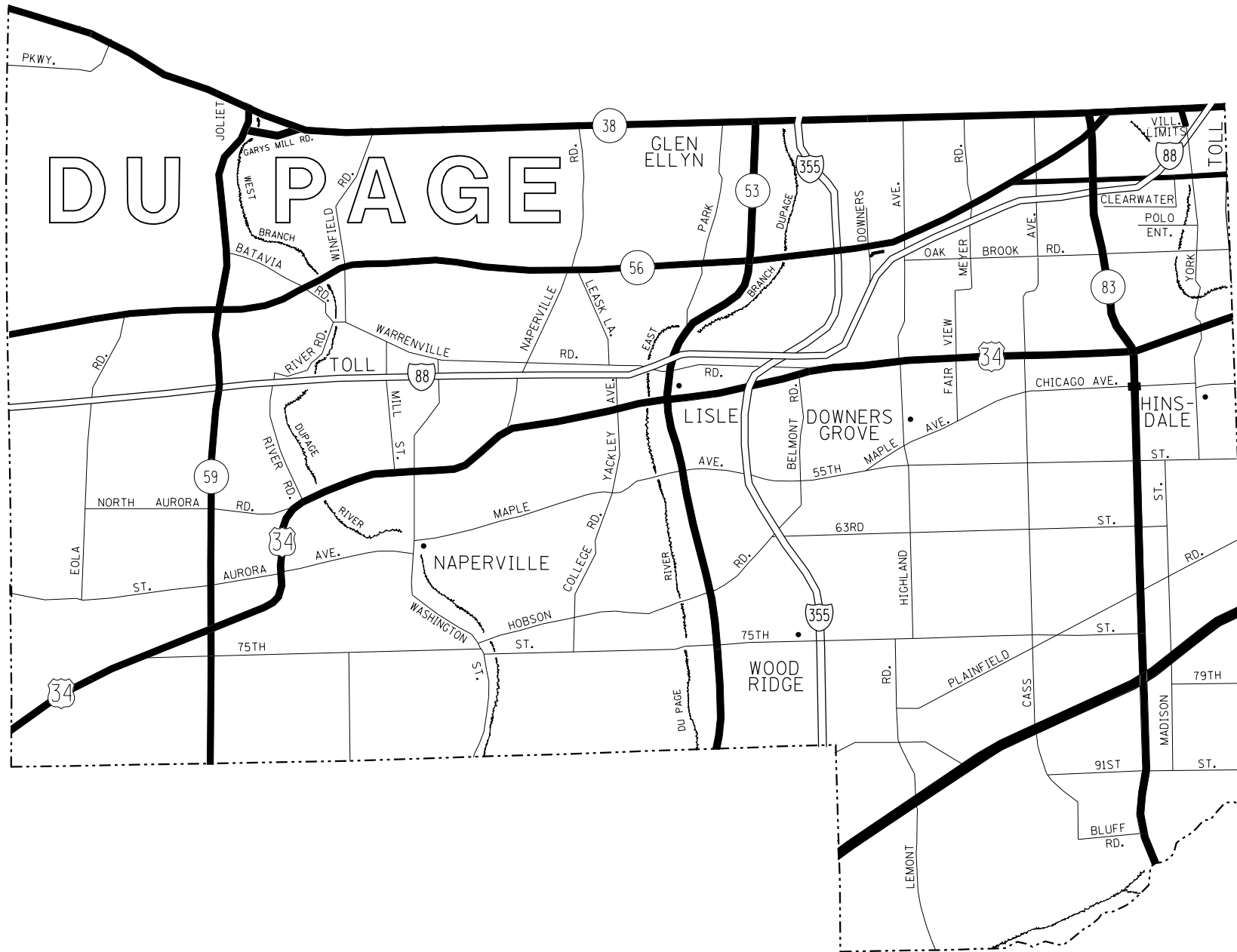
FILE NAME =	USER NAME = MaldonadoHM	DESIGNED -	REVISED -
c:\pw_work\p1dot\maldonadohm\d0365324\	D109514-Design.dgn	DRAWN -	REVISED -
Default	PLOT SCALE = 100.0053' / in.	CHECKED -	REVISED -
	PLOT DATE = 10/24/2013	DATE -	REVISED -

STATE OF ILLINOIS
DEPARTMENT OF TRANSPORTATION

FENCE REPAIR LOCATION MAP - COOK COUNTY
SOUTH OF IL RTE 38

SCALE: SHEET OF SHEETS STA. TO STA.

F.A. RTE.	SECTION	COUNTY	TOTAL SHEETS	SHEET NO.
VAR	2013-0641	VARIOUS	13	4
CONTRACT NO. 60X43				
ILLINOIS FED. AID PROJECT				



DISTRICT NO. 1
MAINTENANCE DESIGNATIONS

- VARIOUS COLORS STATE HIGHWAYS & EXPRESSWAYS
- TOLLWAY
- CITY MAINTENANCE AGREEMENTS
- FUTURE HIGHWAYS
- VARIOUS AGENCIES HIGHWAYS

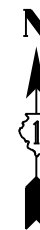
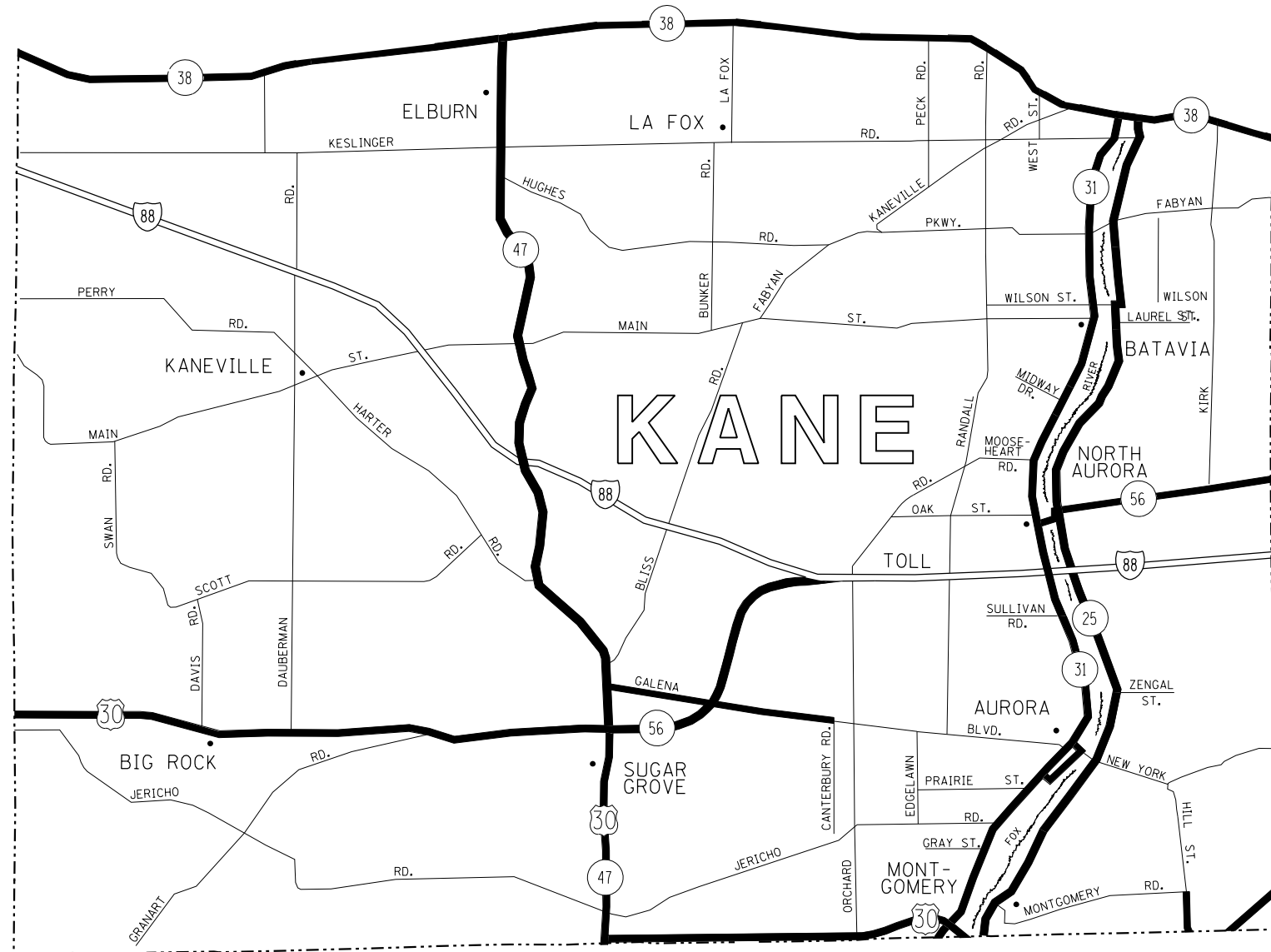
FILE NAME =	USER NAME = MaldonadoHM	DESIGNED -	REVISED -
et:\pw\work\p\dot\maldonadohm\d0365324\0109514-Design.dgn		DRAWN -	REVISED -
Default	PLOT SCALE = 100.0014' / in.	CHECKED -	REVISED -
	PLOT DATE = 10/24/2013	DATE -	REVISED -

**STATE OF ILLINOIS
DEPARTMENT OF TRANSPORTATION**

**FENCE REPAIR LOCATION MAP - DuPAGE COUNTY
SOUTH OF IL RTE 38**

SCALE: SHEET OF SHEETS STA. TO STA.

F.A. RTE.	SECTION	COUNTY	TOTAL SHEETS	SHEET NO.
VAR	2013-064I	VARIOUS	13	5
CONTRACT NO. 60X43			ILLINOIS FED. AID PROJECT	



DISTRICT NO. 1
MAINTENANCE DESIGNATIONS

- VARIOUS COLORS STATE HIGHWAYS & EXPRESSWAYS
- TOLLWAY
- CITY MAINTENANCE AGREEMENTS
- FUTURE HIGHWAYS
- VARIOUS AGENCIES HIGHWAYS

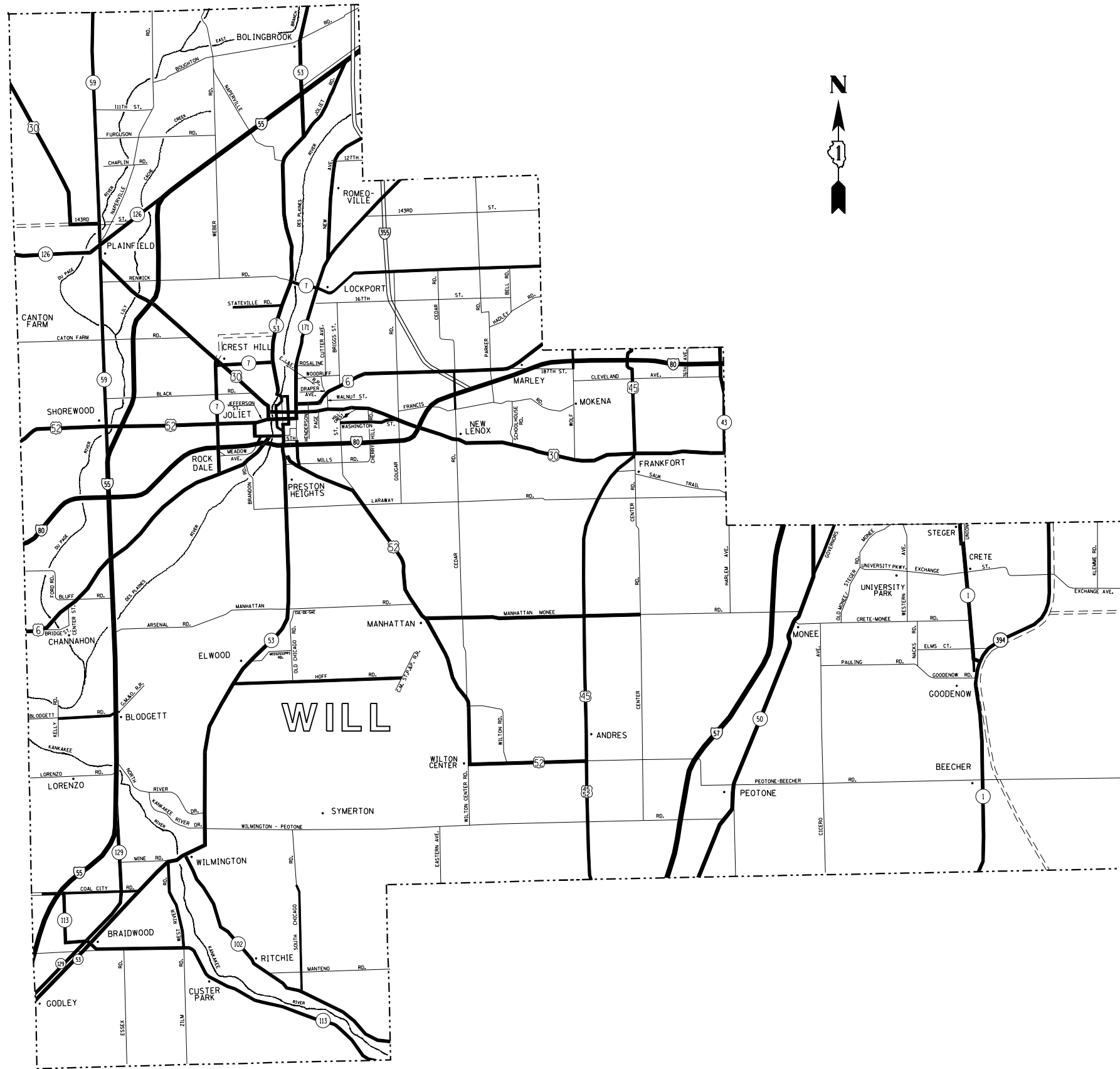
FILE NAME =	USER NAME = MaldonadoHM	DESIGNED -	REVISED -
ct:\pw\work\p\dot\maldonadohm\d0365324\	D109514-Design.dgn	DRAWN -	REVISED -
Default	PLOT SCALE = 100.0020' / in.	CHECKED -	REVISED -
	PLOT DATE = 10/24/2013	DATE -	REVISED -

STATE OF ILLINOIS
DEPARTMENT OF TRANSPORTATION

FENCE REPAIR LOCATION MAP - KANE COUNTY
SOUTH OF IL RTE 38

SCALE: SHEET OF SHEETS STA. TO STA.

F.A. RTE.	SECTION	COUNTY	TOTAL SHEETS	SHEET NO.
VAR	2013-064I	VARIOUS	13	6
			CONTRACT NO. 60X43	
ILLINOIS FED. AID PROJECT				



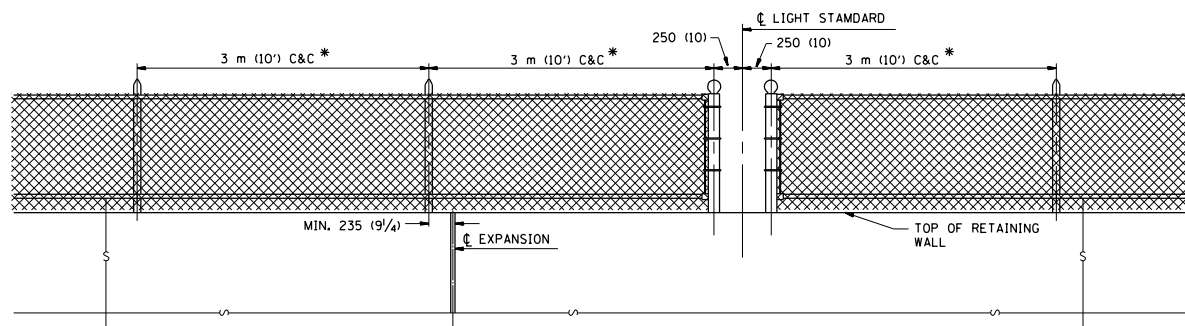
DISTRICT NO. 1 MAINTENANCE DESIGNATIONS

- VARIOUS COLORS STATE HIGHWAYS & EXPRESSWAYS
- TOLLWAY
- CITY MAINTENANCE AGREEMENTS
- FUTURE HIGHWAYS
- VARIOUS AGENCIES HIGHWAYS

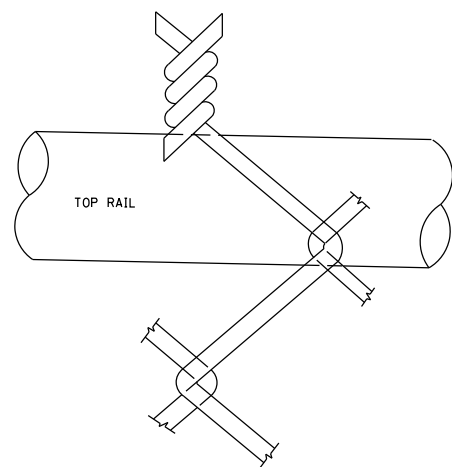
FILE NAME =	USER NAME = MaldonadoHM	DESIGNED -	REVISED -	STATE OF ILLINOIS DEPARTMENT OF TRANSPORTATION	FENCE REPAIR LOCATION MAP - WILL COUNTY		F.A. RTE.	SECTION	COUNTY	TOTAL SHEETS	SHEET NO.					
Default	ct:\pw\work\p\dot\mal\donad\dm\0365324\0109514-Design.dgn	DRAWN -	REVISED -		SCALE:	SHEET	OF	SHEETS	STA.	TO	STA.	VAR	2013-064I	VARIOUS	13	7
	PLOT SCALE = 100.0017' / in.	CHECKED -	REVISED -													
	PLOT DATE = 10/24/2013	DATE -	REVISED -													
												CONTRACT NO. 60X43		ILLINOIS FED. AID PROJECT		

NOTE

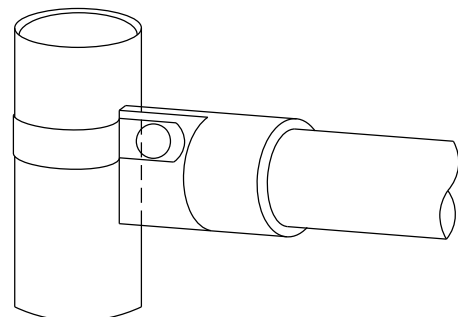
* MAXIMUM POST SPACING SHALL BE 3 m (10') C&C EXCEPT WHERE OTHERWISE SHOWN ON PLANS



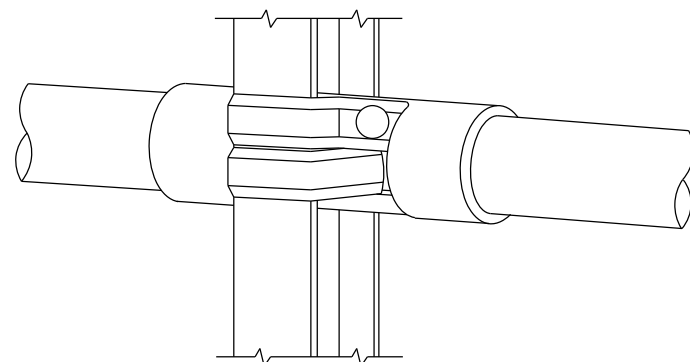
ELEVATION VIEW OF RETAINING WALL WITH PEDESTRIAN BARRIER TYPE III



WIRE MESH FABRIC TO BE BARBED AT THE TOP

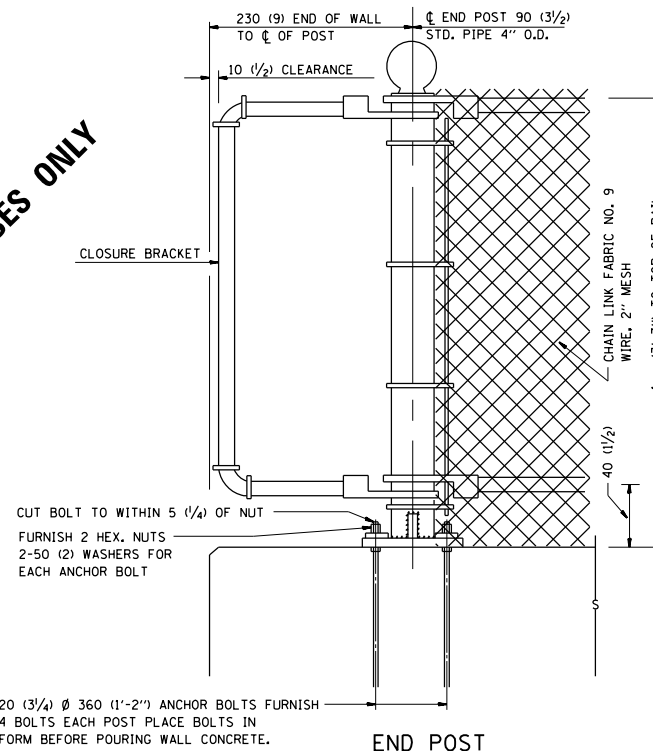


RAIL FITTING AT END POSTS



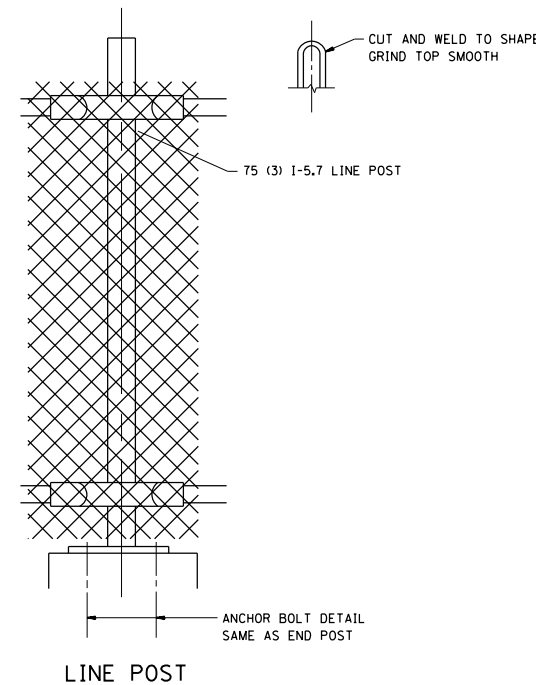
RAIL FITTING ON SECTION LINE POST

FOR INFORMATIONAL PURPOSES ONLY

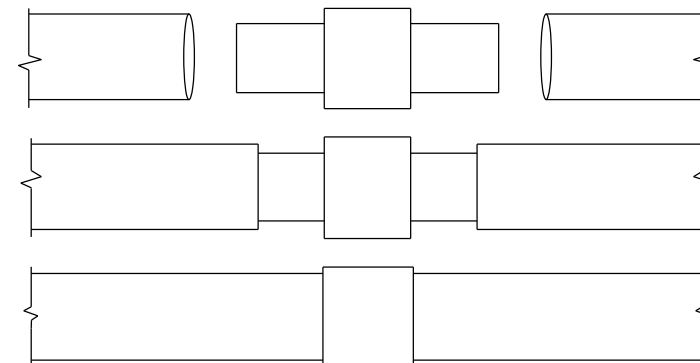


END POST

NOTE:
THE COST OF FURNISHING ANCHOR BOLTS, NUTS, & WASHERS TO BE INCIDENTAL

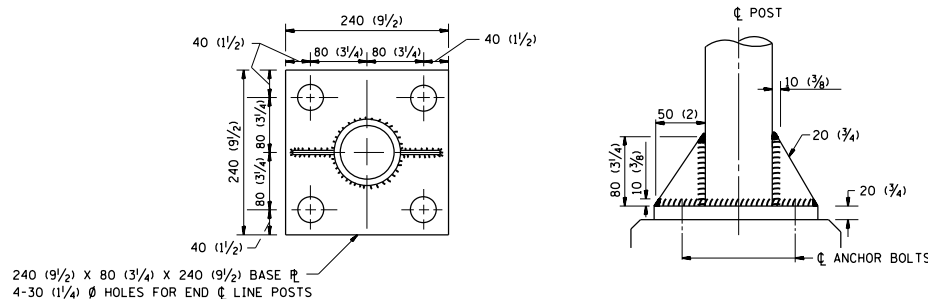


LINE POST



EXPANSION COUPLING DETAIL

NOTE:
EXP. COUPLING TO APPEAR IN TOP AND BOTTOM RAILS WHERE EVER EXP. JT. APPEARS IN STRUCTURE.

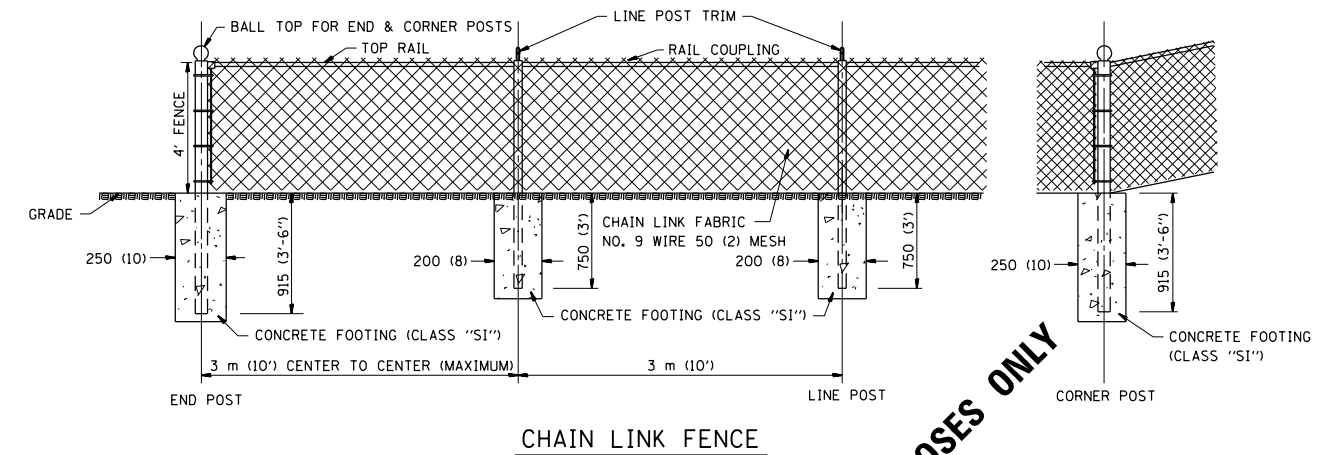


ANCHOR PLATE DETAILS

NOTE:
POST, PLATE AND GUSSET ASSEMBLY SHALL BE GALVANIZED AFTER ALL CUTTING, DRILLING, WELDING, AND FABRICATION HAVE BEEN COMPLETED. THE GALVANIZED COATING SHALL CONFORM TO THE REQUIREMENTS OF AASHTO M 120. THE GALVANIZED COATING SHALL NOT BE LESS THAN 610 G/SQ M (2.0 OZ./SQ. FT.) OF SURFACE.

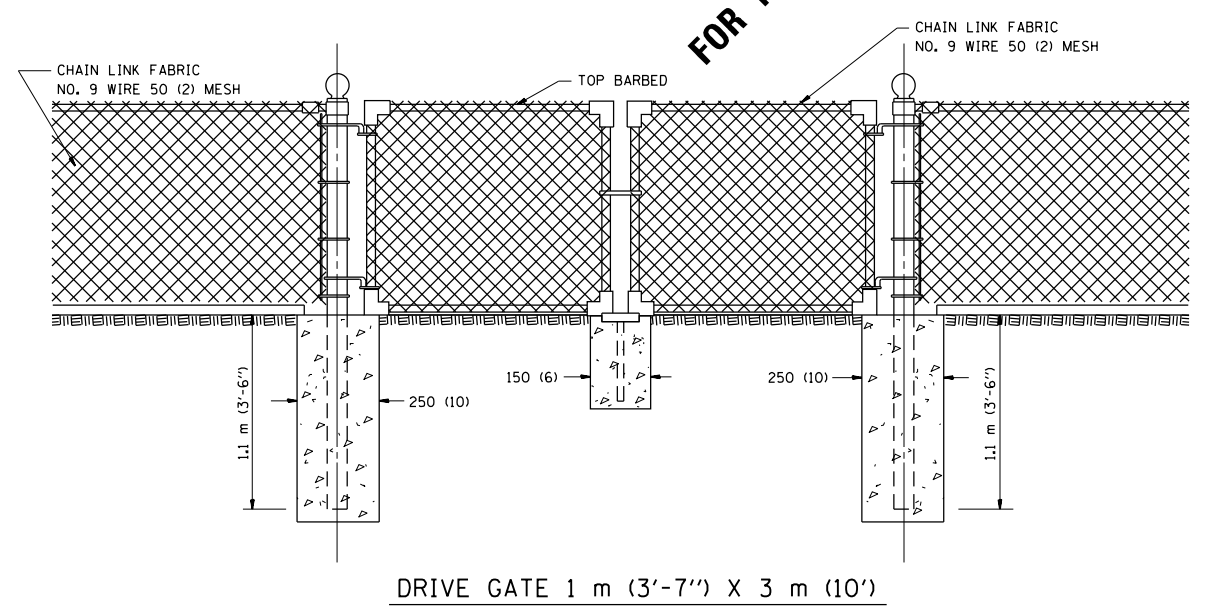
ALL DIMENSIONS ARE IN MILLIMETERS (INCHES) UNLESS OTHERWISE SHOWN.

FILE NAME =	USER NAME = MaldonadoHM	DESIGNED -	REVISED -	STATE OF ILLINOIS DEPARTMENT OF TRANSPORTATION	PEDESTRIAN BARRIER TYPE III STD. 10-SS-514 R				F.A. RTÉ.	SECTION	COUNTY	TOTAL SHEETS	SHEET NO.
ei:\pw\work\p\dot\maldonadohm\d0365324\0109514-Design.dgn		DRAWN -	REVISED -						VAR	2013-0641	VARIOUS	13	8
PLOT SCALE = 100.0054' / 111.		CHECKED -	REVISED -		CONTRACT NO. 60X43								
PLOT DATE = 10/24/2013		DATE -	REVISED -		FED. ROAD DIST. NO.	ILLINOIS	FED. AID PROJECT						



CHAIN LINK FENCE

FOR INFORMATIONAL PURPOSES ONLY



DRIVE GATE 1 m (3'-7") X 3 m (10')

ALL DIMENSIONS ARE IN MILLIMETERS (INCHES) UNLESS OTHERWISE SHOWN.

NOTE:
 THE CHAIN LINK FENCE AS SHOWN HEREIN SHALL BE CONSTRUCTED AT SUCH LOCATIONS AS SHOWN ON PLANS AND IN ACCORDANCE WITH THE SPECIAL PROVISIONS
 THE ENGINEER SHALL ESTABLISH ALL NECESSARY LINE AND GRADE PRIOR TO THE ERECTION OF THE FENCE IN CONFORMANCE WITH THE PLANS

FILE NAME =	USER NAME = MaldonadoHM	DESIGNED -	REVISED -
et:\pw\work\p\dot\maldonadohm\d0365324\0109514-Design.dgn		DRAWN -	REVISED -
	PLOT SCALE = 100.0010' / in.	CHECKED -	REVISED -
	PLOT DATE = 10/24/2013	DATE -	REVISED -

STATE OF ILLINOIS
 DEPARTMENT OF TRANSPORTATION

CHAIN LINK FENCE
 STD. 10-SS-506 B

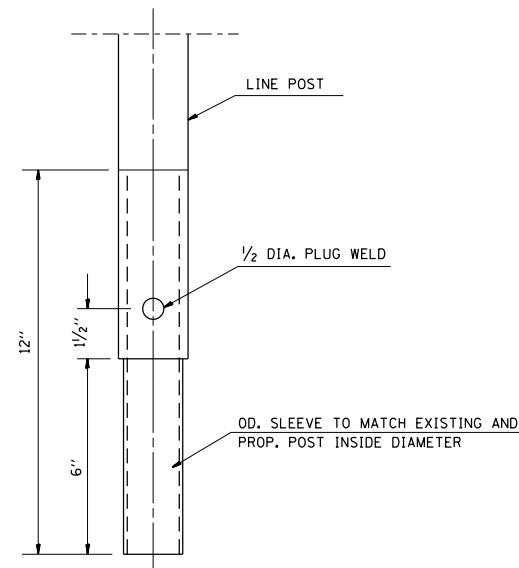
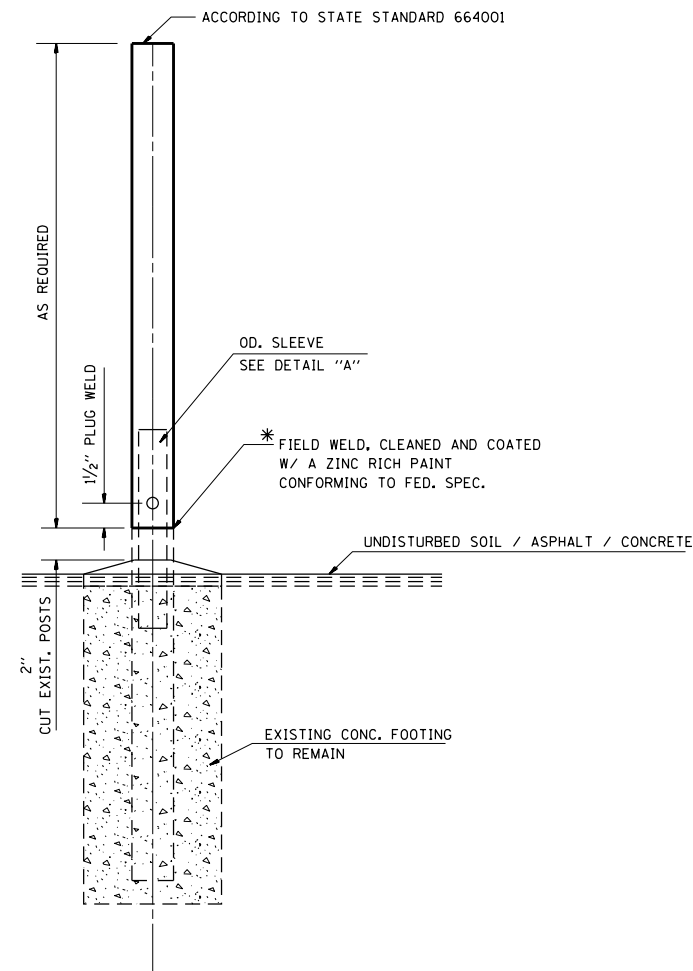
SCALE:	SHEET NO.	OF SHEETS	STA.	TO STA.
--------	-----------	-----------	------	---------

F.A. RTE.	SECTION	COUNTY	TOTAL SHEETS	SHEET NO.
VAR	2013-0641	VARIOUS	13	9
FED. ROAD DIST. NO.			ILLINOIS FED. AID PROJECT	
CONTRACT NO. 60X43				

GENERAL NOTES:

THIS WORK CONSISTS OF FURNISHING ALL LABOR, MATERIALS, TOOLS AND EQUIPMENT TO REPAIR CHAIN LINK FENCE POST SLEEVE AS SHOWN ON THE PLANS OR AS DIRECTED BY THE ENGINEER, AND IN ACCORDANCE WITH STATE STANDARD 664001.

BASIS OF PAVEMENT: THIS WORK SHALL BE PAID FOR AT THE CONTRACT UNIT PRICE EACH FOR "CHAIN LINK FENCE POST SLEEVE REPAIR" WHICH PRICE SHALL BE PAYMENT IN FULL TO COMPLETE THE WORK AS SPECIFIED HEREIN.



SLEEVE DET. DWG
DETAIL "A"
SLEEVE DETAIL

* THIS WORK SHALL BE INCLUDED IN THE COST OF THE PAY ITEM "CHAIN LINK FENCE POST SLEEVE REPAIR"

FILE NAME =	USER NAME = MaldonadoHM	DESIGNED -	REVISED -
c:\pwwork\pwwork\maldonadohm\d0365324\0109514-Design.dgn		DRAWN -	REVISED -
PLOT SCALE = 100.0035' / in.		CHECKED -	REVISED -
PLOT DATE = 10/24/2013		DATE -	REVISED -

**STATE OF ILLINOIS
DEPARTMENT OF TRANSPORTATION**

**CHAIN LINK FENCE POST SLEEVE
REPAIR DETAIL**

SCALE: SHEET NO. OF SHEETS STA. TO STA.

F.A. RTE.	SECTION	COUNTY	TOTAL SHEETS	SHEET NO.
VAR	2013-0641	VARIOUS	13	10
FED. ROAD DIST. NO. ILLINOIS FED. AID PROJECT			CONTRACT NO. 60X43	

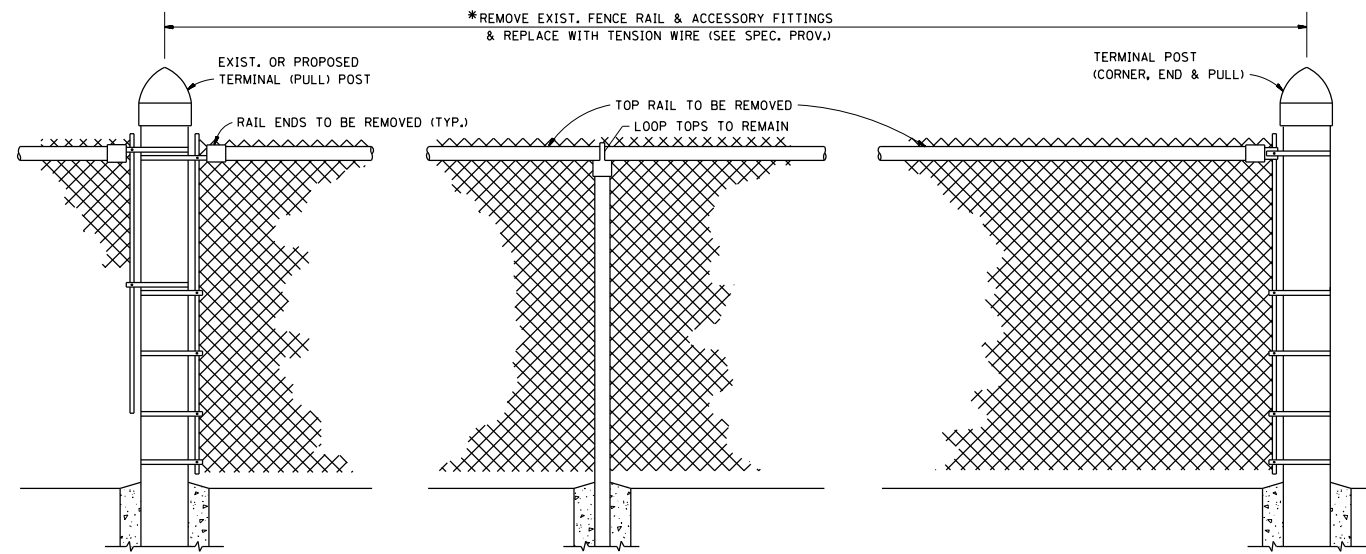
GENERAL NOTES

FENCE RAIL REMOVAL: THIS ITEM CONSISTS OF REMOVING EXISTING TOP OR BOTTOM RAIL, (DAMAGED OR UNDAMAGED) AND REPLACING WITH TENSION WIRE. BOTTOM TENSION WIRE SHALL BE CONSIDERED INCIDENTAL EXCEPT AT LOCATIONS OF EXISTING BOTTOM RAIL REMOVAL.

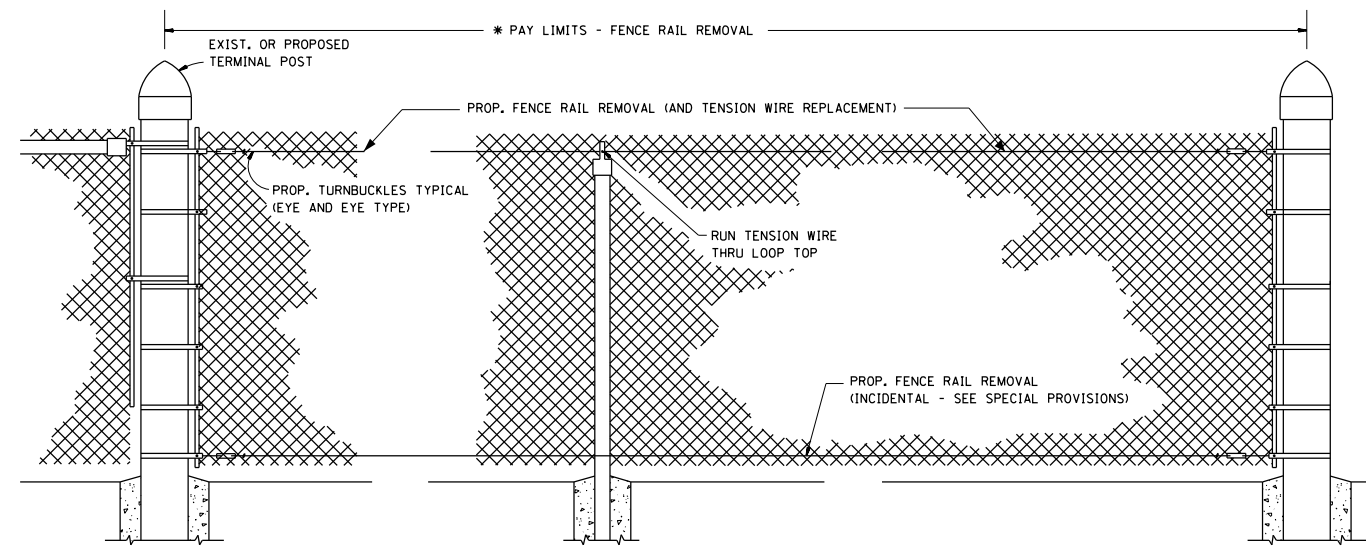
TENSION WIRE: THIS ITEM CONSISTS OF INSTALLING TENSION WIRE, TOP OR BOTTOM, WHERE TOP OR BOTTOM RAIL IS NON-EXISTENT, OR WHERE EXISTING DAMAGED TENSION WIRE IS REMOVED AND REPLACED BY NEW TENSION WIRE.

ALL WORK AND MATERIALS SHALL BE IN ACCORDANCE WITH THE PLANS, SPECIAL PROVISIONS, STANDARD SPECIFICATIONS AND STANDARD 664001.

REPLACEMENT OF OTHER FENCE COMPONENT PARTS SHALL BE MEASURED AND PAID FOR SEPARATELY AS DESCRIBED IN THE SPECIAL PROVISIONS.

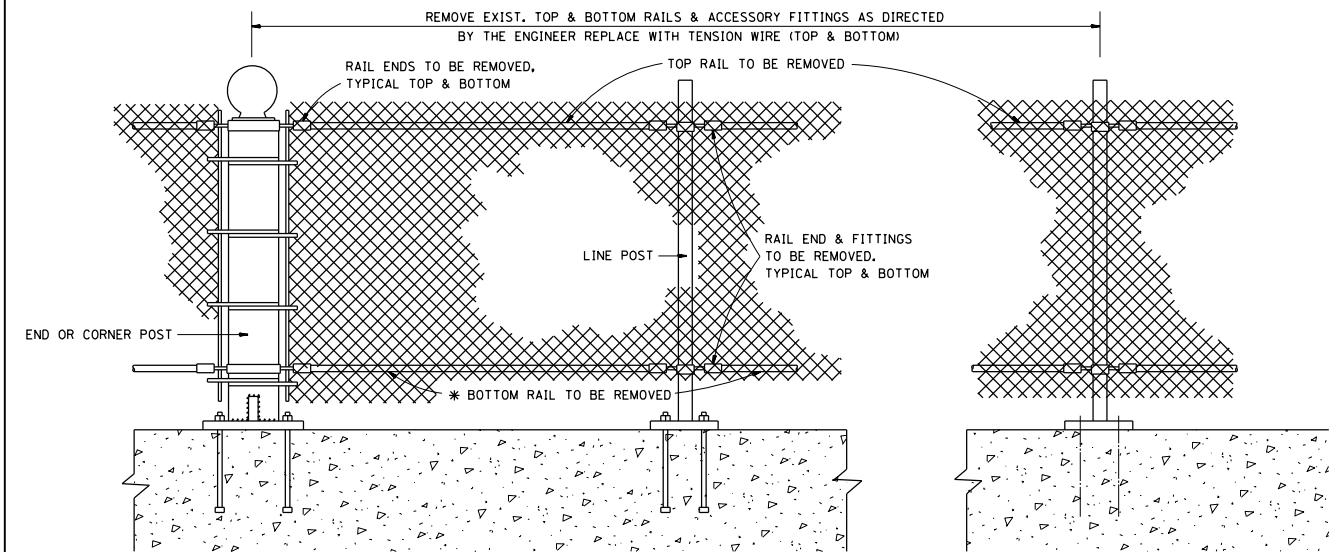


EXIST. CHAIN LINK FENCE WITH TOP RAIL

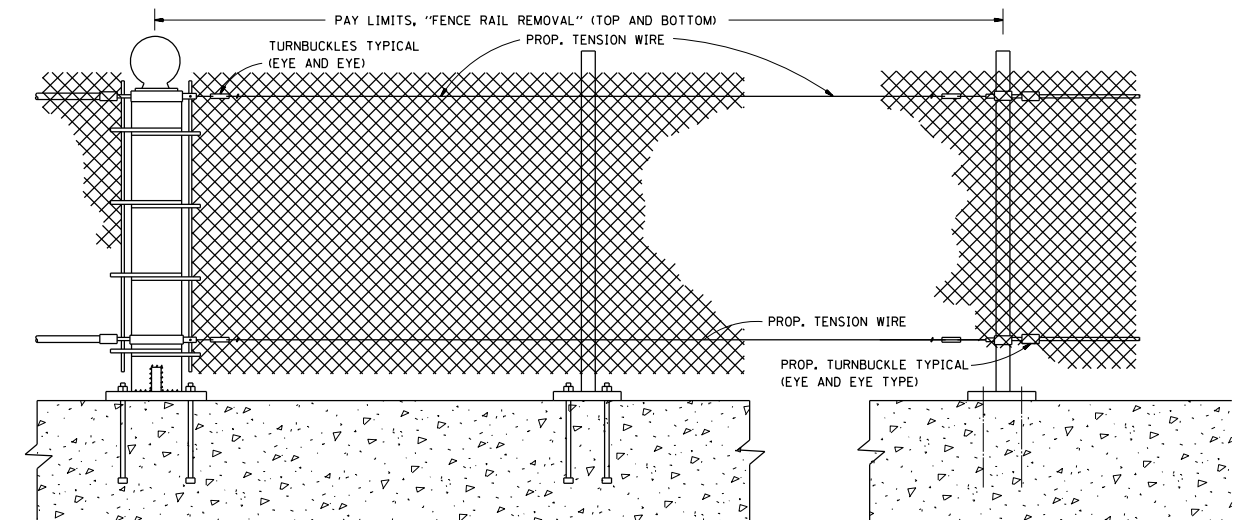


PROP. CHAIN LINK FENCE WITH "FENCE RAIL REMOVAL"

* THE ENGINEER IN CHARGE SHALL DETERMINE THE LENGTH OF FENCE RAIL TO BE REMOVED & REPLACED WITH "TENSION WIRE"



EXIST. PEDESTRIAN BARRIER TYPE 3 WITH TOP AND BOTTOM RAILS



PROP. PEDESTRIAN BARRIER TYPE 3 WITH FENCE RAIL REMOVAL

ALL DIMENSIONS ARE IN MILLIMETERS (INCHES) UNLESS OTHERWISE SHOWN.

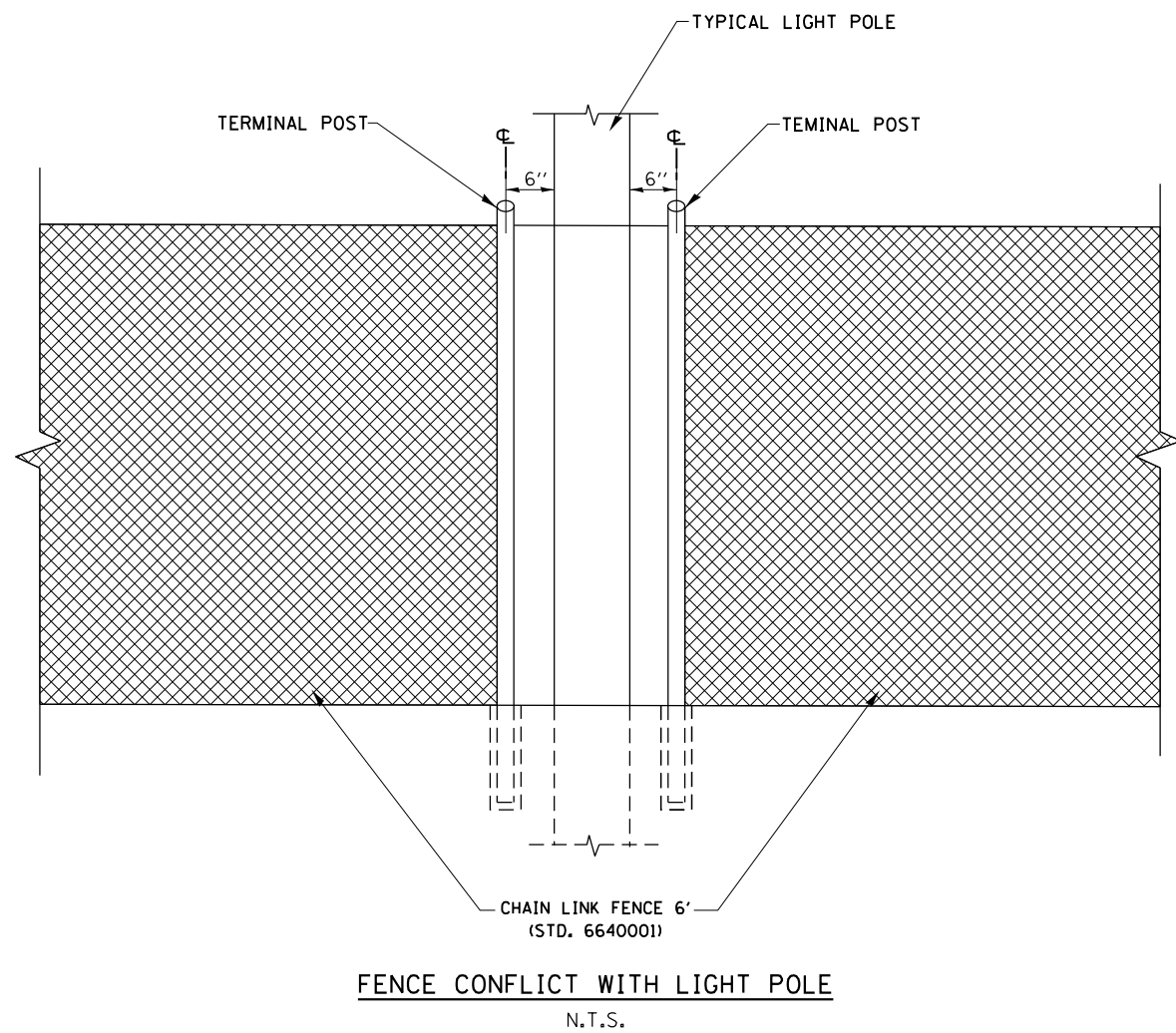
FILE NAME =	USER NAME = MaldonadoHM	DESIGNED -	REVISED -
ci:\pw\work\p\dot\maldonadohm\d0365324\0109514-Design.dgn		DRAWN -	REVISED -
	PLOT SCALE = 99.9962' / in.	CHECKED -	REVISED -
	PLOT DATE = 10/24/2013	DATE -	REVISED -

**STATE OF ILLINOIS
DEPARTMENT OF TRANSPORTATION**

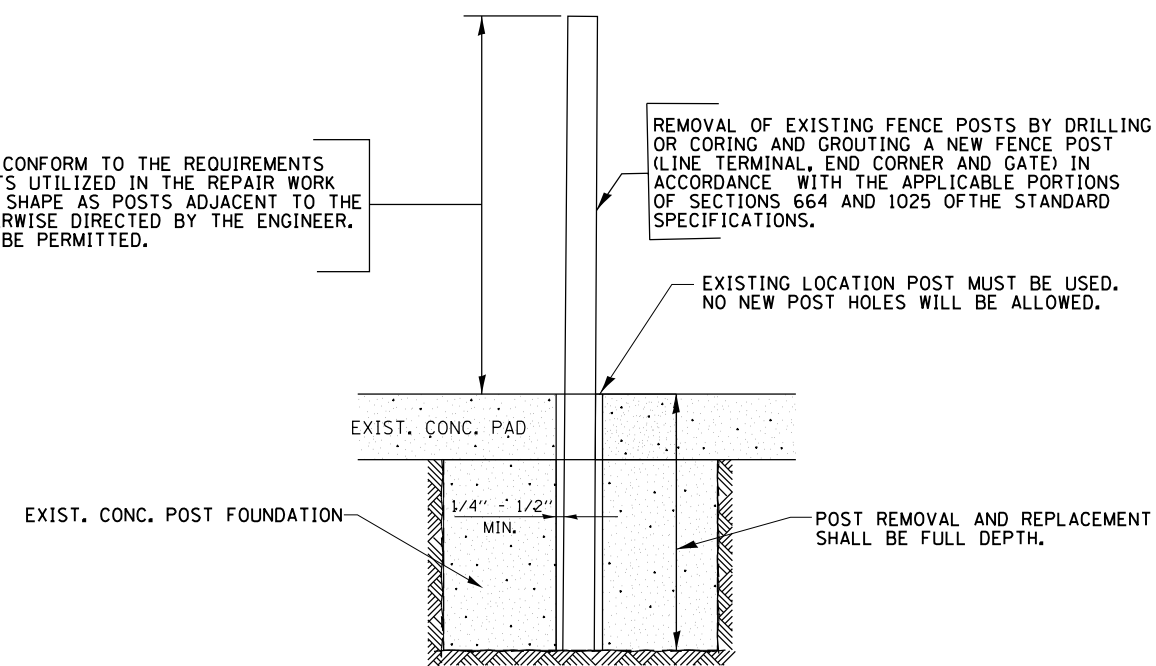
**PROPOSED PEDESTRIAN BARRIER AND
CHAIN LINK FENCE WITH TENSION WIRE AND FENCE RAIL REMOVAL**

SCALE: SHEET NO. OF SHEETS STA. TO STA.

F.A. RTE.	SECTION	COUNTY	TOTAL SHEETS	SHEET NO.
VAR	2013-0641	VARIOUS	13	11
CONTRACT NO. 60X43				
FED. ROAD DIST. NO. ILLINOIS FED. AID PROJECT				



GALVANIZED POSTS SHALL CONFORM TO THE REQUIREMENTS OF STANDARD 864001 POSTS UTILIZED IN THE REPAIR WORK SHALL BE THE SAME TYPE SHAPE AS POSTS ADJACENT TO THE REPAIR AREA UNLESS OTHERWISE DIRECTED BY THE ENGINEER. NO USED MATERIALS WILL BE PERMITTED.



FILE NAME =	USER NAME = MaldonadoHM	DESIGNED -	REVISED -
et:\pw\work\p\dot\maldonadohm\d0365324\0109514-Design.dgn		DRAWN -	REVISED -
Default	PLOT SCALE = 100.0063' / in.	CHECKED -	REVISED -
	PLOT DATE = 10/24/2013	DATE -	REVISED -

**STATE OF ILLINOIS
DEPARTMENT OF TRANSPORTATION**

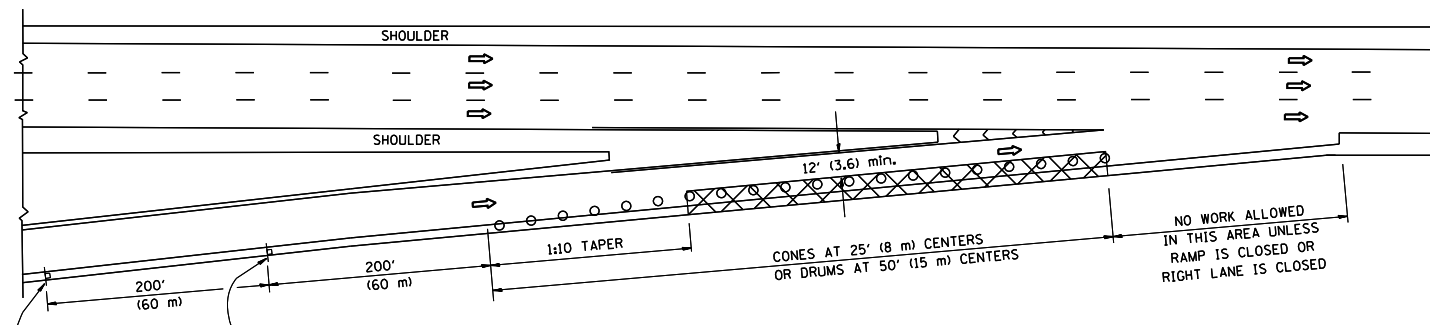
SPECIAL FENCE DETAILS

SCALE: SHEET OF SHEETS STA. TO STA.

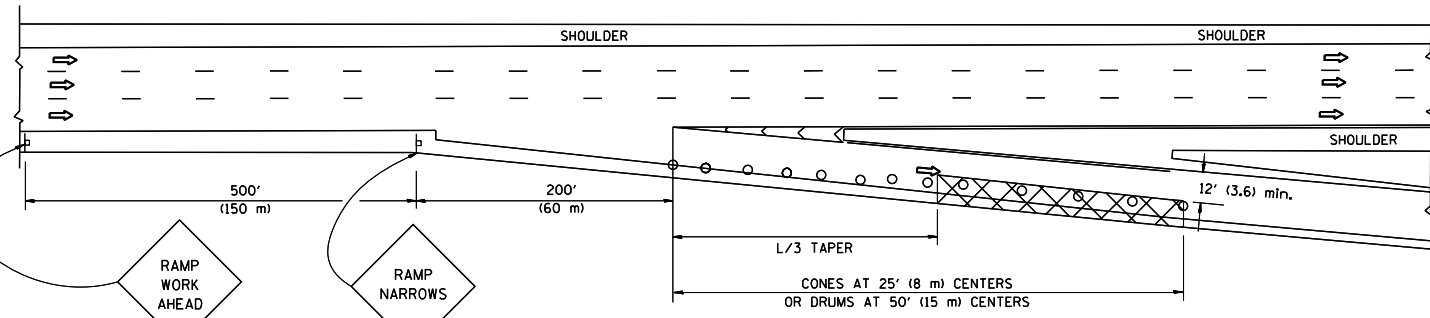
F.A. RTE.	SECTION	COUNTY	TOTAL SHEETS	SHEET NO.
VAR	2013-064I	VARIOUS	13	12
CONTRACT NO. 60X43			ILLINOIS FED. AID PROJECT	

PARTIAL RAMP CLOSURE DETAILS

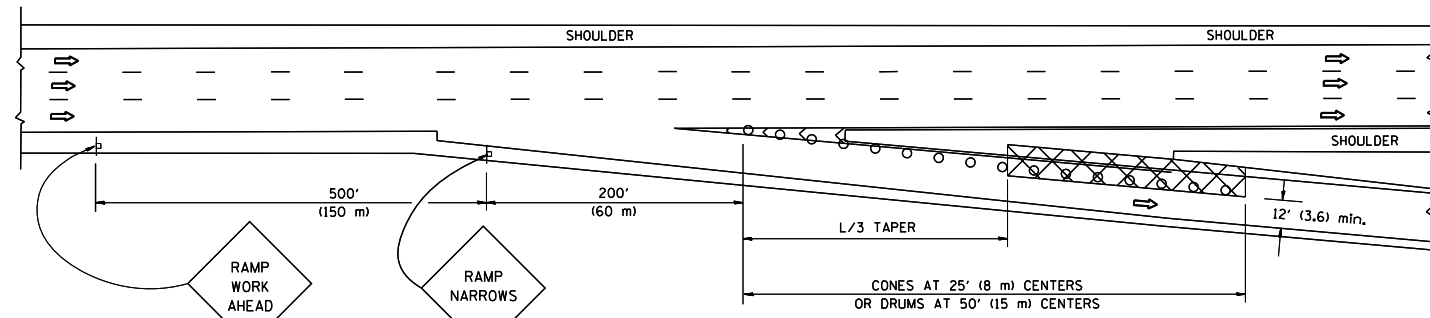
SHOULDER CLOSURE DETAILS



TYPICAL ENTRANCE RAMP



TYPICAL EXIT RAMP



TYPICAL EXIT RAMP

SYMBOLS

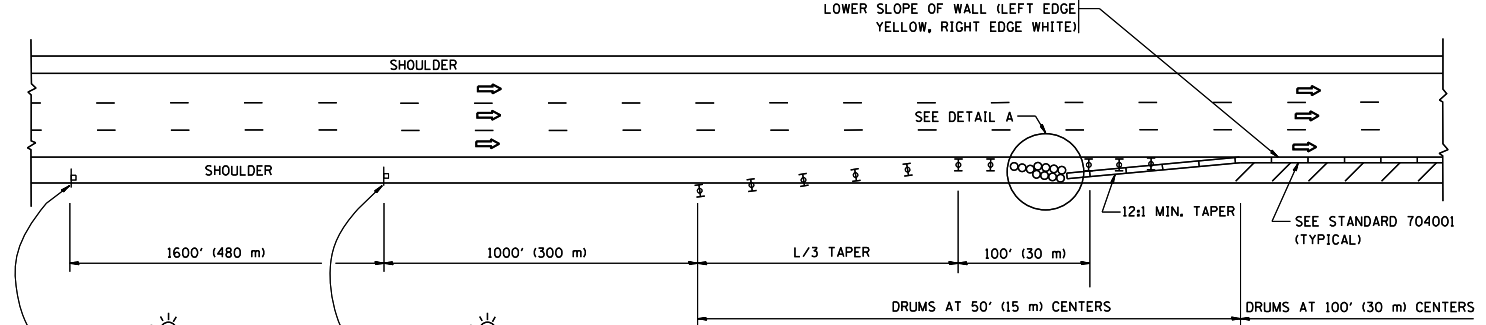
- ACTIVE WORK AREA
- SIGN ON PORTABLE OR PERMANENT SUPPORT
- FLAGGER WITH CONTROL SIGN
- TYPE II BARRICADE, DRUM OR VERTICAL BARRICADE WITH STEADY BURN MONO-DIRECTIONAL LIGHT
- CONE, DRUM OR BARRICADE

GENERAL NOTES

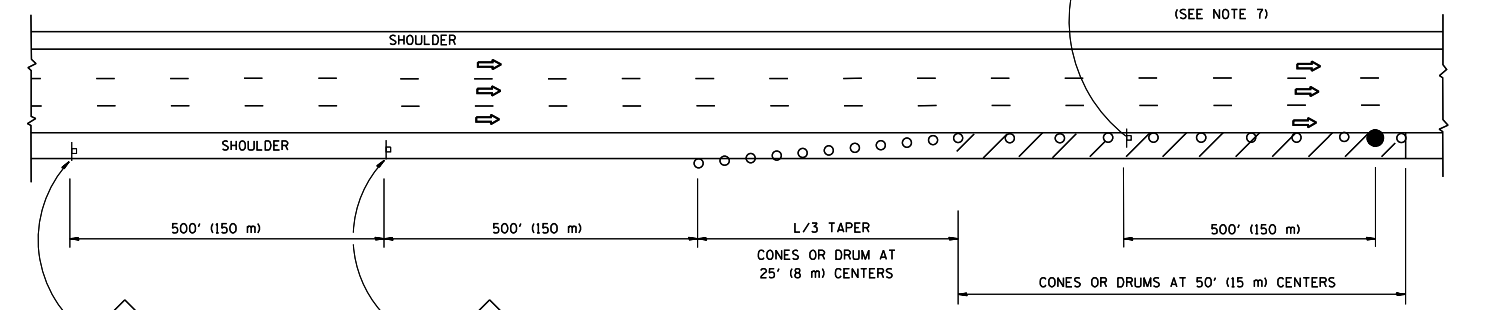
1. THE "L" DISTANCE EQUALS:

SPEED LIMIT	FORMULAS
45 mph (80 km/h) OR GREATER:	METRIC ENGLISH
	$L=0.65(W)(S)$ $L=(W)(S)$

W = WIDTH OF OFFSET IN FEET (METERS)
S = NORMAL POSTED SPEED MPH (KM/H)
2. PLASTIC DRUMS WITH HIGH PERFORMANCE REFLECTIVE SHEETING AND STEADY BURNING LIGHTS ARE REQUIRED FOR ALL NIGHTTIME CLOSURES.
3. ALL SIGNS SHALL BE POST MOUNTED IF THE CLOSURE TIME EXCEEDS FOUR DAYS.
4. FLASHING LIGHTS SHALL BE USED DURING THE HOURS OF DARKNESS AND SHALL BE INSTALLED ABOVE THE FIRST TWO SETS OF SIGNS.

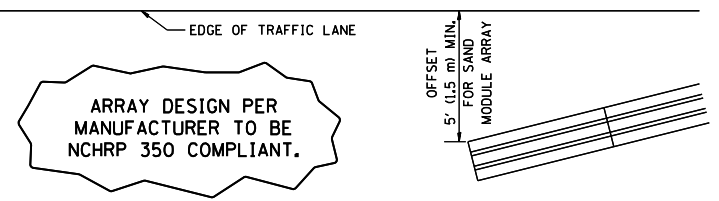


PERMANENT SHOULDER CLOSURE



DAYTIME SHOULDER CLOSURE

THIS DETAIL IS USED WHERE:
1. VEHICLES, EQUIPMENT, WORKERS OR THEIR ACTIVITIES ENCROACH IN AN AREA CLOSER THAN 15' (4.5 m) TO THE EDGE OF PAVEMENT FOR A PERIOD IN EXCESS OF 15 MINUTES.



DETAIL "A"
IMPACT ATTENUATOR, TEMPORARY
(SEE NOTE 5)

5. THE IMPACT ATTENUATOR, TEMPORARY IS NOT REQUIRED WHEN THE TEMPORARY CONCRETE BARRIER WALL IS PROTECTED BY OR IS TIED INTO THE EXISTING GUARDRAIL. IF OFFSET IS LESS THAN 5 FEET USE NARROW USE TYPE DEVICE TO MEET NCHRP350.
6. AUTHORIZATION FROM THE DISTRICT'S BUREAU OF TRAFFIC IS REQUIRED FOR ALL FREEWAY CLOSURES.
7. THE FLAGGER AND FLAGGER SIGN ARE REQUIRED AT THE ABOVE WORK SITES WHEN:
 - a. FOUR OR MORE WORK VEHICLES ENTER THE TRAFFIC LANES IN A ONE HOUR PERIOD.
 - b. THE WORK ACTIVITY REQUIRES FREQUENT ENCROACHMENT INTO THE LANE OPEN TO TRAFFIC.

THE FLAGGER SHALL BE STATIONED APPROXIMATELY 100' (30 m) TO 200' (60 m) IN ADVANCE OF THE WORKERS.

ALL DIMENSIONS ARE IN INCHES (MILLIMETERS) UNLESS OTHERWISE SHOWN.

FILE NAME =	USER NAME = MaldonadoHM	DESIGNED -	REVISED - 04-03	STATE OF ILLINOIS DEPARTMENT OF TRANSPORTATION	TRAFFIC CONTROL DETAILS FOR FREEWAY SHOULDER CLOSURES AND PARTIAL RAMP CLOSURES			F.A. RTE.	SECTION	COUNTY	TOTAL SHEETS	SHEET NO.	
ci:\pwwork\pwwork\maldonadohm\d0365324\0109514-Design.dgn		DRAWN - D.W.S.	REVISED - J.A.F. 12-06		SCALE: NONE	SHEET NO. 1 OF 1 SHEETS	STA.	TO STA.	VAR	2013-0641	VARIOUS	13	13
		CHECKED -	REVISED - S.P.B. 01-07						TC-17		CONTRACT NO. 60X43		
		DATE - 11-96	REVISED - S.P.B. 12-09						FED. ROAD DIST. NO. 1 ILLINOIS FED. AID PROJECT				