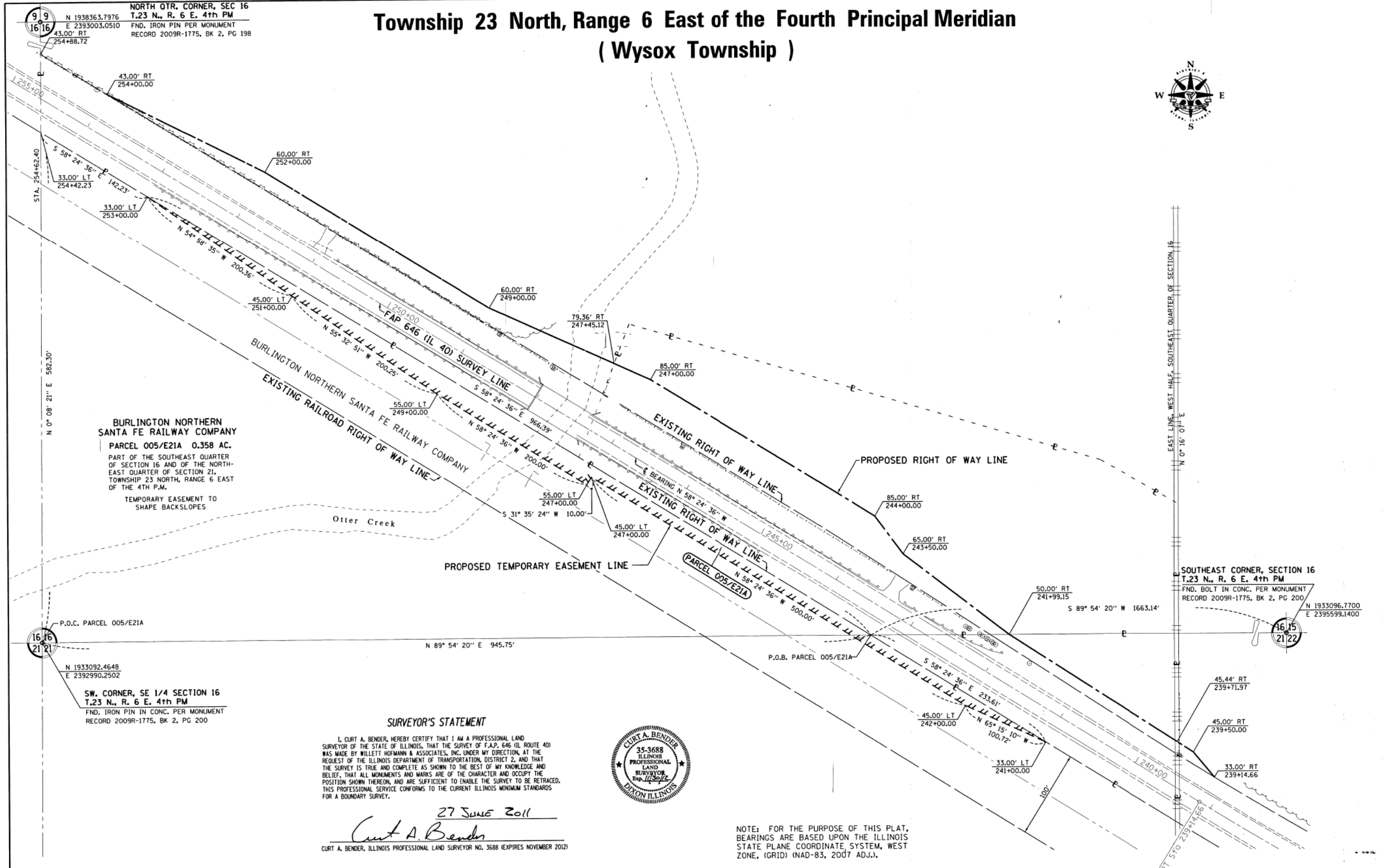


# Township 23 North, Range 6 East of the Fourth Principal Meridian ( Wysox Township )



9 9  
16 16  
N 1938363.7976  
E 2393003.0510  
43.00' RT  
254+88.72  
NORTH QTR. CORNER, SEC 16  
T.23 N., R. 6 E. 4th PM  
FND. IRON PIN PER MONUMENT  
RECORD 2009R-1775, BK 2, PG 198

SOUTHEAST CORNER, SECTION 16  
 T.23 N., R. 6 E. 4th PM  
 FND. BOLT IN CONC. PER MONUMENT  
 RECORD 2009R-1775, BK 2, PG 200  
 N 1933096.7700  
 E 2395599.1400

P.O.C. PARCEL 005/E21A  
 N 1933092.4648  
 E 2392990.2502  
 SW. CORNER, SE 1/4 SECTION 16  
 T.23 N., R. 6 E. 4th PM  
 FND. IRON PIN IN CONC. PER MONUMENT  
 RECORD 2009R-1775, BK 2, PG 200



DRAWER 45 FOLDER 2		WILLETT HOFMANN & ASSOCIATES INC. ENGINEERING ARCHITECTURE LAND SURVEYING 809 EAST 2ND STREET, DIXON, IL 61021-0367 T: 815-294-3381 DESIGN FIRM: #184-000919	REVISED -	<b>ILLINOIS DEPARTMENT OF TRANSPORTATION</b>	FAP ROUTE 646 (IL 40)	SECTION 16 & 21	COUNTY CARROLL JOB# R-92-021-09	
			REVISED -	<b>TEMPORARY EASEMENT PLAT</b>	SEC 5BR-3	T 23 N., R 6 E OF 4th P.M.	PROJECT# P-92-080-10	
			REVISED -		SCALE: 1" = 50'	SHEET NO. E21A	STA 241+00 TO STA 255+00	CONTRACT NO.
			REVISED -					

FILE NAME =	USER NAME = *USER*	DESIGNED - RAC	REVISED -	<b>STATE OF ILLINOIS DEPARTMENT OF TRANSPORTATION</b>		Zroka Engineering, P.C. 4216 North Hermitage Chicago, IL 60613	<b>RIGHT-OF-WAY PLANS</b>	F.A.P. RTE.	SECTION	COUNTY	TOTAL SHEETS	SHEET NO.
*FILE#		DRAWN - SAW	REVISED -					646	5 BR-3	CARROLL	84	23
PLOT SCALE = *SCALE*		CHECKED - DAZ	REVISED -					CONTRACT NO. 64DB4				
PLOT DATE = *DATE*		DATE - 10-11-13	REVISED -					ILLINOIS FED. AID PROJECT				