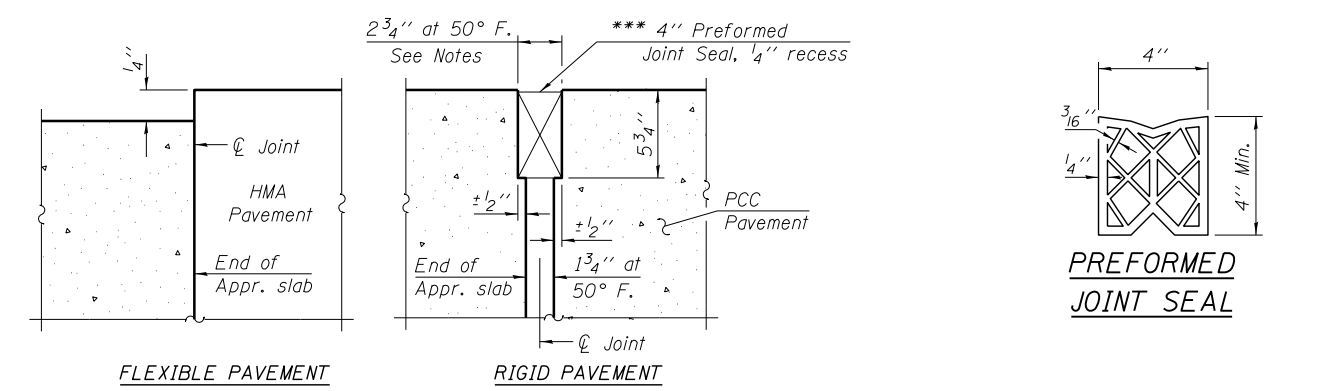
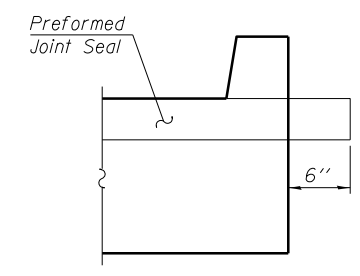


Notes:
 See sheet 12 of 19 for Sections C-C & D-D and View E-E.
 $a_{10}(E)$ and $a_{11}(E)$ bar spacings measured along CL Rdwy.
 The joint opening shall be determined per Article 520.04 except that on jointless structures, the distance described as the bridge length between the nearest fixed bearings each way from the joint shall be taken as half the bridge length plus the approach slab length. The minimum dimension shall be 1'2" for installation purposes.

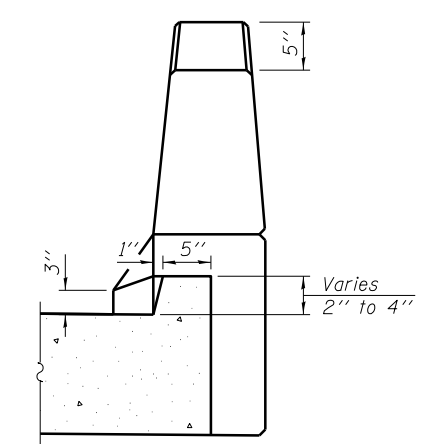
*** Cost included with Concrete Superstructure.



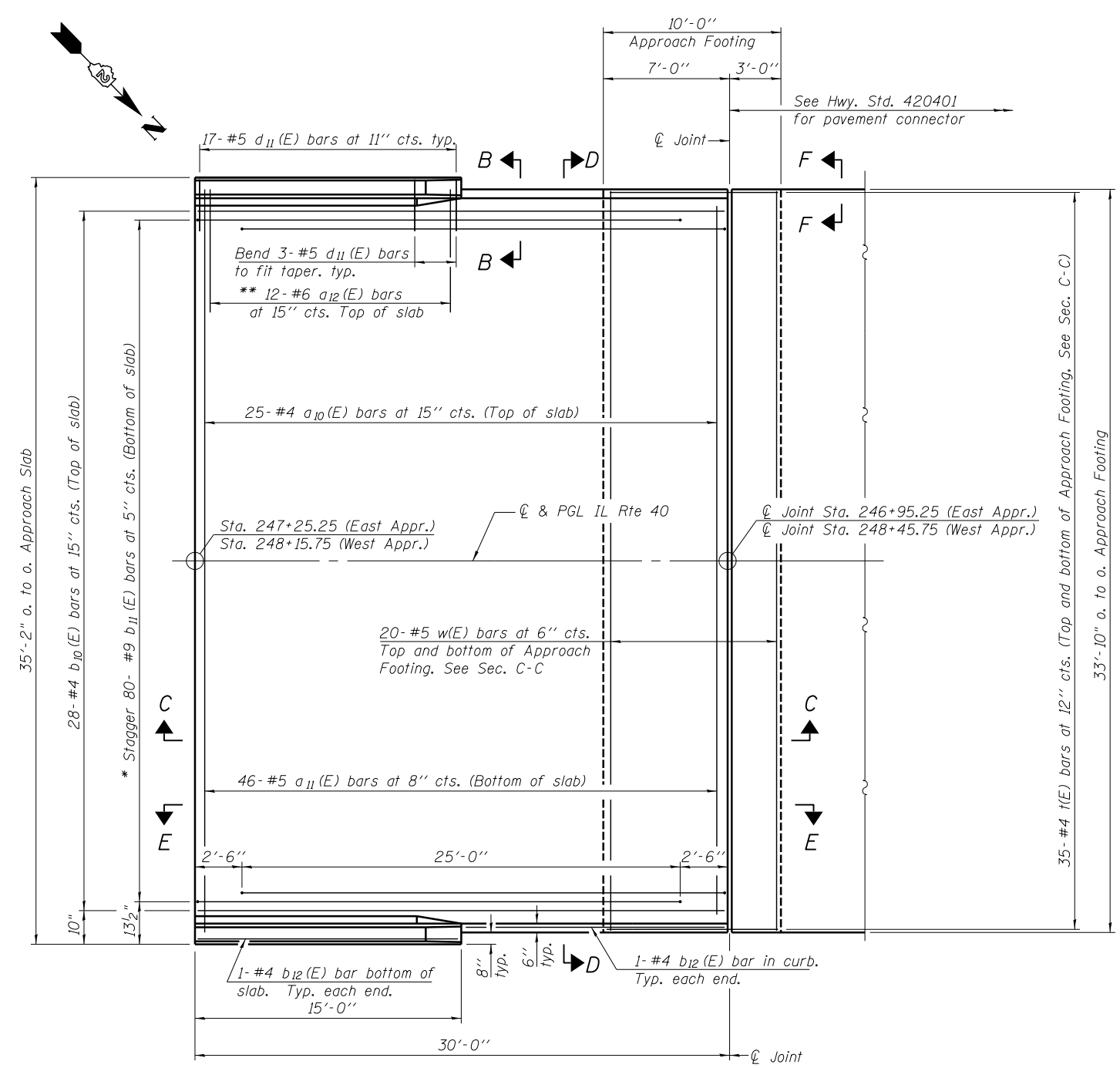
DETAIL A



VIEW F-F



VIEW B-B



PLAN

* Tilt #9 $b_{11}(E)$ bars as required to maintain clearance.
 ** Space between $a(E)$ bars, typ. ea. parapet.

BA-0 12-12-12



USER NAME = SAW	DESIGNED - PMM	REVISED -
PLOT SCALE = 0:2.0000 '1' / in.	CHECKED - DAZ	REVISED -
PLOT DATE = 8/1/2013	DRAWN - SAW	REVISED -
	CHECKED - PMM	REVISED -

STATE OF ILLINOIS
 DEPARTMENT OF TRANSPORTATION

BRIDGE APPROACH SLAB DETAILS 1
 S.N. 008-0051

SHEET NO. 11 OF 19 SHEETS

F.A.P. RTE.	SECTION	COUNTY	TOTAL SHEETS	SHEET NO.
646	5BR-3	CARROLL	84	34
CONTRACT NO. 64D84				

ILLINOIS FED. AID PROJECT

FILE NAME = ...E4DB4-SN0080051-011-Appr-Slab1.dgn