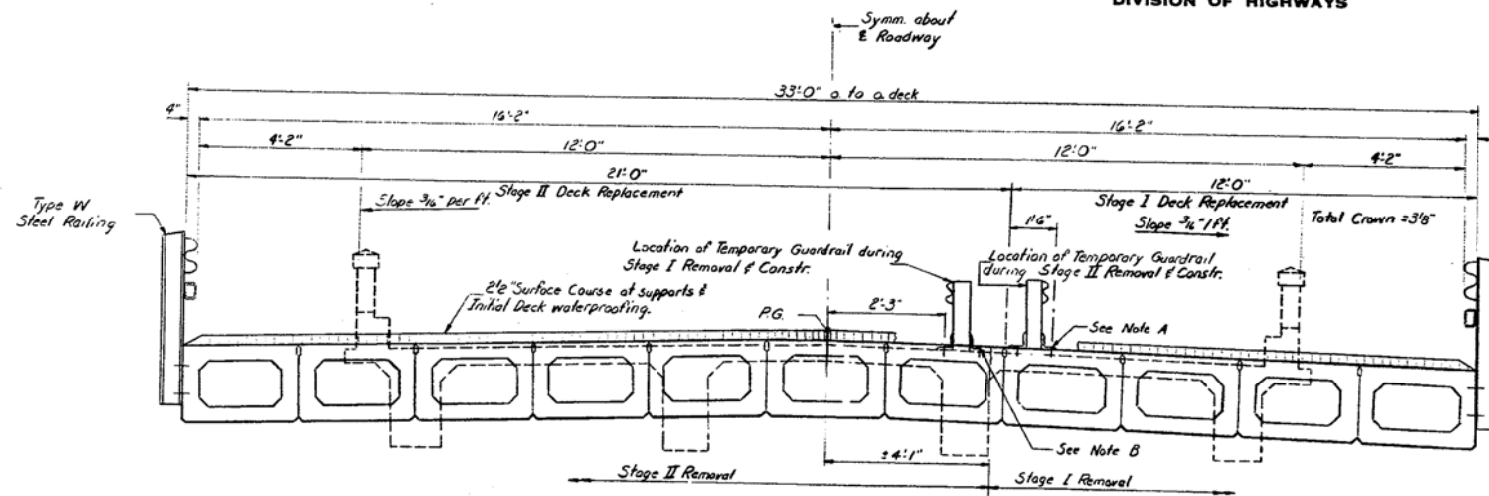
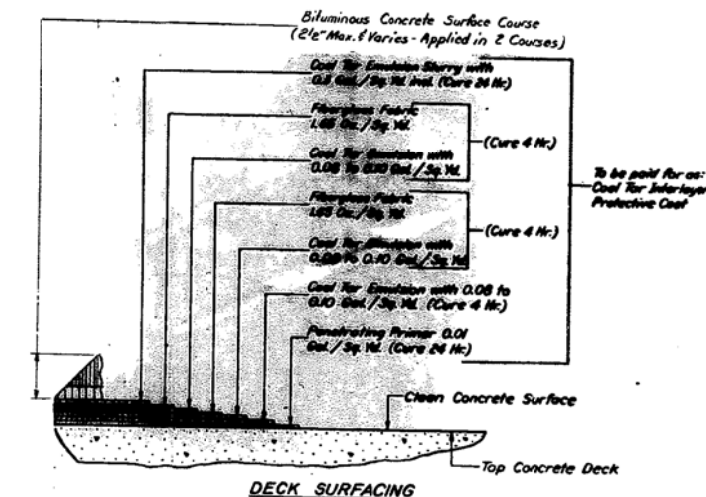


STATE OF ILLINOIS  
DEPARTMENT OF PUBLIC WORKS & BUILDINGS  
DIVISION OF HIGHWAYS

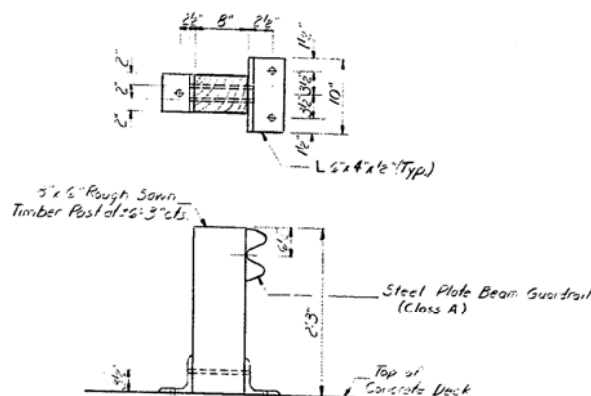
ROUTE NO.	SECTION	COUNTY	TOTAL SHEETS	SHEET NO.	SHEET NO.
40	5BR-1	CARROLL	16	12	6 SHEETS



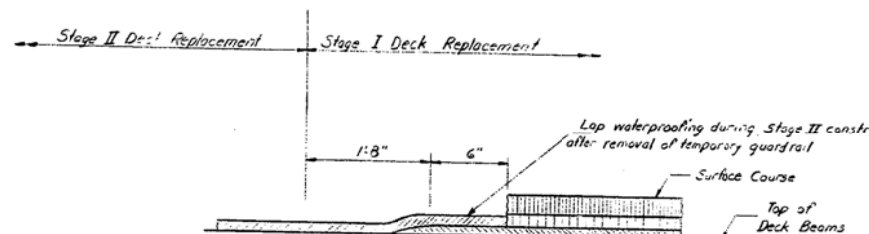
CROSS SECTION  
Looking South



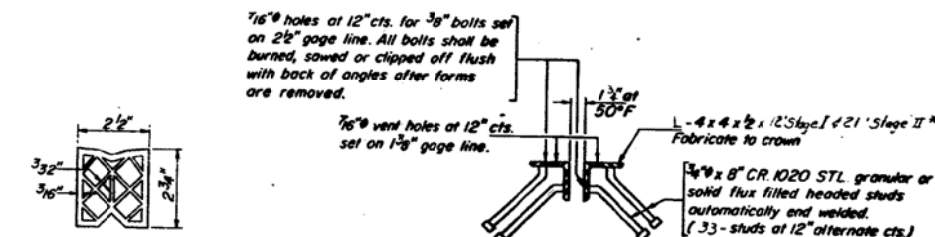
DECK SURFACING



TEMPORARY GUARDRAIL  
See Special Provisions

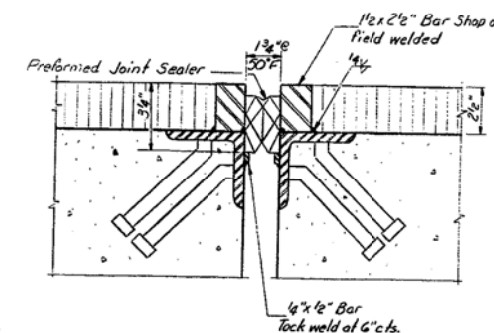


WATERPROOFING TREATMENT



DETAIL "A"

\*The lengths of Exp. angles are to be determined in the field after the deck beams have been erected in place.



SEALED JOINT DETAIL

Note: PJS. to be installed after stage II construction is finished.

Note A: 3/4" Bolts to be cast in deck beams for use during stage II deck removal & construction. Cast incidental to RCC, deck beams. All bolts shall be burned, sawed or clipped off flush with the top of beams after temporary guardrail is removed.

Note B: 3/4" Expansion Bolts for use during stage I deck removal & construction. Cast incidental to temporary guardrail.

DESIGNED	PAZ G. Z	EXAMINED	MAY 5 1971
CHECKED	D. A. RYAN	PASSED	ALF BAUMANN
DRAWN	S.E. LINDSEY	APPROVED	RICHARD H. GOLTZMAN
CHECKED	D. A. RYAN		

SUPERSTRUCTURE  
SBI RT. 40 SEC. 5 BR-1  
CARROLL COUNTY  
STA. 681+74

FILE NAME =	USER NAME = SAW	DESIGNED - RAC	REVISED -
... \0264084-SHT-Ex-Bridge.dgn		DRAWN - SAW	REVISED -
		CHECKED - DAZ	REVISED -
		DATE - 08-08-13	REVISED -

STATE OF ILLINOIS  
DEPARTMENT OF TRANSPORTATION

ZROKA  
engineering

Zroka Engineering, P.C.  
4216 North Hermitage  
Chicago, IL 60613

EXISTING BRIDGE PLANS  
FOR INFORMATION ONLY

SCALE: SHEET 14 OF 28 SHEETS STA. TO STA.

F.A.P. RTE.	SECTION	COUNTY	TOTAL SHEETS	SHEET NO.
646	5 BR-3	CARROLL	84	56
CONTRACT NO. 64DB4			ILLINOIS FED. AID PROJECT	