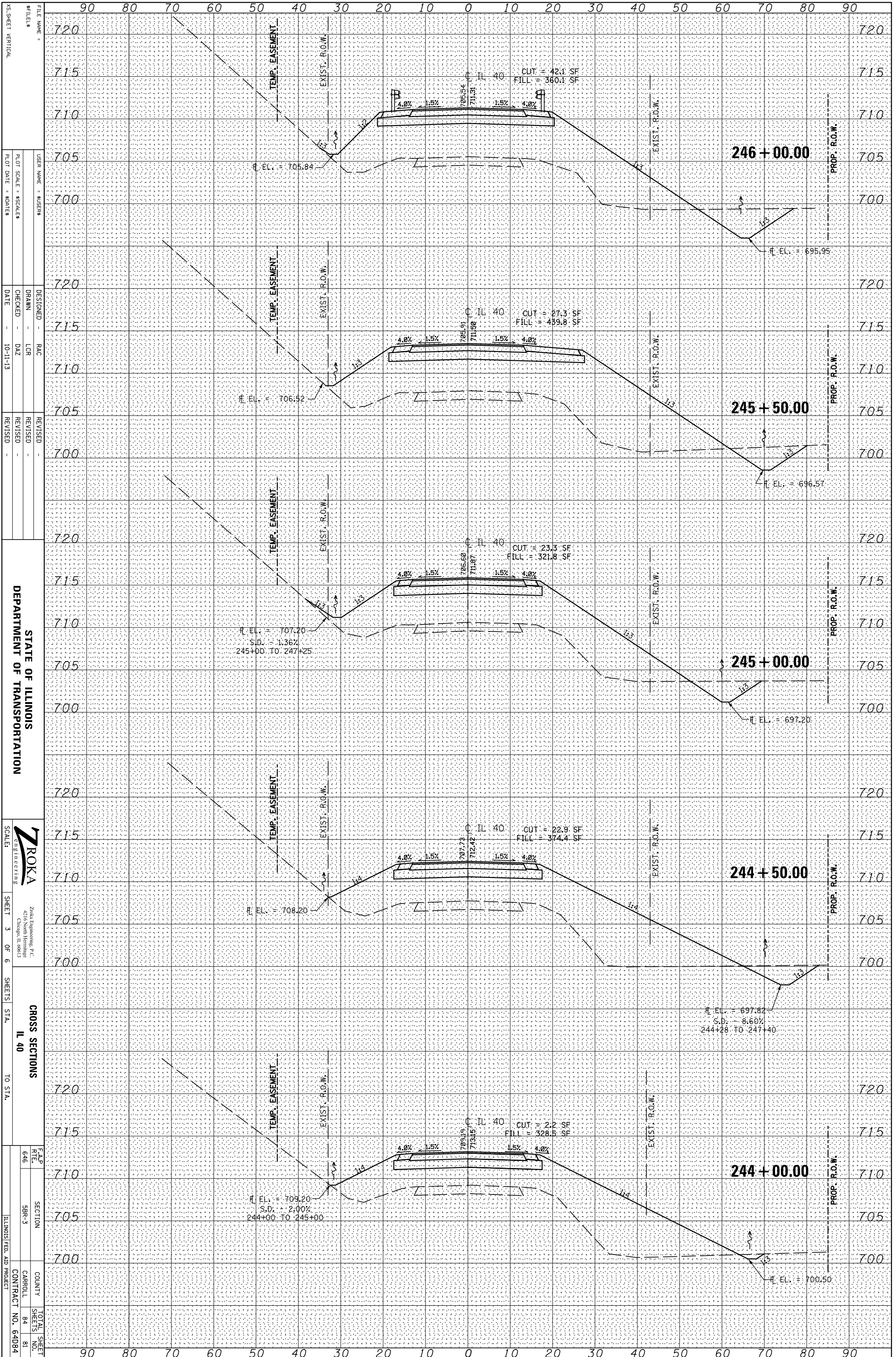


ORIGINAL SURVEY	SURVEYED	BY	DATE
NOTE BOOK	PLOTTED		
	TEMPLATE		
	AREAS		
	CHECKED		

FINAL SURVEY	SURVEYED	BY	DATE
NOTE BOOK	PLOTTED		
	TEMPLATE		
	AREAS		
	CHECKED		



FILE NAME: XS-SHEET VERTICAL  
 USER NAME: \$USERS  
 DESIGNED: RAC  
 DRAWN: LCR  
 CHECKED: DAZ  
 DATE: 10-11-13  
 REVISIONS:  
 REVISION NO. DATE BY DESCRIPTION  
 1 10-11-13 RAC  
 2 10-11-13 RAC  
 3 10-11-13 RAC  
 4 10-11-13 RAC  
 5 10-11-13 RAC  
 6 10-11-13 RAC  
 7 10-11-13 RAC  
 8 10-11-13 RAC  
 9 10-11-13 RAC  
 10 10-11-13 RAC  
 11 10-11-13 RAC  
 12 10-11-13 RAC  
 13 10-11-13 RAC  
 14 10-11-13 RAC  
 15 10-11-13 RAC  
 16 10-11-13 RAC  
 17 10-11-13 RAC  
 18 10-11-13 RAC  
 19 10-11-13 RAC  
 20 10-11-13 RAC  
 21 10-11-13 RAC  
 22 10-11-13 RAC  
 23 10-11-13 RAC  
 24 10-11-13 RAC  
 25 10-11-13 RAC  
 26 10-11-13 RAC  
 27 10-11-13 RAC  
 28 10-11-13 RAC  
 29 10-11-13 RAC  
 30 10-11-13 RAC  
 31 10-11-13 RAC  
 32 10-11-13 RAC  
 33 10-11-13 RAC  
 34 10-11-13 RAC  
 35 10-11-13 RAC  
 36 10-11-13 RAC  
 37 10-11-13 RAC  
 38 10-11-13 RAC  
 39 10-11-13 RAC  
 40 10-11-13 RAC  
 41 10-11-13 RAC  
 42 10-11-13 RAC  
 43 10-11-13 RAC  
 44 10-11-13 RAC  
 45 10-11-13 RAC  
 46 10-11-13 RAC  
 47 10-11-13 RAC  
 48 10-11-13 RAC  
 49 10-11-13 RAC  
 50 10-11-13 RAC  
 51 10-11-13 RAC  
 52 10-11-13 RAC  
 53 10-11-13 RAC  
 54 10-11-13 RAC  
 55 10-11-13 RAC  
 56 10-11-13 RAC  
 57 10-11-13 RAC  
 58 10-11-13 RAC  
 59 10-11-13 RAC  
 60 10-11-13 RAC  
 61 10-11-13 RAC  
 62 10-11-13 RAC  
 63 10-11-13 RAC  
 64 10-11-13 RAC  
 65 10-11-13 RAC  
 66 10-11-13 RAC  
 67 10-11-13 RAC  
 68 10-11-13 RAC  
 69 10-11-13 RAC  
 70 10-11-13 RAC  
 71 10-11-13 RAC  
 72 10-11-13 RAC  
 73 10-11-13 RAC  
 74 10-11-13 RAC  
 75 10-11-13 RAC  
 76 10-11-13 RAC  
 77 10-11-13 RAC  
 78 10-11-13 RAC  
 79 10-11-13 RAC  
 80 10-11-13 RAC  
 81 10-11-13 RAC  
 82 10-11-13 RAC  
 83 10-11-13 RAC  
 84 10-11-13 RAC  
 85 10-11-13 RAC  
 86 10-11-13 RAC  
 87 10-11-13 RAC  
 88 10-11-13 RAC  
 89 10-11-13 RAC  
 90 10-11-13 RAC  
 91 10-11-13 RAC  
 92 10-11-13 RAC  
 93 10-11-13 RAC  
 94 10-11-13 RAC  
 95 10-11-13 RAC  
 96 10-11-13 RAC  
 97 10-11-13 RAC  
 98 10-11-13 RAC  
 99 10-11-13 RAC  
 100 10-11-13 RAC

STATE OF ILLINOIS  
DEPARTMENT OF TRANSPORTATION

ZROKA  
 CONSULTING  
 Zarka Engineering, P.C.  
 401 Chicago, IL 60613

CROSS SECTIONS  
 IL 40  
 TO STA.

F.A.P. RTE. 646  
 SECTION 5BR-3  
 COUNTY CARROLL  
 CONTRACT NO. 64D084  
 TOTAL SHEET NO. 84  
 SHEETS 81

ILLINOIS FED. AID PROJECT