

F.A.I. RTE.	SECTION	COUNTY	TOTAL SHEETS	SHEET NO.
88	D2 BRIDGE REPAIR 2014-1	ROCK ISLAND	10	1
		ILLINOIS	CONTRACT NO. 64J91	

STATE OF ILLINOIS
DEPARTMENT OF TRANSPORTATION
DIVISION OF HIGHWAYS

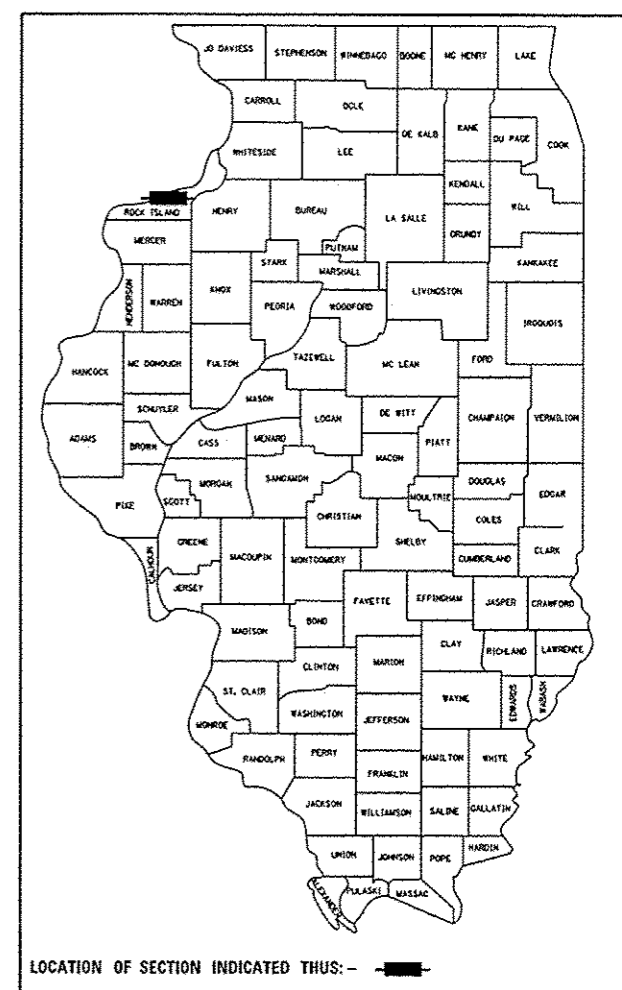
**PROPOSED
HIGHWAY PLANS**

FAI ROUTE 88 (I-88)
SECTION D2 BRIDGE REPAIR 2014-1
TYPE OF IMPROVEMENT: BRIDGE REPAIR
SN 081-0124 OVER I-88
ROCK ISLAND COUNTY

C-92-117-13
R2-E.

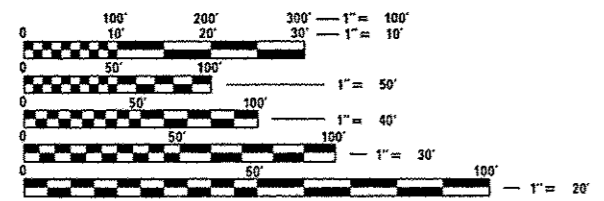
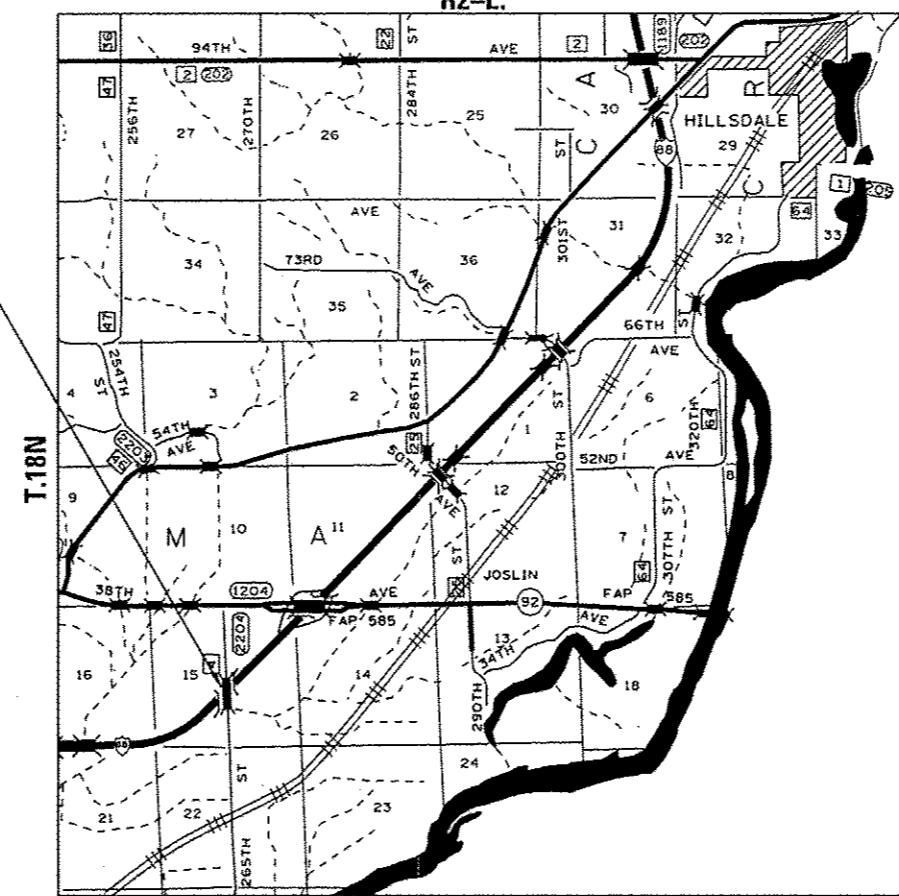
FOR INDEX OF SHEETS, SEE SHEET NO. 2
FOR STATE STANDARDS, SEE SHEET NO. 2

D-92-076-13



ZUMA TOWNSHIP, SECTION: 15

SN 081-0124



FULL SIZE PLANS HAVE BEEN PREPARED USING STANDARD ENGINEERING SCALES. REDUCED SIZED PLANS WILL NOT CONFORM TO STANDARD SCALES. IN MAKING MEASUREMENTS ON REDUCED PLANS, THE ABOVE SCALES MAY BE USED.

J.U.L.I.E.
JOINT UTILITY LOCATION INFORMATION FOR EXCAVATION
1-800-892-0123
OR 811

PROJECT ENGINEER: DAVID DOSS (815) 284-5416
PROJECT MANAGER: MAHMOUD ETEMADI (815) 284-5393

GROSS LENGTH=277.06 FT.=0.052 MILE
NET LENGTH=277.06 FT.=0.052 MILE

CONTRACT NO. 64J91

STATE OF ILLINOIS
DEPARTMENT OF TRANSPORTATION
DIVISION OF HIGHWAYS

SUBMITTED Oct 9 2013
Paul A. Lueten
DEPUTY DIRECTOR OF HIGHWAYS, REGION ENGINEER

Dec 6 2013
John D. Baranzelli, P.E.
ENGINEER OF DESIGN AND ENVIRONMENT

Dec 6 2013
Omer Osman, P.E.
DIRECTOR OF HIGHWAYS, CHIEF ENGINEER

PRINTED BY THE AUTHORITY
OF THE STATE OF ILLINOIS