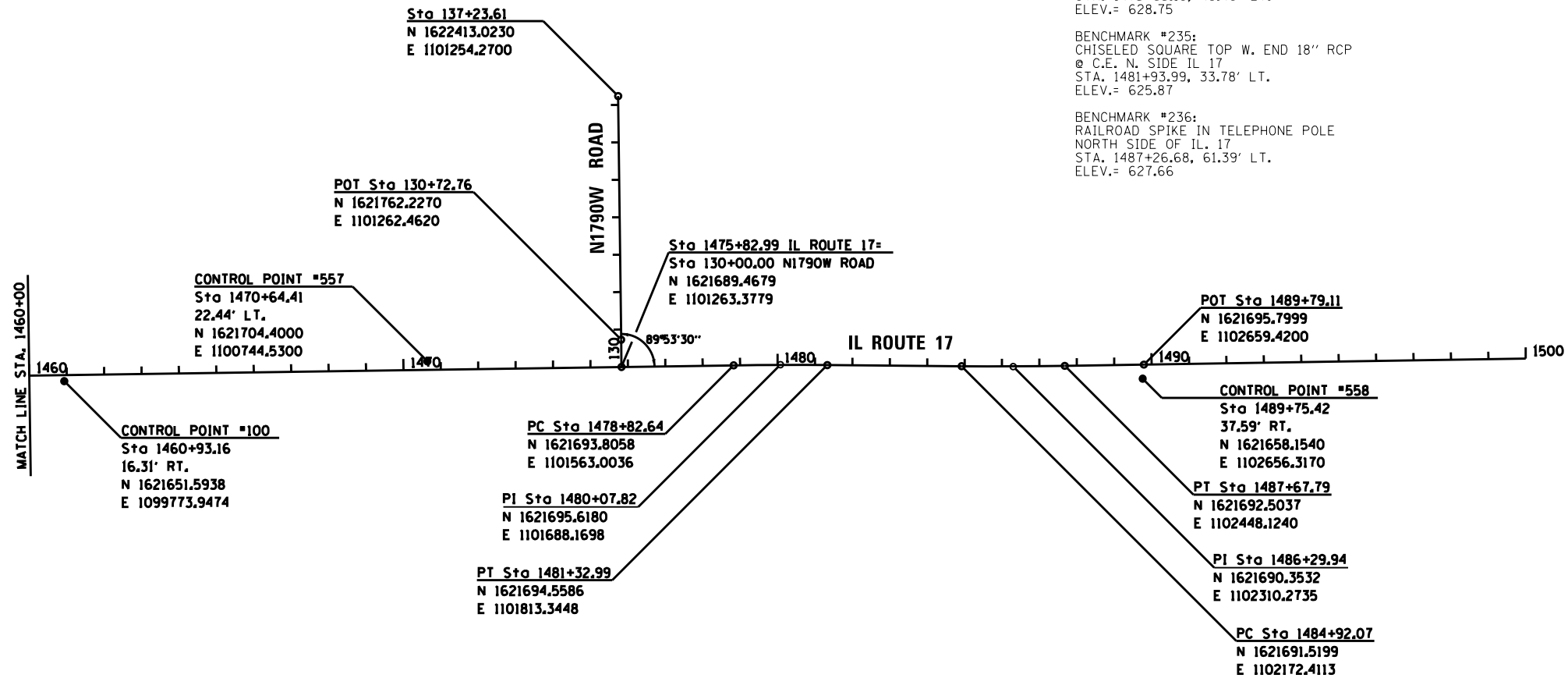


- BENCHMARK #231:
CHIS "X" TOP N. BOLT ON F.H.
S. SIDE @ PANOZZOS NURSERY
STA. 1460+87.40, 48.26' RT.
ELEV.= 631.64
- BENCHMARK #232:
RAILROAD SPIKE IN TELEPHONE POLE
NORTH SIDE OF IL. 17
STA. 1466+40.29, 48.61' LT.
ELEV.= 629.74
- BENCHMARK #233:
RAILROAD SPIKE IN POWER POLE WITH TRANSFORMER
ON THE NORTH SIDE OF IL. 17 @ F.E.
STA. 1470+41.73, 48.24' LT.
ELEV.= 631.90
- BENCHMARK #234:
RAILROAD SPIKE IN POWER POLE WITH LIGHT
NORTH SIDE OF IL. 17 @ C.E. TO R.R. YARD
STA. 1475+65.19, 48.40' LT.
ELEV.= 628.75
- BENCHMARK #235:
CHISELED SQUARE TOP W. END 18" RCP
@ C.E. N. SIDE IL 17
STA. 1481+93.99, 33.78' LT.
ELEV.= 625.87
- BENCHMARK #236:
RAILROAD SPIKE IN TELEPHONE POLE
NORTH SIDE OF IL. 17
STA. 1487+26.68, 61.39' LT.
ELEV.= 627.66



PROP. CURVE 17CL-1
PI STA. = 1480+07.82
Δ = 1° 18' 52" (RT)
D = 0° 31' 30"
R = 10,912.75'
T = 125.18'
L = 250.35'
E = 0.72'
P.C. STA. = 1478+82.64
P.T. STA. = 1481+32.99

PROP. CURVE 17CL-2
PI STA. = 1486+29.94
Δ = 1° 22' 43" (LT)
D = 0° 30' 00"
R = 11,459.09'
T = 137.87'
L = 275.72'
E = 0.83'
P.C. STA. = 1484+92.07
P.T. STA. = 1487+67.79

SEE SHEET 53 & 54 FOR
CONTROL POINT TIES

FILE NAME = D366905-SHT-ALIGNS-1460-1500.DGN	USER NAME = ---	DESIGNED - ---	REVISED - ---	STATE OF ILLINOIS DEPARTMENT OF TRANSPORTATION	IL ROUTE 17 ALIGNMENT, TIES, & BENCHMARKS		F.A.P. RTE. 41	SECTION (1)W&RS-1	COUNTY KANKAKEE	TOTAL SHEETS 450	SHEET NO. 52
	SHT_PLAN	PLOT SCALE = 1"=200'	CHECKED - JKC		REVISED - ---	SCALE: 1"=200'	SHEET ___ OF ___ SHEETS	STA. 1460+00	TO STA. 1500+00	CONTRACT NO. 66905 ILLINOIS FED. AID PROJECT	
	PLOT DATE = 07/13	DATE - 07/13	REVISED - ---								