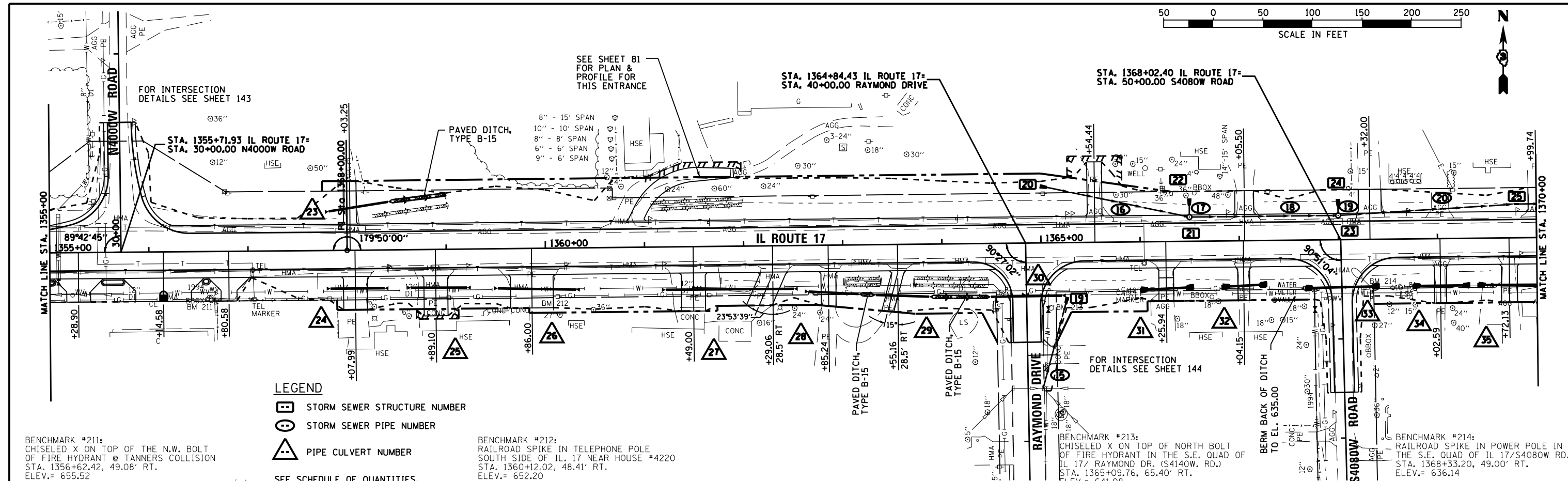
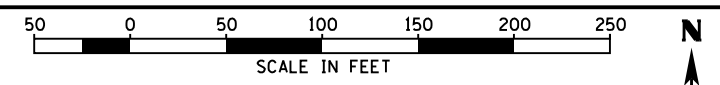


DATE	07/08
BY	CHAMLIN & ASSOCIATES
LAG	JKC
NO.	0366905-SHT-PLNPRF-1355-1370.DGN
DATE	07/08
BY	CHAMLIN & ASSOCIATES
LAG	JKC
NO.	0366905-SHT-PROF-1355-1370.DGN

DATE	07/08
BY	CHAMLIN & ASSOCIATES
LAG	JKC
NO.	0366905-SHT-PROF-1355-1370.DGN
DATE	07/08
BY	CHAMLIN & ASSOCIATES
LAG	JKC
NO.	0366905-SHT-PROF-1355-1370.DGN



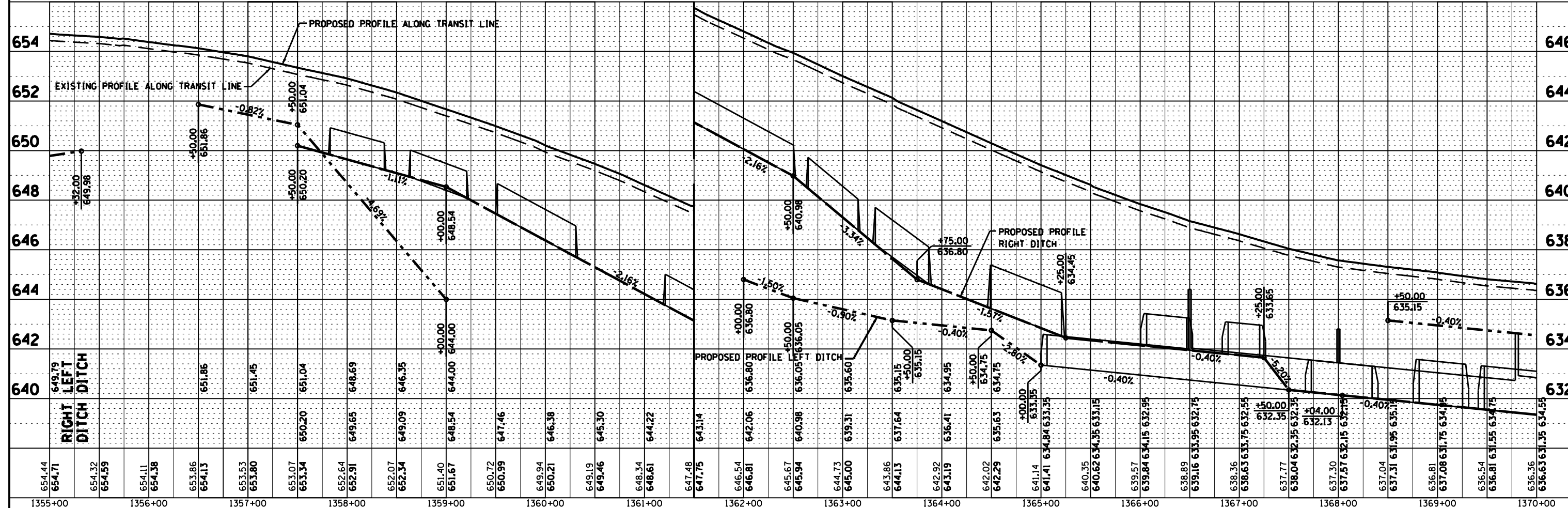
BENCHMARK #211:
CHISELED X ON TOP OF THE N.W. BOLT
OF FIRE HYDRANT @ TANNERS COLLISION
STA. 1356+62.42, 49.08' RT.
ELEV. = 655.52

BENCHMARK #212:
RAILROAD SPIKE IN TELEPHONE POLE
SOUTH SIDE OF IL. 17 NEAR HOUSE #4220
STA. 1360+12.02, 48.41' RT.
ELEV. = 652.20

BENCHMARK #213:
CHISELED X ON TOP OF NORTH BOLT
OF FIRE HYDRANT IN THE S.E. QUAD OF
IL 17/ RAYMOND DR. (S4140W. RD.)
STA. 1365+09.76, 65.40' RT.
ELEV. = 641.08

BENCHMARK #214:
RAILROAD SPIKE IN POWER POLE IN
THE S.E. QUAD OF IL 17/S4080W RD.
STA. 1368+33.20, 49.00' RT.
ELEV. = 636.14

- LEGEND**
- STORM SEWER STRUCTURE NUMBER
 - STORM SEWER PIPE NUMBER
 - PIPE CULVERT NUMBER
- SEE SCHEDULE OF QUANTITIES.



FILE NAME =	USER NAME = --	DESIGNED - JKC	REVISED -	STATE OF ILLINOIS DEPARTMENT OF TRANSPORTATION	PLAN & PROFILE - IL ROUTE 17	F.A.P. RT. =	SECTION	COUNTY	TOTAL SHEETS	SHEET NO.	
D366905-SHT-PLNPRF-1355-1370.DGN		DRAWN - LAG/NV	REVISED -			41	(1)W&S-1	KANKAKEE	450	70	
PLOT SCALE = 1"=50'		CHECKED - JKC	REVISED -			CONTRACT NO. 66905					
PLOT DATE = 07/13		DATE - 07/13	REVISED -			ILLINOIS FED. AID PROJECT					