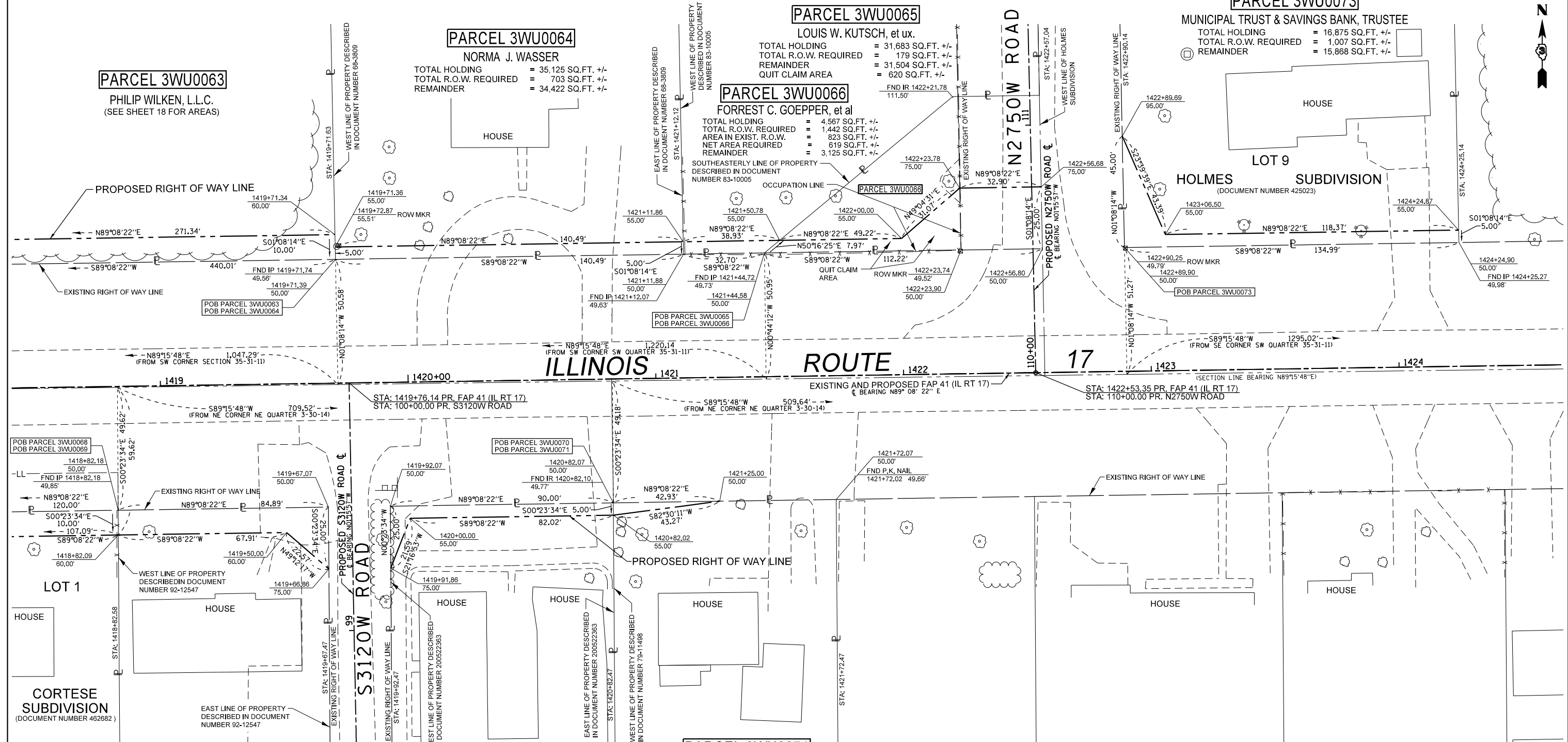


SOUTHWEST 1/4 OF SEC. 35, T. 31 N., R. 11 E., 3RD P.M.



NORTHEAST 1/4 OF SEC. 3, T. 30 N., R. 14 W., 2ND P.M.

**PARCEL 3WU0063**  
PHILIP WILKEN, L.L.C.  
(SEE SHEET 18 FOR AREAS)

**PARCEL 3WU0064**  
NORMA J. WASSER  
TOTAL HOLDING = 35,125 SQ.FT. +/-  
TOTAL R.O.W. REQUIRED = 703 SQ.FT. +/-  
REMAINDER = 34,422 SQ.FT. +/-

**PARCEL 3WU0065**  
LOUIS W. KUTSCH, et ux.  
TOTAL HOLDING = 31,683 SQ.FT. +/-  
TOTAL R.O.W. REQUIRED = 179 SQ.FT. +/-  
REMAINDER = 31,504 SQ.FT. +/-  
QUIT CLAIM AREA = 620 SQ.FT. +/-

**PARCEL 3WU0066**  
FORREST C. GOEPPER, et al  
TOTAL HOLDING = 4,567 SQ.FT. +/-  
TOTAL R.O.W. REQUIRED = 1,442 SQ.FT. +/-  
AREA IN EXIST. R.O.W. = 623 SQ.FT. +/-  
NET AREA REQUIRED = 619 SQ.FT. +/-  
REMAINDER = 3,125 SQ.FT. +/-

**PARCEL 3WU0068**  
DAVID WILLIAMS, et al.  
(SEE SHEET 18 FOR AREAS)

**PARCEL 3WU0069**  
RONALD C. HANSEN  
TOTAL HOLDING = 12,750 SQ.FT. +/-  
TOTAL R.O.W. REQUIRED = 976 SQ.FT. +/-  
REMAINDER = 11,774 SQ.FT. +/-

**PARCEL 3WU0070**  
MUNICIPAL TRUST & SAVINGS BANK - TRUSTEE  
TOTAL HOLDING = 13,500 SQ.FT. +/-  
TOTAL R.O.W. REQUIRED = 530 SQ.FT. +/-  
REMAINDER = 12,970 SQ.FT. +/-

**PARCEL 3WU0071**  
JOEL P. GEREAX, et ux.  
TOTAL HOLDING = 13,500 SQ.FT. +/-  
TOTAL R.O.W. REQUIRED = 107 SQ.FT. +/-  
REMAINDER = 13,393 SQ.FT. +/-

**PARCEL 3WU0073**  
MUNICIPAL TRUST & SAVINGS BANK, TRUSTEE  
TOTAL HOLDING = 16,875 SQ.FT. +/-  
TOTAL R.O.W. REQUIRED = 1,007 SQ.FT. +/-  
REMAINDER = 15,868 SQ.FT. +/-

**SURVEYOR'S STATEMENT**  
I, PETER V. BURBULYS, HEREBY CERTIFY THAT I AM A PROFESSIONAL LAND SURVEYOR OF THE STATE OF ILLINOIS. THAT THE SURVEY OF F.A.P. 41 (IL RT 17) WAS MADE BY ME OR UNDER MY DIRECTION, AND THAT THE SURVEY IS TRUE AND COMPLETE AS SHOWN TO THE BEST OF MY KNOWLEDGE AND BELIEF. THAT ALL MONUMENTS AND MARKS ARE OF THE CHARACTER AND OCCUPY THE POSITION SHOWN THEREON, AND ARE SUFFICIENT TO ENABLE THE SURVEY TO BE RETRACED. THIS PROFESSIONAL SERVICE CONFORMS TO THE CURRENT ILLINOIS MINIMUM STANDARDS FOR A BOUNDARY SURVEY.

DATED: OCTOBER 2ND, 2013  
BY: PETER V. BURBULYS, ILLINOIS PROFESSIONAL LAND SURVEYOR NO. 35-3613 (EXPIRES NOV. 2014)



NOTE: BEARINGS AND DISTANCES ARE BASED UPON THE ILLINOIS STATE PLANE COORDINATE SYSTEM, (GRID) EAST ZONE, (NAD-83, 2007 ADJ.).

ALL AREAS ARE BASED ON GROUND MEASUREMENTS  
COMBINED FACTOR = 0.9999637  
TOTAL HOLDING AREA TAKEN FROM TAX ASSESSOR (NOT SURVEYED)

FILE NAME	USER NAME = burbulyspv	DESIGNED -	REVISED 2/7/13 STATION OFFSET MISLABEL
et:\pw\work\p\dtdot\burbulyspv\d0112119\036905-Sheet19.dgn		DRAWN -	REVISED 2/25/13 ADD QUIT CLAIM PAR. 65
PLOT SCALE = 40.0000' / in.		CHECKED -	REVISED 3/7/13 PAR. 64 NAME CHANGE
PLOT DATE = 10/2/2013		DATE -	REVISED -

STATE OF ILLINOIS  
DEPARTMENT OF TRANSPORTATION

RIGHT OF WAY PLANS	
PROJECT	JOB NO. R-93-006-11
SCALE: 1" = 20'	SHEET 19 OF 30 SHEETS
STA. 1418+50.00 TO STA. 1424+50.00	

F.A.P. RTE.	SECTION	COUNTY	TOTAL SHEETS	SHEET NO.
41	(11)W&RS-1	KANKAKEE	450	130
CONTRACT NO. 66905				
FED. ROAD DIST. NO. ILLINOIS FED. AID PROJECT				