

SOUTHEAST 1/4 OF SEC. 35, T. 31 N., R. 11 E., 3RD P.M.



**PARCEL 3WU0075**

KENNETH E. SHOUP  
(SEE SHEET 22 FOR AREAS)

**PARCEL 3WU0087**

KEVIN HASTINGS  
TOTAL HOLDING = 53,889 SQ.FT. +/-  
TOTAL R.O.W. REQUIRED = 1,066 SQ.FT. +/-  
REMAINDER = 52,823 SQ.FT. +/-

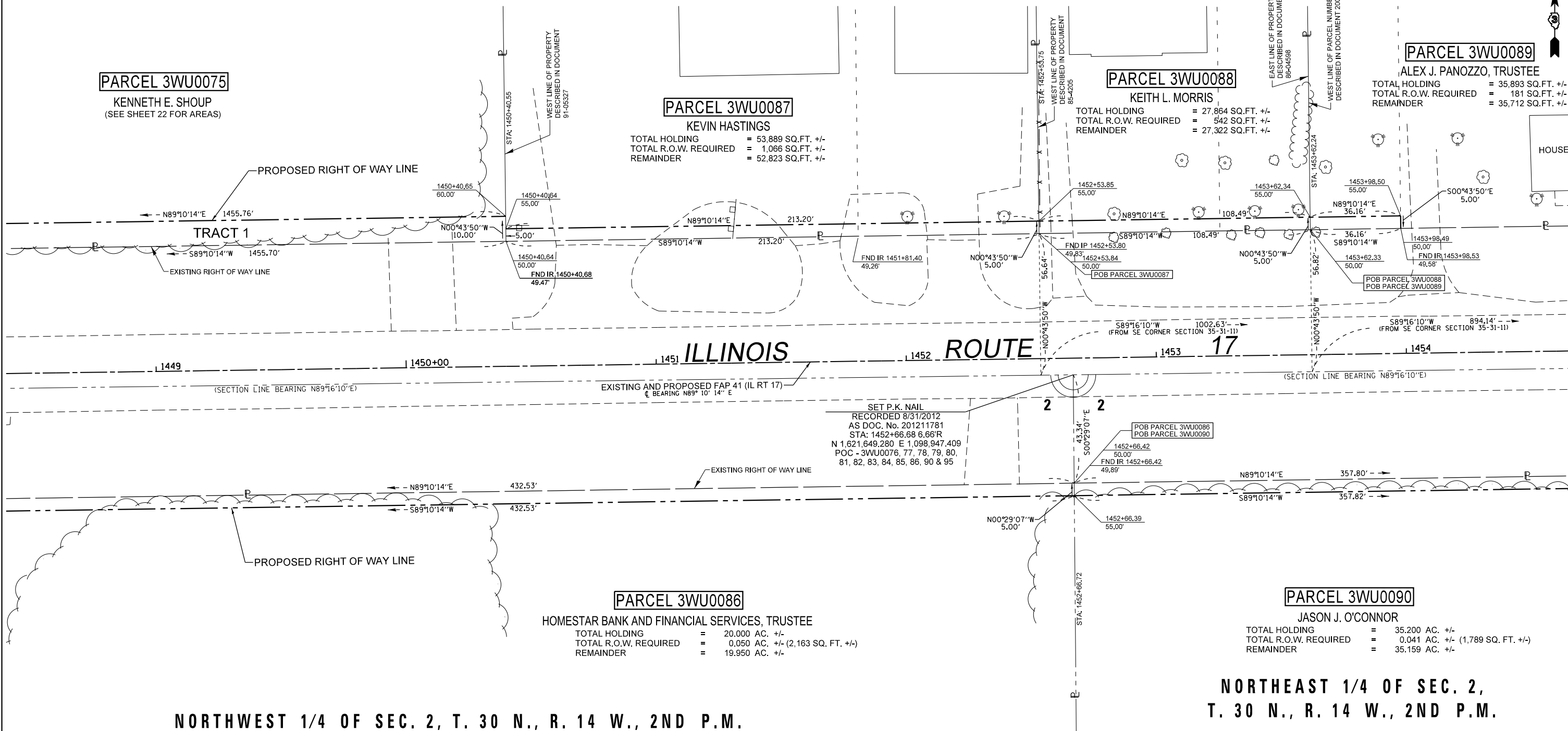
**PARCEL 3WU0088**

KEITH L. MORRIS  
TOTAL HOLDING = 27,864 SQ.FT. +/-  
TOTAL R.O.W. REQUIRED = 542 SQ.FT. +/-  
REMAINDER = 27,322 SQ.FT. +/-

**PARCEL 3WU0089**

ALEX J. PANOZZO, TRUSTEE  
TOTAL HOLDING = 35,893 SQ.FT. +/-  
TOTAL R.O.W. REQUIRED = 181 SQ.FT. +/-  
REMAINDER = 35,712 SQ.FT. +/-

HOUSE



ILLINOIS ROUTE 17

SET P.K. NAIL  
RECORDED 8/31/2012  
AS DOC. No. 201211781  
STA: 1452+66.68 6.66'R  
N 1,021,649.280 E 1,098,947.409  
POC - 3WU0076, 77, 78, 79, 80,  
81, 82, 83, 84, 85, 86, 90 & 95

**PARCEL 3WU0086**

HOMESTAR BANK AND FINANCIAL SERVICES, TRUSTEE  
TOTAL HOLDING = 20.000 AC. +/-  
TOTAL R.O.W. REQUIRED = 0.050 AC. +/- (2,163 SQ. FT. +/-)  
REMAINDER = 19.950 AC. +/-

**PARCEL 3WU0090**

JASON J. O'CONNOR  
TOTAL HOLDING = 35.200 AC. +/-  
TOTAL R.O.W. REQUIRED = 0.041 AC. +/- (1,789 SQ. FT. +/-)  
REMAINDER = 35.159 AC. +/-

NORTHWEST 1/4 OF SEC. 2, T. 30 N., R. 14 W., 2ND P.M.

NORTHEAST 1/4 OF SEC. 2,  
T. 30 N., R. 14 W., 2ND P.M.

SURVEYOR'S STATEMENT

I, PETER V. BURBULYS, HEREBY CERTIFY THAT I AM A PROFESSIONAL LAND SURVEYOR OF THE STATE OF ILLINOIS. THAT THE SURVEY OF F.A.P. 41 (IL 17) WAS MADE BY ME OR UNDER MY DIRECTION, AND THAT THE SURVEY IS TRUE AND COMPLETE AS SHOWN TO THE BEST OF MY KNOWLEDGE AND BELIEF. THAT ALL MONUMENTS AND MARKS ARE OF THE CHARACTER AND OCCUPY THE POSITION SHOWN THEREON, AND ARE SUFFICIENT TO ENABLE THE SURVEY TO BE RETRACED. THIS PROFESSIONAL SERVICE CONFORMS TO THE CURRENT ILLINOIS MINIMUM STANDARDS FOR A BOUNDARY SURVEY.



NOTE: BEARINGS AND DISTANCES ARE BASED UPON THE ILLINOIS STATE PLANE COORDINATE SYSTEM, (GRID) EAST ZONE, (NAD-83, 2007 ADJ.).

DATED OCTOBER 2ND, 2013  
BY PETER V. BURBULYS, ILLINOIS PROFESSIONAL LAND SURVEYOR NO. 35-3613 (EXPIRES NOV. 2014)



ALL AREAS ARE BASED ON GROUND MEASUREMENTS  
COMBINED FACTOR = 0.9999637  
TOTAL HOLDING AREA TAKEN FROM TAX ASSESSOR (NOT SURVEYED)

FILE NAME	USER NAME = burbulyspv	DESIGNED -	REVISED -
et:\pw\work\p\d\dot\burbulyspv\d0112119\0365905-Sheet24.dgn		DRAWN -	REVISED -
PLOT SCALE = 40.0000' / in.		CHECKED -	REVISED -
PLOT DATE = 10/2/2013		DATE -	REVISED -

STATE OF ILLINOIS  
DEPARTMENT OF TRANSPORTATION

RIGHT OF WAY PLANS

PROJECT	JOB NO. R-93-006-11
SCALE: 1" = 20'	SHEET 24 OF 30 SHEETS
STA. 1448+50.00 TO STA. 1454+50.00	

F.A.P. RTE.	SECTION	COUNTY	TOTAL SHEETS	SHEET NO.
41	(11)W&RS-1	KANKAKEE	450	135
CONTRACT NO. 66905				
FED. ROAD DIST. NO. ILLINOIS FED. AID PROJECT				