

STATE OF ILLINOIS
DEPARTMENT OF TRANSPORTATION
DIVISION OF HIGHWAYS

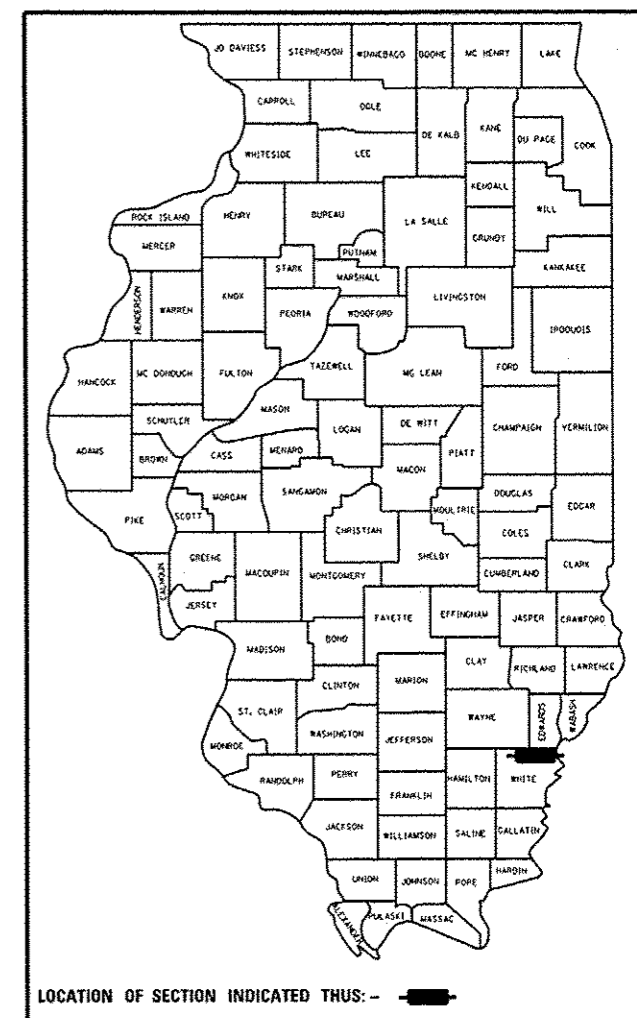
**PROPOSED
HIGHWAY PLANS**

FAI ROUTE 64 (I-64)
SECTION (97-2-1)RS-1; BSMART 2012-1,2,3
WHITE COUNTY
PROJ. NO. ACF-ACNHPP-0064 (402)
RESURFACING & STRUCTURE REPAIR
C-99-008-12

F.A.I. RTE.	SECTION	COUNTY	TOTAL SHEETS	SHEET NO.
64	*	WHITE	54	1
		ILLINOIS	CONTRACT NO. 78282	

*197-2-1)RS-1; BSMART 2012-1,2,3

D-99-007-12

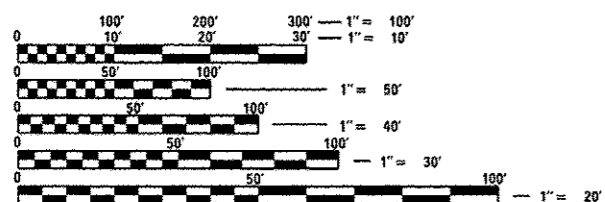


LOCATION OF SECTION INDICATED THUS: - [black rectangle]

FOR INDEX OF SHEETS, SEE SHEET NO. 3

ADT 10,608 (2011)
PV = 6987
MU = 2958
SU = 663
TRUCK % = 34%

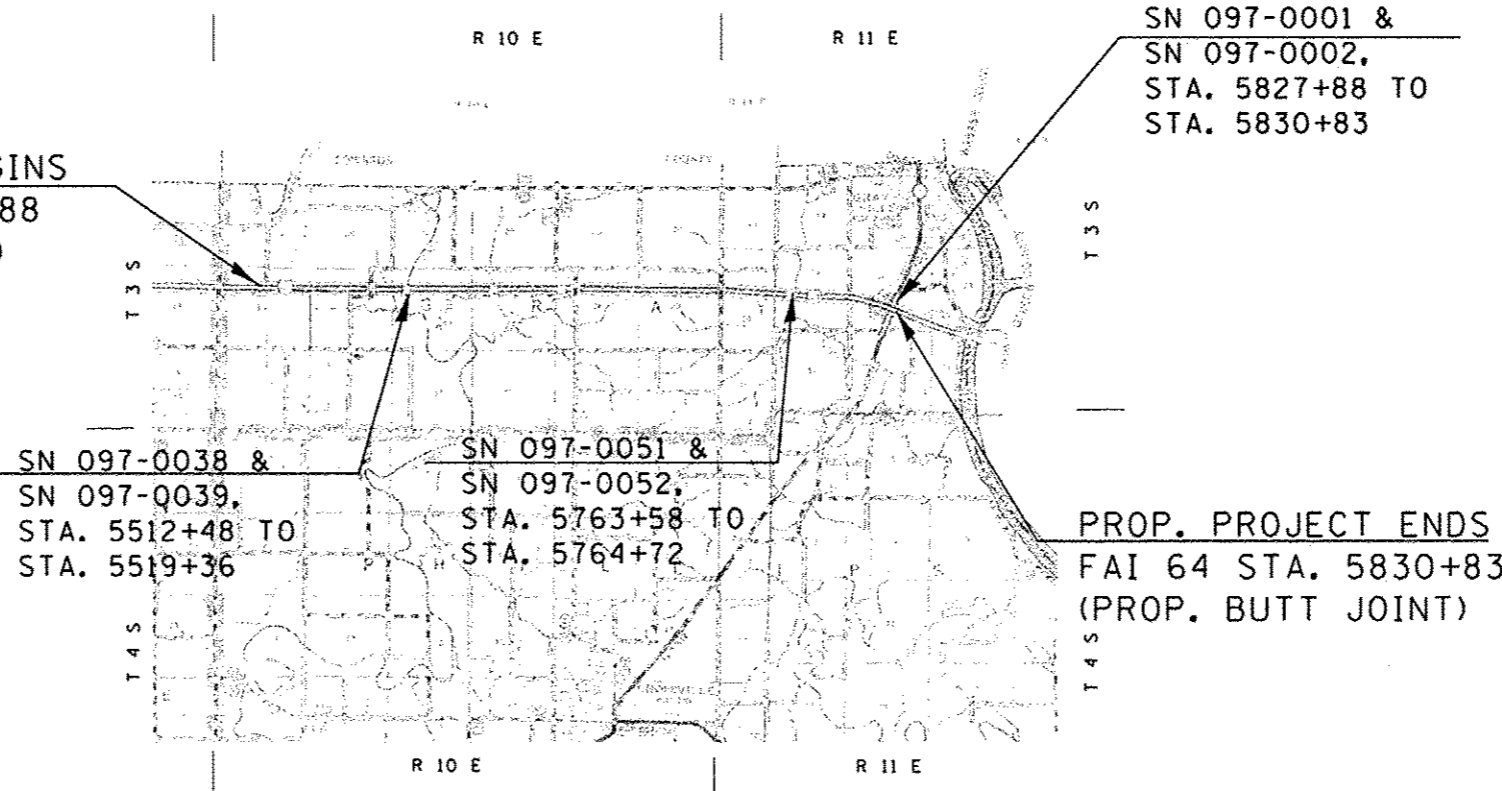
TOWNSHIPS: GRAY



FULL SIZE PLANS HAVE BEEN PREPARED USING STANDARD ENGINEERING SCALES. REDUCED SIZED PLANS WILL NOT CONFORM TO STANDARD SCALES. IN MAKING MEASUREMENTS ON REDUCED PLANS, THE ABOVE SCALES MAY BE USED.

J.U.L.I.E.
JOINT UTILITY LOCATION INFORMATION FOR EXCAVATION
1-800-892-0123
OR 811

PROP. PROJECT BEGINS
FAI 64 STA. 5455+88
(PROP. BUTT JOINT)



SN 097-0001 &
SN 097-0002.
STA. 5827+88 TO
STA. 5830+83

PROP. PROJECT ENDS
FAI 64 STA. 5830+83
(PROP. BUTT JOINT)

GROSS LENGTH = 37,495' = 7.10 MILES
NET LENGTH = 37,495' = 7.10 MILES

PROJECT ENGINEER CHARLES STEIN - (618)351-5210
PROJECT DESIGNER KATHI MCCORD (RDWY) - (618)351-5319
PROJECT DESIGNER WAYNE HALSTEAD (STRUCTURES) - (618)351-5228
CONTRACT NO. 78282

STATE OF ILLINOIS
DEPARTMENT OF TRANSPORTATION
DIVISION OF HIGHWAYS

SUBMITTED *October 16, 2013*

John D. Baranzelli, P.E.
DEPUTY DIRECTOR OF HIGHWAYS, REGION ENGINEER

John D. Baranzelli, P.E.
ENGINEER OF DESIGN AND ENVIRONMENT

Dec 6, 2013

Omer Osman, P.E.
DIRECTOR OF HIGHWAYS, CHIEF ENGINEER

PRINTED BY THE AUTHORITY
OF THE STATE OF ILLINOIS