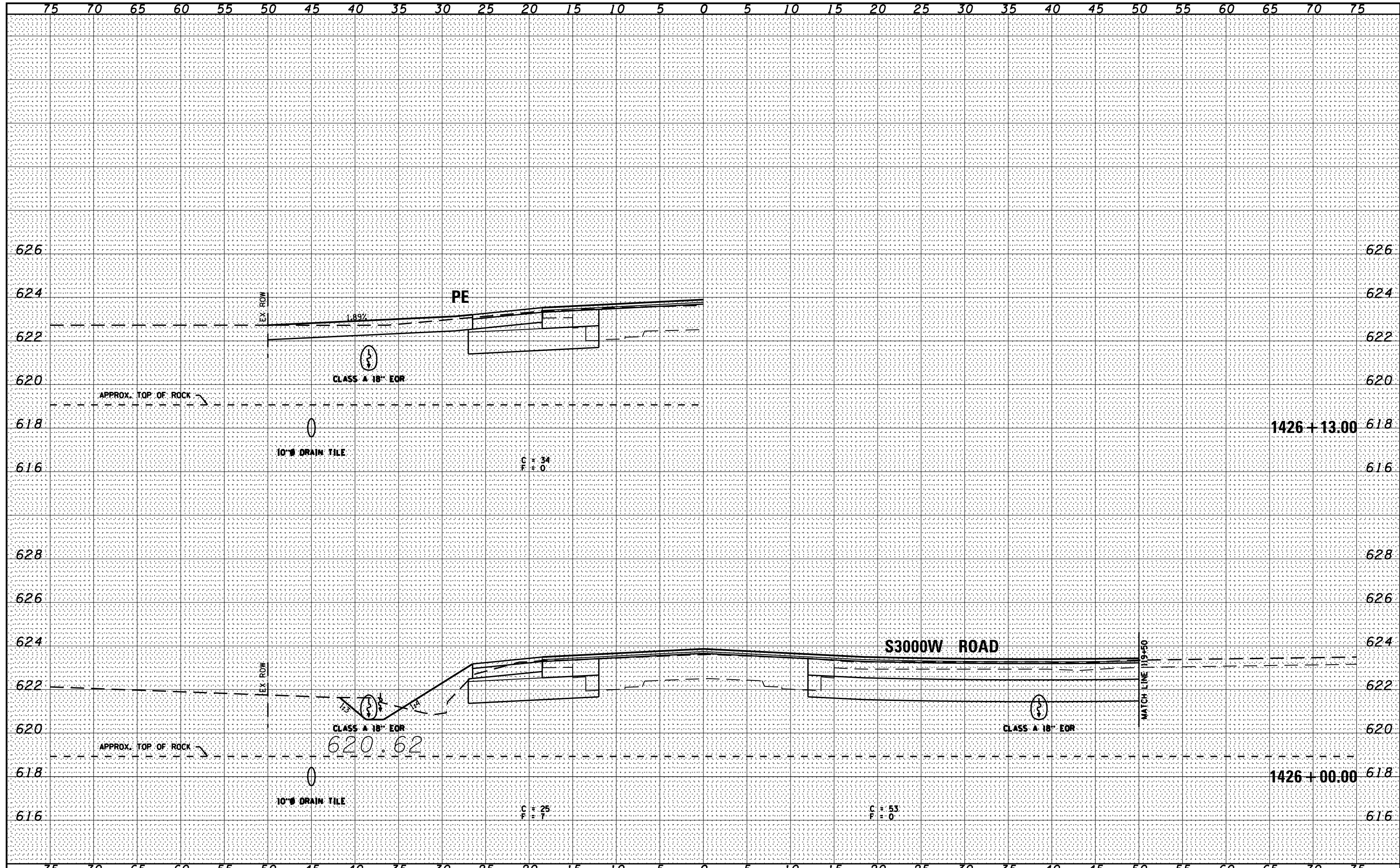


BY	DATE
CHAMLIN & ASSOCIATES	07/09
LAG	07/09
JAC	07/09
---	07/09
---	07/09
---	07/09
---	07/09
---	07/09
---	07/09

BY	DATE
CHAMLIN & ASSOCIATES	07/09
LAG	07/09
JAC	07/09
---	07/09
---	07/09
---	07/09
---	07/09
---	07/09
---	07/09



FILE NAME = D366905-SHT-KSSHT-IL17.DGN	USER NAME = ...	DESIGNED -	REVISD -	<b>STATE OF ILLINOIS</b> <b>DEPARTMENT OF TRANSPORTATION</b>	CROSS SECTIONS - IL 17		F.A.P. RTE. 41	SECTION (I)W&RS-1	COUNTY KANKAKEE	TOTAL SHEETS 450	SHEET NO. 345	
PLOT SCALE = 1"=5'		DRAWN - LAG	REVISD -		SCALE: 1"=5'	SHEET	OF	SHEETS	STA. 1426+00.00	TO STA. 1426+13.00	CONTRACT NO. 66905	ILLINOIS FED. AID PROJECT
PLOT DATE = 07/13		CHECKED - JAC	REVISD -									
		DATE - 07/13	REVISD -									