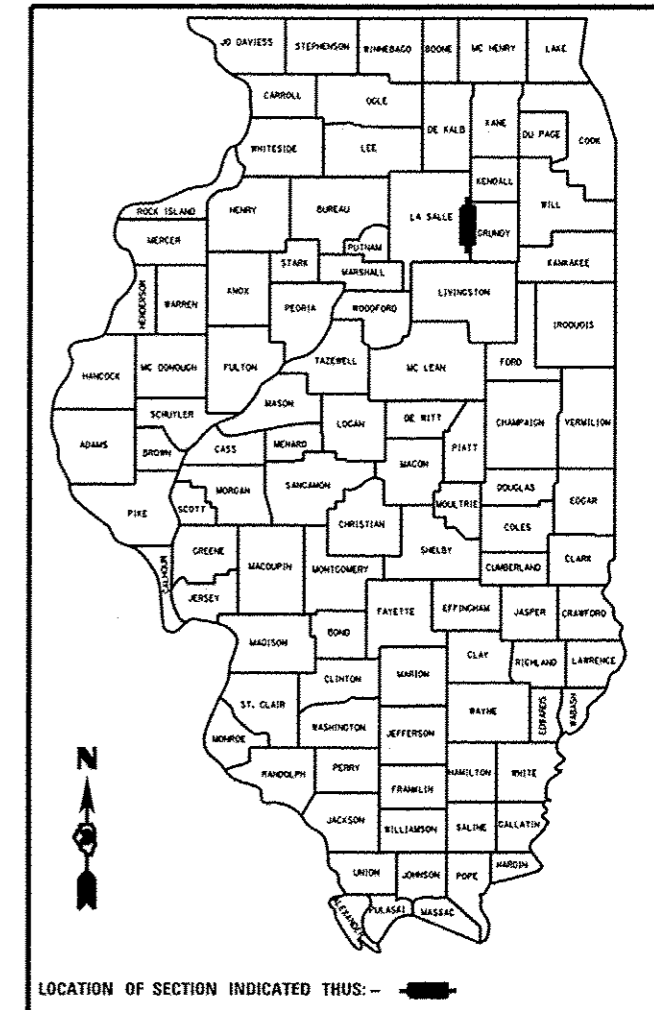


F.A.P. RTE.	SECTION	COUNTY	TOTAL SHEETS	SHEET NO.
786	110)BR-1,2,3	LASALLE	69	1
		ILLINOIS	CONTRACT NO. 66B19	

P-93-030-11  
D-93-021-13



**FUNCTIONAL CLASSIFICATION:**  
RURAL MINOR ARTERIAL  
2012 ADT = 1880  
P.V. 65% S.U. 24% M.U. 11%

STATE OF ILLINOIS  
DEPARTMENT OF TRANSPORTATION  
DIVISION OF HIGHWAYS

SUBMITTED Aug. 6<sup>th</sup> 2013  
Paul G. [Signature]  
DEPUTY DIRECTOR OF HIGHWAYS, REGION ENGINEER

Dec 6 2013  
John D. Baranzelli, P.E.  
ENGINEER OF DESIGN AND ENVIRONMENT

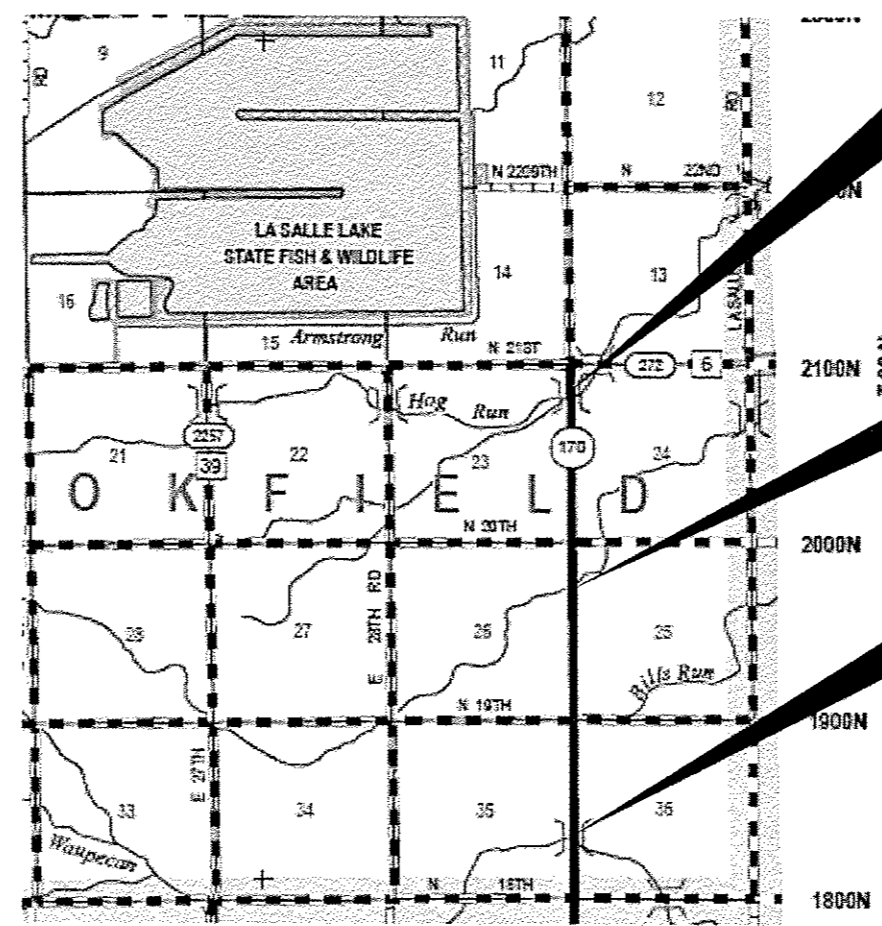
Dec 6 2013  
Omer Osman, P.E.  
DIRECTOR OF HIGHWAYS, CHIEF ENGINEER

**PRINTED BY THE AUTHORITY  
OF THE STATE OF ILLINOIS**

STATE OF ILLINOIS  
DEPARTMENT OF TRANSPORTATION  
DIVISION OF HIGHWAYS  
**PROPOSED  
HIGHWAY PLANS**

FAP ROUTE 786 (IL 170)  
SECTION (110)BR-1,2,3  
PROJECT: ACF-0786(012)  
**REMOVE 3 BRIDGES AND REPLACE  
WITH 3 BOX CULVERTS**  
LASALLE COUNTY

C-93-020-13



EXIST SN 050-0143  
PROP SN 050-2055

EXIST SN 050-0156  
PROP SN 050-2056

EXIST SN 050-0072  
PROP SN 050-2057

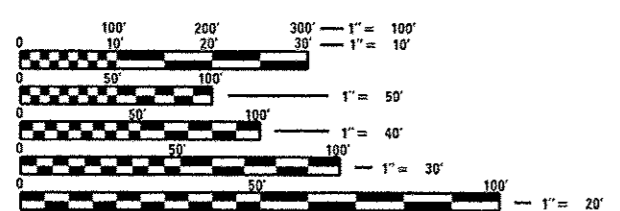
GROSS LENGTH = 13,850 FT. = 2.62 MILE  
NET LENGTH = 1,925 FT. = 0.36 MILE

**INDEX**

- 1 COVER SHEET
- 2 GENERAL NOTES & LOCATION
- 3-7 SUMMARY OF QUANTITIES
- 8-9 TYPICAL SECTIONS
- 10-13 SCHEDULES
- 14-17 TIE POINTS
- 18 PLAN AND PROFILE SHEETS SN 050-0143 (EX.) & SN 050-2055 (PROP)
- 19 PLAN AND PROFILE SHEETS SN 050-0156 (EX.) & SN 050-2056 (PROP)
- 20-22 PLAN AND PROFILE SHEETS SN 050-0072 (EX.) & SN 050-2057 (PROP)
- 23-25 RIGHT-OF-WAY SHEETS
- 26-27 TRAFFIC CONTROL AND PROTECTION (SPECIAL) **REPLACEMENT**
- 28-33 STRUCTURE **REPAIR** PLANS SN 050-0143 (EX.) & SN 050-2055 (PROP)
- 34-40 STRUCTURE **REPAIR** PLANS SN 050-0156 (EX.) & SN 050-2056 (PROP)
- 41-46 STRUCTURE **REPAIR** PLANS SN 050-0072 (EX.) & SN 050-2057 (PROP)
- 47-53 EXISTING BRIDGE PLANS-FOR INFORMATION ONLY
- 54-57 DETAILS
- 58-61 CROSS SECTIONS SHEETS SN 050-0143 (EX.) & SN 050-2055 (PROP)
- 62-65 CROSS SECTIONS SHEETS SN 050-0156 (EX.) & SN 050-2056 (PROP)
- 66-69 CROSS SECTIONS SHEETS SN 050-0072 (EX.) & SN 050-2057 (PROP)

**LIST OF ILLINOIS DOT HIGHWAY STANDARDS**

- 000001-06 STANDARD SYMBOLS, ABBREVIATIONS AND PATTERNS
- 001001-02 AREAS OF REINFORCEMENT BARS
- 001006 DECIMAL OF AN INCH AND OF A FOOT
- 202001-01 EARTH MEDIAN DITCH CHECK
- 280001-07 TEMPORARY EROSION CONTROL SYSTEMS
- 515001-03 NAME PLATE FOR BRIDGES
- 630001-10 STEEL PLATE BEAM GUARDRAIL
- 630101-09 GUARDRAIL MOUNTED ON EXISTING CULVERTS
- 630201-06 PCC/HMA STABILIZATION AT STEEL PLATE BEAM GUARDRAIL
- 630301-06 SHOULDER WIDENING FOR TYPE 1 (SPECIAL) GUARDRAIL TERMINALS
- 635006-03 REFLECTOR AND TERMINAL MARKER PLACEMENT
- 635011-02 REFLECTOR MARKER AND MOUNTING DETAILS
- 666001-01 RIGHT-OF-WAY MARKERS
- 701001-02 OFF-ROAD OPERATIONS 2L, 2W, MORE THAN 15' (4.5 m) AWAY
- 701006-05 OFF-ROAD OPERATIONS 2L, 2W, 15' (4.5 m) TO 24' (600 mm) FROM PAVEMENT EDGE
- 701201-04 LANE CLOSURE, 2L, 2W, DAY ONLY, FOR SPEEDS ≥ 45 MPH
- 701301-04 LANE CLOSURE, 2L, 2W, SHORT TIME OPERATIONS
- 701306-03 LANE CLOSURE, 2L, 2W, SLOW MOVING OPERATIONS DAY ONLY, FOR SPEEDS ≥ 45 MPH
- 701311-03 LANE CLOSURE, 2L, 2W, MOVING OPERATIONS - DAY ONLY
- 701901-03 TRAFFIC CONTROL DEVICES
- 780001-04 TYPICAL PAVEMENT MARKINGS
- 781001-03 TYPICAL APPLICATIONS RAISED REFLECTIVE PAVEMENT MARKERS



FULL SIZE PLANS HAVE BEEN PREPARED USING STANDARD ENGINEERING SCALES. REDUCED SIZED PLANS WILL NOT CONFORM TO STANDARD SCALES. IN MAKING MEASUREMENTS ON REDUCED PLANS, THE ABOVE SCALES MAY BE USED.

J.U.L.I.E.  
JOINT UTILITY LOCATION INFORMATION FOR EXCAVATION  
1-800-892-0123  
OR 811

PROJECT ENGINEER: CRAIG REED, P.E.  
PROJECT MANAGER: PAT BRABOY, P.E.

CONTRACT NO. 66B19

Rev-