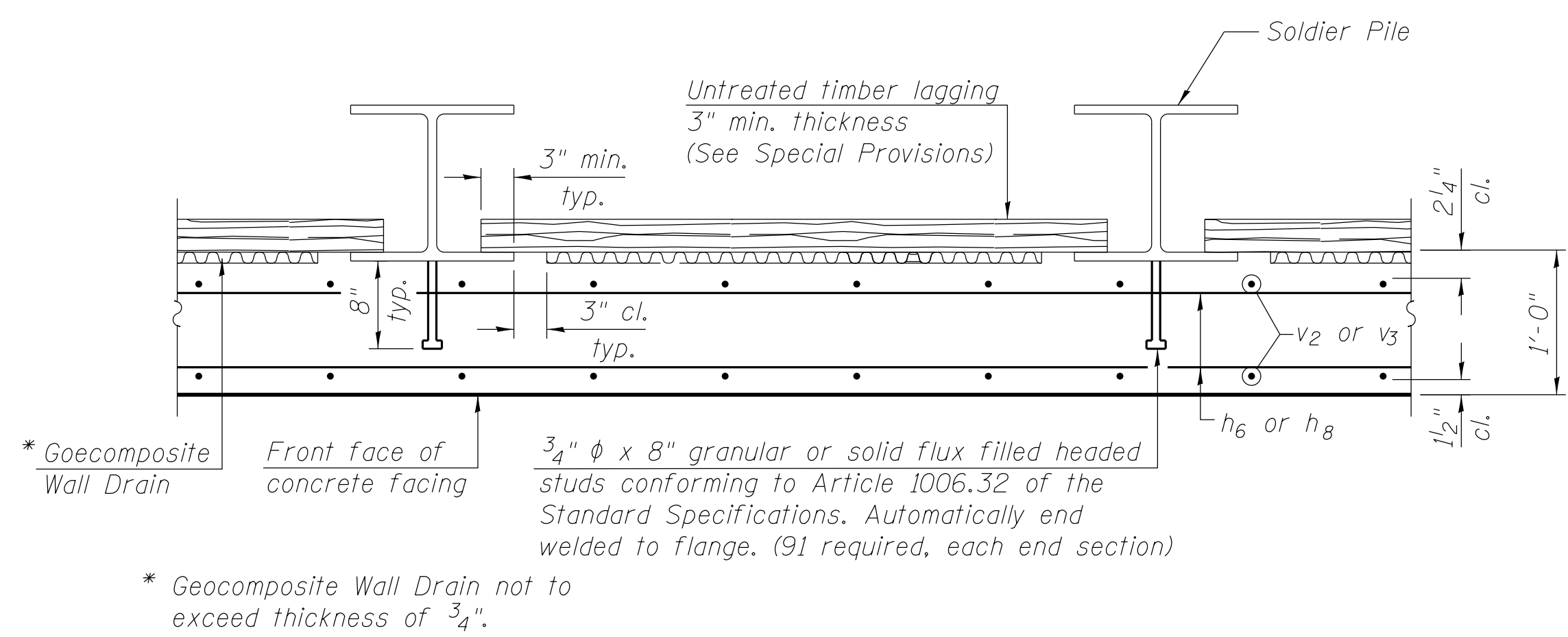
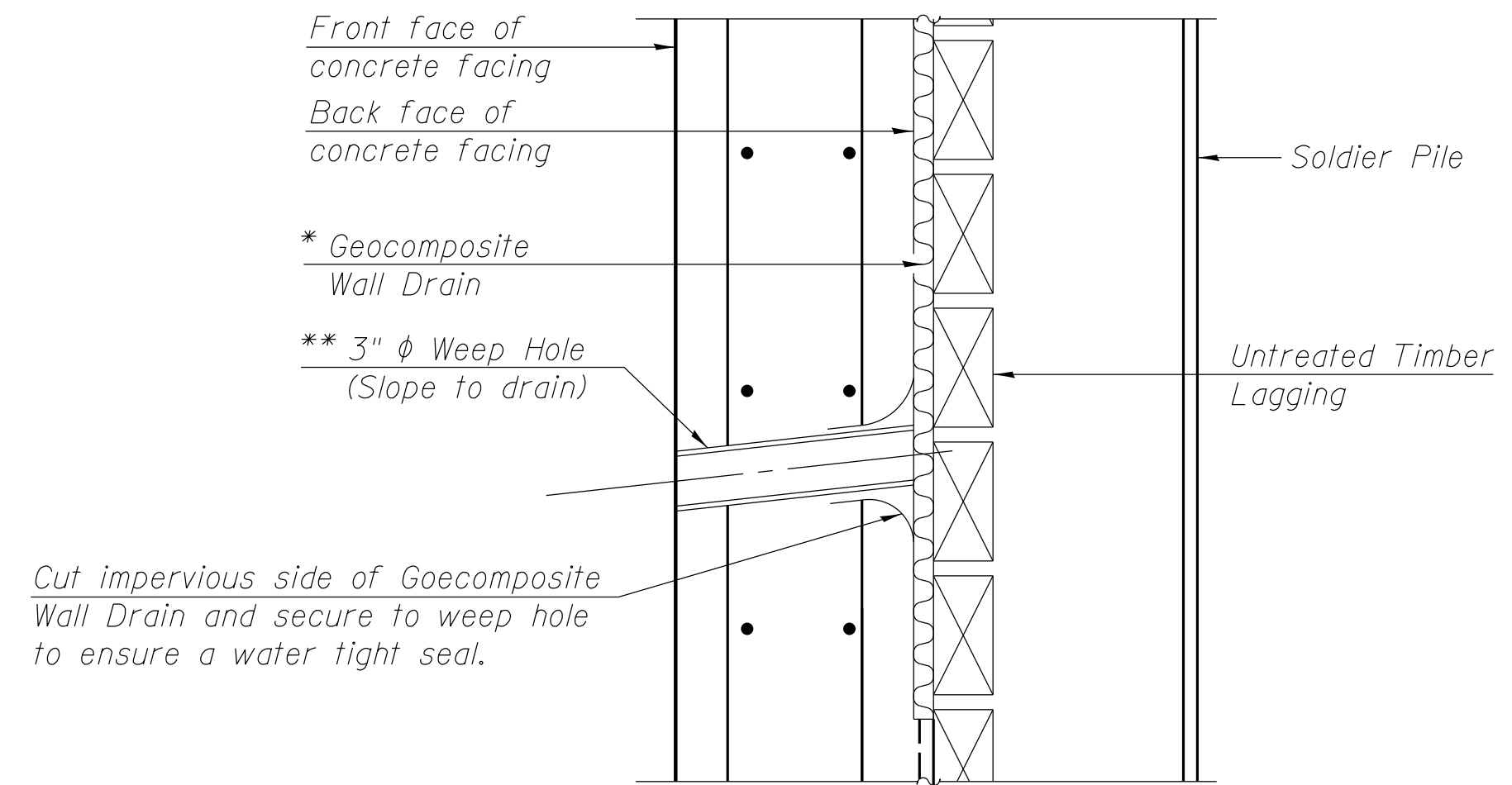


SECTION F-F

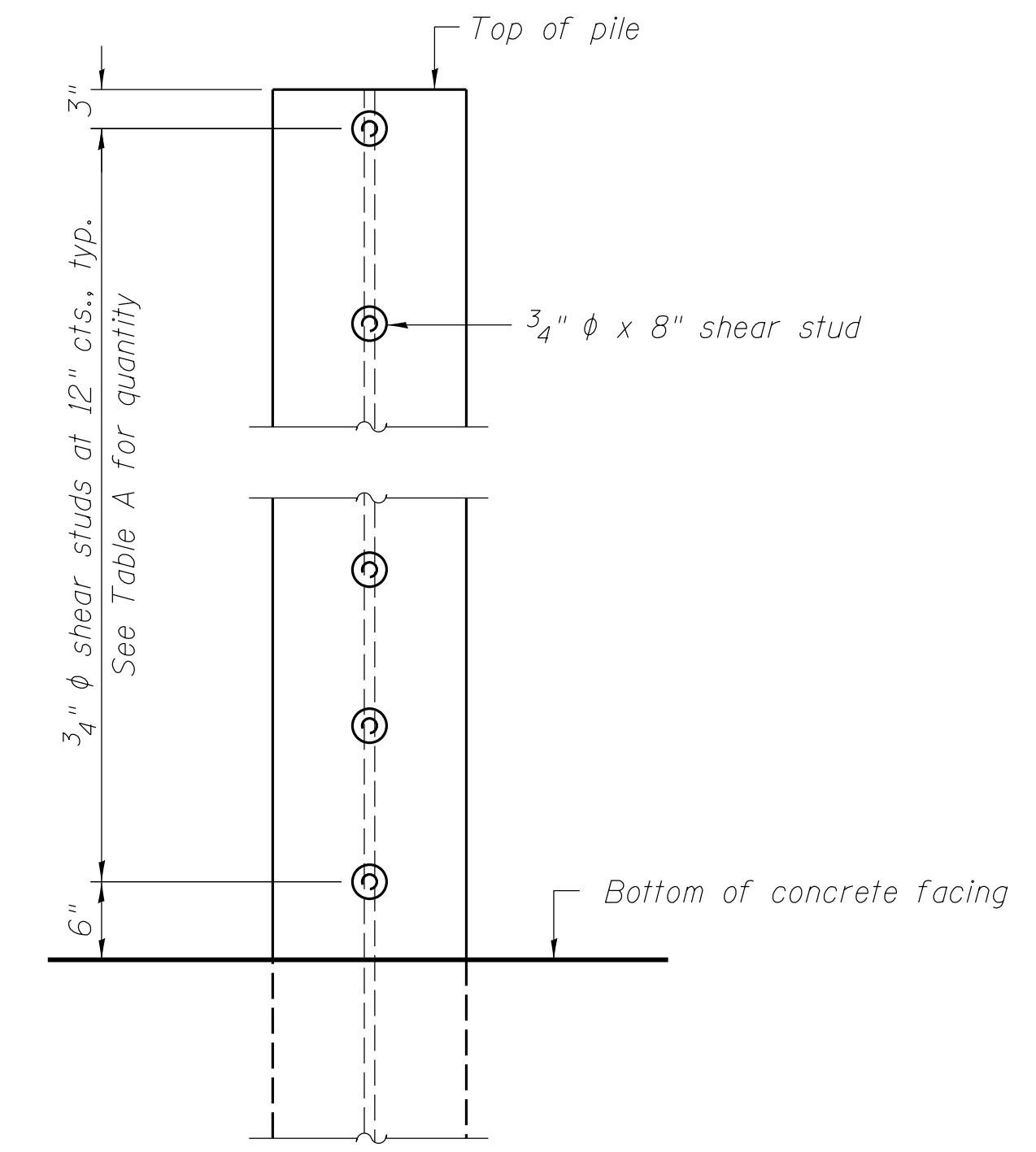


SECTION G-G



WEEP HOLE DRAIN DETAIL

Note:
The Contractor is responsible for the design and performance of the lagging using no less than a 3 in. nominal rough-sawn thickness and timber with a minimum allowable bending stress of 1000 psi.



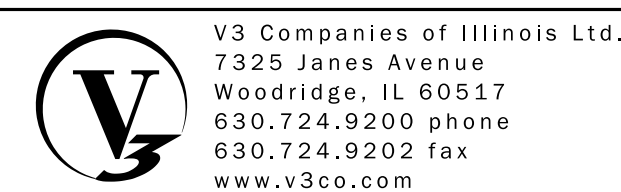
SHEAR STUD DETAIL
(Elevation of Pile Shown)

TABLE A
(Upstream)

Soldier Pile	Pile Size	Top Elevation (ft.)	Bottom Elevation (ft.)	Total Height (ft.)	Number of Shear Studs
1	HP 14 x 117	668.98	641.7	27.28	12
2	HP 14 x 117	668.32	641.7	26.62	12
3	HP 14 x 117	667.66	641.7	25.96	11
4	HP 14 x 117	667.00	641.7	25.30	11
5	HP 14 x 117	666.34	641.7	24.64	10
6	HP 8x36 (min.)	665.32	647.6	17.72	—
7	HP 14 x 117	668.98	641.7	27.28	12
8	HP 14 x 117	668.30	641.7	26.59	12
9	HP 14 x 117	667.62	641.7	25.92	11
10	HP 8x36 (min.)	666.60	646.6	20.20	—

TABLE A
(Downstream)

Soldier Pile	Pile Size	Top Elevation (ft.)	Bottom Elevation (ft.)	Total Height (ft.)	Number of Shear Studs
1	HP 14 x 117	668.92	641.6	27.31	12
2	HP 14 x 117	668.26	641.6	26.66	12
3	HP 14 x 117	667.60	641.6	26.00	11
4	HP 14 x 117	666.94	641.6	25.34	11
5	HP 14 x 117	666.28	641.6	24.68	10
6	HP 8x36 (min.)	665.26	647.6	17.66	—
7	HP 14 x 117	668.92	641.6	27.31	12
8	HP 14 x 117	668.24	641.6	26.64	11
9	HP 14 x 117	667.56	641.6	25.96	11
10	HP 8x36 (min.)	666.54	646.3	20.24	—



USER NAME =	DESIGNED - CJB	REVISED -
PLOT SCALE =	CHECKED - CCF	REVISED -
PLOT DATE =	DRAWN - CCF	REVISED -
	CHECKED - CJB	REVISED -

STATE OF ILLINOIS
DEPARTMENT OF TRANSPORTATION

BOX CULVERT END SECTION DETAILS
STRUCTURE NO. 050-2056

SHEET NO. 5 OF 7 SHEETS

F.A.P. RTE.	SECTION	COUNTY	TOTAL SHEETS	SHEET NO.
786	(110) BR-3	LASALLE	69	38
CONTRACT NO. 66B19				

ILLINOIS FED. AID PROJECT