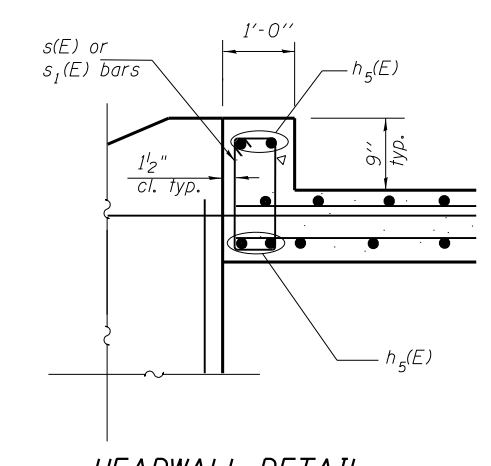
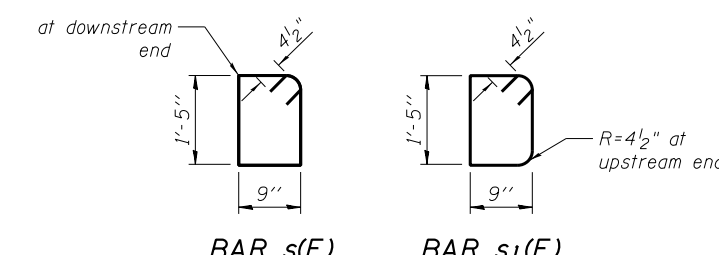
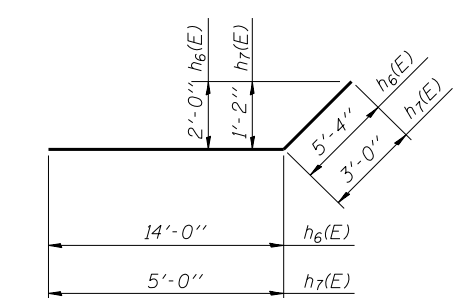
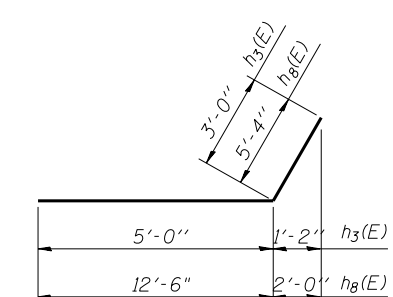
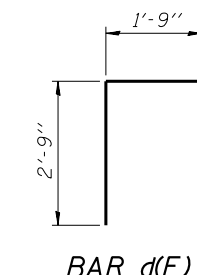
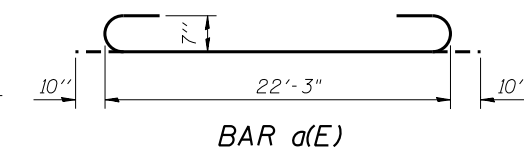
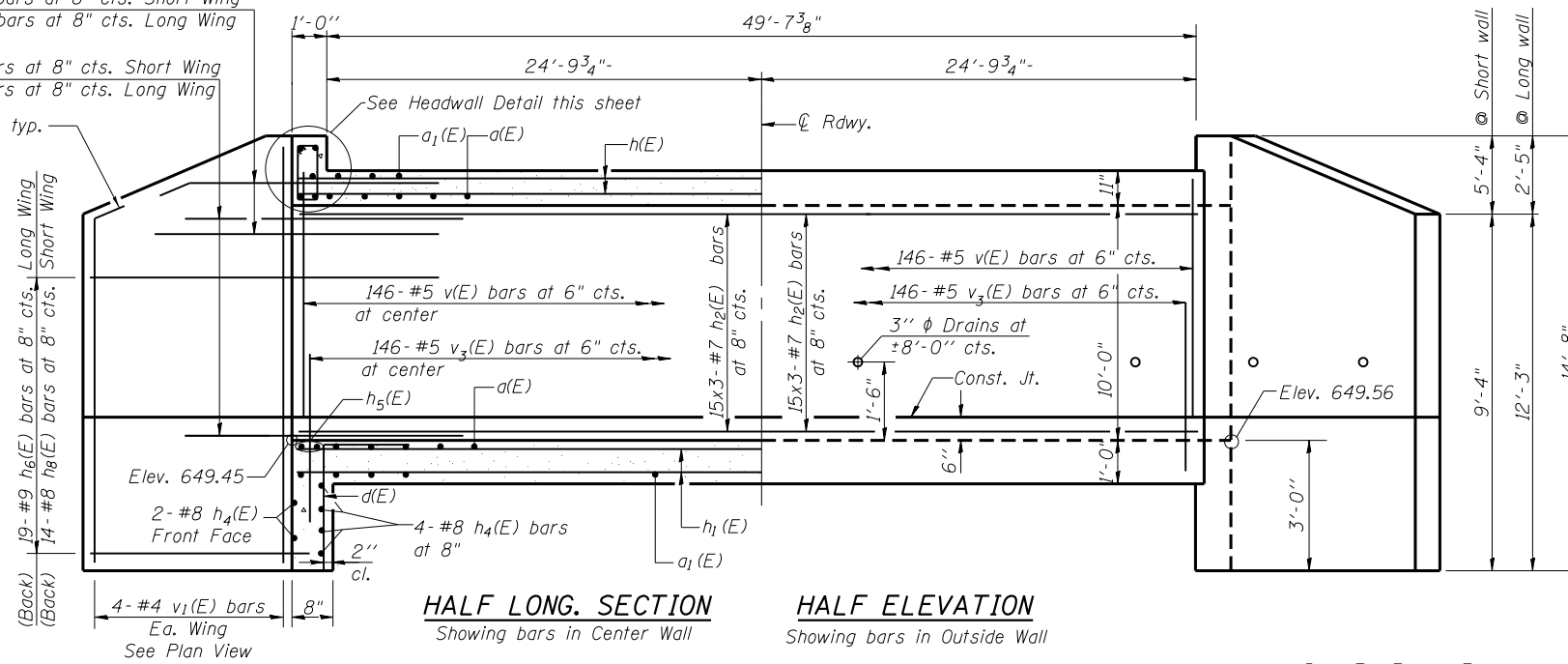


(Back)
7- #8 h₃(E) bars at 8" cts. Short Wing
3- #9 h₇(E) bars at 8" cts. Long Wing

(Front)
16- #8 h₃(E) bars at 8" cts. Short Wing
16- #9 h₇(E) bars at 8" cts. Long Wing



BILL OF MATERIAL - SHEETS 3 & 4 OF 6

Bar	No.	Size	Length	Shape
a(E)	220	#7	23'-11"	
a ₁ (E)	220	#7	22'-3"	
d(E)	46	#4	4'-6"	
h(E)	138	#6	26'-10"	
h ₁ (E)	114	#5	26'-5"	
h ₂ (E)	135	#7	27'-8"	
h ₃ (E)	46	#8	8'-0"	
h ₄ (E)	12	#8	29'-6"	
h ₅ (E)	12	#8	29'-6"	
h ₆ (E)	38	#9	19'-4"	
h ₇ (E)	38	#9	8'-0"	
h ₈ (E)	28	#8	17'-10"	
h ₉ (E)	56	#5	15'-3"	
v(E)	442	#5	10'-7"	
v ₁ (E)	16	#4	14'-4"	
v ₂ (E)	64	#5	12'-0"	
v ₃ (E)	442	#5	4'-6"	
s(E)	30	#4	5'-1'	
s ₁ (E)	30	#4	5'-0"	
			Structure Excavation	Cu. Yd. 41.2
			Concrete Box Culverts	Cu. Yd. 227.0
			Reinforcement Bars, Epoxy Coated	Pound 53,970
			Concrete Structures	Cu. Yd. 14.6
			Stud Shear Connectors	Each 54
			Geocomposite Wall Drain	Sq. Yd. 3.5
			Drilling and Setting Soldier Piles (In Soil)	Cu. Ft. 537
			Untreated Timber Lagging	Sq. Ft. 177
			Furnishing Soldier Piles (HP Section)	Foot 171

* For Soldier Pile portion of wingwalls only.

Notes:
Bars indicated thus 12x4- #5 etc. indicates 12 lines of bars with 4 lengths per line.

I:\Projects\11-208-007_WD 7_Culvert.dwg 2013-08-26 03:56:19-03-culvert_detail.rvt



USER NAME =	DESIGNED - OY	REVISED
PLOT SCALE =	CHECKED - DB	REVISED
PLOT DATE =	DRAWN - CM	REVISED
	CHECKED - JB	REVISED

STATE OF ILLINOIS
DEPARTMENT OF TRANSPORTATION

CULVERT SECTIONS AND ELEVATIONS
STRUCTURE NO. 050-2057

F.A.P. RTE.	SECTION	COUNTY	TOTAL SHEETS	SHEET NO.
786	(110)BR-1	LASALLE	69	43
CONTRACT NO. 66B19				