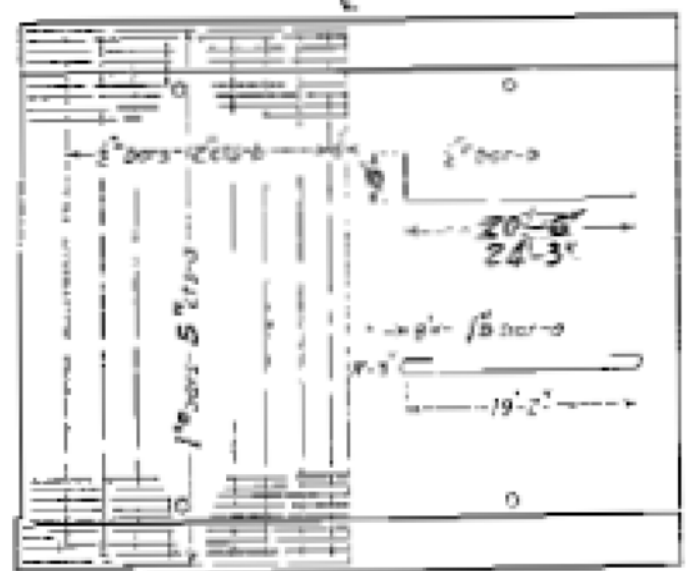
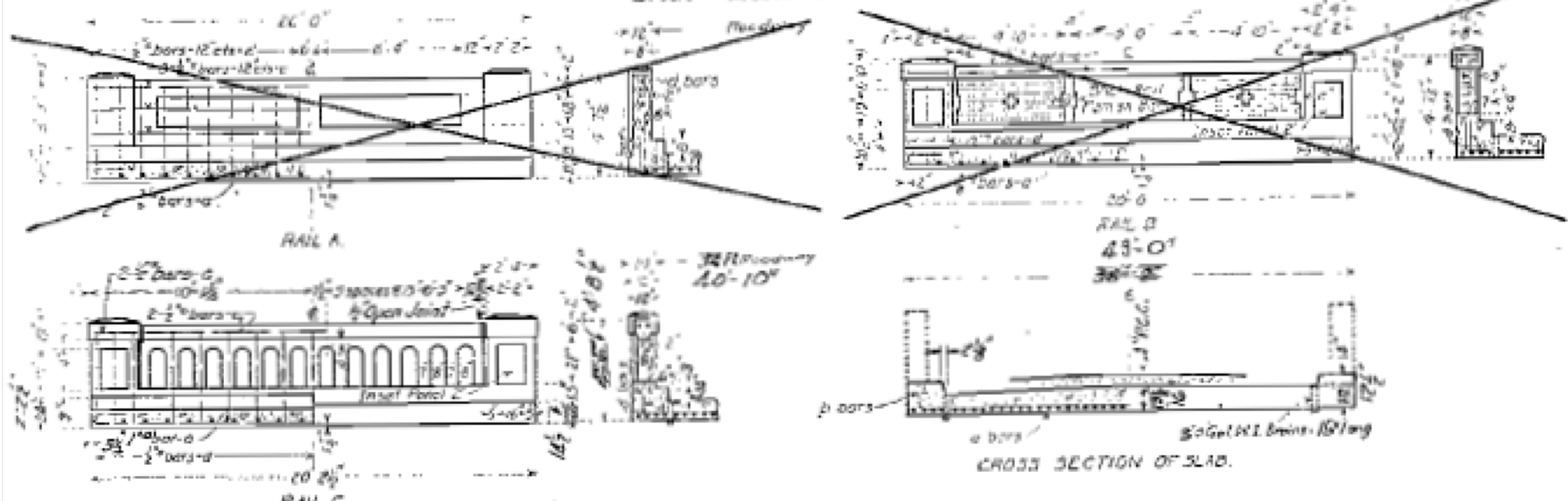


STATE OF ILLINOIS
DEPARTMENT OF PUBLIC WORKS & BUILDINGS
DIVISION OF HIGHWAYS
REINFORCED CONCRETE SLAB
SPAN - EIGHTEEN FEET ON \bar{C}

ROAD DISTRICT NO.	SEC.	COUNTY	TOTAL SHEETS	SHEET NO.	Sheet No. 1 of 3 Sheets
704	110-B	LaSalle	50	49	
FED. ROAD DIST. NO. 7 ILLINOIS FED. AID PROJECT					



BILL OF MATERIAL

	18 FT ROADWAY	24 FT ROADWAY	30 FT ROADWAY	36 FT ROADWAY	40 FT ROADWAY
RAIL A
RAIL B
RAIL C

9-13-32
D. F. Curch
[Signatures]



S.B.L. RT. 70-A SEC. 110-B
LA SALLE COUNTY
STATION 369+42