

Existing I-Beam Bridge Span 12', Rdy 17'
 to be removed by Bridge Contractor.
 B.M. #35-5.21-67-11-51-370-84
 Elev. 676.67

STATE OF ILLINOIS
 DEPARTMENT OF PUBLIC WORKS & BUILDINGS
 DIVISION OF HIGHWAYS

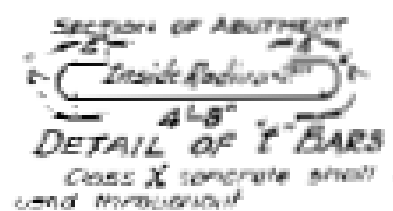
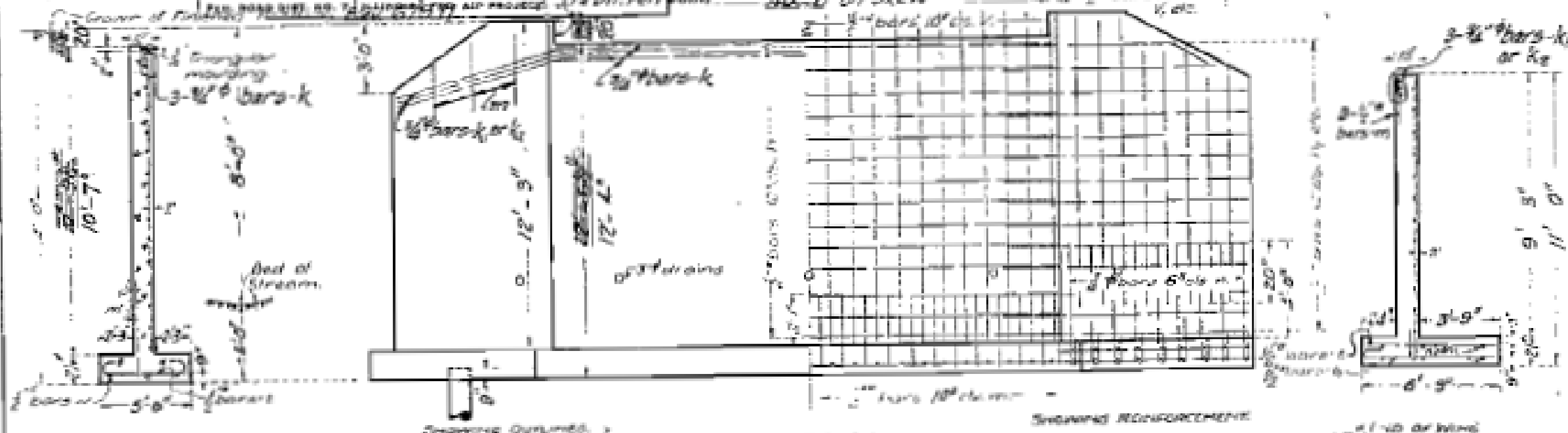
Long Wing - 3V₁-4V₂-4V₂-9H₂-2H₂
 2H₂ - 11Z - 6H₂-3K₂
 Short Wing - 2V₁-2V₁-3V₁-9H₂-2H₂
 16L₁ - 6Z - 6H₂-3K₂

3 Sheets.

ROUTE NO.	SEC.	COUNTY	TOTAL SHEETS	SHEET NO.
70A	110B	LaSalle	50	49

REQUIREMENTS FOR SLAB BRIDGE

HEIGHT OVER ALL 14 FEET

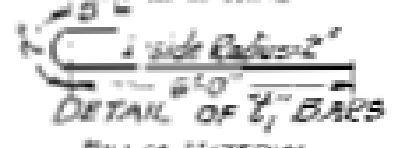
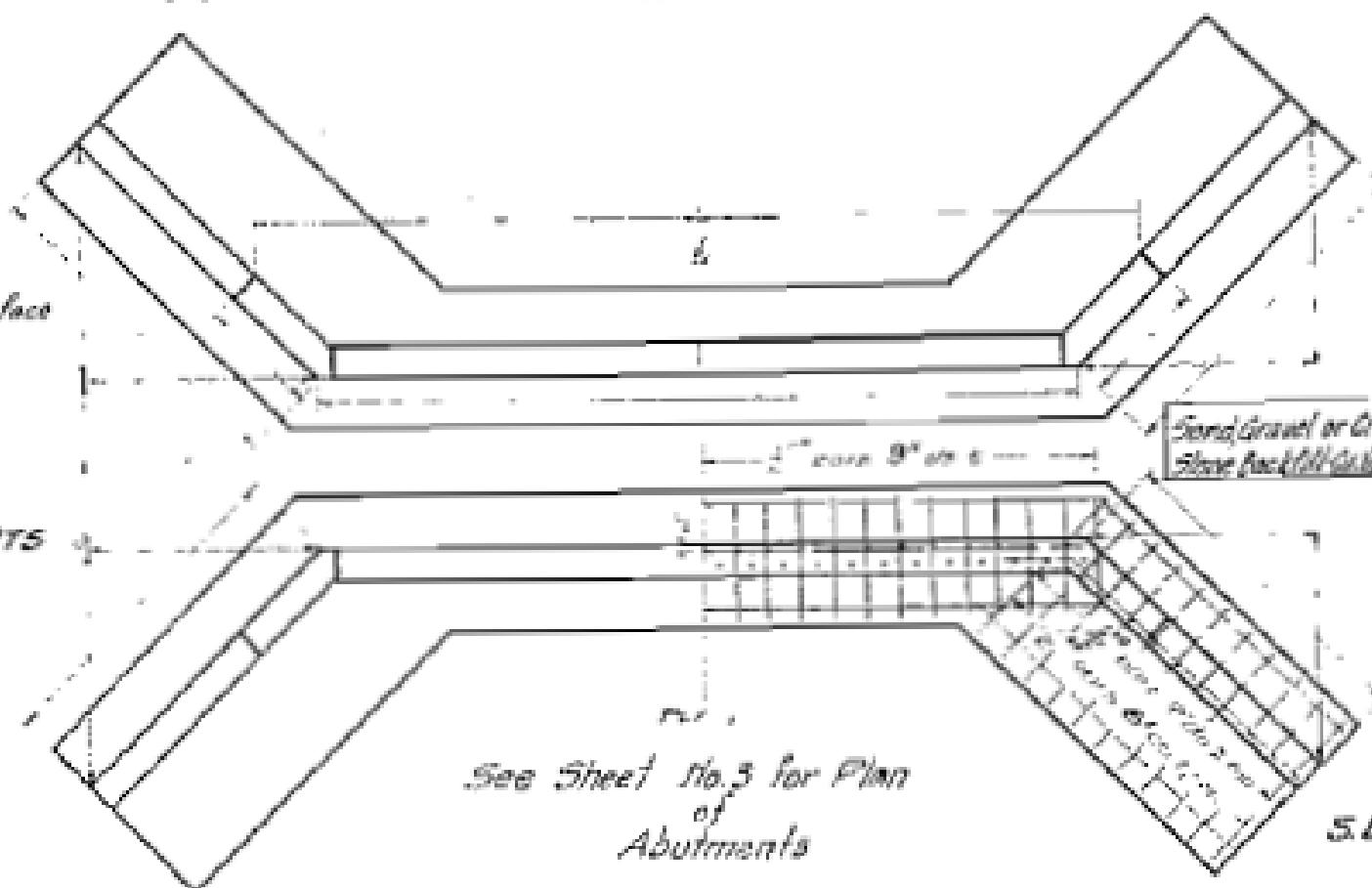


All reinforcing steel shall be securely wired in place before concrete is poured.



NO.	DATE	BY	REVISION
1	11-1-51	W. J.
2	11-1-51	W. J.

9-3-32
 D. T. Church
 Designer



BILL OF MATERIAL

NO.	SIZE	LENGTH
1	100	11'-9"
2	10	2'-9"
3	12	2'-6"
4	14	7'-0"
5	40	2'-0"
6	18	2'-6"
7	4	9'-0"
8	16	8'-6"
9	12	1'-0"
10	4	5'-6"
11	20	7'-0"
12	32	6'-6"
13	8	2'-0"
14	12	8'-6"
15	12	3'-0"
16	12	8'-0"
17	8	13'-6"
18	6	9'-6"

S.B. RT. 70-A SEC. 110-B
 LA SALLE COUNTY
 STATION 369+42