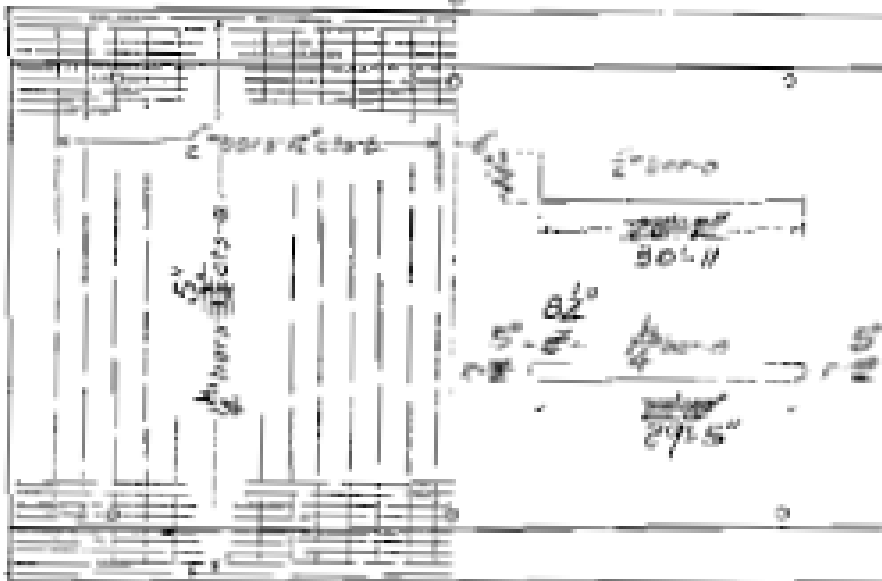
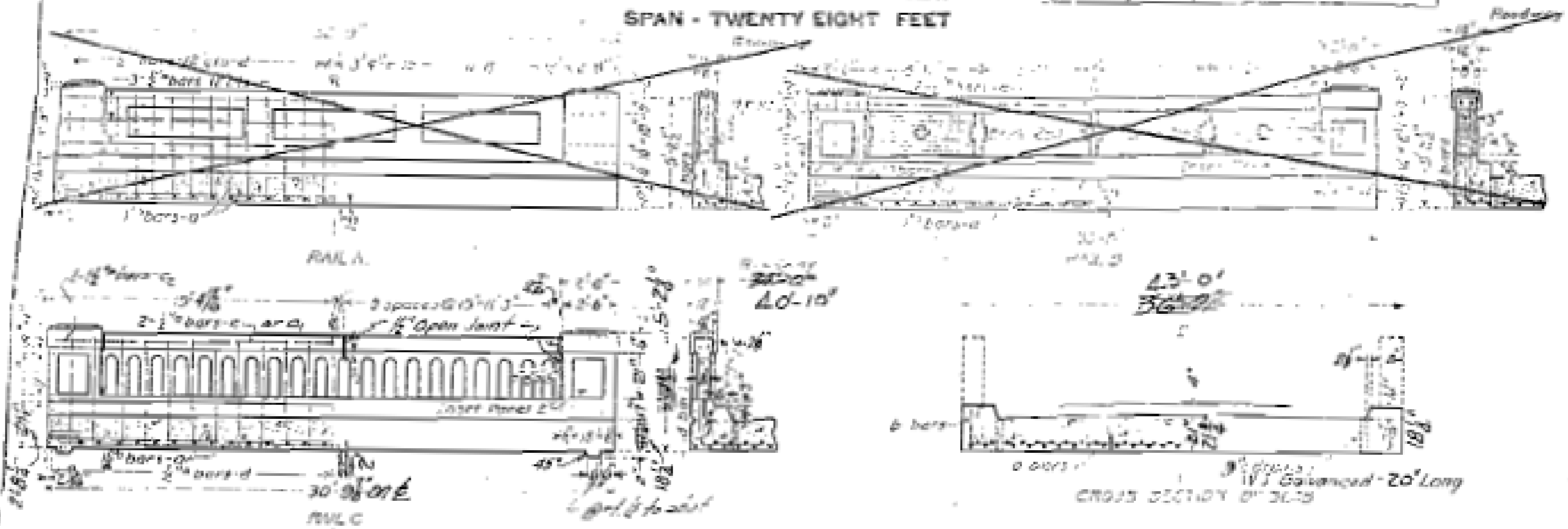


STATE OF ILLINOIS
DEPARTMENT OF PUBLIC WORKS & BUILDINGS
DIVISION OF HIGHWAYS

ROAD DISTRICT NO.	SEC.	COUNTY	TOTAL SHEETS	SHEET NO.
57A	9A	Lasalle	30	50
FED. ROAD DIST. NO. 7 ILLINOIS FED. AID PROJECT				

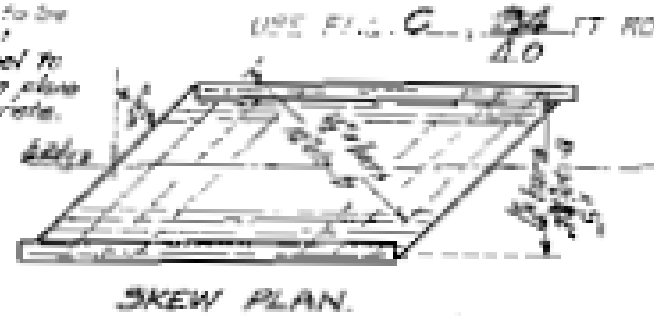
Sheet No. 50 of 30 Sheets

REINFORCED CONCRETE SLAB
SPAN - TWENTY EIGHT FEET



	18 FT. ROADWAY	20 FT. ROADWAY	22 FT. ROADWAY	24 FT. ROADWAY	26 FT. ROADWAY
Area (sq. ft.)	324	400	484	576	676
Volume (cu. ft.)	1134	1360	1672	1997	2321
Weight (lb.)	113400	136000	167200	199700	232100
Reinforcement (lb.)	11340	13600	16720	19970	23210
Concrete (cu. yd.)	41.8	50.0	61.9	72.9	85.8
Reinforcement (cu. yd.)	4.18	5.00	6.19	7.29	8.58

Class of concrete to be used throughout
All Reinforcing Steel to be wired accurately in place before pouring concrete.



381.9
351.5
315.0
275.0

USE FIG. C, 20 FT. ROADWAY

Floor Drains E

381.9
351.5
315.0
275.0

381.9
351.5
315.0
275.0

DESIGNED	BY	DATE
DRAWN	BY	DATE
CHECKED	BY	DATE
APPROVED	BY	DATE

9-13-32
D. J. Burch
7-1-33
D. J. Burch