

31' 3" W CORNER E. L. Sta 440+00
 ELEV 671.43
 Existing structure, I-beam, span 24' 0"
 roadway 17' 6" to be removed by Bridge Contractor

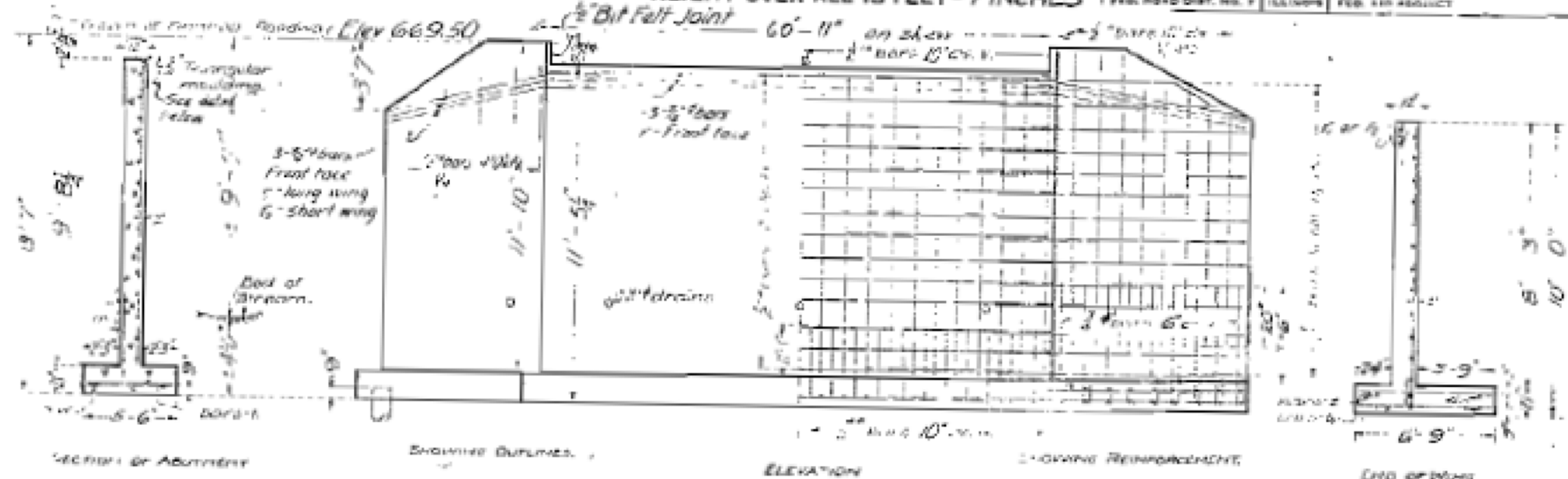
STATE OF ILLINOIS
 DEPARTMENT OF PUBLIC WORKS & BUILDINGS
 DIVISION OF HIGHWAYS

Sheet No 2
 of 3 Sheets

BOND ISSUE REFERENCE NO.	SEC.	COUNTY	TOTAL SHEETS	SHEET NO.
774	728	La Salle	50	50

FED. ROAD DIST. NO. 7 ILLINOIS FEB. 1918 PROJECT

R.C. ABUTMENTS FOR SLAB BRIDGE
 HEIGHT OVER ALL 13 FEET - 7 INCHES



Section of Abutment

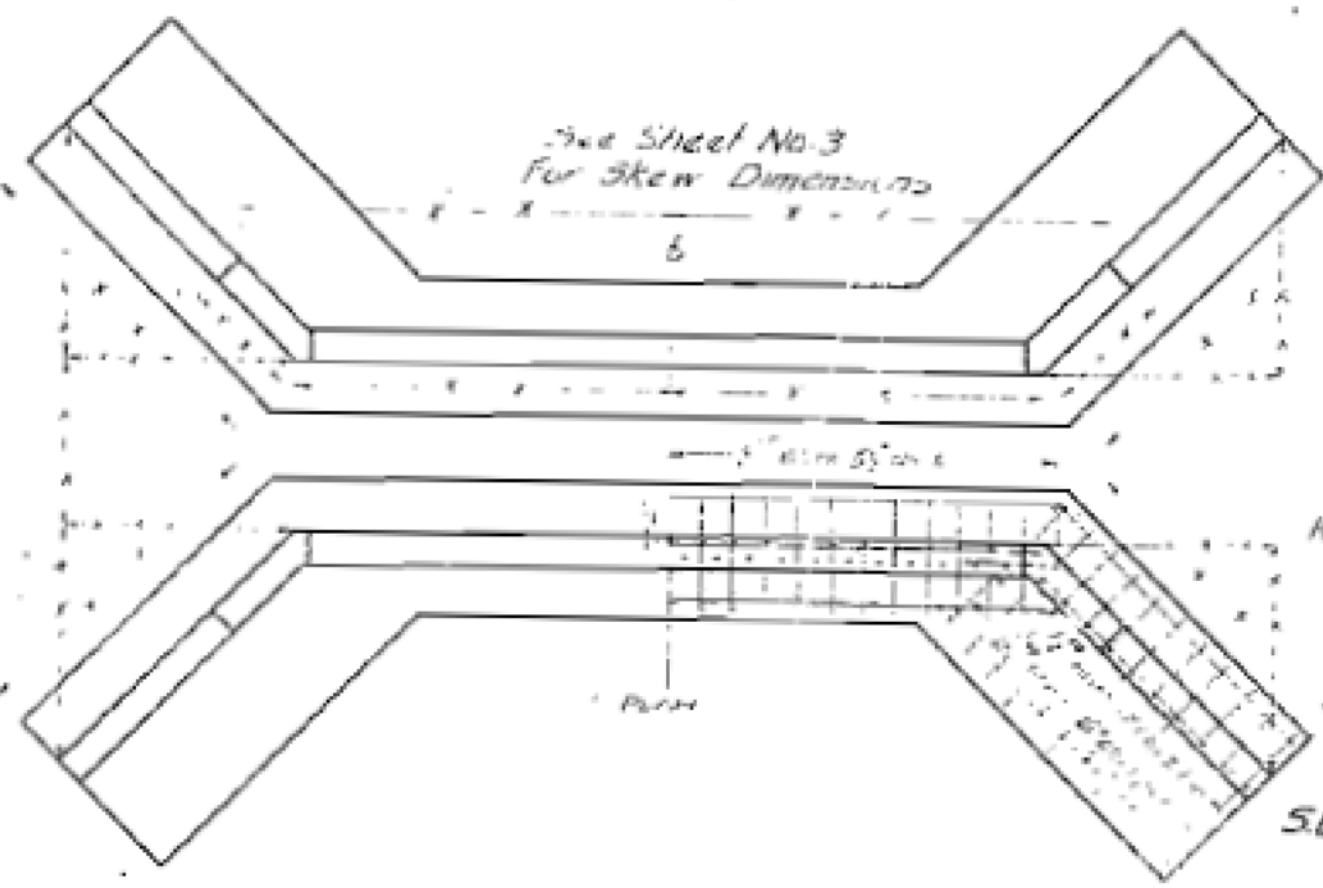
Showing Details

ELEVATION

Showing Reinforcement

END OF VIEW

Use concrete curb in roadway
 in widening road when
 work is placed
 6' 6" level
 1/2 bars
 1 bar



NO.	SIZE	LENGTH	AREA
1	12	24	288
2	6	54	324
3	6	54	324
4	6	54	324
BILL OF MATERIALS			
NO.	SIZE	LENGTH	AREA
1	12	24	288
2	12	24	288
3	12	24	288
4	12	24	288
5	12	24	288
6	12	24	288
7	12	24	288
8	12	24	288
9	12	24	288
10	12	24	288
11	12	24	288
12	12	24	288
13	12	24	288
14	12	24	288
15	12	24	288
16	12	24	288
17	12	24	288
18	12	24	288
19	12	24	288
20	12	24	288
21	12	24	288
22	12	24	288
23	12	24	288
24	12	24	288
25	12	24	288
26	12	24	288
27	12	24	288
28	12	24	288
29	12	24	288
30	12	24	288
31	12	24	288
32	12	24	288
33	12	24	288
34	12	24	288
35	12	24	288
36	12	24	288
37	12	24	288
38	12	24	288
39	12	24	288
40	12	24	288
41	12	24	288
42	12	24	288
43	12	24	288
44	12	24	288
45	12	24	288
46	12	24	288
47	12	24	288
48	12	24	288
49	12	24	288
50	12	24	288

S.B. ROUTE 70-A SEC. 110-B
 LASALLE CO.
 STA. 445+54