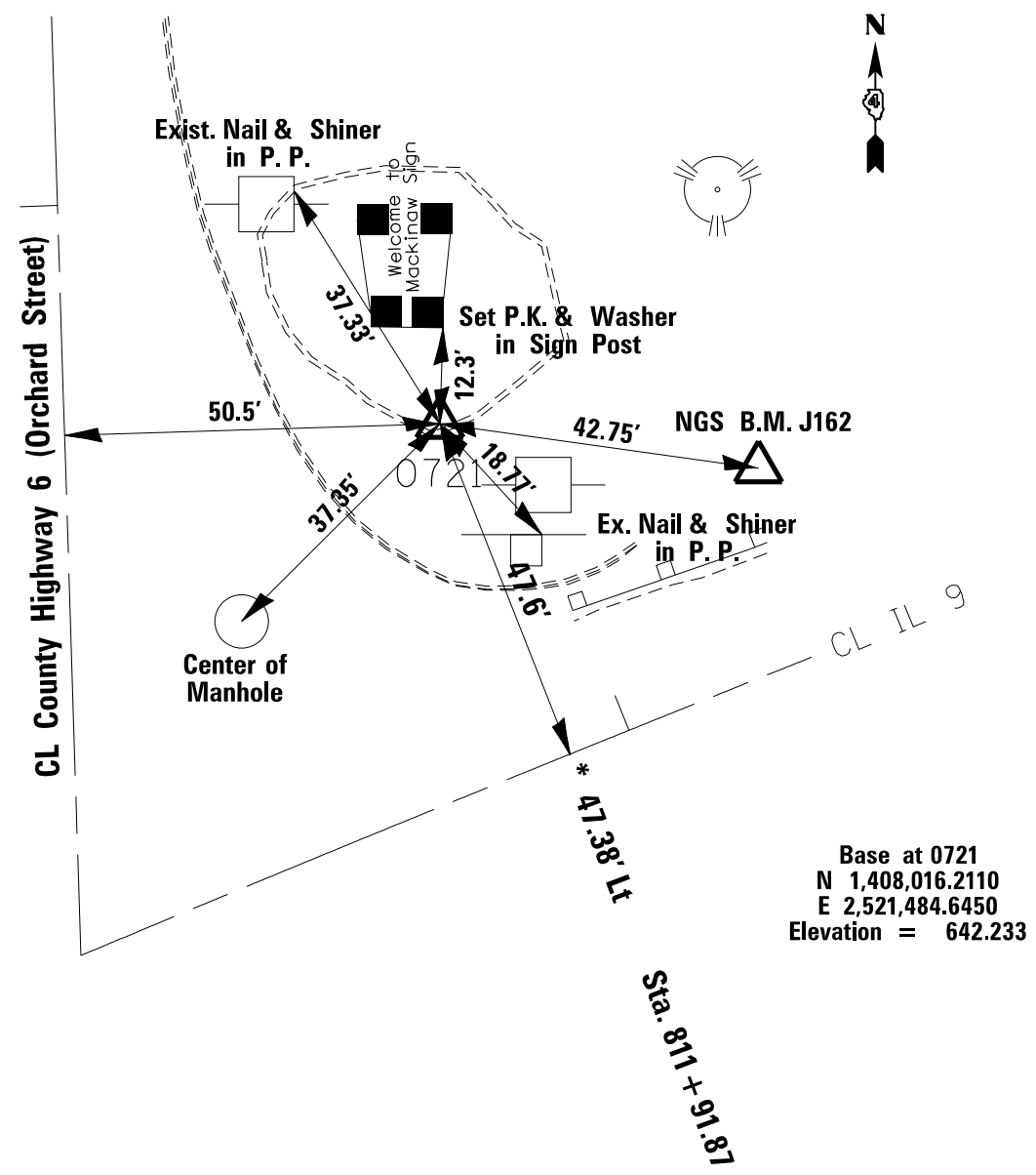
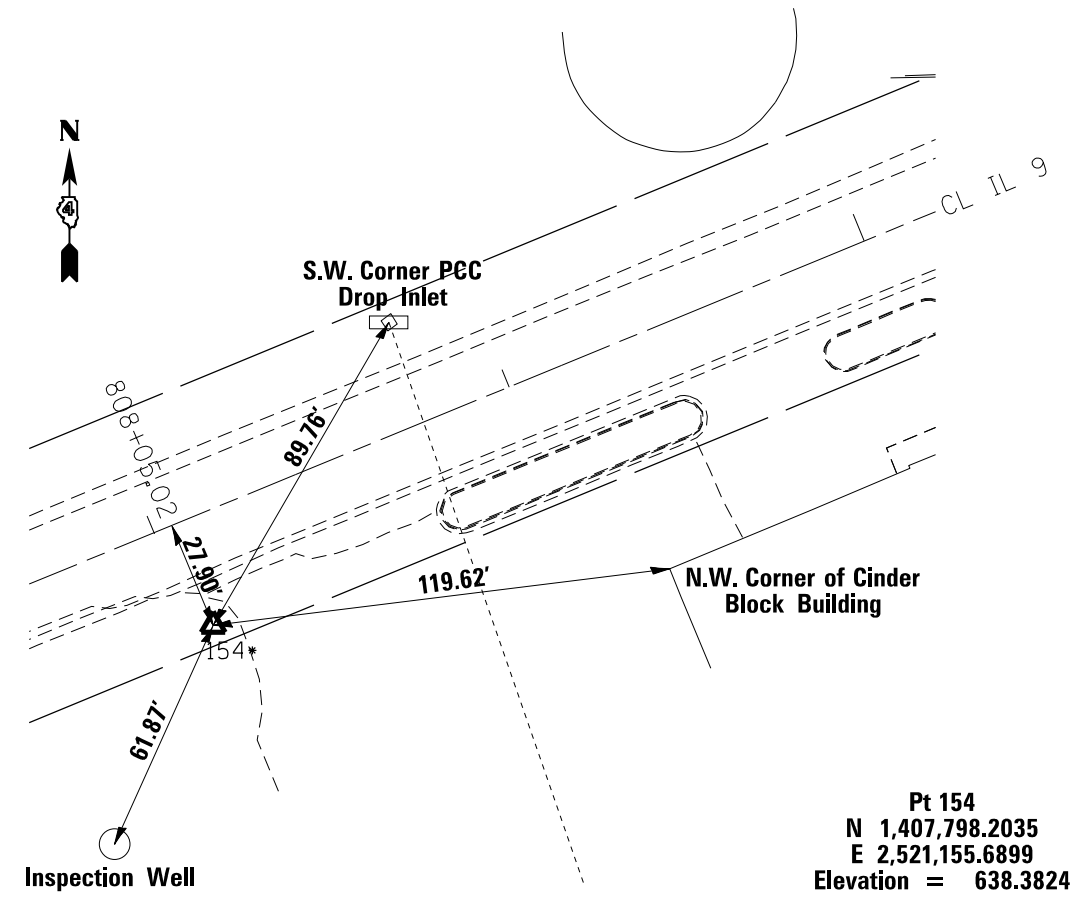


Ties to D4 0721 Data Spike inside BMAC vault
NE Quad of IL Route 9 & Co Hwy 6 (Orchard Road)



Base at 0721
N 1,408,016.2110
E 2,521,484.6450
Elevation = 642.233

Ties to 154 (10" Spike Flush)
* 28.79' Rt. Sta. 808 + 05.02



Pt 154
N 1,407,798.2035
E 2,521,155.6899
Elevation = 638.3824

FILE NAME = c:\temp\68b05\04_68B05-sh1-cover.dgn	USER NAME = keathbr	DESIGNED -	REVISED -
Default	PLOT SCALE = 50.0000' / in.	DRAWN -	REVISED -
	PLOT DATE = 10/17/2013	CHECKED -	REVISED -
		DATE -	REVISED -

STATE OF ILLINOIS
DEPARTMENT OF TRANSPORTATION

ALIGNMENT, TIES AND BENCHMARKS

SCALE: SHEET OF SHEETS STA. 809.25 TO STA. 812+75

F.A.P. RTE.	SECTION	COUNTY	TOTAL SHEETS	SHEET NO.
693	120N	TAZEWELL	51	15
CONTRACT NO. 68B05				
ILLINOIS FED. AID PROJECT				