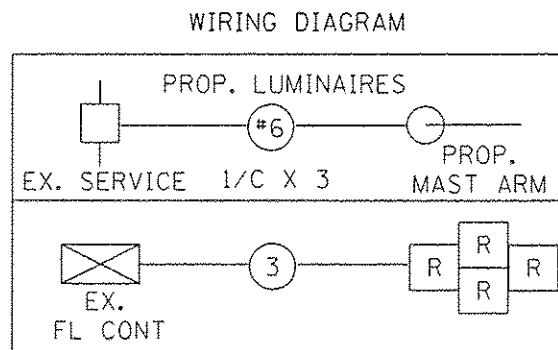
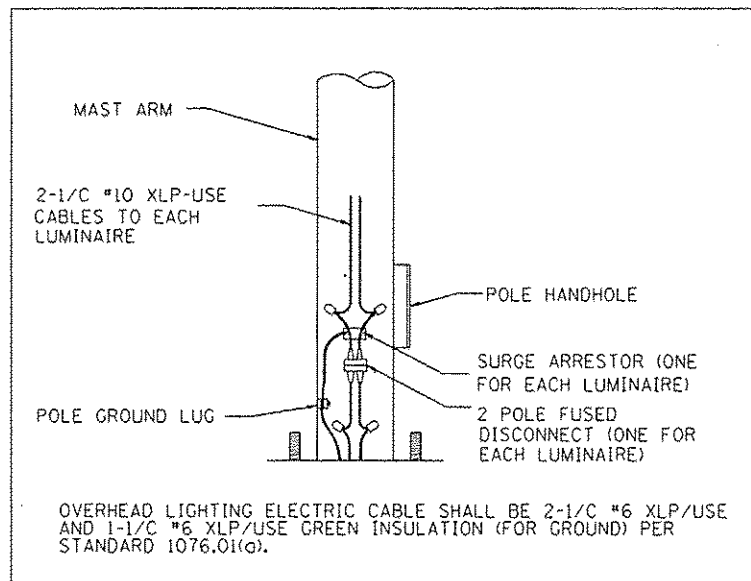


LUMINAIRE WIRING DETAIL (WIRED AT 240V)



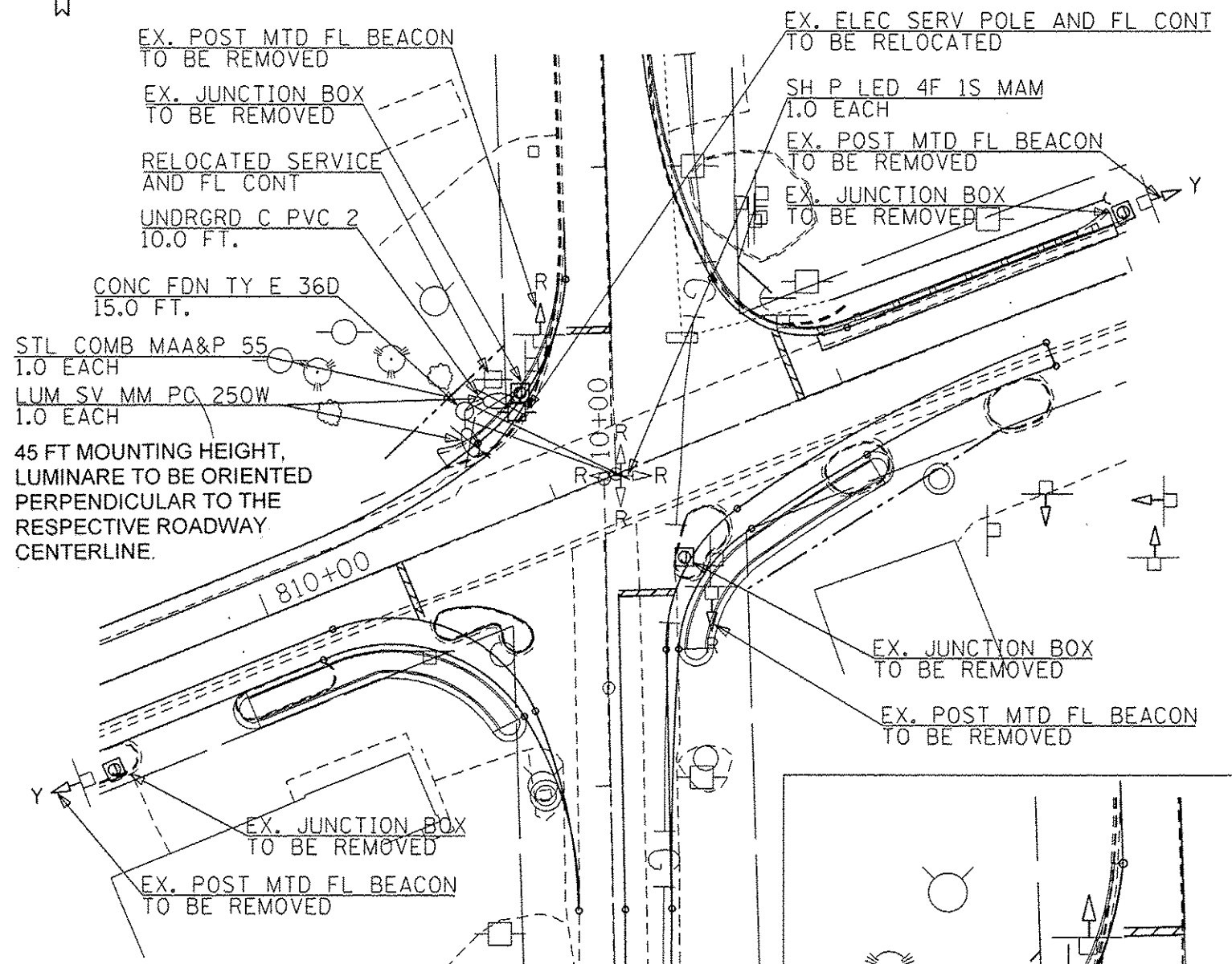
SCHEDULE OF QUANTITIES - IL 9 & ORCHARD ST. FLASHING BEACON

ITEM DESCRIPTION	UNIT	TOTAL QTY.
UNDERGROUND CONDUIT, PVC, 2" DIA.	FOOT	10
ELECTRIC CABLE IN CONDUIT, 600V, (XLP-TYPE USE) 1/2 NO. 6	FOOT	54
LUMINAIRE, SODIUM VAPOR, MULTI-MOUNT, PHOTO-CELL CONTROL, 250 WATT	EACH	2
ELECTRIC CABLE IN CONDUIT, SIGNAL, NO. 14 3C	FOOT	91
STEEL COMBINATION MAST ARM ASSEMBLY AND POLE 55 FT. EACH	EACH	1
CONCRETE FOUNDATION, TYPE E, 36-INCH DIAMETER	FOOT	15
SIGNAL HEAD, POLYCARBONATE, LED, 4-FACE, 1-SECTION, MAST ARM MOUNTED	EACH	1
REMOVE EXISTING TRAFFIC SIGNAL EQUIPMENT	EACH	1
RELOCATE ELECTRIC SERVICE	EACH	1

CONSTRUCTION NOTES

- ANY MAINTENANCE OF EXISTING TRAFFIC SIGNALS WILL BE CONSIDERED EXTRA WORK IN ACCORDANCE WITH ARTICLE 109.04 OF THE STANDARD SPECIFICATIONS.
- THE LOCATION OF ALL UTILITIES AND PRIVATELY OWNED FACILITIES SHALL BE FIELD VERIFIED BY THE CONTRACTOR PRIOR TO THE INSTALLATION OF ANY COMPONENTS.
- THE CONTRACTOR SHALL BE RESPONSIBLE FOR LOCATING EXISTING IDOT ELECTRICAL FACILITIES AT HIS/HER OWN EXPENSE IF REQUIRED. THE CONTRACTOR SHALL ALSO BE LIABLE FOR ANY DAMAGE TO IDOT FACILITIES RESULTING FROM INACCURATE LOCATING.
- ELECTRICAL WORK SHALL CONFORM WITH NATIONAL, STATE, AND LOCAL CODES.
- ALL TRAFFIC SIGNAL SECTIONS SHALL HAVE 12" SINGLE LED LENSES.
- THE RED SECTIONS OF THE SIGNAL HEADS SHARING THE SAME MAST ARM SHALL BE LEVEL WITH ONE ANOTHER AND MAINTAIN A 17 FT. MINIMUM CLEARANCE FROM THE HIGHEST POINT OF THE ROADWAY.
- ALL TRAFFIC SIGNAL HEAD BRACKETS ARE TO BE ALUMINUM WITH A NATURAL FINISH.
- THE EXISTING FLASHING BEACONS SHALL REMAIN IN OPERATION DURING THE CONSTRUCTION OF THE PROPOSED FLASHING BEACON AND ELECTRIC SERVICE RELOCATION.
- THE CONTRACTOR SHALL PROVIDE ELECTRICAL CABLE SLACK IN ACCORDANCE WITH ARTICLE 873.03.
- ELECTRICAL CABLE WILL BE MEASURED FOR PAYMENT IN ACCORDANCE WITH ARTICLE 873.04.
- ALL SURPLUS MATERIALS SHALL BE DISPOSED OF IN ACCORDANCE WITH ARTICLE 202.03 OF THE STANDARD SPECIFICATIONS.

THE PROPOSED COMBINATION MAST ARM ASSEMBLY SHALL BE EQUIPPED WITH A TWIN TENON TOP FOR LUMINAIRE MOUNTING. THE COST OF THE TWIN TENON MOUNT SHALL BE INCLUDED IN THE PRICE OF THE MAST ARM.



THE PROPOSED BEACON SHALL BE LOCATED OVER THE INTERSECTION CENTER LINES OF IL 9 & ORCHARD ST.



FILE NAME :	USER NAME :	DESIGNED :	REVISED :
C:\temp\68805\04_68805-shr-cover.dgn	hethbr	-	-
		DRAWN :	REVISED :
		-	-
		CHECKED :	REVISED :
		-	-
Default		DATE :	REVISED :
		-	-

STATE OF ILLINOIS DEPARTMENT OF TRANSPORTATION

PROPOSED FLASHING BEACON INSTALLATION	
IL 9 & ORCHARD STREET	
SCALE:	SHEET 1 OF 1 SHEETS

F.A.P. RTE.	SECTION	COUNTY	TOTAL SHEETS	SHEET NO.
693	120N	TAZEWELL	51	23
CONTRACT NO. 68805				
ILLINOIS FED. AID PROJECT				