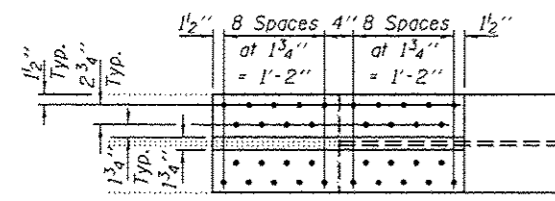
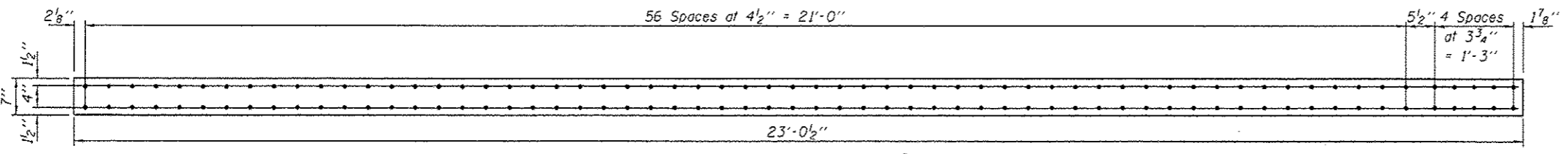
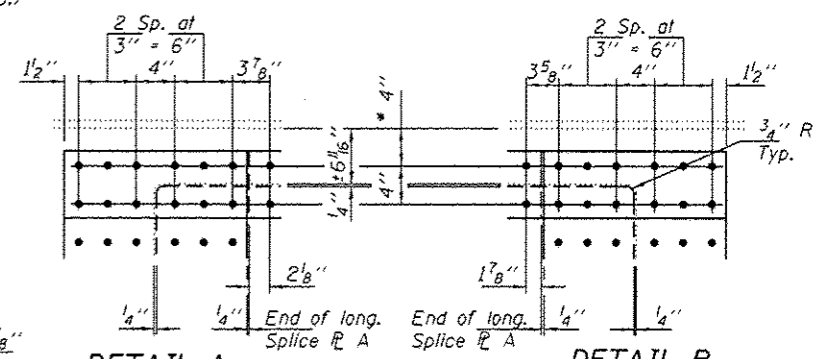


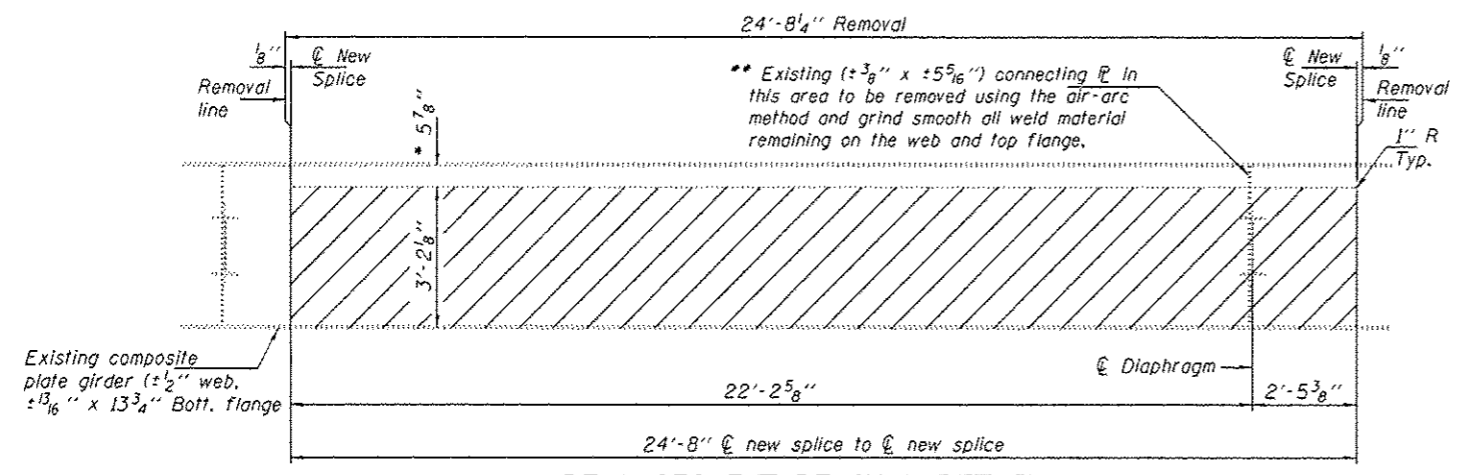
PARTIAL BEAM ELEVATION



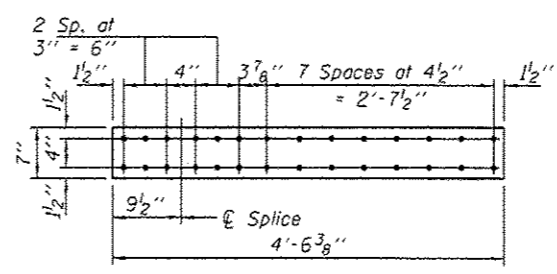
BOTTOM SPLICE DETAIL



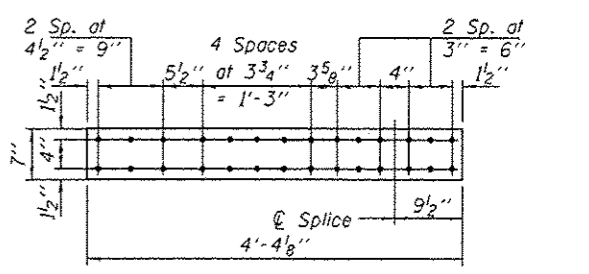
LONGITUDINAL SPLICE R A
R 3/8" x 7" x 23'-0 1/2" (6 Required)



BEAM SEGMENT REMOVAL DETAIL



CONTINUITY R A
R 3/8" x 7" x 4'-6 3/8" (NTR) (6 Required)



CONTINUITY R B
R 3/8" x 7" x 4'-4 1/8" (NTR) (6 Required)

* Measured from bottom of top flange

Hatched areas indicate removal. All cut edges are to be ground smooth and be free of any nicks, gouges or irregularities.

** Girder 1, W. side only
Girder 3, both sides
Girder 7, E. side only

DESIGNED GGE	EXAMINED	DATE NOVEMBER 18, 2013	STATE OF ILLINOIS DEPARTMENT OF TRANSPORTATION		REPAIR DETAILS SN 072-0182		F.A.I. RTE.	SECTION	COUNTY	TOTAL SHEETS	SHEET NO.
CHECKED ATH	PASSED						14	04 MCHD 2014-1	PEORIA	8	5
DRAWN balliva	ACTING ENGINEER OF BRIDGES AND STRUCTURES								CONTRACT NO. 68864		
CHECKED GGE ATH	ACTING ENGINEER OF BRIDGES AND STRUCTURES						SHEET NO. 3 OF 3 SHEETS			[ILLINOIS] FED. AID PROJECT	