

FAP RTE.	SECTION	COUNTY	TOTAL SHEETS	SHEET NO.
668	28R-1	SANGAMON	354	11

CONTRACT NO. 72501

CODE NO.	ITEM	UNIT	TOTAL QUANTITY	CONSTRUCTION CODE										
				80% FEDERAL 20% STATE	80% FED 20% ST	80% FED 20% ST	80% FEDERAL 10% STATE 10% CITY	80% FEDERAL 15% STATE 5% CITY	80% FEDERAL 20% CITY	80% FED 20% TOWNSHIP				
				ROADWAY/ STORM SEWER	SIDEWALK CITY	CAPITAL TOWNSHIP SIDEWALK	TRAFFIC SIGNALS ELM	TRAFFIC SIGNALS RIDGE	BIKE LANES CITY	BIKE LANES CAPITAL TOWNSHIP				
				0003 URBAN	0021				0028					
M4021010	AGGREGATE SURFACE COURSE, TYPE B	M TON	500	500										
M4060085	PORTLAND CEMENT CONCRETE SURFACE REMOVAL - BUTT JOINT	SO M	229.5	229.5										
M4060200	BITUMINOUS MATERIALS (PRIME COAT)	M TON	189.9	189.9										
M4060300	AGGREGATE (PRIME COAT)	M TON	27.6	27.6										
M4060982	HOT-MIX ASPHALT SURFACE REMOVAL - BUTT JOINT	SO M	3335	3335										
M4060990	TEMPORARY RAMP	SO M	80	80										
M4062125	LEVELING BINDER (MACHINE METHOD), N50	M TON	330	330										
M4062335	POLYMERIZED LEVELING BINDER (MACHINE METHOD), N70	M TON	501	501										
M4063080	HOT-MIX ASPHALT BINDER COURSE, IL-19.0, N50	M TON	56	56										
M4063260	POLYMERIZED HOT-MIX ASPHALT BINDER COURSE, IL-19.0 FG, N70	M TON	3128.1	3128.1										
M4063310	HOT-MIX ASPHALT SURFACE COURSE, MIX "C", N50	M TON	502	502										
M4063540	POLYMERIZED HOT-MIX ASPHALT SURFACE COURSE, MIX "D", N70	M TON	3061.1	3061.1										
M4080500	INCIDENTAL HOT-MIX ASPHALT SURFACING	M TON	453	453										
M4230150	PORTLAND CEMENT CONCRETE DRIVEWAY PAVEMENT, 150MM	SO M	1487	1487										



REVISIONS	
NAME	DATE

ILLINOIS DEPARTMENT OF TRANSPORTATION
SUMMARY OF QUANTITIES
F.A.P. ROUTE 668 (DIRKSEN PARKWAY)
SECTION 28R-1
SANGAMON COUNTY

SCALE: NONE
DATE: 06/2013

DRAWN BY: GE
CHECKED BY: FML

2 12-30-13

14

CONTRACT NO. 72501

CODE NO.	ITEM	UNIT	TOTAL QUANTITY	CONSTRUCTION CODE									
				80% FEDERAL 20% STATE	80% FED 20% ST	80% FED 20% ST	80% FEDERAL 10% STATE 10% CITY	80% FEDERAL 15% STATE 5% CITY	80% FEDERAL 20% CITY	80% STATE 20% TOWNSHIP			
				ROADWAY/ STORM SEWER	SIDEWALK CITY	CAPITAL TOWNSHIP SIDEWALK	TRAFFIC SIGNALS ELM	TRAFFIC SIGNALS RIDGE	BIKE LANES CITY	BIKE LANES CAPITAL TOWNSHIP			
				0003	0021				0028				
URBAN	URBAN	URBAN	URBAN	URBAN	URBAN	URBAN							
M6060500	COMBINATION CONCRETE CURB AND GUTTER, TYPE B-15.30	METER	1138.9	1138.9									
M6060700	COMBINATION CONCRETE CURB AND GUTTER, TYPE B-15.60	METER	409.2	409.2									
M6061600	COMBINATION CONCRETE CURB AND GUTTER, TYPE B-22.60	METER	30.9	30.9									
M6690100	BACKFILL PLUGS	CU M	20.0	20.0									
M6690200	NON-SPECIAL WASTE DISPOSAL	CU M	200	200									
* M7200200	SIGN PANEL - TYPE 2	SO M	2.1				2.1						
* M7800200	PAINT PAVEMENT MARKING-LETTERS AND SYMBOLS	SQM	93	93									
* M7800350	PREFORMED PLASTIC PAVEMENT MARKING, TYPE B - INLAID - LETTERS AND SYMBOLS	SO M	89	89									
* M7800360	PREFORMED PLASTIC PAVEMENT MARKING, TYPE B - INLAID - LINE 125MM	METER	735	735									
* M7800390	PREFORMED PLASTIC PAVEMENT MARKING, TYPE B - INLAID - LINE 600MM	METER	113	113									
* M7809125	MODIFIED URETHANE PAVEMENT MARKING - LINE 125MM	METER	7442	7442									
* M7809150	MODIFIED URETHANE PAVEMENT MARKING - LINE 150MM	METER	1081	1081									
* M7809200	MODIFIED URETHANE PAVEMENT MARKING - LINE 200MM	METER	47	47									
* M7809300	MODIFIED URETHANE PAVEMENT MARKING - LINE 300MM	METER	32	32									
M7830100	PAVEMENT MARKING REMOVAL	SO M	387.0	387.0									

*SPECIALTY ITEM

△ REV. 12/30/13
 △ REV. 10/31/13

REVISIONS		ILLINOIS DEPARTMENT OF TRANSPORTATION	
NAME	DATE	SUMMARY OF QUANTITIES	
		F.A.P. ROUTE 668 (DIRKSEN PARKWAY)	
		SECTION 28R-1	
		SANGAMON COUNTY	
		SCALE: NONE	DRAWN BY: GE
		DATE: 06/2013	CHECKED BY: FML

CONTRACT NO. 72501

2

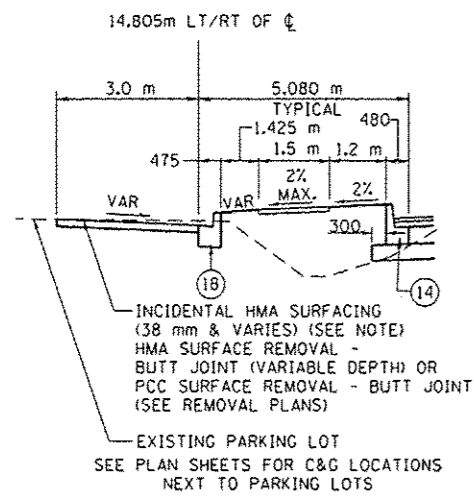
CODE NO.	ITEM	UNIT	TOTAL QUANTITY	CONSTRUCTION CODE								
				80% FEDERAL 20% STATE	80% FED 20% ST	80% FED 20% ST	80% FEDERAL 10% STATE 10% CITY	80% FEDERAL 15% STATE 5% CITY	80% FEDERAL 20% CITY	80% FED 20% TOWNSHIP		
				ROADWAY/ STORM SEWER 0003 URBAN	SIDEWALK CITY 0021 URBAN	CAPITAL TOWNSHIP SIDEWALK 0021 URBAN	TRAFFIC SIGNALS ELM 0021 URBAN	TRAFFIC SIGNALS RIDGE 0021 URBAN	BIKE LANES CITY 0028 URBAN	BIKE LANES CAPITAL TOWNSHIP 0028 URBAN		
* Z0010688	CAMERA MOUNTING ASSEMBLY	EACH	4				4					
Z0013798	CONSTRUCTION LAYOUT	L SUM	1	1								
* Z0033072	VIDEO VEHICLE DETECTION SYSTEM	EACH	2				1	1				
+ Z0070600	TRAINEES	HOURL	2,000	2,000								
Z0041500	PLUG EXISTING CULVERTS	EACH	5	5								
+ Z0070604	TRAINEES, TRAINING PROGRAM GRADUATE	HOURL	2,000	2,000								
MX602314	MANHOLES, TYPE A, 1.2M DIAMETER, TYPE 1 FRAME, CLOSED LID, RESTRICTOR PLATE	EACH	2	2								
M6022047	MANHOLES, TYPE A, 2.1M DIAMETER, TYPE 15 FRAME AND LID	EACH	23	23								
MX602454	MANHOLES, TYPE A, 2.1M DIAMETER, TYPE 1 FRAME, CLOSED LID, RESTRICTOR PLATE	EACH	1	1								
M6022099	MANHOLES, TYPE A, 2.4M DIAMETER, TYPE 15 FRAME AND LID	EACH	1	1								
M6022272	MANHOLES, TYPE A, 2.7M DIAMETER, TYPE 1 FRAME, CLOSED LID	EACH	2	2								
MX602554	MANHOLES, TYPE A, 2.7M DIAMETER, TYPE 1 FRAME, CLOSED LID, RESTRICTOR PLATE	EACH	1	1								
* MZ069961	STORM SEWER (WATER MAIN REQUIREMENTS) EQUIVALENT ROUND-SIZE ELLIPTICAL 600MM	METER	26.0	26.0								
* MZ069970	STORM SEWER (WATER MAIN REQUIREMENTS) EQUIVALENT ROUND-SIZE ELLIPTICAL 900MM	METER	24.5	24.5								
M3565280	BASE COURSE WIDENING 280 MM	SO M	13938	11,984						1,265	689	
MX606368	COMBINATION CONCRETE CURB AND GUTTER, TYPE B-22.30 (SPECIAL)	METER	2477.8	2477.8								

2 12-30-13

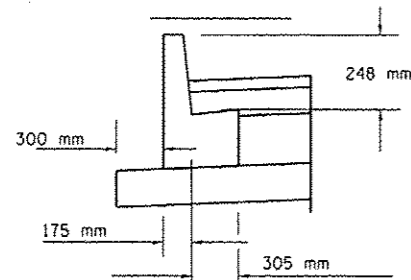
REVISIONS	
NAME	DATE

ILLINOIS DEPARTMENT OF TRANSPORTATION
 SUMMARY OF QUANTITIES
 F.A.P. ROUTE 668 (DIRKSEN PARKWAY)
 SECTION 28R-1
 SANGAMON COUNTY
 SCALE: NONE
 DATE: 06/2013
 DRAWN BY: GE
 CHECKED BY: FML

10
 +0042 *SPECIALTY ITEM

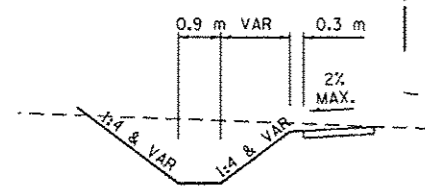


DETAIL B

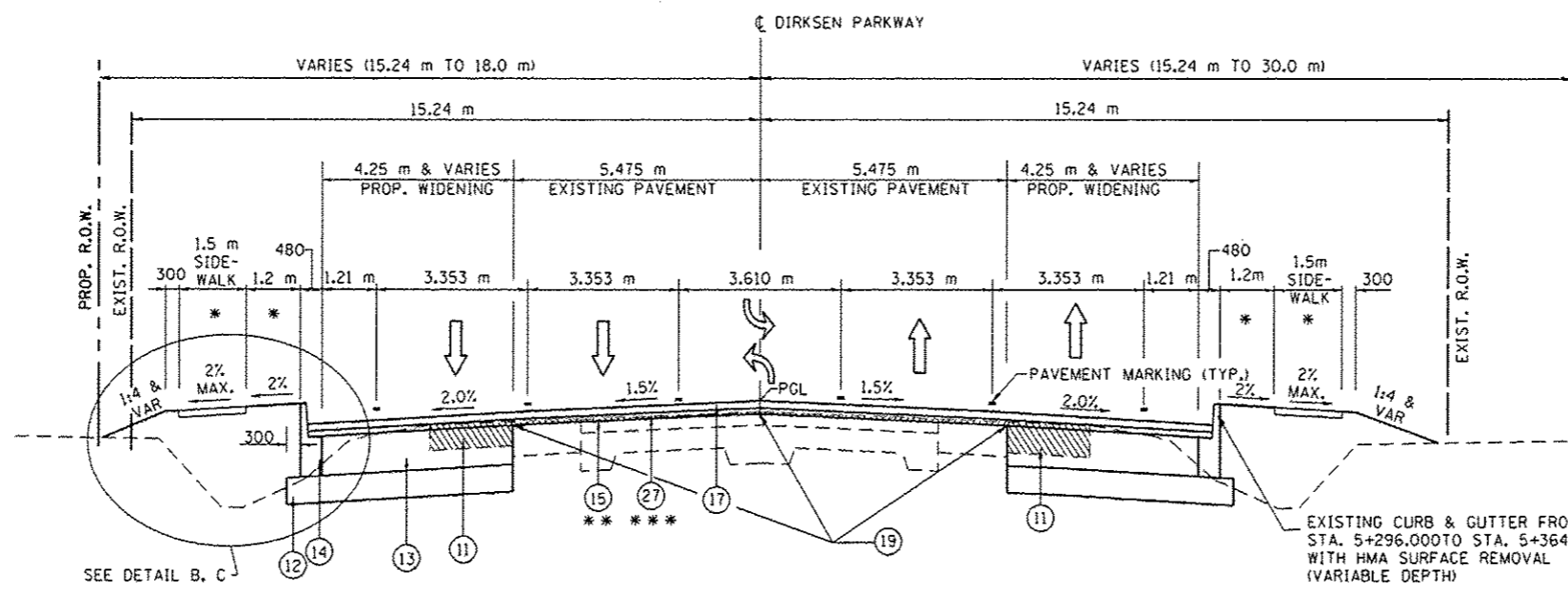


DETAIL C

PROPOSED COMBINATION CONCRETE CURB & GUTTER, TYPE B-22.30 (SPECIAL)



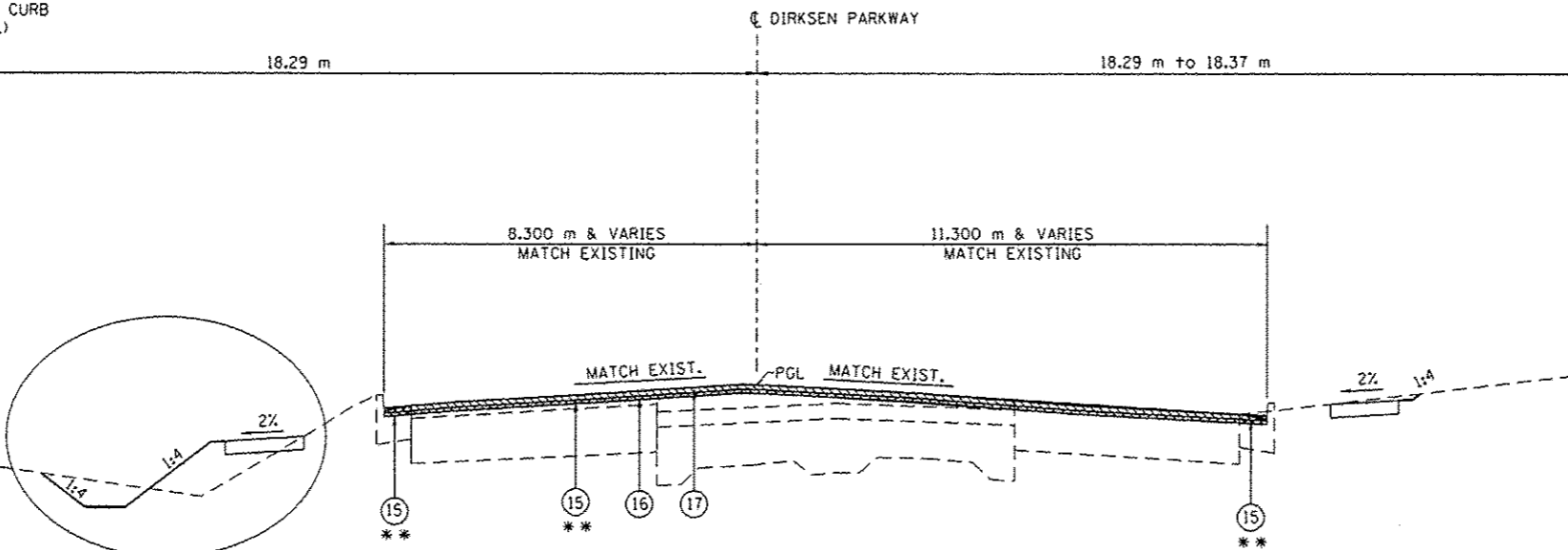
DETAIL D



TYPICAL PROPOSED SECTION (WIDENING)
DIRKSEN PARKWAY

STA. 5+296.000 TO 6+568.467

STATION EQUATION:
STATION 6+030.021 BK = STATION 6+027.285 AH



TYPICAL PROPOSED SECTION (RESURFACING & IMPROVEMENTS)
DIRKSEN PARKWAY

STA. 6+568.467 TO 6+840.000

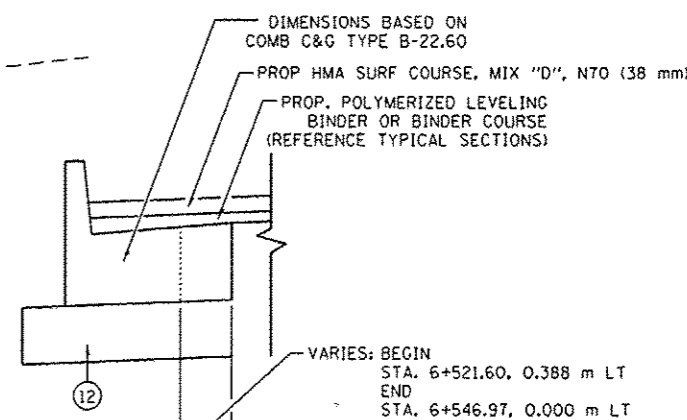
- LEGEND**
- EXIST P.C.C. PAVEMENT
 - EXIST BIT CONCRETE SURFACE COURSE, 75 mm
 - EXIST BIT CONCRETE SURFACE COURSE, 38 mm
 - EXIST LEVELING BINDER, 25 mm
 - EXIST BIT BASE COURSE WIDENING 225 mm
 - EXIST BIT BASE COURSE WIDENING 220 mm
 - EXIST BIT SHOULDER 150 mm
 - EXIST BIT SHOULDER 220 mm
 - EXIST SUBBASE GRANULAR MATERIAL, 100 mm
 - EXIST COMBINATION CURB & GUTTER TY B-15.60
 - PROP PAVED SHOULDER REMOVAL
 - PROP SUB-BASE GRANULAR MAT TY A 200 mm
 - PROP BASE COURSE WIDENING, 280 mm
 - PROP COMBINATION CURB & GUTTER TY B-22.30 (SPECIAL)
 - HMA SURFACE REMOVAL, VAR. DEPTH (AVG DEPTH 19 mm)
 - PROP POLYMERIZED LEVELING BINDER (MACHINE METHOD), N70 (VARIABLE DEPTH, MIN DEPTH 19 mm)
 - PROP POLYMERIZED HMA SURFACE COURSE, MIX "D", N70 (38 mm)
 - PROP COMBINATION CURB & GUTTER TY B-15.30
 - STRIP REFLECTIVE CRACK CONTROL TREATMENT
 - PROP COMBINATION CURB & GUTTER TY B-22.60
 - PROP COMBINATION CURB & GUTTER TY B-15.60
 - AGGREGATE BASE COURSE, TYPE A, 200 mm
 - AGGREGATE SHOULDERS, TYPE B 100 mm
 - PROP LEVELING BINDER (MACHINE METHOD), N50 (25 mm)
 - PROP HMA SURFACE COURSE, MIX "C", N50 (38 mm)
 - PROP HMA BINDER COURSE, IL 19.0, N50 (57 mm)
 - POLYMERIZED HMA BINDER COURSE, IL 19.0 FG, N70 (MIN DEPTH 57 mm)

* SEE CROSS SECTIONS FOR VARIATION IN SLOPES

** 57 mm TO BE REMOVED FROM STA. 5+225.236 TO STA. 5+375.000 AND FROM 6+568.467 TO 6+840.00. FROM STA. 5+375.00 TO STA. 5+400.00 THE REMOVAL DEPTH WILL TRANSITION FROM 57 mm TO 19 mm. FROM STA. 6+550.000 TO 6+568.467 THE REMOVAL DEPTH WILL TRANSITION FROM 19 mm TO 57 mm.

*** FROM STA. 5+296.000 TO STA. 5+412.500 AND STA. 6+550.000 TO 6+568.467 PROP POLYMERIZED LEVELING BINDER (MACHINE METHOD), N70 (MIN DEPTH 19 mm) SHALL BE UTILIZED. FROM STA. 5+375.00 TO STA. 5+412.500 AND STA. 6+550.000 TO STA. 6+568.467 THE DEPTH OF LEVELING BINDER WILL VARY TO BUILD THE TRANSITION TO AND FROM THE PROPOSED PROFILE RAISE. FROM STA. 5+412.500 TO STA. 6+550.000 POLYMERIZED HMA BINDER COURSE, IL 19.0 FG, N70 (MIN DEPTH 57 mm) SHALL BE UTILIZED AS SHOWN.

LIMITS FOR WIDENING
5+290.963 LT TO 6+561.757 LT
5+371.955 RT TO 6+561.757 RT



COMB. CONC. C&G, TYPE B (SPECIAL)

NOTE:
THE PROPOSED ROADWAY CROWN SHALL TAPER AWAY FROM THE PROPOSED CENTERLINE AND PROFILE GRADE LINE AT THE FOLLOWING LIMITS:
- FROM STA. 6+438.700, 0.0 m TO STA. 6+532.906, 1.485 m RT
- FROM STA. 6+532.906, 1.485 m RT TO STA. 6+562.500, 1.485 m RT
- FROM STA. 6+562.500, 1.485 m RT TO STA. 6+568.467, OFFSET TO MATCH EXISTING ROADWAY CROWN

THE FOLLOWING ROADWAY CROWN ELEVATIONS WITHIN THE TAPER LIMITS ARE PROVIDED:

STATION	ELEVATION	STATION	ELEVATION
6+438.700	180.984	6+512.500	180.519
6+450.000	180.923	6+525.500	180.430
6+462.500	180.853	6+537.500	180.312
6+475.000	180.781	6+550.000	180.192
6+487.500	180.695	6+562.500	180.072
6+500.000	180.607		

NOTE: IF TWO LIFTS OF LEVELING BINDER ARE REQUIRED, THE TOP LIFT SHALL HAVE A MINIMUM THICKNESS OF 38 mm. (57 mm MAX)

AT THE PARKING LOT RESURFACING LOCATIONS (DETAIL B), AGGREGATE BASE COURSE, 150 mm SHALL BE PROVIDED AT SECTIONS WHERE THE EXISTING PAVEMENT SURFACE IS COMPLETELY REMOVED (DEEP CUT SECTIONS) AS NECESSARY. SEE THE CROSS SECTION SHEETS FOR MORE DETAIL.

REVISIONS	
NAME	DATE

ILLINOIS DEPARTMENT OF TRANSPORTATION
TYPICAL SECTIONS
F.A.P. ROUTE 668 (DIRKSEN PARKWAY)
SECTION 28R-1
SANGAMON COUNTY

SCALE: NONE
DATE: 06/2013

DRAWN BY: RK
CHECKED BY: SEW