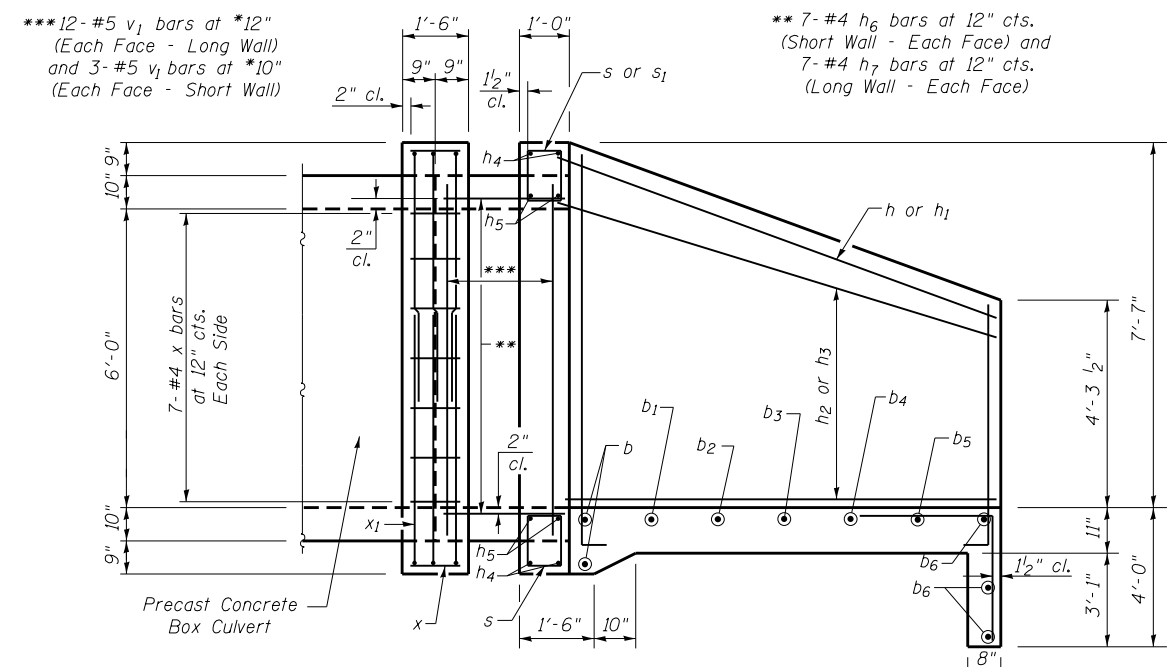


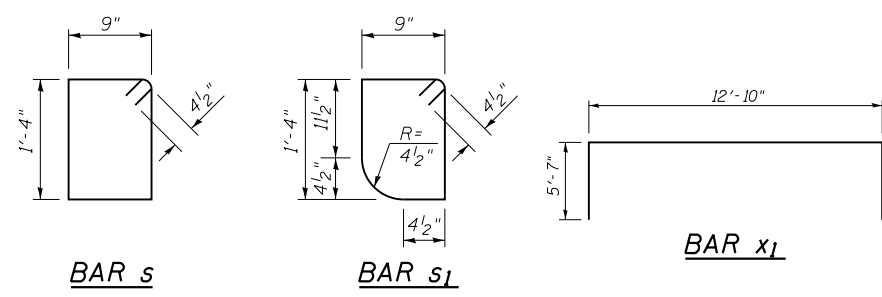
END ELEVATION



SECTION A-A

NOTES:

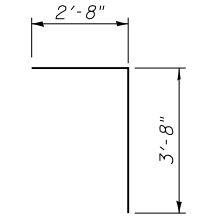
- Bill of Material for 2 end sections.
- Bar dimensions are out to out.
- Not to scale or proper orientation.
- Exposed edges shall be beveled $\frac{3}{4}$ ".
- Reinforcement bars shall conform to the requirements of ASTM A706 Gr 60. See Special Provisions.
- Headwall at 45° skew to culvert \perp .
- Minimum bar laps: #5 bar = 2'-2"



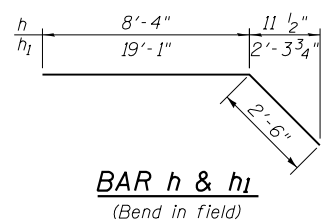
BAR s

BAR s₁

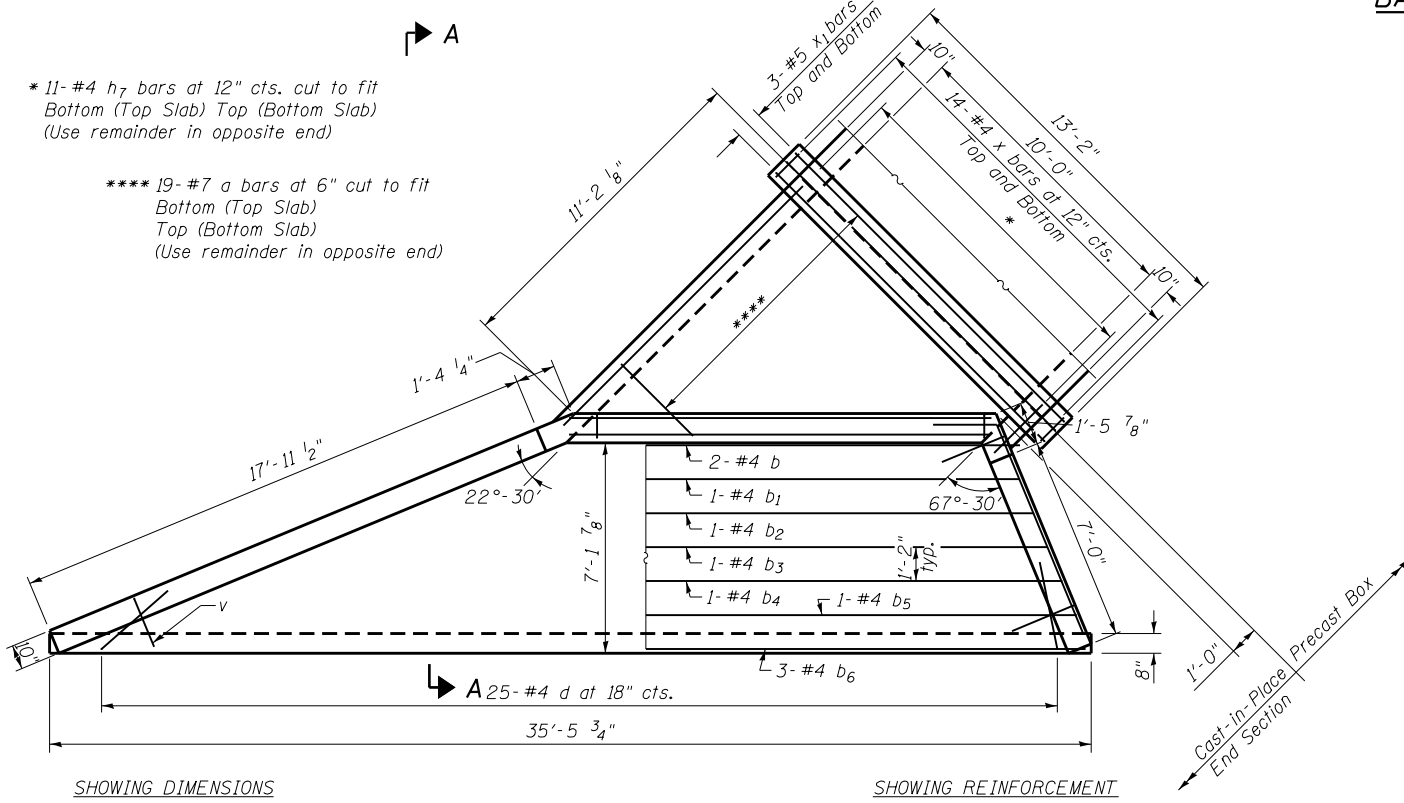
BAR x₁



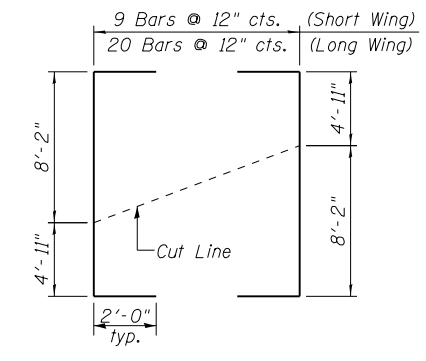
BAR d



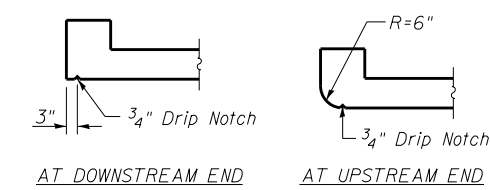
BAR h & h₁
(Bend in field)



PLAN



FIELD CUTTING DIAGRAM
BAR v



SECTION THRU HEADWALL

BILL OF MATERIAL

Bar	No.	Size	Length	Shape
a	38	#7	11'-4"	
b	4	#4	17'-0"	
b1	2	#4	20'-3"	
b2	2	#4	23'-5"	
b3	2	#4	26'-8"	
b4	2	#4	29'-10"	
b5	2	#4	33'-0"	
b6	6	#4	35'-2"	
d	50	#4	6'-4"	
h	2	#4	10'-10"	
h1	2	#4	21'-7"	
h2	8	#4	8'-2"	
h3	8	#4	19'-0"	
h4	8	#6	14'-3"	
h5	8	#7	14'-3"	
h6	28	#4	1'-10"	
h7	50	#4	11'-9"	
s	45	#4	4'-11"	
s1	15	#4	4'-9"	
v	29	#5	17'-1"	
v1	60	#5	7'-4"	
x	84	#4	1'-2"	
x1	12	#5	24'-0"	
Reinforcement Bars			Pound	4,010

DESIGNED - RJP	EXAMINED	DATE -
CHECKED - ADL	ENGINEER OF BRIDGE DESIGN	
DRAWN - SEB	PASSED	REVISED - SEB 10-28-13
CHECKED - ADL	ENGINEER OF BRIDGES AND STRUCTURES	REVISED

STATE OF ILLINOIS
DEPARTMENT OF TRANSPORTATION

CULVERT DETAILS
STRUCTURE NUMBER 001-7129

SHEET NO. 3 OF 5 SHEETS

F.A.P. RTE.	SECTION	COUNTY	TOTAL SHEETS	SHEET NO.
63	(1)CR-1, (2)CR	ADAMS	43	19
CONTRACT NO. 72C12				
ILLINOIS FED. AID PROJECT				
Klingner & Associates P.C.				