

LOCATION OF SECTION INDICATED THUS: - [shaded box] -

STATE OF ILLINOIS
DEPARTMENT OF TRANSPORTATION
DIVISION OF HIGHWAYS

SUBMITTED _____ 20 _____

DEPUTY DIRECTOR OF HIGHWAYS, REGION ENGINEER

_____ 20 _____

ENGINEER OF DESIGN AND ENVIRONMENT

_____ 20 _____

DIRECTOR OF HIGHWAYS, CHIEF ENGINEER

**PRINTED BY THE AUTHORITY
OF THE STATE OF ILLINOIS**

DATE: _____
LICENSE EXP. 11/30/2013

STATE OF ILLINOIS
DEPARTMENT OF TRANSPORTATION
DIVISION OF HIGHWAYS

**PROPOSED
HIGHWAY PLANS**

FAI 72 (I-72)
SECTION 84-10-1RS-3, 84-10-2RS-4)BR,I
PROJECT
HMA RESURFACING, BRIDGE REHABILITATION
SANGAMON COUNTY

INDEX OF SHEETS

- 1 COVER SHEET
- 2 GENERAL NOTES AND COMMITMENTS
- 3-11 SUMMARY OF QUANTITIES
- 12-16 TYPICAL SECTIONS
- 17-25 SCHEDULES
- 26 ALIGNMENT, TIES, AND BENCHMARKS
- 27-33 PLAN AND PROFILE SHEETS
- 34-39 MEDIAN & ISLAND DETAILS
- 40-52 MAINTENANCE OF TRAFFIC PLANS
- 53-54 DOWELLED MEDIAN DETAIL
- 55-81 BRIDGE PLANS 084-0150 (CH-12)
- 82-89 BRIDGE PLANS 084-0151 (TR-171)
- 90-114 BRIDGE PLANS 084-0154 (TR-420)
- 115-116 SUPERELEVATION DETAILS
- 117 BUTT JOINT AND HMA RAMP DETAILS
- 118 BRIDGE APPROACH PAVEMENT CONNECTOR DETAIL
- 119 MISCELLANEOUS DETAILS
- 120-136 CROSS SECTIONS

HIGHWAY STANDARDS

000001-06	701401-07
001001-02	701406-07
001006	701411-08
442001-04	701421-05
442101-07	701422-05
442201-03	701446-04
635001-01	701451-01
642001-02	701456-02
701101-03	701502-05
701106-02	701901-02
701201-04	780001-03
701306-03	781001-03
701321-13	
701400-06	



SN 084-0154
STA. 299 + 80.31 TR 420 =
STA. 269 + 23.08 FAI 72

BEGIN IMPROVEMENT
STA. 276 + 08.75

C-96-085-09

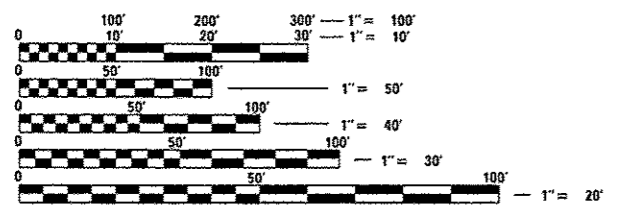
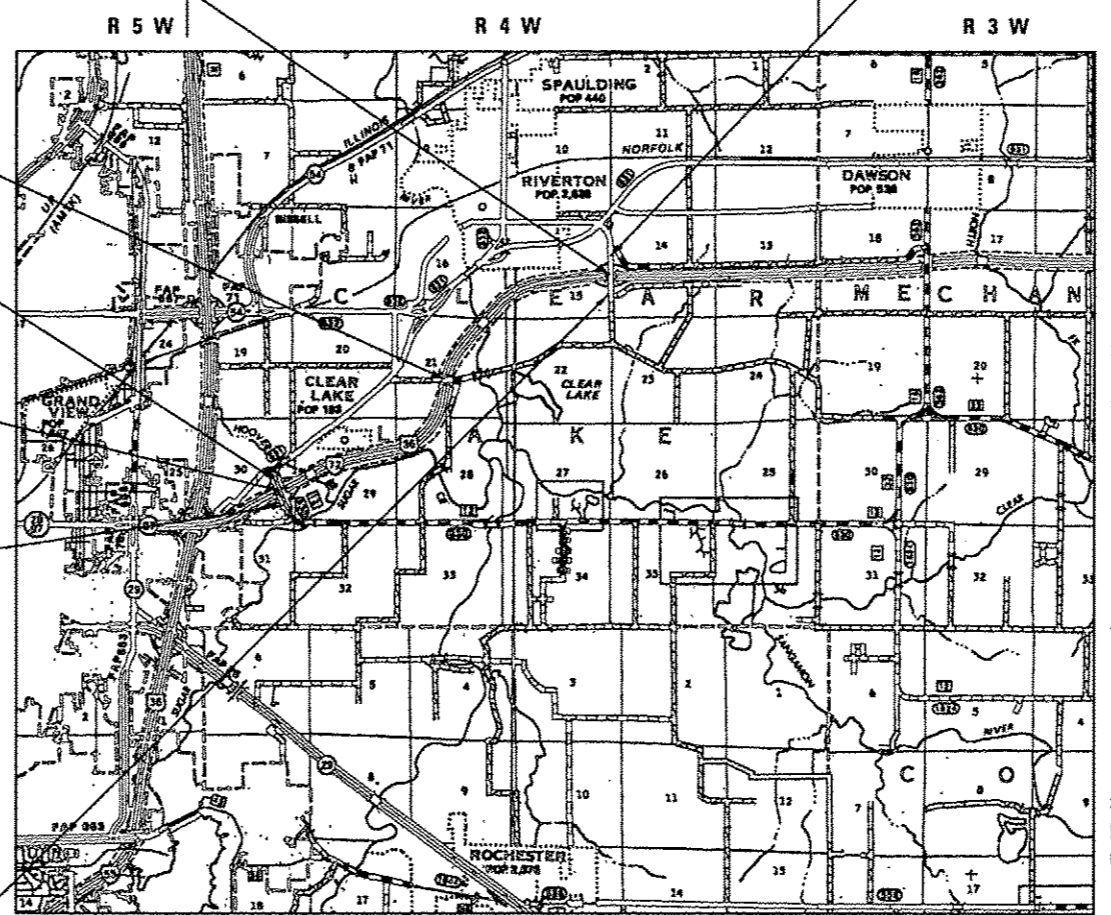
SN 084-0151
STA. 200 + 00.00 TR 171 =
STA. 161 + 04.98 FAI 72

BEGIN IMPROVEMENT
STA. 85.48.50 CH 12

SN 084-0150
STA. 100 + 01.88 MECHANICSBURG RD. =
STA. 48 + 76.46 FAI 72

END IMPROVEMENT
STA. 112 + 26.46 CH 12

END IMPROVEMENT
STA. 313 + 50.00 TR 420



FULL SIZE PLANS HAVE BEEN PREPARED USING STANDARD ENGINEERING SCALES. REDUCED SIZED PLANS WILL NOT CONFORM TO STANDARD SCALES. IN MAKING MEASUREMENTS ON REDUCED PLANS, THE ABOVE SCALES MAY BE USED.

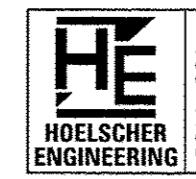
J.U.L.I.E.
JOINT UTILITY LOCATION INFORMATION FOR EXCAVATION
1-800-892-0123
OR 811

SENIOR TEAM ENGINEER : VINCE MADONIA (217) 785-9046
TEAM ENGINEER : VICTOR YOUNG (217) 524-0472
CONTRACT NO. 72C90

4 12-30-13

FAI 72	CH 12 (MECHANICSBURG RD.)	TR 171 (OAK CREST RD.)	TR 420 (OVERPASS RD.)
FUNCTION CLASS=INTERSTATE	FUNCTION CLASS= OTHER PRINCIPAL Arterial	FUNCTION CLASS=LOCAL ROAD	FUNCTION CLASS=LOCAL ROAD
A.D.T. (2012) 13,500	A.D.T. (2012) 4450	A.D.T. (2012) 2000	A.D.T. (2012) 2150
SU (2012) 610	SU 310	SU 180	SU 150
MU (2012) 1,430	MU 220	MU 60	MU 110
PV (2012) 11,460	PV 3920	PV 1760	PV 1890

NET LENGTH OF CH 12 (MACHANICSBURG RD.) = 1,6300.00 FT = 0.309 MILES
NET LENGTH OF TR 420 (OVERPASS RD.) = 1,589.02 FT = 0.0301 MILES
TOTAL LENGTH OF PROJECT = 17,889.02 FT = 3.388 MILES



11 Executive Drive Suite 12
Fairview Heights, Illinois 62208
(618) 624-8632
(618) 624-8611 (fax)

2501 Chatham Road, Suite 120
Springfield, Illinois 62704
(217) 698-8610
(217) 698-8608 (fax)