

F.A.J. RTE.	SECTION	COUNTY	TOTAL SHEETS	SHEET NO.
I-72	.	SANGAMON	194	1
		ILLINOIS	CONTRACT NO. 72C90	

• (84-10-1RS-3, 84-10-2RS-4)BR, I

PART "A"

- 1 PART "A"
BEGIN IMPROVEMENT
SECTION (84-10-1RS-3, 84-10-2RS-4)BR, I
I-72 STATION 13+32.00 (EB) &
STA. 15+40.00 (WB)
- 2 SN 084-0150
STA. 48+76.46 (FAI 72) =
STA. 100+01.88 (MECHANICSBURG RD)
- 3 SN 084-2011
EXIST. BOX CULVERT
STA. 68+55.02
- 4 SN 084-0151
STA. 161+04.98 (FAI 172) =
STA. 200+00.00 (TR 171)
- 5 BRIDGE OMISSION:
SN 084-0152 OVER SANGAMON RIVER
STA. 193+08.04 TO STA. 201+56.86 (FAI 72, WB)
SN 084-0153 OVER SANGAMON RIVER
STA. 193+22.30 TO STA. 201+41.12 (FAI 72, EB)
- 6 SN 084-0154
STA. 269+23.08 (FAI 72) =
STA. 299+80.31 (TR 420)
- 7 PART "A"
END IMPROVEMENT
SECTION (84-10-1RS-3, 84-10-2RS-4)BR, I
STATION EQUATION:
STA. 295+70.43 (BK) = STA. 0+00.00 (AH)
- 8 PART "A"
SHOULDER RUMBLE STRIPS IMPROVEMENT
I-72/CLEARLAKE AVE.
STA. 34+00.00 TO STA. 70+81.00 (EB)
STA. 34+00.00 TO STA. 70+81.00 (WB)

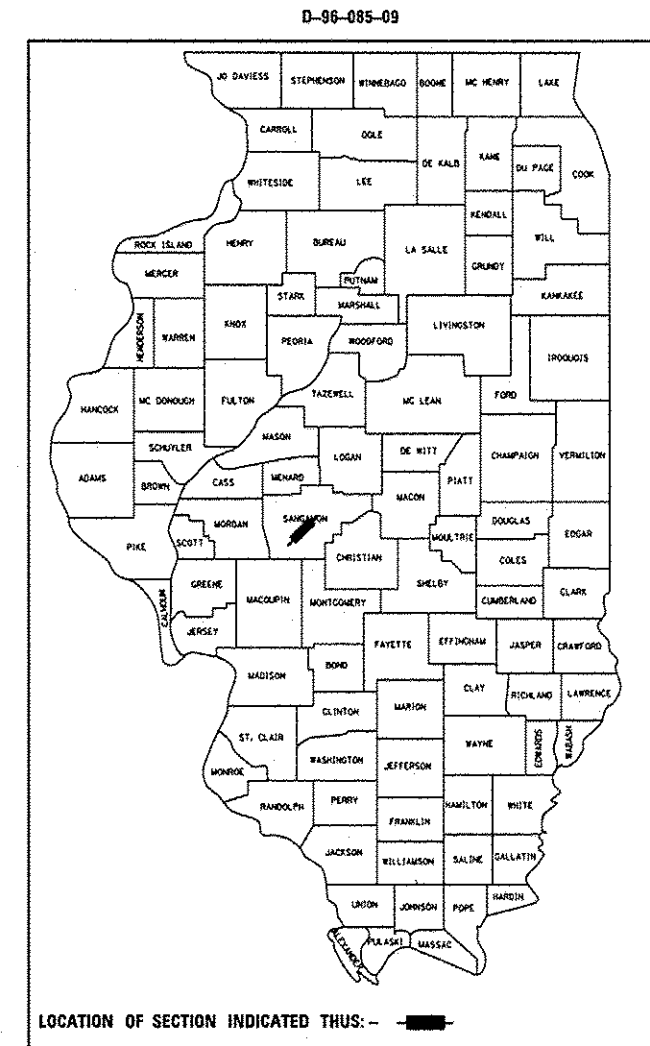
PART "B"

- 8 PART "B"
BEGIN IMPROVEMENT
SECTION (84-10-1RS-3, 84-10-2RS-4)BR, I
STA. 276+08.75 (TR 420)
- 9 PART "B"
END IMPROVEMENT
SECTION (84-10-1RS-3, 84-10-2RS-4)BR, I
STA. 313+50.00 (TR 420)
- 10 PART "B"
BEGIN IMPROVEMENT
STA. 85+48.50 (CH 12)
- 11 PART "B"
END IMPROVEMENT
STA. 112+26.46 (CH 12)

STATE OF ILLINOIS
DEPARTMENT OF TRANSPORTATION
DIVISION OF HIGHWAYS
PROPOSED
HIGHWAY PLANS

FAI 72 (I-72)
SECTION (84-10-1RS-3, 84-10-2RS-4)BR, I
PROJECT ACNHPP-0072(401)
HMA RESURFACING, BRIDGE REHABILITATION
SANGAMON COUNTY

C-96-085-09



FAI 72

FUNCTION CLASS = INTERSTATE
ADT (2012) 13,500
SU (2012) 610
MU (2012) 1,430
PV (2012) 11,460

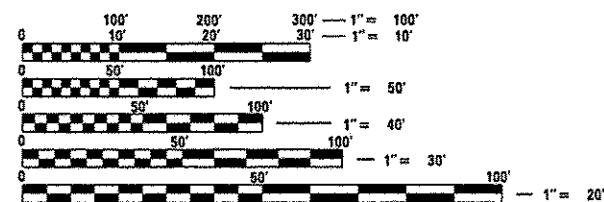
STATE OF ILLINOIS
DEPARTMENT OF TRANSPORTATION
DIVISION OF HIGHWAYS

SUBMITTED September 6, 2013
Rgr 2 Dated
DEPUTY DIRECTOR OF HIGHWAYS, REGION ENGINEER

October 4, 2013
John D. Baranzelli, P.E.
ENGINEER OF DESIGN AND ENVIRONMENT

October 4, 2013
Emor Osman, P.E.
DIRECTOR OF HIGHWAYS, CHIEF ENGINEER

FOR INDEX OF SHEETS, SEE SHEET NO. 2 OF 194

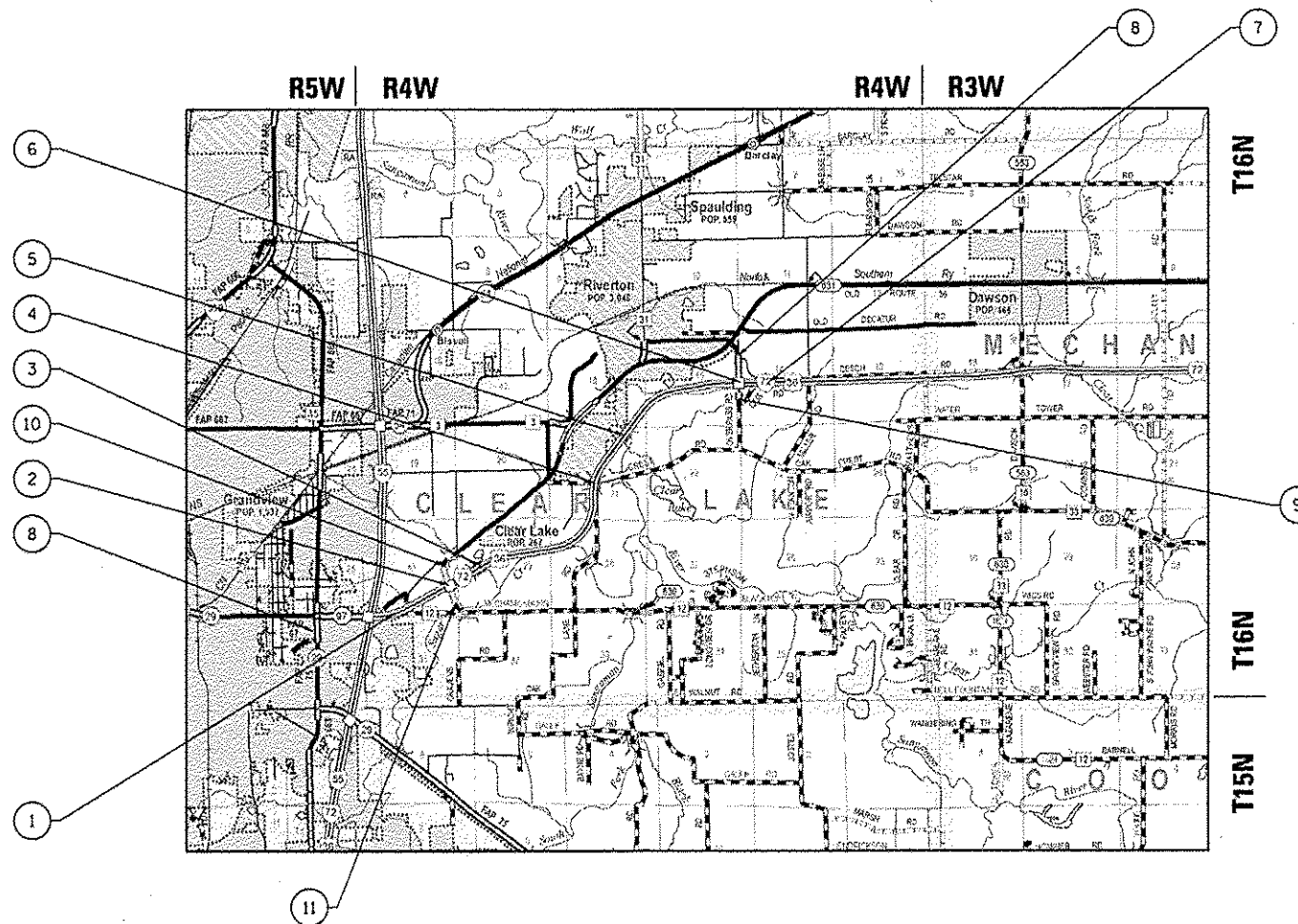


FULL SIZE PLANS HAVE BEEN PREPARED USING STANDARD ENGINEERING SCALES. REDUCED SIZED PLANS WILL NOT CONFORM TO STANDARD SCALES. IN MAKING MEASUREMENTS ON REDUCED PLANS, THE ABOVE SCALES MAY BE USED.

J.U.L.I.E.
JOINT UTILITY LOCATION INFORMATION FOR EXCAVATION
1-800-892-0123
OR 811

PROJECT ENGINEER: VINCE MADONIA (217) 785-9046
PROJECT MANAGER: VICTOR YOUNG (217) 557-7897

CONTRACT NO. 72C90



PART "A"

GROSS LENGTH = 27,389.61 FT = 5.187 MILES
NET LENGTH = 27,389.61 FT = 5.187 MILES

PART "B"

GROSS LENGTH = 17,889.02 FT = 3.388 MILES
NET LENGTH CH 12 (MECHANICSBURG RD.) = 16,300.00 FT = 0.309 MILES
NET LENGTH TR 420 (OVERPASS RD.) = 1,589.02 FT = 0.0301 MILES

PRINTED BY THE AUTHORITY
OF THE STATE OF ILLINOIS