

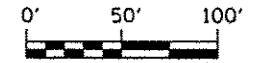
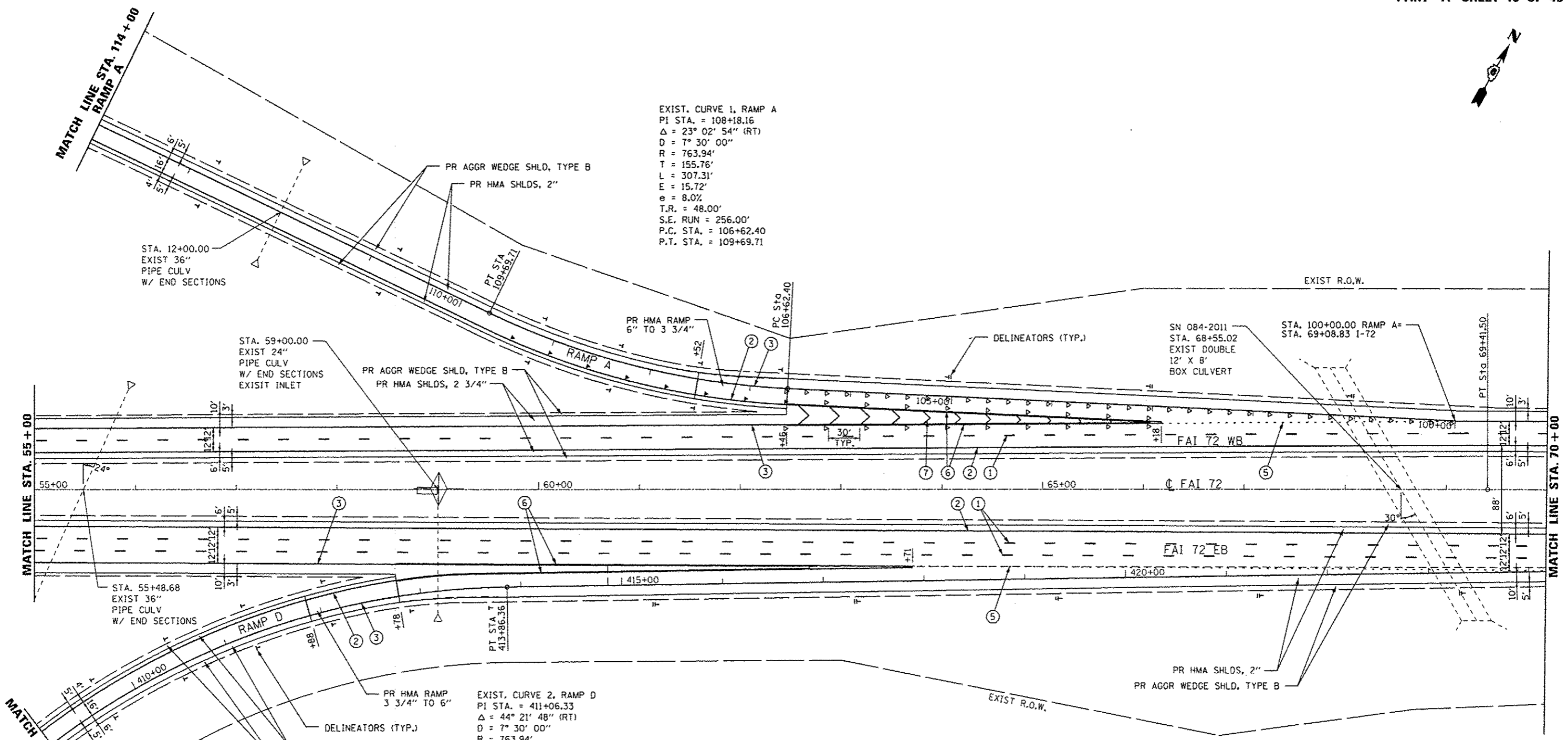
EXIST. CURVE 1, RAMP A  
 PI STA. = 108+18.16  
 $\Delta = 23^\circ 02' 54''$  (RT)  
 $D = 7^\circ 30' 00''$   
 $R = 763.94'$   
 $T = 155.76'$   
 $L = 307.31'$   
 $E = 15.72'$   
 $e = 8.0\%$   
 $T.R. = 48.00'$   
 $S.E. RUN = 256.00'$   
 $P.C. STA. = 106+62.40$   
 $P.T. STA. = 109+69.71$

EXIST. CURVE 2, RAMP D  
 PI STA. = 411+06.33  
 $\Delta = 44^\circ 21' 48''$  (RT)  
 $D = 7^\circ 30' 00''$   
 $R = 763.94'$   
 $T = 311.47'$   
 $L = 591.51'$   
 $E = 61.06'$   
 $e = 8.0\%$   
 $T.R. = 48.00'$   
 $S.E. RUN = 256.00'$   
 $P.C. STA. = 407+94.85$   
 $P.T. STA. = 413+86.36$

MEDIAN VARIES FROM 40' AT STA. 22+30.47 TO 88' AT STA. 69+41.50

PAVEMENT MARKING LEGEND

- ① PR PREFORMED PLASTIC PAVEMENT MARKING, TYPE B (INLAID), LINE 5" (30' SKIP, 10' DASH)
- ② PR URETHANE PAVEMENT MARKING, LINE 5" (SOLID YELLOW)
- ③ PR URETHANE PAVEMENT MARKING, LINE 5" (SOLID WHITE)
- ④ PR URETHANE PAVEMENT MARKING, LINE 6" (SOLID WHITE)
- ⑤ PR URETHANE PAVEMENT MARKING, LINE 6" (6' SKIP, 2' DASH)
- ⑥ PR PREFORMED PLASTIC PAVEMENT MARKING, TYPE B (INLAID), LINE 8" (SOLID WHITE)
- ⑦ PR PREFORMED PLASTIC PAVEMENT MARKING, TYPE B (INLAID), LINE 12" (SOLID WHITE)
- ⑧ PR PREFORMED PLASTIC PAVEMENT MARKING, TYPE B (INLAID), LINE 24" (SOLID WHITE)
- ⑨ PR PREFORMED PLASTIC PAVEMENT MARKING, TYPE B (INLAID), LETTERS & SYMBOLS (SOLID WHITE)
- ▽ PR RAISED REFLECTIVE PAVEMENT MARKER, ONE-WAY, WHITE
- ◀ PR RAISED REFLECTIVE PAVEMENT MARKER, ONE-WAY, AMBER



USER NAME : sparksgv	DESIGNED - BTM	REVISED -	<b>STATE OF ILLINOIS DEPARTMENT OF TRANSPORTATION</b>	<b>PLAN SHEETS</b>			F.A.I. RTE. I-72	SECTION *	COUNTY SANGAMON	TOTAL SHEETS 194	SHEET NO. 32
PLOT SCALE : 100.0000' / in.	CHECKED - JSA	REVISED -		SCALE:	SHEET NO.	OF SHEETS	STA.	TO STA.	* (84-10-1)RS-3, (84-10-2)RS-4 CONTRACT NO. 72C90		
PLOT DATE : Sep-06-2013 07:52:04AM	DATE - 12/19/12	REVISED -		[ILLINOIS] FED. AID PROJECT							

FILE NAME : c:\pwork\work\dot\sparksgv\0330228\0672C90.sht.plt-04.dgn