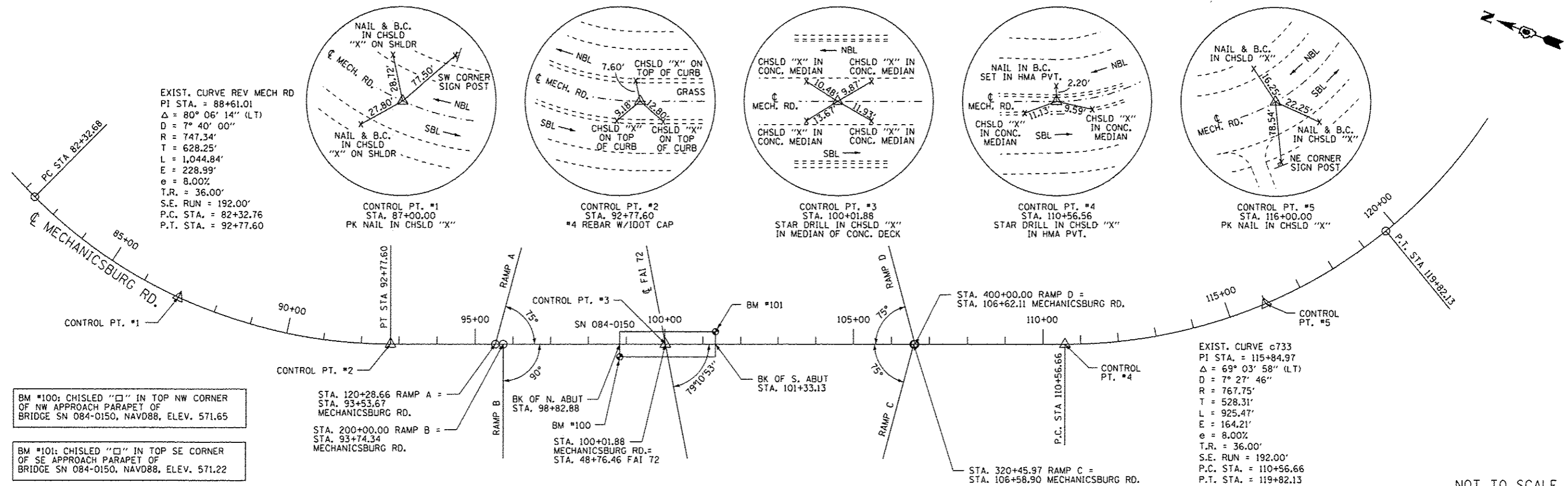
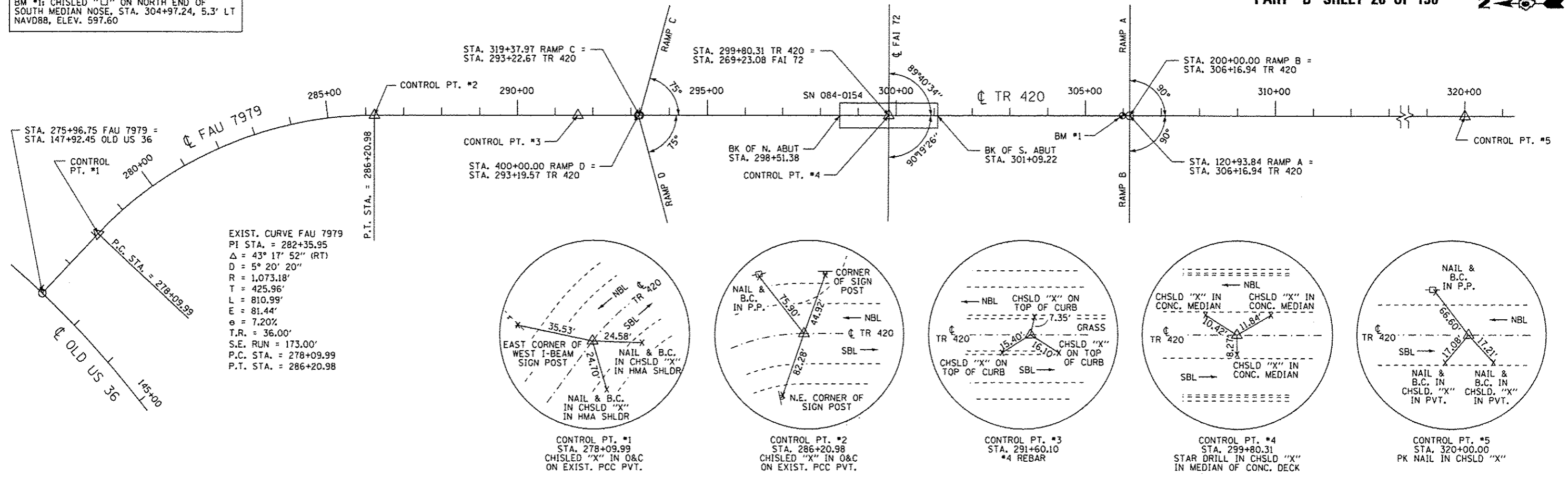


BM #1: CHISLED "□" ON NORTH END OF SOUTH MEDIAN NOSE, STA. 304+97.24, 5.3' LT NAVD88, ELEV. 597.60



BM #100: CHISLED "□" IN TOP NW CORNER OF NW APPROACH PARAPET OF BRIDGE SN 084-0150, NAVD88, ELEV. 571.65

BM #101: CHISLED "□" IN TOP SE CORNER OF SE APPROACH PARAPET OF BRIDGE SN 084-0150, NAVD88, ELEV. 571.22

NOT TO SCALE

| | | | | | | | | | | | | | |
|-------------------------------------|-----------------|-----------|---------------------------------------------------|---------------------------------|-----------|-----------|------|-------------|-------------------------------|--------|--------------|--------------------|----|
| USER NAME = sparkgv | DESIGNED - BTM | REVISED - | STATE OF ILLINOIS DEPARTMENT OF TRANSPORTATION | ALIGNMENT, TIES, AND BENCHMARKS | | | | F.A.I. RTE. | SECTION | COUNTY | TOTAL SHEETS | SHEET NO. | |
| PLLOT SCALE = 40,000' / 1" = | DRAWN - BTM | REVISED - | | SCALE: | SHEET NO. | OF SHEETS | STA. | TO STA. | 1722 | * | SANGAMON | 194 | 84 |
| PLLOT DATE = Sep-06-2013 09:11:49AM | CHECKED - JSA | REVISED - | | | | | | | #184-10-1RS-3,64-10-2RS-4BR,1 | | | CONTRACT NO. 72C90 | |
| | DATE - 12/19/12 | REVISED - | | | | | | | ILLINOIS FED. AID PROJECT | | | | |